

# PRODUCT INFORMATION PACKET



Model No: 985.654C  
Catalog No: M1125214.00  
...60:1.30RPM.100LBIN.1/17HP.30....12V..TENV.985.654C  
PZ Series



Regal and Leeson are trademarks of Regal Beloit Corporation or one of its affiliated companies.  
©2018 Regal Beloit Corporation, All Rights Reserved. MC017097E





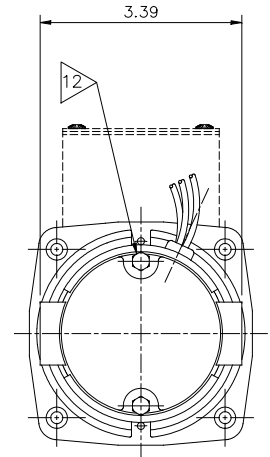
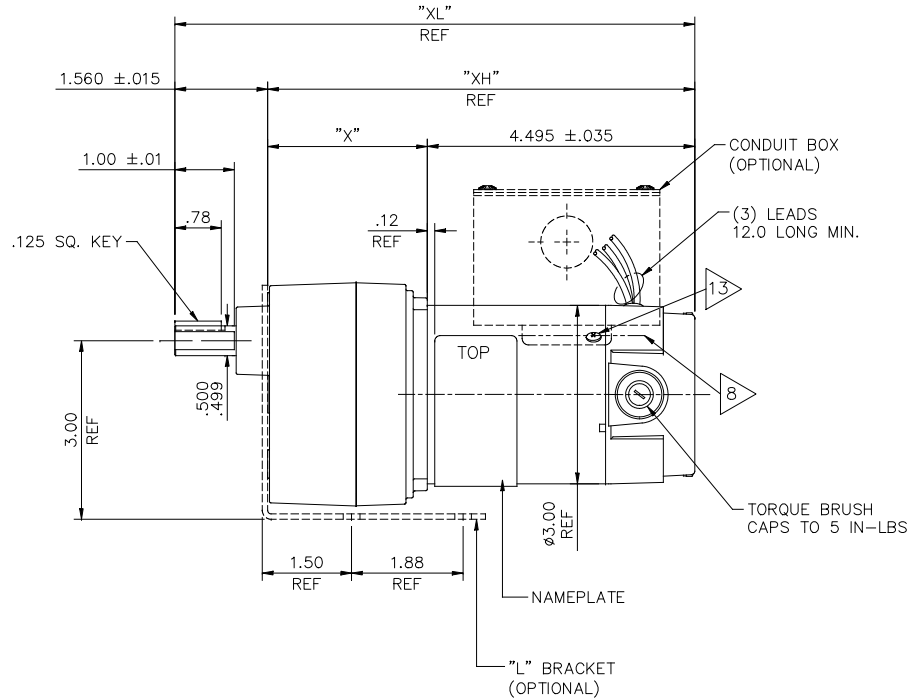
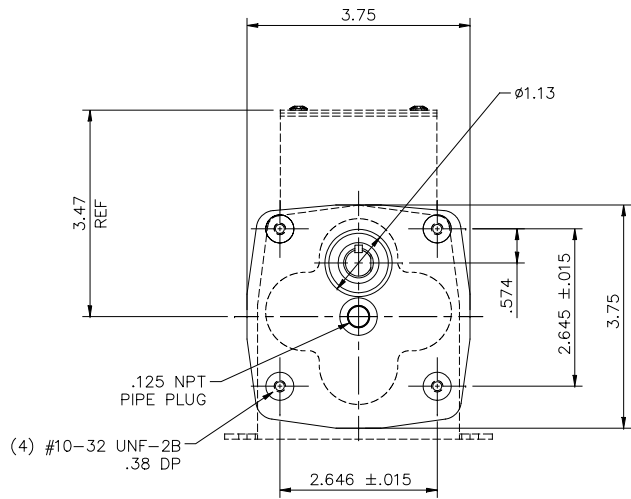
### Nameplate Specifications

Output HP	<b>0.06 Hp</b>	Output KW	<b>0.04 kW</b>
Voltage	<b>12 V</b>	Current	<b>5.2 A</b>
Speed	<b>30 rpm</b>	Service Factor	<b>1</b>
Efficiency	<b>59.4 %</b>	Duty	<b>Continuous</b>
Insulation Class	<b>F</b>	Frame	<b>30</b>
Enclosure	<b>Totally Enclosed Non Ventilated</b>	Overload Protector	<b>No</b>
Ambient Temperature	<b>40 °C</b>	Drive End Bearing Size	<b>6000</b>
Opp Drive End Bearing Size	<b>6000</b>	UL	<b>Recognized</b>
CSA	<b>Y</b>	CE	<b>N</b>

### Technical Specifications

Rotation	<b>Reversible</b>	Mounting	<b>Special</b>
Shaft Type	<b>Parallel</b>	Overall Length	<b>8.74 in</b>
Frame Length	<b>2.99 in</b>	Shaft Diameter	<b>0.500 in</b>
Shaft Extension	<b>1 in</b>		
Outline Drawing	<b>M1030951-M1125214</b>	Connection Diagram	<b>M112521400FI</b>

**This is an uncontrolled document once printed or downloaded and is subject to change without notice. Date Created: 10/15/2018**



- NOTES:
1. ROTATION: REVERSIBLE
  2. HIPOT: 1250 VAC FOR ONE SECOND, BOTH LEADS TO CASE
  3. LEADS: 14 GA
  4. BEARINGS: BALL BEARINGS BOTH ENDS
  5. CASTINGS: GEARBOX—DIE CAST ALUMINUM, REAR ENDCAP—DIE CAST ZINC
  6. MAGNET TUBE: ZINC PLATED STEEL
  7. INSULATION: CLASS F 155°C
  8. NAME PLATE MUST BE IN LINE WITH HOLE WITHIN .06"
  9. TEST AND LUBRICATE GEARBOX PER 890-178
  10. PAINT PER DRAWING # PP985-6XX
  11. PACKAGE FOR SHIPMENT PER 890-179
12. TORQUE THROBOLTS TO 20-25 IN-LB
13. INSTALL CONDUIT BOX SCREWS AT FINAL ASSEMBLY BEFORE PAINTING

MODEL No.	VOLTAGE	CATALOG No.	TYPE	RATIO	TORQUE	HP	RPM	"XL" inch	"XH" inch	"X" inch
985.653	12VDC	M1125213.00	DN	180:1	100 IN.LB.	1/20	10	9.28	7.72	3.25
985.654	12VDC	M1125214.00	DN	60:1	100 IN.LB.	1/17	30	8.74	7.18	2.68
985.655	12VDC	M1125215.00	DN	30:1	56 IN.LB.	1/17	55	8.74	7.18	2.68
985.656	12VDC	M1125216.00	DN	18:1	36 IN.LB.	1/17	90	8.74	7.18	2.68

ITEM No.	ITEM REV
-00	001

		TOLERANCES UNLESS SPECIFIED		<b>LEESON</b> ELECTRIC MOTORS GEARMOTORS AND DRIVES	DRAWN KLS 11/24/04
		DEC.	INCHES		CHK IPG 11/24/04
		.X	±.1	TITLE OUTLINE 30 FRAME DC- PZ GEARBOX	APPD
		.XX	±.03		SCALE 1=2
D	REMOVED ±1.00 FROM LEAD LENGTH, ECO-0128114	IPG	7/25/17	MAT'L	REF M1125213-160L
00	RELEASED PER ECR 86540	KLS	11/24/04		IPG .XXX ±.005
NO.	REVISION	BY & DATE	CHK ANG ±1/2"	FINISH	PREV
THIS DRAWING IN DESIGN AND DETAIL IS OUR PROPERTY AND MUST NOT BE USED EXCEPT IN CONNECTION WITH OUR WORK ALL RIGHTS OF DESIGN AND INVENTION ARE RESERVED THIS IS AN ELECTRONICALLY GENERATED DOCUMENT - DO NOT SCALE THIS PRINT				RFP	CAD FILE M1030951
				SIZE B	DRAWING NO. M1030951
				DIST	REV. D

1. HIPOT @ 1250 VOLTS FOR ONE SECOND, RED & BLACK LEADS TO CASE
2. RED LEAD POS (+)
- BLACK LEAD NEG (-)
3. RUN IN @ 12 VDC, 1.95 MAX AMPS, NO LOAD
4. TORQUE THRUBOLTS TO 20-25 LB. IN.
5. ALL MOTORS TO BE RUN-IN AT FREE-LOAD FOR 30 MINS. [REVERSING DIRECTION AT 15 MINUTES] AT 12±1 VDC.

CCWSE (MOTOR ONLY-SHAFT OUTPUT END)


CHECKS TO OUTLINE DRAWING

- A. LEAD LENGTH & STRIP
- B. SHAFT ROTATION (GEARBOX)
- C. LABEL CORRECT, POSITION (CRITICAL) & DATE CODE
- D. -
- E. PAINT - SMOOTH. COMPLETE & NO RUNS
- F. CONDUIT BOX SCREWS
- G. GEARBOX ID
- H. GEARBOX OIL PLUG TORQUE (24 LB. IN.)

PERFORMANCE SPECIFICATIONS

TORQUE	SPEED	MAX AMPS
0 LB. IN.	30-36	1.95
50 LB. IN.	28-34	3.85
100 LB. IN.	26-32	5.75

UL NUMBER: 985.654

04	NOTE 3: 1.95 WAS 1.48. ADDED PERF. SPECS. AT 0 LB-IN, 28-34 WAS 29-32, 3.85 WAS 3.62, 26-32 WAS 27-30, 5.75 WAS 5.70.	SJB 6/16/2010		TOLERANCES UNLESS SPECIFIED		 ELECTRIC MOTORS GEARMOTORS AND DRIVES	DRAWN AD 1/29/01	
			DEC.	INCHES			CHK	
			.X	±.1			APPD	
03	REMOVED KEY & RUBBER BAND/"D"OUT.CHKS. ECR83964	RPB 12/17/03	BC	.XX	±.01	TITLE	SCALE 1=1	
02	CHG'D NOTE 5	JKM 11/8/02		.XXX	±.005	FINAL INSPECTION 30 FRAME DC - PZ GEARBOX	REF	
01	1.48 W .74; 29-32 WAS 30-33; 3.62 W 3.4; 5.70 W 5.8	AD 3/27/01		.XXXX	±.0005	MAT'L.	FMF	
NO.	REVISION	BY & DATE	CHK	ANG	±1/2'	FINISH	PREV	
THIS DRAWING IN DESIGN AND DETAIL IS OUR PROPERTY AND MUST NOT BE USED EXCEPT IN CONNECTION WITH OUR WORK ALL RIGHTS OF DESIGN AND INVENTION ARE RESERVED THIS IS AN ELECTRONICALLY GENERATED DOCUMENT - DO NOT SCALE THIS PRINT			RFP	CAD FILE M112521400FI		SIZE	DRAWING NO.	REV.
			DIST			A	M1125214.00FI	04