

PRODUCT INFORMATION PACKET



Model No: CM31P17FZ7A

Catalog No: M1125133.00

PZ...6:1.283RPM.12LBIN..06HP.31...AC GEARMOTORS SUB-FHP./115V.1PH.60HZ.TEFC.CM31P17FZ7A
PZ Series



Regal and Leeson are trademarks of Regal Beloit Corporation or one of its affiliated companies.

©2018 Regal Beloit Corporation, All Rights Reserved. MC017097E





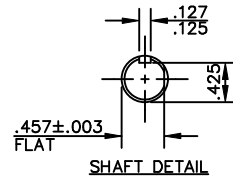
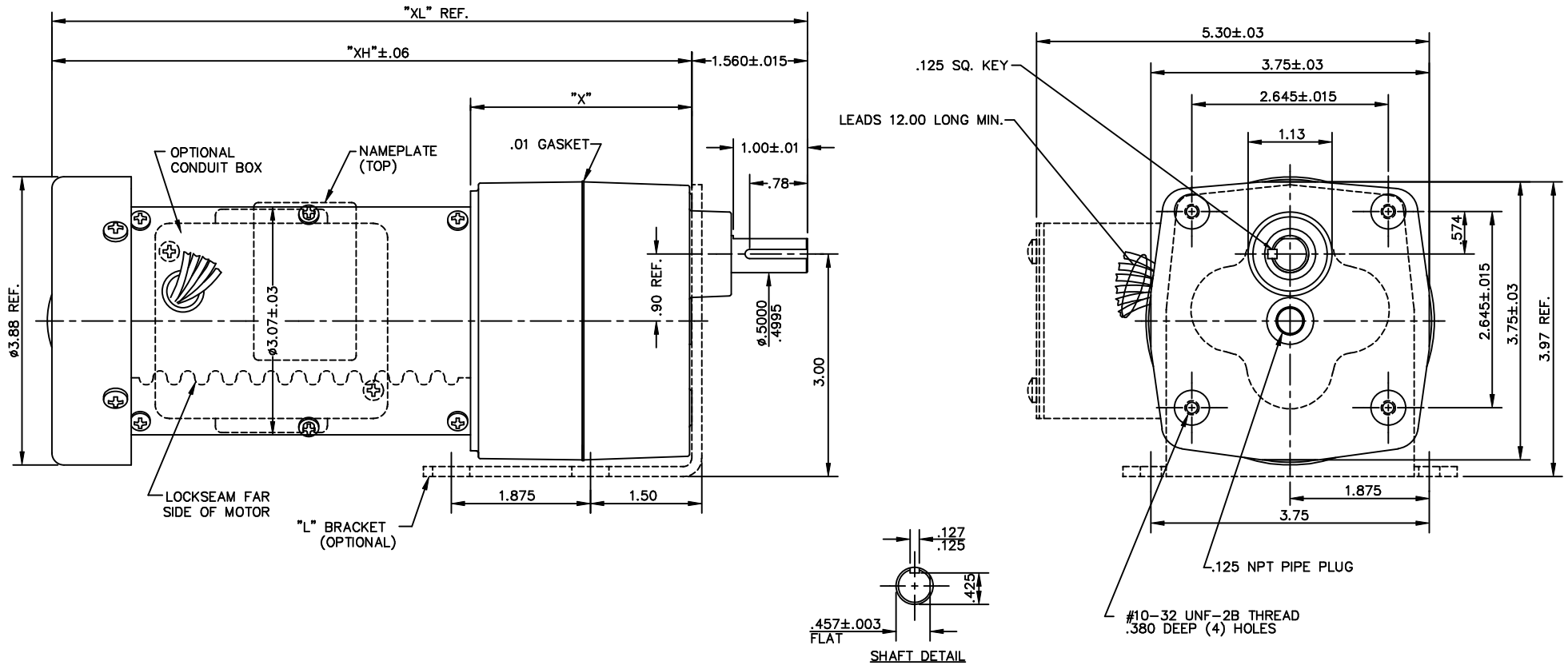
Nameplate Specifications

| | | | |
|----------------------------|------------------------------------|------------------------|-------------------|
| Output HP | 0.06 Hp | Output KW | 0.04 kW |
| Frequency | 60 Hz | Voltage | 115 V |
| Current | 0.90 A | Speed | 283 rpm |
| Service Factor | 1 | Phase | 1 |
| Duty | Continuous | Insulation Class | F |
| KVA Code | C | Frame | 31 |
| Enclosure | Totally Enclosed Fan Cooled | Overload Protector | No |
| Ambient Temperature | 40 °C | Drive End Bearing Size | 6000 |
| Opp Drive End Bearing Size | 6000 | UL | Recognized |
| CSA | Y | CE | Y |

Technical Specifications

| | | | |
|-----------------|--------------------------|--------------------|--------------------|
| Rotation | Reversible | Mounting | Special |
| Shaft Type | Parallel | Overall Length | 9.62 in |
| Frame Length | 4.63 in | Shaft Diameter | 0.500 in |
| Shaft Extension | 1 in | | |
| Outline Drawing | M1030607-M1125133 | Connection Diagram | M1005089.01 |

This is an uncontrolled document once printed or downloaded and is subject to change without notice. Date Created: 10/15/2018

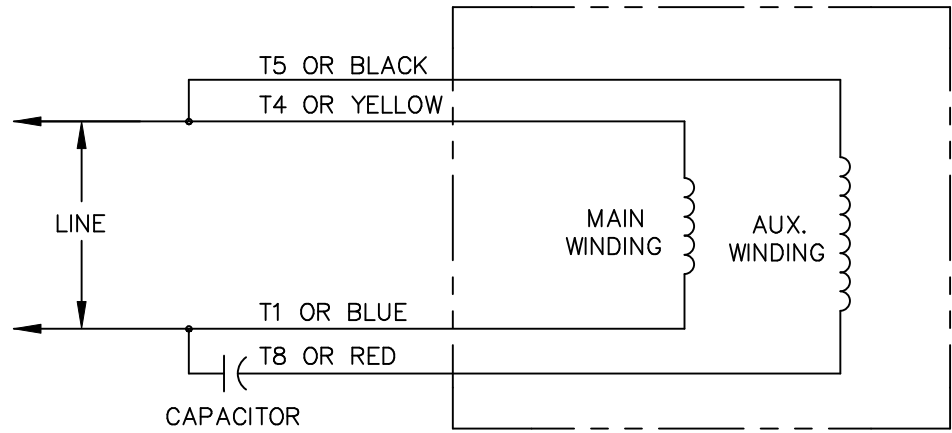


| CAT. NO. | HP | RATIO NOMINAL | SAFE TORQUE LB.-IN | RPM OUT-PUT | "XL" DIM. | "X" DIM. | "XH" DIM. |
|-------------|------|---------------|--------------------|-------------|-----------|----------|-----------|
| M1125127.00 | 1/15 | 180:1 | 100 | 9.4 | 10.42 | 3.23 | 8.86 |
| M1125128.00 | 1/15 | 90:1 | 100 | 19 | 10.42 | 3.23 | 8.86 |
| M1125129.00 | 1/15 | 60:1 | 100 | 28 | 9.62 | 2.43 | 8.06 |
| M1125130.00 | 1/15 | 30:1 | 56 | 57 | 9.62 | 2.43 | 8.06 |
| M1125131.00 | 1/15 | 18:1 | 34 | 94 | 9.62 | 2.43 | 8.06 |
| M1125132.00 | 1/15 | 12:1 | 24 | 142 | 9.32 | 2.13 | 7.76 |
| M1125133.00 | 1/15 | 6:1 | 12 | 283 | 9.32 | 2.13 | 7.76 |

NOTES:

- 1- ALL GEARING IS STEEL IN COMPOSITION.
- 2- GEARING IS OF AGMA #8 QUALITY OR BETTER.

| NO. | | REVISION | BY & DATE | CHK | ANG | ±1/2" | FINISH | LEESON STOCK | PREV | |
|--|--|----------|-----------|-------|--------|-------|---|----------------------|---|-----------------------------------|
| 05 | ADDED (TOP) TO NAMEPLATE NOTE, FOR CLARITY | BJB | 03/08/05 | DEC. | INCHES | ±.1 | | | | |
| 04 | REVISED CONDUIT BOX MOUNTING HOLE LOCATION | BJB | 08/19/02 | RDW | X | | | | | |
| 03 | ROTATED FLAT 180° ON SHAFT PER ECR 79989 | RLW | 07/23/02 | .XX | ±.03 | | | | | |
| 02 | CORRECTED "X", "XH", AND "XL" DIMENSIONS | SAD | 03/15/00 | SPV | .XXX | ±.005 | | | | |
| 01 | CORRECTED PRINT TO PICTORIAL MATCH MOTOR | SAD | 02/09/98 | .XXXX | ±.0005 | | | | | |
| TOLERANCES UNLESS SPECIFIED | | | | | | | | | ELECTRIC MOTORS GEARMOTORS AND DRIVES | DRAWN SPV 10/09/97 CHK APPD |
| THIS DRAWING IN DESIGN AND DETAIL IS OUR PROPERTY AND MUST NOT BE USED EXCEPT IN CONNECTION WITH OUR WORK ALL RIGHTS OF DESIGN AND INVENTION ARE RESERVED THIS IS AN ELECTRONICALLY GENERATED DOCUMENT - DO NOT SCALE THIS PRINT | | | | | | | TITLE OUTLINE 31 FRAME A.C. PZ GEARBOX | | SCALE 3=4 REF M1030348.00 FMF M1125050.00 | REV. 05 |
| CAD FILE M1030607 | | | | | | | SIZE B | DRAWING NO. M1030607 | | |



CONNECTIONS SHOWN FOR CCW ROTATION FACING LEAD END.
 TO REVERSE ROTATION INTERCHANGE T4(YELLOW) AND T1(BLUE) LEADS

| | | | | | | | | | |
|---|--|---------|----------|---------------------------------------|---------|------------------------------------|---|------|-------------|
| | | | | TOLERANCES UNLESS OTHERWISE SPECIFIED | | LEESON ELECTRIC CORPORATION | | | |
| | | | | DECIMALS | | | | | |
| | | | | .00 | ± .01 | DRAWN SJB 12/21/89 | TITLE | | |
| 02 | ADDED T1 AND T4 TO REVERSE INSTUCTIONS | DWD | 4/7/97 | .000 | ± .005 | CH'K'D. | EXTERNAL WIRING DIAGRAM | | |
| 01 | REDRAWN ON CAD | RJB PTZ | 11/16/92 | .0000 | ± .0005 | APPR. | MAT'L. "P" TYPE W/O PROTECTOR | | |
| NO. | REVISION | BY | DATE | FRACTIONS | ± 1/64 | SCALE 1=1 | DUAL ROT., ROT. BASED ON ODD # GEAR STAGE | | |
| THIS DRAWING IN DESIGN AND DETAIL IS OUR PROPERTY AND MUST NOT BE USED EXCEPT IN CONNECTION WITH OUR WORK ALL RIGHTS OF DESIGN AND INVENTION ARE RESERVED | | | | ANGLES | ± 1/2" | REF. | FINISH | SIZE | DRAWING NO. |
| | | | | INCH/MM | | FMF | | A | M1005089.01 |
| | | | | | | | | | |