

PRODUCT INFORMATION PACKET



Model No: CM31P17FZ4A

Catalog No: M1125130.00

PZ...30:1.57RPM.56LBIN..06HP.31...AC GEARMOTORS SUB-FHP./115V.1PH.60HZ.TEFC.CM31P17FZ4A
PZ Series



Regal and Leeson are trademarks of Regal Beloit Corporation or one of its affiliated companies.

©2018 Regal Beloit Corporation, All Rights Reserved. MC017097E





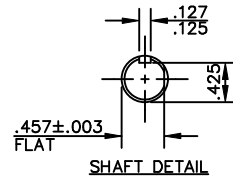
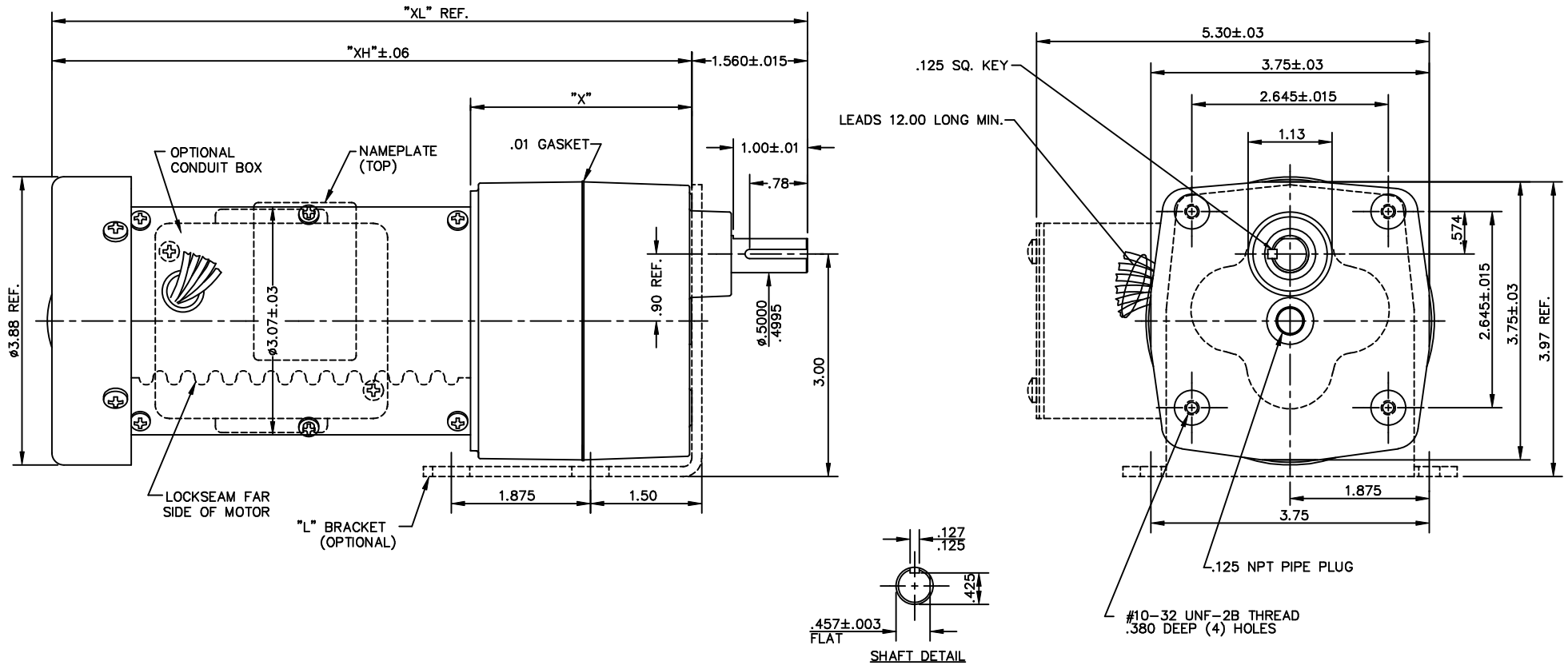
Nameplate Specifications

Output HP	0.06 Hp	Output KW	0.04 kW
Frequency	60 Hz	Voltage	115 V
Current	0.90 A	Speed	57 rpm
Service Factor	1	Phase	1
Duty	Continuous	Insulation Class	F
KVA Code	C	Frame	31
Enclosure	Totally Enclosed Fan Cooled	Overload Protector	No
Ambient Temperature	40 °C	Drive End Bearing Size	6000
Opp Drive End Bearing Size	6000	UL	Recognized
CSA	Y	CE	Y

Technical Specifications

Rotation	Reversible	Mounting	Special
Shaft Type	Parallel	Overall Length	9.62 in
Frame Length	4.63 in	Shaft Diameter	0.500 in
Shaft Extension	1 in		
Outline Drawing	M1030607-M1125130	Connection Diagram	M1005089.01


This is an uncontrolled document once printed or downloaded and is subject to change without notice. Date Created: 10/15/2018

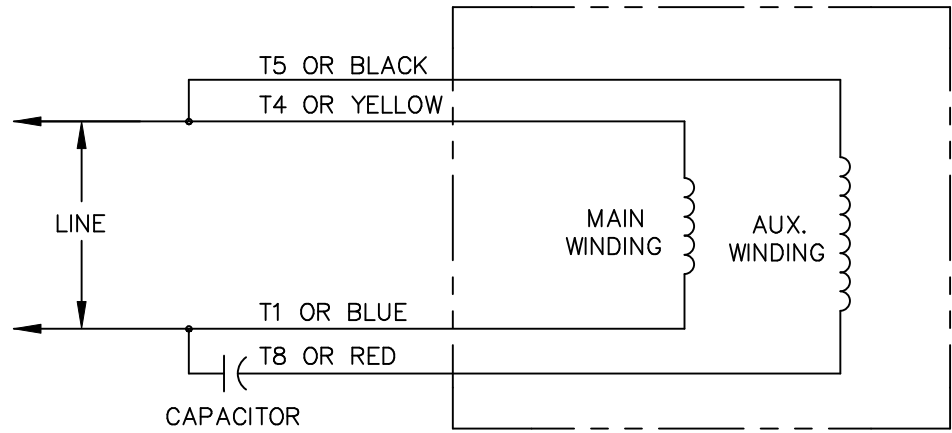


CAT. NO.	HP	RATIO NOMINAL	SAFE TORQUE LB.-IN	RPM OUT-PUT	"XL" DIM.	"X" DIM.	"XH" DIM.
M1125127.00	1/15	180:1	100	9.4	10.42	3.23	8.86
M1125128.00	1/15	90:1	100	19	10.42	3.23	8.86
M1125129.00	1/15	60:1	100	28	9.62	2.43	8.06
M1125130.00	1/15	30:1	56	57	9.62	2.43	8.06
M1125131.00	1/15	18:1	34	94	9.62	2.43	8.06
M1125132.00	1/15	12:1	24	142	9.32	2.13	7.76
M1125133.00	1/15	6:1	12	283	9.32	2.13	7.76

NOTES:

- 1- ALL GEARING IS STEEL IN COMPOSITION.
- 2- GEARING IS OF AGMA #8 QUALITY OR BETTER.

NO.		REVISION	BY & DATE	CHK	ANG	±1/2"	FINISH	LEESON STOCK	PREV			
05	ADDED (TOP) TO NAMEPLATE NOTE, FOR CLARITY	BJB	03/08/05	DEC.	INCHES	±.1	 ELECTRIC MOTORS GEARMOTORS AND DRIVES	DRAWN	SPV 10/09/97			
04	REVISED CONDUIT BOX MOUNTING HOLE LOCATION	BJB	08/19/02	RDW	X	±.1		CHK				
03	ROTATED FLAT 180° ON SHAFT PER ECR 79989	RLW	07/23/02	.XX	±.03	TITLE	OUTLINE	APPD				
02	CORRECTED "X", "XH", AND "XL" DIMENSIONS	SAD	03/15/00	SPV	.XXX	±.005	31 FRAME A.C. PZ GEARBOX	SCALE	3=4			
01	CORRECTED PRINT TO PICTORIAL MATCH MOTOR	SAD	02/09/98	.XXXX	±.0005	MAT'L		REF	M1030348.00			
NO.		REVISION	BY & DATE	CHK	ANG	±1/2"	FINISH	LEESON STOCK	PREV			
THIS DRAWING IN DESIGN AND DETAIL IS OUR PROPERTY AND MUST NOT BE USED EXCEPT IN CONNECTION WITH OUR WORK ALL RIGHTS OF DESIGN AND INVENTION ARE RESERVED THIS IS AN ELECTRONICALLY GENERATED DOCUMENT - DO NOT SCALE THIS PRINT							RFP	CAD FILE	M1030607	SIZE	DRAWING NO.	REV.
							DIST			B	M1030607	05



CONNECTIONS SHOWN FOR CCW ROTATION FACING LEAD END.
 TO REVERSE ROTATION INTERCHANGE T4(YELLOW) AND T1(BLUE) LEADS

				TOLERANCES UNLESS OTHERWISE SPECIFIED		LEESON ELECTRIC CORPORATION			
				DECIMALS					
				.00	± .01	DRAWN SJB 12/21/89	TITLE		
02	ADDED T1 AND T4 TO REVERSE INSTUCTIONS	DWD	4/7/97	.000	± .005	CH'K'D.	EXTERNAL WIRING DIAGRAM		
01	REDRAWN ON CAD	RJB PTZ	11/16/92	.0000	± .0005	APPR.	MAT'L. "P" TYPE W/O PROTECTOR		
NO.	REVISION	BY	DATE	FRACTIONS	± 1/64	SCALE 1=1	DUAL ROT., ROT. BASED ON ODD # GEAR STAGE		
THIS DRAWING IN DESIGN AND DETAIL IS OUR PROPERTY AND MUST NOT BE USED EXCEPT IN CONNECTION WITH OUR WORK ALL RIGHTS OF DESIGN AND INVENTION ARE RESERVED				ANGLES	± 1/2°	REF.	FINISH	SIZE	DRAWING NO.
				INCH/MM		FMF		A	M1005089.01