

# PRODUCT INFORMATION PACKET



Model No: CM31P17FZ1A  
Catalog No: M1125127.00  
PZ...180:1.9.4RPM.100LBIN..06HP.31...AC GEARMOTORS SUB-  
FHP./115V.1PH.60HZ.TEFC.CM31P17FZ1A  
PZ Series



Regal and Leeson are trademarks of Regal Beloit Corporation or one of its affiliated companies.

©2018 Regal Beloit Corporation, All Rights Reserved. MC017097E





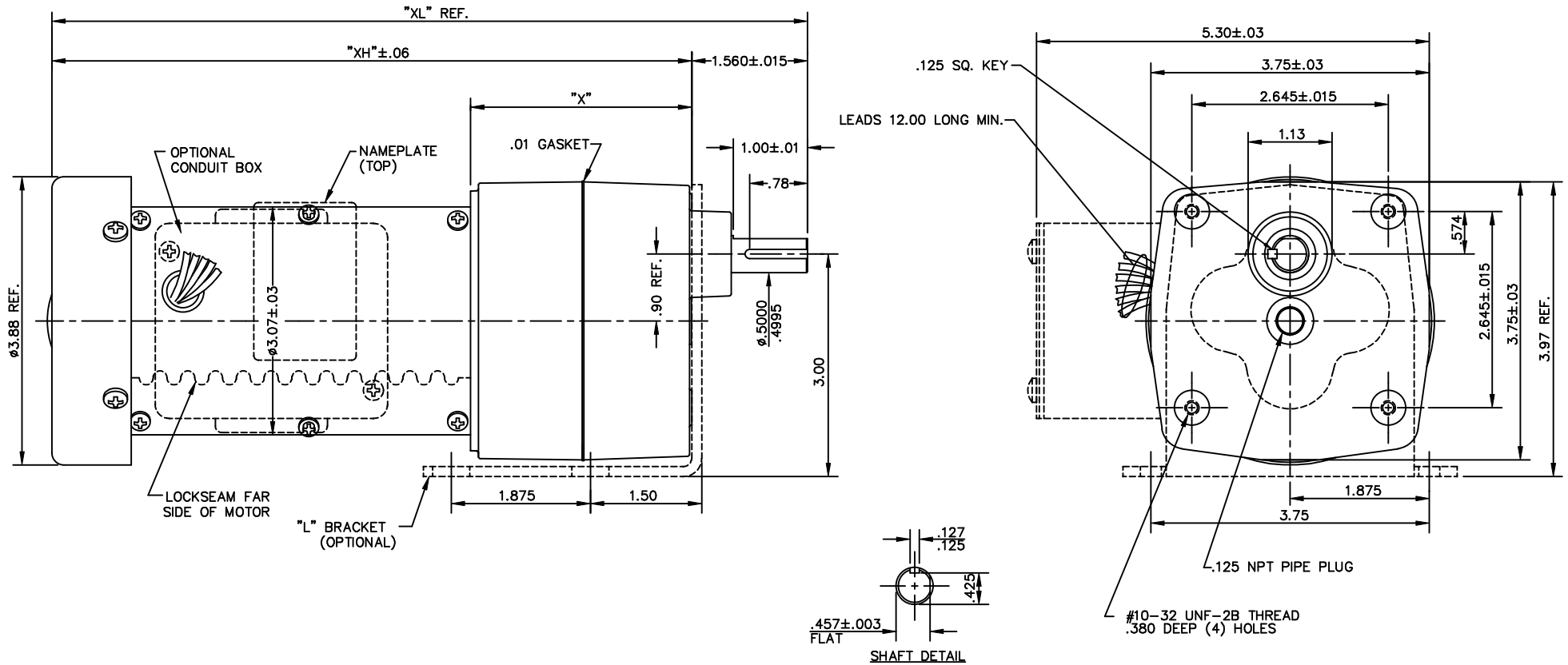
### Nameplate Specifications

Output HP	<b>0.06 Hp</b>	Output KW	<b>0.04 kW</b>
Frequency	<b>60 Hz</b>	Voltage	<b>115 V</b>
Current	<b>0.90 A</b>	Speed	<b>9 rpm</b>
Service Factor	<b>1</b>	Phase	<b>1</b>
Duty	<b>Continuous</b>	Insulation Class	<b>F</b>
KVA Code	<b>C</b>	Frame	<b>31</b>
Enclosure	<b>Totally Enclosed Fan Cooled</b>	Overload Protector	<b>No</b>
Ambient Temperature	<b>40 °C</b>	Drive End Bearing Size	<b>6000</b>
Opp Drive End Bearing Size	<b>6000</b>	UL	<b>Recognized</b>
CSA	<b>Y</b>	CE	<b>Y</b>

### Technical Specifications

Rotation	<b>Reversible</b>	Mounting	<b>Special</b>
Shaft Type	<b>Parallel</b>	Overall Length	<b>10.42 in</b>
Frame Length	<b>4.63 in</b>	Shaft Diameter	<b>0.500 in</b>
Shaft Extension	<b>1 in</b>		
Outline Drawing	<b>M1030607-M1125127</b>	Connection Diagram	<b>M1005089.01</b>

**This is an uncontrolled document once printed or downloaded and is subject to change without notice. Date Created: 10/15/2018**

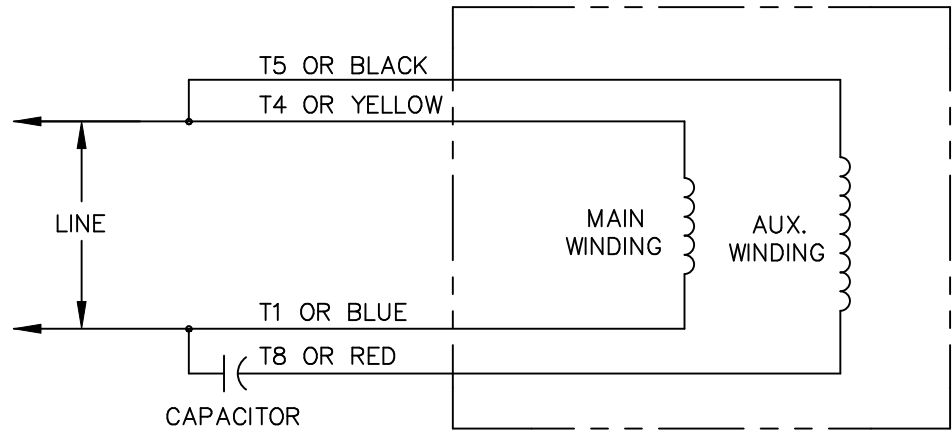


CAT. NO.	HP	RATIO NOMINAL	SAFE TORQUE LB.-IN	RPM OUT-PUT	"XL" DIM.	"X" DIM.	"XH" DIM.
M1125127.00	1/15	180:1	100	9.4	10.42	3.23	8.86
M1125128.00	1/15	90:1	100	19	10.42	3.23	8.86
M1125129.00	1/15	60:1	100	28	9.62	2.43	8.06
M1125130.00	1/15	30:1	56	57	9.62	2.43	8.06
M1125131.00	1/15	18:1	34	94	9.62	2.43	8.06
M1125132.00	1/15	12:1	24	142	9.32	2.13	7.76
M1125133.00	1/15	6:1	12	283	9.32	2.13	7.76

**NOTES:**

- 1- ALL GEARING IS STEEL IN COMPOSITION.
- 2- GEARING IS OF AGMA #8 QUALITY OR BETTER.

NO.		REVISION	BY & DATE	CHK	ANG	±1/2"	FINISH	LEESON STOCK	PREV
05	ADDED (TOP) TO NAMEPLATE NOTE, FOR CLARITY	BJB	03/08/05	DEC.	INCHES	±.1	ELECTRIC MOTORS GEARMOTORS AND DRIVES	DRAWN	SPV 10/09/97
04	REVISED CONDUIT BOX MOUNTING HOLE LOCATION	BJB	08/19/02	RDW	X	±.1		CHK	
03	ROTATED FLAT 180° ON SHAFT PER ECR 79989	RLW	07/23/02	.XX	±.03	TITLE		3=4	
02	CORRECTED "X", "XH", AND "XL" DIMENSIONS	SAD	03/15/00	SPV	.XXX	±.005		REF	M1030348.00
01	CORRECTED PRINT TO PICTORIAL MATCH MOTOR	SAD	02/09/98	.XXXX	±.0005	MAT'L		FMF	M1125050.00
THIS DRAWING IN DESIGN AND DETAIL IS OUR PROPERTY AND MUST NOT BE USED EXCEPT IN CONNECTION WITH OUR WORK ALL RIGHTS OF DESIGN AND INVENTION ARE RESERVED THIS IS AN ELECTRONICALLY GENERATED DOCUMENT - DO NOT SCALE THIS PRINT		RFP	CAD FILE	M1030607	SIZE	DRAWING NO.	REV.		
							B	M1030607	05



CONNECTIONS SHOWN FOR CCW ROTATION FACING LEAD END.  
 TO REVERSE ROTATION INTERCHANGE T4(YELLOW) AND T1(BLUE) LEADS

				TOLERANCES UNLESS OTHERWISE SPECIFIED		<b>LEESON</b> ELECTRIC CORPORATION			
				DECIMALS					
				.00	± .01	DRAWN SJB 12/21/89	TITLE		
02	ADDED T1 AND T4 TO REVERSE INSTUCTIONS	DWD	4/7/97	.000	± .005	CH'K'D.	EXTERNAL WIRING DIAGRAM		
01	REDRAWN ON CAD	RJB PTZ	11/16/92	.0000	± .0005	APPR.	MAT'L. "P" TYPE W/O PROTECTOR		
NO.	REVISION	BY	DATE	FRACTIONS	± 1/64	SCALE 1=1	DUAL ROT., ROT. BASED ON ODD # GEAR STAGE		
THIS DRAWING IN DESIGN AND DETAIL IS OUR PROPERTY AND MUST NOT BE USED EXCEPT IN CONNECTION WITH OUR WORK ALL RIGHTS OF DESIGN AND INVENTION ARE RESERVED				ANGLES	± 1/2°	REF.	FINISH	SIZE	DRAWING NO.
				INCH/MM		FMF		A	M1005089.01