

PRODUCT INFORMATION PACKET



Model No: C6T17DK33B

Catalog No: E116763.00

E116763.00..1HP..1760RPM.56C.DP.230/460V.3PH.60HZ.CONT.40C.1.25SF.RIGID C
FACE.C6T17DK33.....GENERAL PURPOSE.NOT.....

Open Drip Proof (ODP)



Regal and Leeson are trademarks of Regal Beloit Corporation or one of its affiliated companies.

©2018 Regal Beloit Corporation, All Rights Reserved. MC017097E



Product Information Packet: Model No: C6T17DK33B, Catalog No:E116763.00
 E116763.00..1HP..1760RPM.56C.DP.230/460V.3PH.60HZ.CONT.40C.1.25SF.RIGID C
 FACE.C6T17DK33.....GENERAL PURPOSE.NOT.....



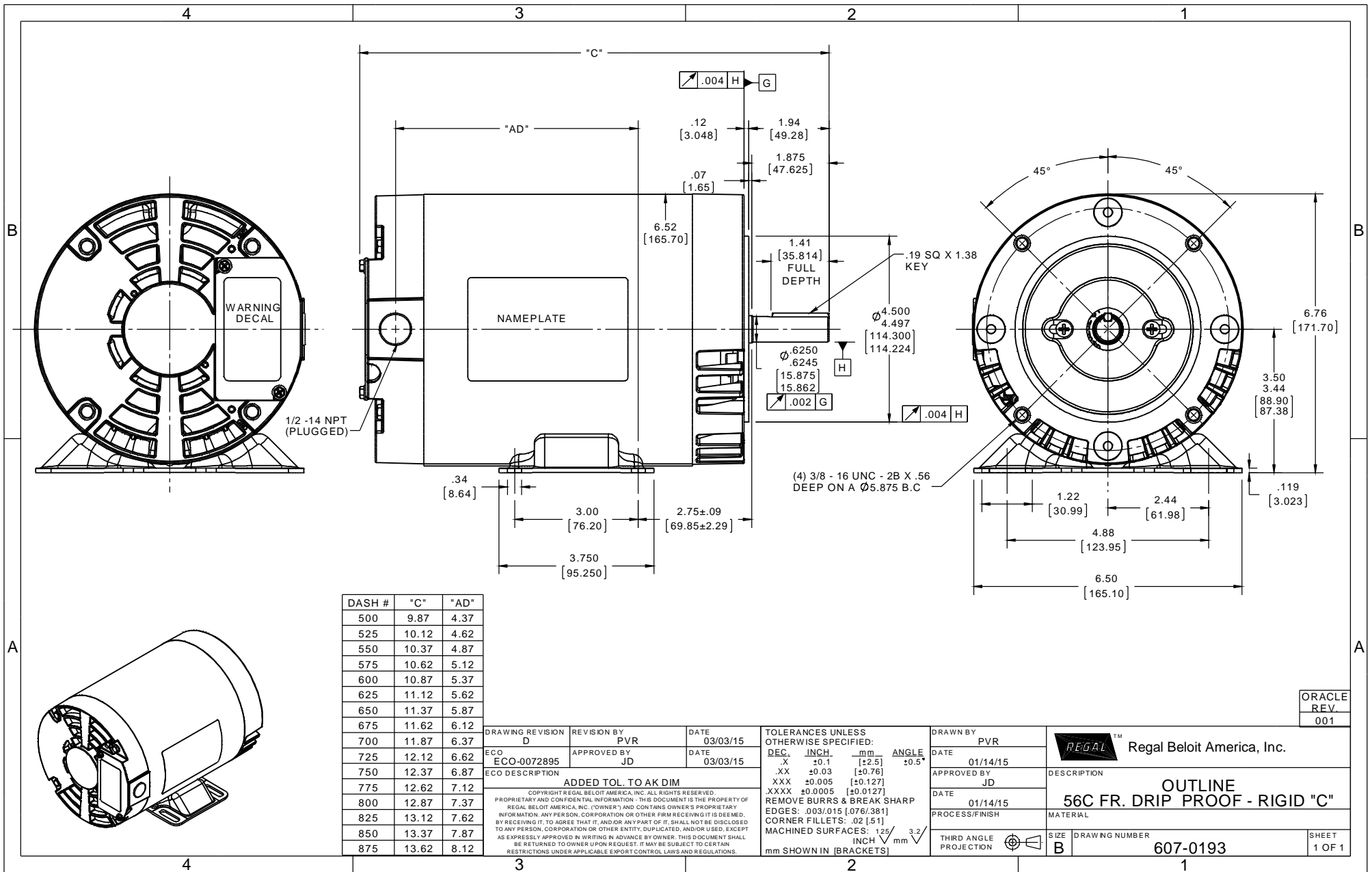
Nameplate Specifications

Output HP	1 Hp	Output KW	0.75 kW
Frequency	60 Hz	Voltage	230/460 V
Current	3.2/1.6 A	Speed	1760 rpm
Service Factor	1.25	Phase	3
Efficiency	83.5 %	Duty	Continuous
Insulation Class	F	Design Code	B
KVA Code	N	Frame	56C
Enclosure	Drip Proof	Overload Protector	No
Ambient Temperature	40 °C	Drive End Bearing Size	6203
Opp Drive End Bearing Size	6203	UL	Recognized
CSA	Y	CE	Y
IP Code	22		

Technical Specifications

Electrical Type	Squirrel Cage Inverter Rated	Starting Method	Line Or Inverter
Poles	4	Rotation	Reversible
Mounting	Rigid base	Motor Orientation	HORIZONTAL
Drive End Bearing	BALL	Opp Drive End Bearing	BALL
Frame Material	Rolled Steel	Shaft Type	T
Overall Length	12.12 in	Frame Length	7.25 in
Shaft Diameter	0.625 in	Shaft Extension	1.88 in
Assembly/Box Mounting	F1 ONLY		
Outline Drawing	607-0193-725	Connection Diagram	005010.20

This is an uncontrolled document once printed or downloaded and is subject to change without notice. Date Created: 10/15/2018



DASH #	"C"	"AD"
500	9.87	4.37
525	10.12	4.62
550	10.37	4.87
575	10.62	5.12
600	10.87	5.37
625	11.12	5.62
650	11.37	5.87
675	11.62	6.12
700	11.87	6.37
725	12.12	6.62
750	12.37	6.87
775	12.62	7.12
800	12.87	7.37
825	13.12	7.62
850	13.37	7.87
875	13.62	8.12

DRAWING REVISION D	REVISION BY PVR	DATE 03/03/15
ECO ECO-0072895	APPROVED BY JD	DATE 03/03/15
ECO DESCRIPTION ADDED TOL. TO AK DIM		
<small>COPYRIGHT REGAL BELOIT AMERICA, INC. ALL RIGHTS RESERVED. PROPRIETARY AND CONFIDENTIAL INFORMATION - THIS DOCUMENT IS THE PROPERTY OF REGAL BELOIT AMERICA, INC. (OWNER) AND CONTAINS OWNER'S PROPRIETARY INFORMATION. ANY PERSON, CORPORATION OR OTHER FIRM RECEIVING IT IS DEEMED, BY RECEIVING IT, TO AGREE THAT IT, AND/OR ANY PART OF IT, SHALL NOT BE DISCLOSED TO ANY PERSON, CORPORATION OR OTHER ENTITY, DUPLICATED, AND/OR USED, EXCEPT AS EXPRESSLY APPROVED IN WRITING IN ADVANCE BY OWNER. THIS DOCUMENT SHALL BE RETURNED TO OWNER UPON REQUEST. IT MAY BE SUBJECT TO CERTAIN RESTRICTIONS UNDER APPLICABLE EXPORT CONTROL LAWS AND REGULATIONS.</small>		

TOLERANCES UNLESS OTHERWISE SPECIFIED:			
DEC.	INCH.	mm	ANGLE
.X	±0.1	[±2.5]	±0.5°
.XX	±0.03	[±0.76]	
.XXX	±0.005	[±0.127]	
.XXXX	±0.0005	[±0.0127]	
REMOVE BURRS & BREAK SHARP EDGES: .003/.015 [0.076/.381] CORNER FILLETS: .02 [5.1]			
MACHINED SURFACES: 125 INCH/mm 3.2 mm SHOWN IN [BRACKETS]			

DRAWN BY PVR	DATE 01/14/15
APPROVED BY JD	DATE 01/14/15
PROCESS/FINISH	
THIRD ANGLE PROJECTION	

ORACLE REV. 001	Regal Beloit America, Inc.
DESCRIPTION 56C FR. DRIP PROOF - RIGID "C"	
SIZE B	DRAWING NUMBER 607-0193
SHEET 1 OF 1	

VIEW FROM OUTSIDE OF MOTOR AT SWITCH END. Uncontrolled Copy



LINE LEADS



VOLTAGE	L1	L2	L3	JOIN & INSULATE
HIGH	T1	T2	T3	(T4,T7) (T5,T8) (T6,T9)
LOW	T1,T7	T2,T8	T3,T9	T4,T5,T6

DRAWING REVISION **G** REVISION BY **MVG** DATE **04/05/2017**

ECO **ECO-0121253** APPROVED BY **SM** DATE **04/05/2017**

ECO DESCRIPTION
ADDED P1 & P2 FOR TSTAT

COPYRIGHT REGAL BELOIT AMERICA, INC. ALL RIGHTS RESERVED.
PROPRIETARY AND CONFIDENTIAL INFORMATION - THIS DOCUMENT IS THE PROPERTY OF
REGAL BELOIT AMERICA, INC. ('OWNER') AND CONTAINS OWNER'S PROPRIETARY
INFORMATION. ANY PERSON, CORPORATION OR OTHER FIRM RECEIVING IT IS DEEMED,
BY RECEIVING IT, TO AGREE THAT IT, AND/OR ANY PART OF IT, SHALL NOT BE DISCLOSED
TO ANY PERSON, CORPORATION OR OTHER ENTITY, DUPLICATED, AND/OR USED, EXCEPT
AS EXPRESSLY APPROVED IN WRITING IN ADVANCE BY OWNER. THIS DOCUMENT SHALL
BE RETURNED TO OWNER UPON REQUEST. IT MAY BE SUBJECT TO CERTAIN
RESTRICTIONS UNDER APPLICABLE EXPORT CONTROL LAWS AND REGULATIONS.

TOLERANCES UNLESS OTHERWISE SPECIFIED:

DEC.	INCH	mm	ANGLE
.X	±0.1	[±2.5]	±0.5°
.XX	±0.01	[±0.25]	
.XXX	±0.005	[±0.127]	
.XXXX	±0.0005	[±0.0127]	

REMOVE BURRS & BREAK SHARP EDGES: .003/.015 [.076/.381] X 45°
CORNER FILLETS: R.02 [.51]
MACHINED SURFACES: 125/3.2 INCH/mm
mm SHOWN IN [BRACKETS]

DRAWN BY **DBT 12/16/97**

DATE

APPROVED BY **KH 12/17/97**

DATE

REFERENCE

THIRD ANGLE PROJECTION

REGAL™ Regal Beloit America, Inc.

DESCRIPTION
CONN DIAGRAM-EXTERNAL
3 PHASE WITH PROTECTOR

MATERIAL **DECAL - 004014 (TSTAT) - 080582** PROCESS/FINISH **STOCK**

SIZE **A** DRAWING NUMBER **00501020** SHEET **1 OF 1**



CERTIFICATION DATA SHEET

1051 CHEYENNE AVE.
 GRAFTON, WI 53024
 PH, 262-377-8810

CATALOG #: E116763.00

CONN. DIAGRAM: 005010.20

OUTLINE: 607-0193-725

MOUNTING: F1 ONLY

WINDING #: T634342 DR 3 H

TYPICAL MOTOR PERFORMANCE DATA

HP	KW	SYNC. RPM	F.L. RPM	FRAME	ENCLOSURE	KVA CODE	DESIGN
1&1	0.75&0.75	1800	1760&1450	56C	DP	N	B

PH	Hz	VOLTS	AMPS	START TYPE	DUTY	INSL	S.F.	AMB°C
3	60/50	230/460&190/380	3.2/1.6&3.6/1.8	LINE OR INVERTER	CONTINUOUS	F4	1.25/1.25	40

FULL LOAD EFF:	83.5&83.5	3/4 LOAD EFF:	85.2	1/2 LOAD EFF:	81.7	GTD. EFF	84	ELEC. TYPE
FULL LOAD PF:	68.5&68.5	3/4 LOAD PF:	62.8	1/2 LOAD PF:	48	SQ CAGE INV RATED		

F.L. TORQUE	LOCKED ROTOR AMPS	L,R. TORQUE	B,D. TORQUE	F.L. RISE°C
3 LB-FT	28 / 14	12 LB-FT 0 %	15.8 LB-FT 0 %	0

SOUND PRESSURE @ 3 FT.	SOUND POWER	ROTOR WK^2	MAX. WK^2	SAFE STALL TIME	STARTS / HOUR	APPROX. MOTOR WGT
0 DBA	10 DBA	0.117 LB-FT^2	0.1 LB-FT^2	10 SEC.	2	0 LBS.

*** SUPPLEMENTAL INFORMATION ***

DE BRACKET TYPE	ODE BRACKET TYPE	MOUNT TYPE	ORIENTATION	SEVERE DUTY	HAZARDOUS LOCATION	DRIP COVER	SCREENS	PAINT
C-FACE	STANDARD	RIGID	HORIZONTAL	FALSE	NONE	FALSE	NONE	GREEN - LEESON WATTS AVER

BEARINGS DE ODE	GREASE	SHAFT TYPE	SPECIAL DE	SPECIAL ODE	SHAFT MATERIAL	FRAME MATERIAL
BALL BALL	POLYREX EM	T	NONE	NONE	1144 STRESSPROOF (C-223)	ROLLED STEEL

THERMO-PROTECTORS						
THERMOSTATS	PROTECTORS	WDG RTDS	BRG RTDS	THERMISTORS	CONTROL	SPACE HEATERS
TSTATS (N/C)	NOT	NONE	NONE	NONE	FALSE	NONE VOLTS

* INVERTER TORQUE: CONSTANT 10:1

INV. HP SPEED RANGE: 1.1 X BASE SPEED

ENCODER:	NONE
NONE	NONE
NONE	PPR

BRAKE:	NONE	NONE
NONE	P/N NONE	
NONE	NONE	
NONE	FT-LB	NONE V NONE HZ

S

Data Sheet

Date: 1/18/2018

E116763.00



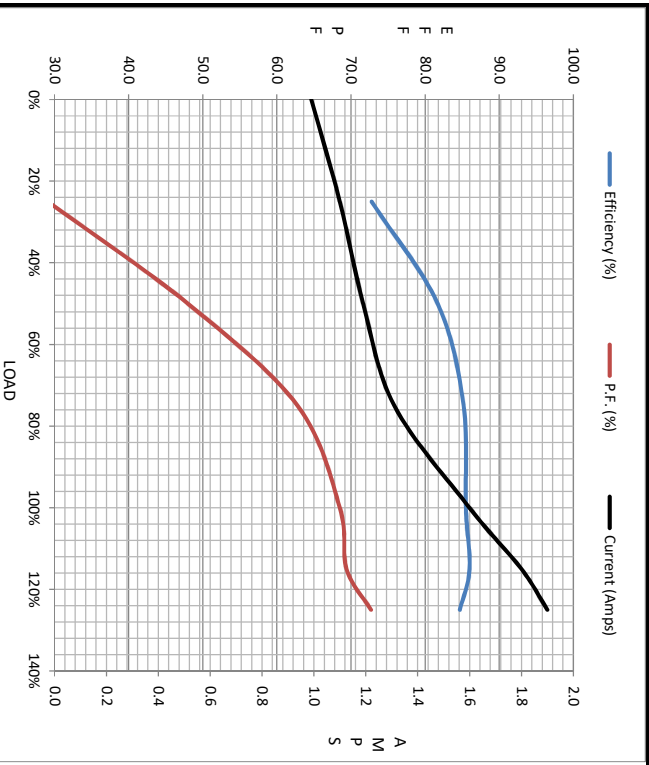
Data @ 460 V

Motor Load Data

Load	0%	25%	50%	75%	100%	115%	125%	LR
Current (Amps)	0.99	1.10	1.19	1.31	1.60	1.80	1.90	14.5
Torque (ft-lb)	0.00	0.73	1.47	2.22	2.98	3.4	3.8	12.0
RPM	1800	1791	1780	1770	1760	1754	1749	0
Efficiency (%)		72.8	81.7	85.2	85.5	86.0	84.7	
P.F. (%)		29.1	48.0	62.8	68.5	69.4	72.7	0.0

Motor Speed Data

	LR	Pull-Up	BD	Rated	Idle	Information Block			
Speed (RPM)	0	900	1575	1760	1800	HP	1.0	1800	140
Current (Amps)	14.5	13.0	9.9	1.60	0.99	Sync. RPM	1800	DP	140
Torque (ft-lb)	12.0	11.0	15.0	2.98	0.00	Enclosure	TDR	Construction	230/460#190/380
						Voltage	60	Frequency	Hz
						Design	A	LR Code letter	N
						Service Factor	1.15	Temp Rise @ FL	21 °C
						Duty	CONT	Ambient	40 °C
						Elevation	1,000	Rotor/Shaft wk ²	0.12
						Ref Wdg	T634342 DR	Sound Pressure @ 1M	0
						VFD Rating	CONSTANT 10:1	Outline Dwg	607-0193-725
						Conn. Diag	005010.20	Additional Specifications:	
								R1	R2
								X1	X2
								Xm	



EQUIV CKT (OHMS / PHASE)			
R1	R2	X1	Xm
0.0000	0.0000	0.0000	0.0000

