

PRODUCT INFORMATION PACKET



Model No: C6T17DB117B

Catalog No: E115827.00

E115827.00..1HP..1760RPM.56H.DP.230/460V.3PH.60HZ.CONT.40C.1.15SF.RIGID
BASE.C6T17DB117.....GENERAL PURPOSE.T-STAT.....

Open Drip Proof (ODP)



Regal and Leeson are trademarks of Regal Beloit Corporation or one of its affiliated companies.

©2018 Regal Beloit Corporation, All Rights Reserved. MC017097E





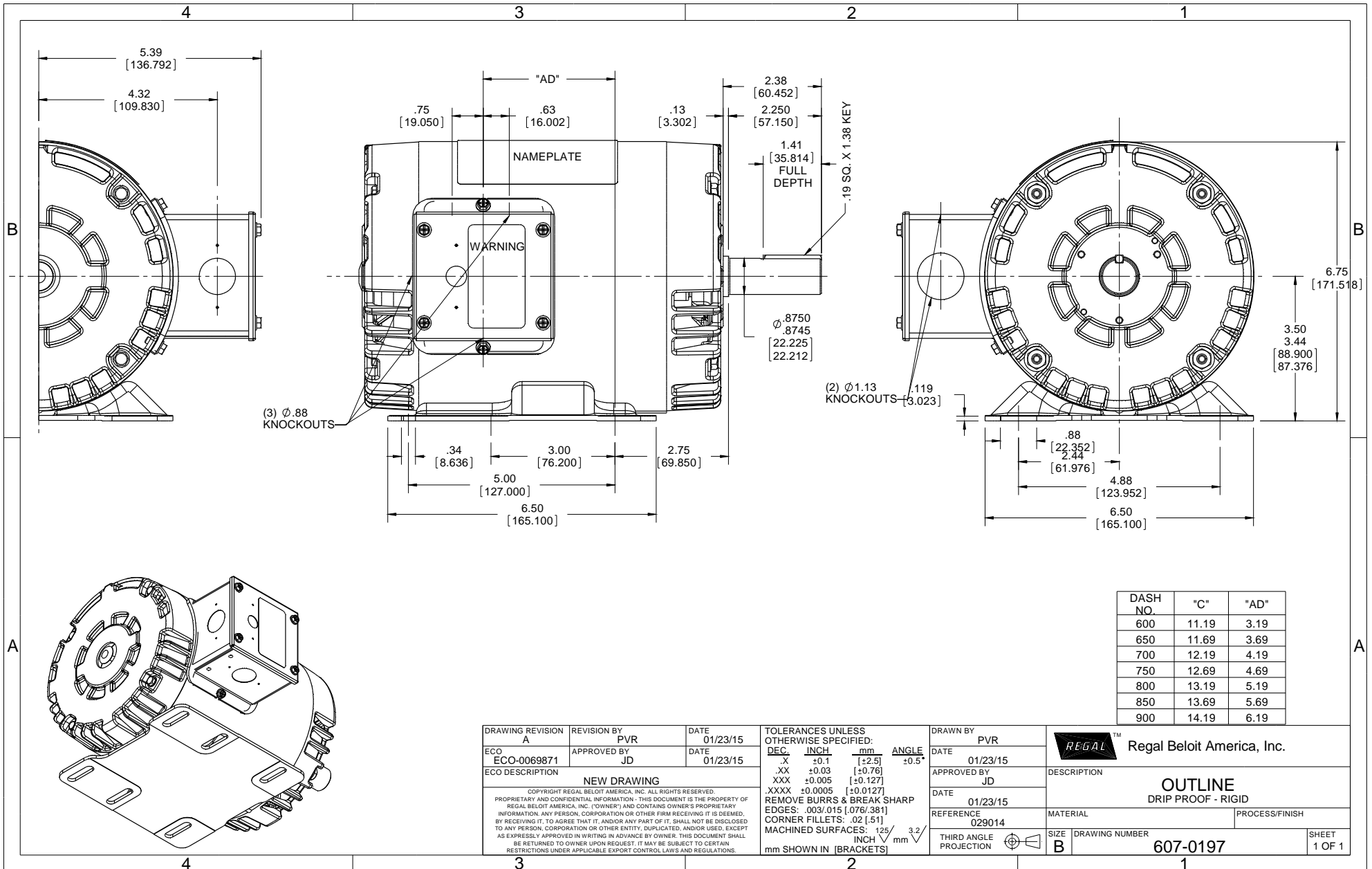
Nameplate Specifications

Output HP	1 Hp	Output KW	0.75 kW
Frequency	60 Hz	Voltage	230/460 V
Current	3.2/1.6 A	Speed	1760 rpm
Service Factor	1.15	Phase	3
Efficiency	83.5 %	Duty	Continuous
Insulation Class	F	Design Code	B
KVA Code	N	Frame	56HZ
Enclosure	Drip Proof	Overload Protector	No
Ambient Temperature	40 °C	Drive End Bearing Size	6205
Opp Drive End Bearing Size	6203	UL	Recognized
CSA	Y	CE	Y
IP Code	22		

Technical Specifications

Electrical Type	Squirrel Cage Inverter Rated	Starting Method	Line Or Inverter
Poles	4	Rotation	Reversible
Mounting	Rigid base	Motor Orientation	HORIZONTAL
Drive End Bearing	BALL	Opp Drive End Bearing	BALL
Frame Material	Rolled Steel	Shaft Type	Single Special Extension
Overall Length	12.19 in	Frame Length	7.00 in
Shaft Diameter	0.875 in	Shaft Extension	1.47 in
Assembly/Box Mounting	F1 ONLY		
Outline Drawing	607-0197-700	Connection Diagram	005010.20

This is an uncontrolled document once printed or downloaded and is subject to change without notice. Date Created: 10/15/2018



DASH NO.	"C"	"AD"
600	11.19	3.19
650	11.69	3.69
700	12.19	4.19
750	12.69	4.69
800	13.19	5.19
850	13.69	5.69
900	14.19	6.19

DRAWING REVISION A		REVISION BY PVR	DATE 01/23/15	TOLERANCES UNLESS OTHERWISE SPECIFIED:		DRAWN BY PVR		Regal Beloit America, Inc.
ECO ECO-0069871		APPROVED BY JD	DATE 01/23/15	DEC	INCH	mm	ANGLE	
ECO DESCRIPTION NEW DRAWING				.X	±0.1	[±2.5]	±0.5°	APPROVED BY JD
COPYRIGHT REGAL BELOIT AMERICA, INC. ALL RIGHTS RESERVED. PROPRIETARY AND CONFIDENTIAL INFORMATION - THIS DOCUMENT IS THE PROPERTY OF REGAL BELOIT AMERICA, INC. ("OWNER") AND CONTAINS OWNER'S PROPRIETARY INFORMATION. ANY PERSON, CORPORATION OR OTHER FIRM RECEIVING IT IS DEEMED, BY RECEIVING IT, TO AGREE THAT IT, AND/OR ANY PART OF IT, SHALL NOT BE DISCLOSED TO ANY PERSON, CORPORATION OR OTHER ENTITY, DUPLICATED, AND/OR USED, EXCEPT AS EXPRESSLY APPROVED IN WRITING IN ADVANCE BY OWNER. THIS DOCUMENT SHALL BE RETURNED TO OWNER UPON REQUEST. IT MAY BE SUBJECT TO CERTAIN RESTRICTIONS UNDER APPLICABLE EXPORT CONTROL LAWS AND REGULATIONS.				.XX	±0.03	[±0.76]		DATE 01/23/15
				.XXX	±0.005	[±0.127]		REFERENCE 029014
				XXXX	±0.0005	[±0.0127]		MATERIAL
				REMOVE BURRS & BREAK SHARP EDGES: .003/.015 [076/381]				DESCRIPTION OUTLINE DRIP PROOF - RIGID
				CORNER FILLETS: .02 [51]				PROCESS/FINISH
				MACHINED SURFACES: 125/3.2				SIZE B
				mm SHOWN IN [BRACKETS]				DRAWING NUMBER 607-0197
								SHEET 1 OF 1



P.O. BOX 8003
WAUSAU, WI 54401-8003
PH. 715-675-3311

DATA VOLTS: 460

CERTIFICATION DATA SHEET

CONN. DIAGRAM: 005010.20
OUTLINE: 607-0197-700
WINDING: T634342

CAT #: E115827.00

DR 3

TYPICAL MOTOR PERFORMANCE DATA

HP	KW	SYNC RPM	FL RPM	FRAME	ENCLOSURE	TYPE	KVA CODE	DESIGN	
1	0.75	1800	1760	56HZ	DP	TDR	N	B	
PH	HZ	VOLTS	AMPS	START TYPE	DUTY	INSL	S.F.	AMB	ELEV.
3	60/50	230/460#190/380	3.2/1.6&3/1.5	LINE OR INVERTER	CONT	F	1.15	40	3300
F.L. EFF	85.5	3/4 LD EFF	85.2	1/2 LD EFF	81.7	GTD EFF	84.0	ELECT. TYPE	
F.L. PF	68.5	3/4 LD PF	62.8	1/2 LD PF	48.0	SQ CAGE INVERTED			
F.L. TORQUE	LR AMPS @ 460 V	L.R. TORQUE	B.D. TORQUE	F.L. RISE (°C)					
2.98 LB-FT	14.5	12.0 LB-FT	403%	15.0 LB-FT	503%	21			
PRESSURE @ 3	POWER	ROTOR WK²	MAX. LOAD WK²	SAFE STALL TIME	STARTS/HOUR	MOTOR WGT			
0 DBA	9 DBA	0.12 LB-FT²	0.1 LB-FT²	10 SEC.	2	0 LB.			

*** SUPPLEMENTAL INFORMATION ***

DE BRACKET TYPE	ODE BRACKET TYPE	MOUNT TYPE	MOTOR ORIENTATION	SEVERE DUTY	HAZARDOUS LOCATION	DRIP COVER	SCREENS	PAINT
STANDARD	STANDARD	RIGID	HORIZONTAL	NO	NONE	NO	NONE	N - LEESON WATTS
BEARINGS	GREASE	SHAFT TYPE	SPECIAL DE	SPECIAL ODE	SHAFT MATERIAL	FRAME MATERIAL		
DE ODE	POLYREX EM	SGL SPL EXT	SPECIAL	NONE	1144 STRESSPROOF (C-223)	ROLLED STEEL		
BALL BALL	6205	6203						
THERMOSTATS	PROTECTORS	WDG RTD's	BRG RTD's	THERMISTORS	CONTROL	SPACE HEATERS		
TSTATS (N/C)	NOT	NONE	NONE	NONE	FALSE	NA		
R1 (ohms/ph)	R2 (ohms/ph)	X1 (ohms/ph)	X2 (ohms/ph)	Xm (ohms/ph)	VIBRATION (in/sec)	FLOAT ODE		
0	0	0	0	0	0.080			

* NOT TESTED		INVERTER TORQUE: CONSTANT 10:1	
		INV. HP SPEED RANGE: 1.1 X BASE SPEED	
		ENCODER: NONE	
		BRAKE: NONE	
		FT-LB: NONE	
		VOLTAGE: NA	
		UL: Y-(LEESON UL REC)	
		NONE PPR	

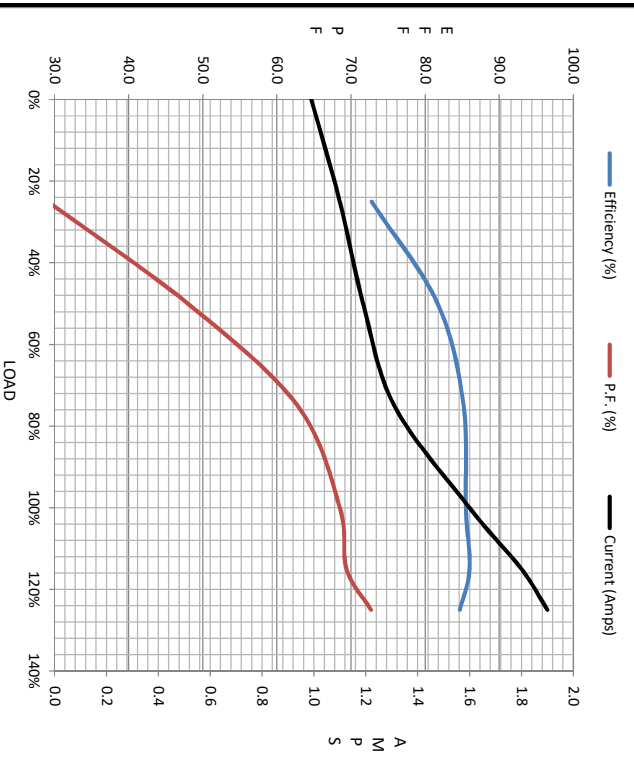
DATE:	1/29/2018	Hz:	
-------	-----------	-----	--



Motor Load Data						Data @ 460 V		
Load	0%	25%	50%	75%	100%	115%	125%	LR
Current (Amps)	0.99	1.10	1.19	1.31	1.60	1.80	1.90	14.5
Torque (ft-lb)	0.00	0.73	1.47	2.22	2.98	3.4	3.8	12.0
RPM	1800	1791	1780	1770	1760	1754	1749	0
Efficiency (%)		72.8	81.7	85.2	85.5	86.0	84.7	
P.F. (%)	8.2	29.1	48.0	62.8	68.5	69.4	72.7	0.0

Motor Speed Data

	LR	Pull-Up	BD	Rated	Idle	Information Block				
Speed (RPM)	0	900	1575	1760	1800	HP	1.0	1800	140	1800
Current (Amps)	14.5	13.0	9.9	1.60	0.99	Sync. RPM	1400	DP	TDR	230/460#190/380
Torque (ft-lb)	12.0	11.0	15.0	2.98	0.00	Construction	60	Hz	A	Design
						Voltage	230/460#190/380	V	N	LR Code letter
						Frequency	60	Hz	1.15	Service Factor
						Temp Rise @ FL	21	°C	CONT	Duty
						Ambient	40	°C	1,000	Elevation
						Rotor/Shaft wk²	0.12	lb-Ft²	0	Sound Pressure @ 1M
						Ref Wdg	T634342 DR	dB(A)	CONSTANT 10:1	VFD Rating
									607-0197-700	Outline Dwg
									005010.20	Conn. Diag
										Additional Specifications:
										0
										EQUIV CKT (OHMS / PHASE)
										R1
										R2
										X1
										X2
										Xm



	R1	R2	X1	X2	Xm
	0.0000	0.0000	0.0000	0.0000	0.0000

