

PRODUCT INFORMATION PACKET



Model No: C6K17DK45A

Catalog No: E113930.00

E113930.00..1HP..1725RPM.56C.DP.115/230V.1PH.60HZ.CONT.40C.1.15SF.RIGID C
FACE.C6K17DK45.....GENERAL PURPOSE.NONE.....

Open Drip Proof (ODP)



Regal and Leeson are trademarks of Regal Beloit Corporation or one of its affiliated companies.

©2018 Regal Beloit Corporation, All Rights Reserved. MC017097E



Product Information Packet: Model No: C6K17DK45A, Catalog No:E113930.00
 E113930.00..1HP..1725RPM.56C.DP.115/230V.1PH.60HZ.CONT.40C.1.15SF.RIGID C
 FACE.C6K17DK45.....GENERAL PURPOSE.NONE.....



Nameplate Specifications

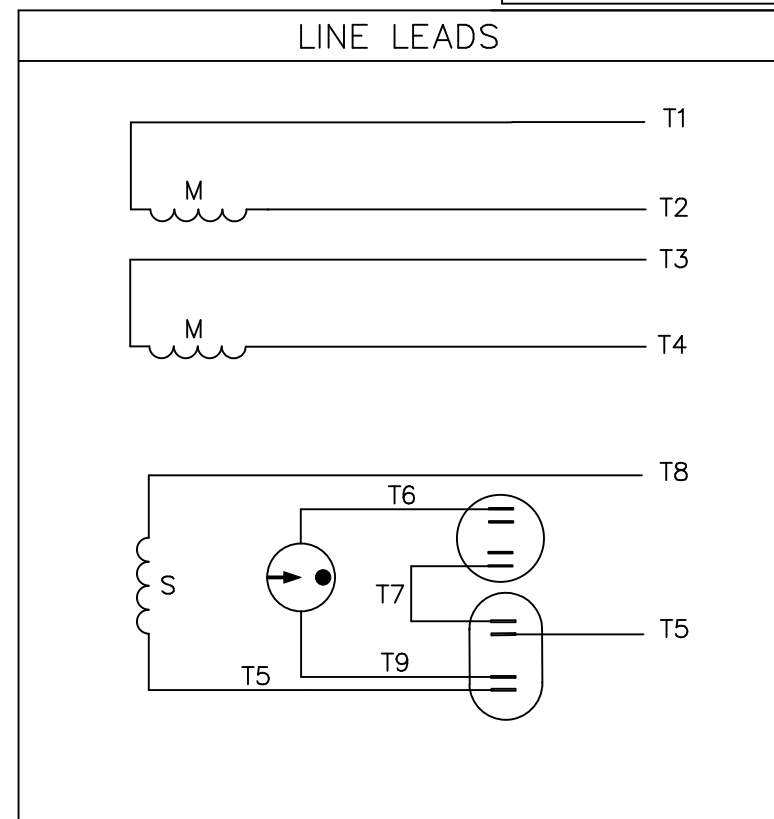
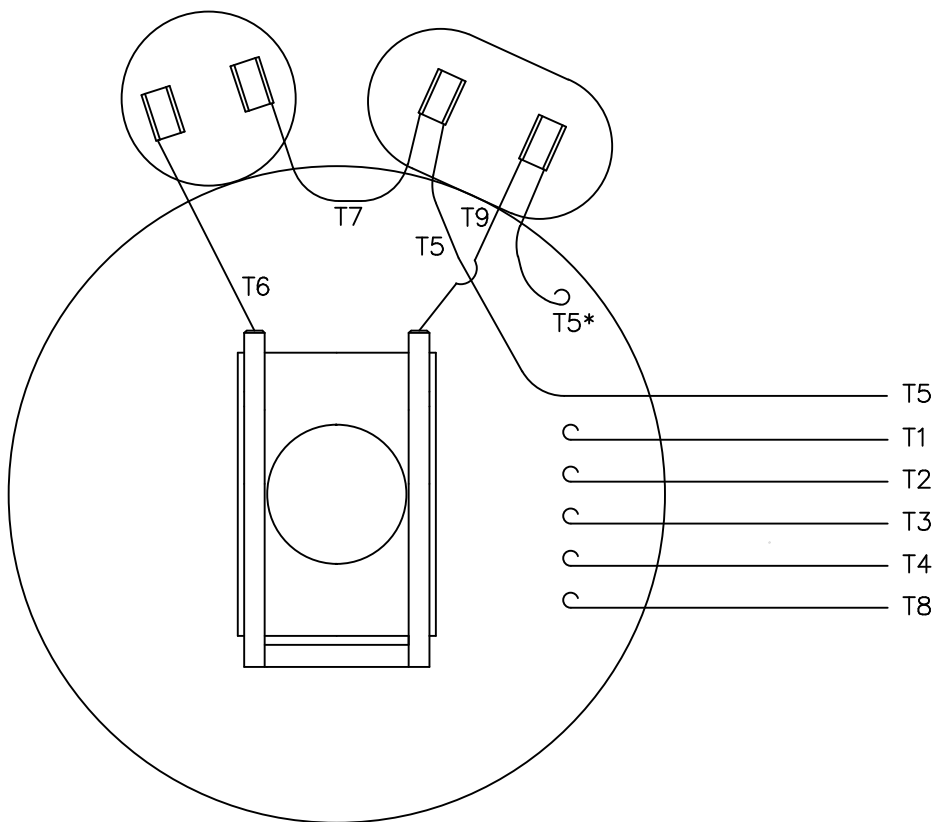
Output HP	1 Hp	Output KW	0.75 kW
Frequency	60 Hz	Voltage	115/230 V
Current	8.4/4.2 A	Speed	1725 rpm
Service Factor	1.15	Phase	1
Efficiency	82.6 %	Duty	Continuous
Insulation Class	F	Design Code	L
KVA Code	J	Frame	56C
Enclosure	Drip Proof	Overload Protector	No
Ambient Temperature	40 °C	Drive End Bearing Size	6203
Opp Drive End Bearing Size	6203	UL	Recognized
CSA	Y	CE	Y
IP Code	22		

Technical Specifications

Electrical Type	Capacitor Start Capacitor Run	Starting Method	Across The Line
Poles	4	Rotation	Selective Counterclockwise
Mounting	Rigid base	Motor Orientation	HORIZONTAL
Drive End Bearing	BALL	Opp Drive End Bearing	BALL
Frame Material	Rolled Steel	Shaft Type	NEMA 56
Overall Length	11.87 in	Frame Length	7.00 in
Shaft Diameter	0.625 in	Shaft Extension	1.88 in
Assembly/Box Mounting	F1 ONLY		
Outline Drawing	607-0202-700B	Connection Diagram	005054.01


This is an uncontrolled document once printed or downloaded and is subject to change without notice. Date Created: 10/15/2018

VIEW FROM OUTSIDE OF MOTOR AT SWITCH END.



	ROTATION FACING LEAD END	L1	L2	JOIN
HIGH VOLT	C.C.W.	T1	T4 T5	T2,T3 T8
	C.W.	T1	T4 T8	T2,T3 T5
LOW VOLT	C.C.W.	T1 T3,T8	T2,T4 T5	
	C.W.	T1,T3 T5	T2,T4 T8	

* THIS LEAD MAY BE WHITE

				TOLERANCES UNLESS SPECIFIED		 ELECTRIC MOTORS GEARMOTORS AND DRIVES	DRAWN JRW 09/27/74			
				DEC.	INCHES		CHK TEM			
				.X	±.1		APPD	10/11/74		
11	ALTERNATE T5 LEAD MARKING WAS RED	RLW	8/6/02	.XX	±.01	TITLE EXT. WIRING DIAGRAM TYPE "K" W/O PROTECTOR MAT'L. DECAL-004012 FINISH	SCALE	1=1		
10	ADDED ALTERNATE T5 LEAD MARKING	RLW	6/5/02	KH	.XXX ±.005		REF	A-005053		
09	REDRAWN TO CAD	DBT	05/28/97		.XXXX ±.0005		FMF	W-K6343		
NO.	REVISION	BY & DATE	CHK	ANG	±1/2"		PREV			
THIS DRAWING IN DESIGN AND DETAIL IS OUR PROPERTY AND MUST NOT BE USED EXCEPT IN CONNECTION WITH OUR WORK ALL RIGHTS OF DESIGN AND INVENTION ARE RESERVED THIS IS AN ELECTRONICALLY GENERATED DOCUMENT - DO NOT SCALE THIS PRINT				RFP		CAD FILE	00505401	SIZE	DRAWING NO.	REV.
				DIST	BRF-NLV		A	005054-01	11	



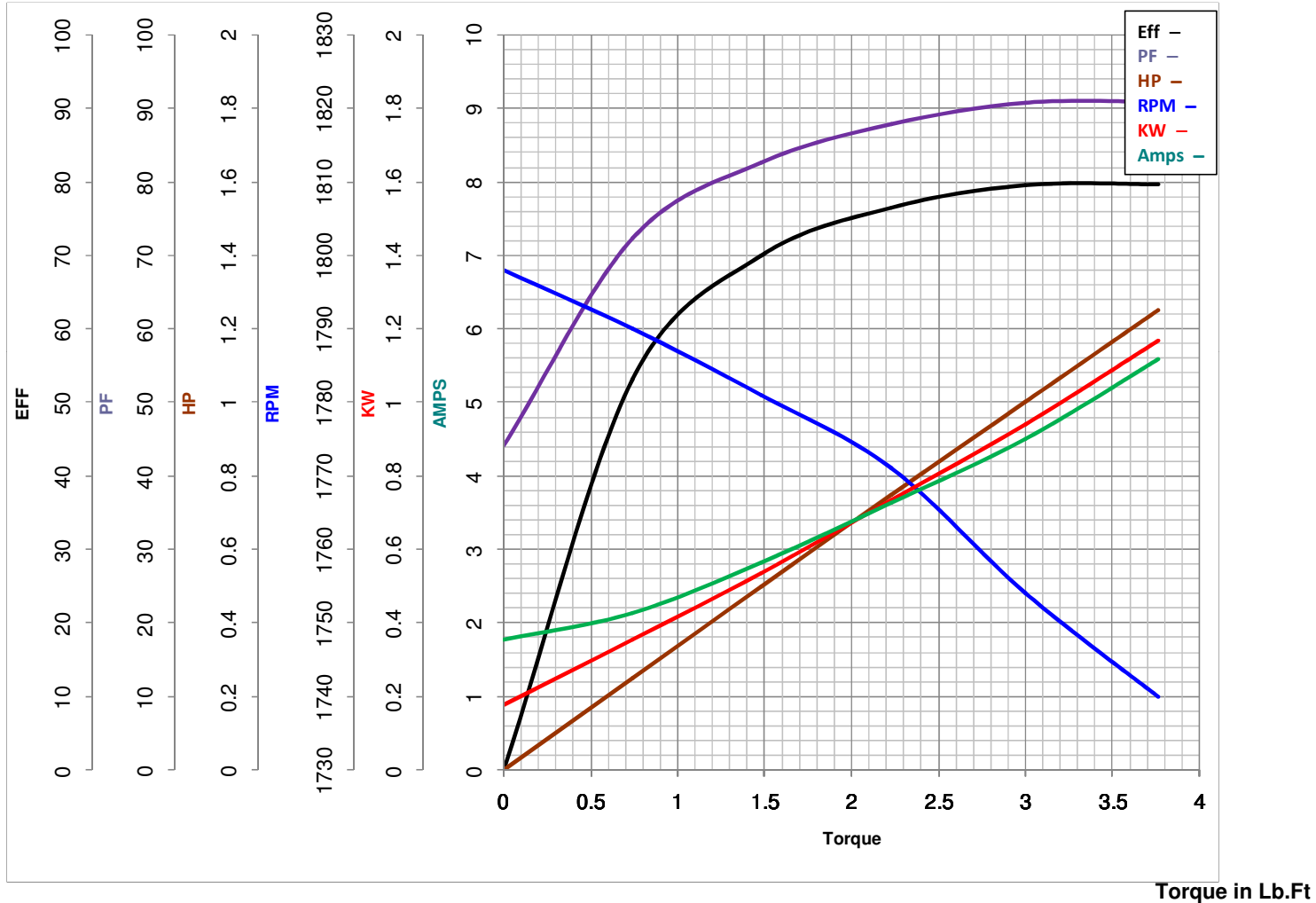
LEESON ELECTRIC CORPORATION
 TYPICAL PERFORMANCE CURVE for AC MOTOR

Model No E113930.00

Curve at 230 Volts HP 1.00 PHASE 1
60 HZ
1 HP VOLTS 115/230

Catalog No E113930.00

HZ 60 RPM 1725



FL TORQUE	<u>3</u>	Lb.Ft	FL AMPS	<u>8.4/4.2</u>
BD TORQUE	<u>7.8</u>	Lb.Ft	PU TORQUE	<u>6.7</u> Lb.Ft
LR TORQUE	<u>9.36</u>	Lb.Ft	LR AMPS	<u>33.4</u>
WINDING	<u>K634338-3</u>		Date	<u>3/27/2018</u>