

# PRODUCT INFORMATION PACKET



Model No: C6T11DB22A

Catalog No: E110027.00

..1/2HP..1140RPM.56.DP.230/460V.3PH.60HZ.CONT.40C.1.15SF.RIGID.C6T11DB22.....GENERAL PURPOSE.T-STAT.....

Open Drip Proof (ODP)



Regal and Leeson are trademarks of Regal Beloit Corporation or one of its affiliated companies.

©2018 Regal Beloit Corporation, All Rights Reserved. MC017097E





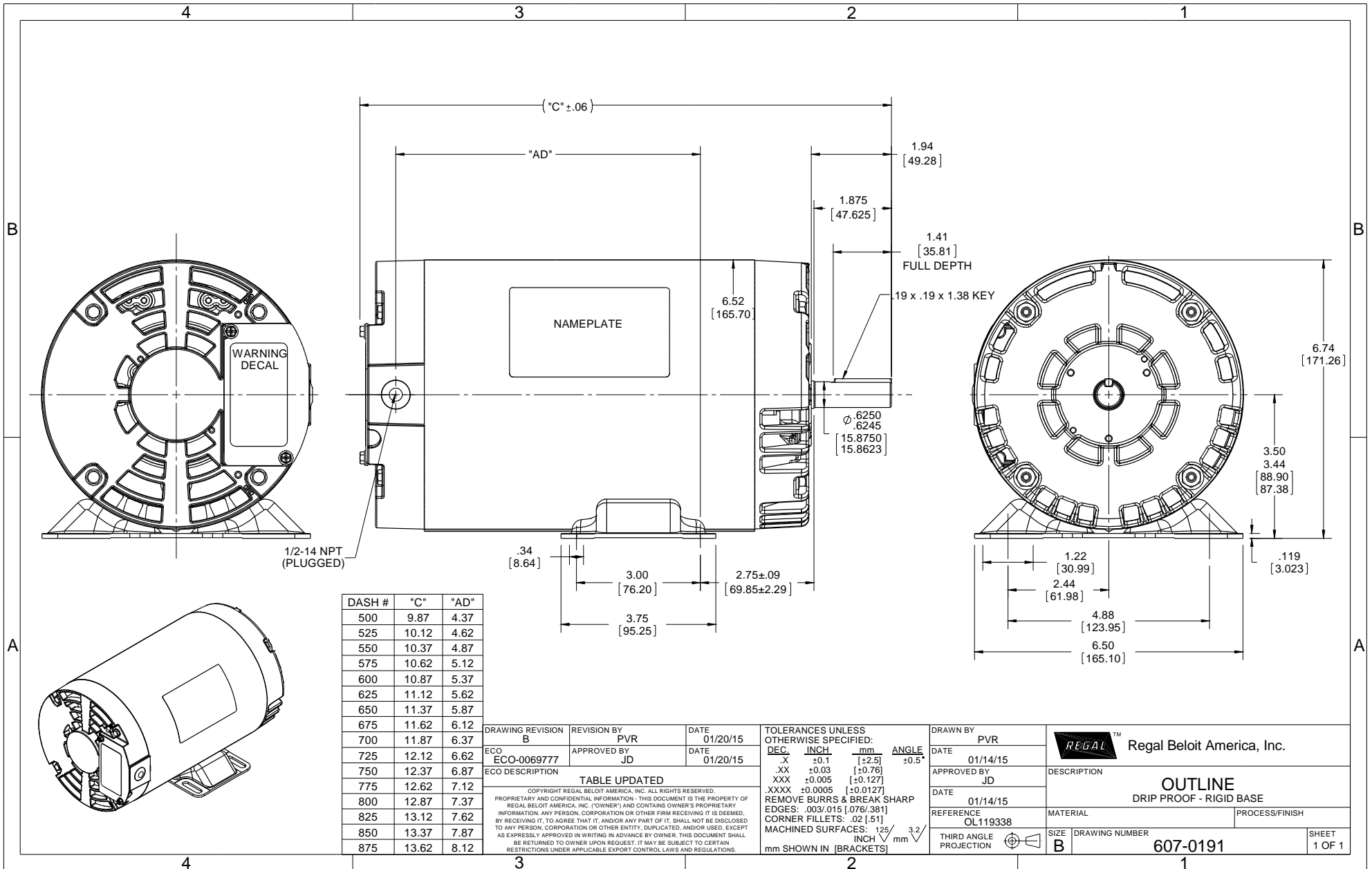
### Nameplate Specifications

Output HP	0.50 Hp	Output KW	0.37 kW
Frequency	60 Hz	Voltage	230/460 V
Current	2.2/1.1 A	Speed	1140 rpm
Service Factor	1.15	Phase	3
Efficiency	75.3 %	Duty	Continuous
Insulation Class	F	Design Code	B
KVA Code	K	Frame	56
Enclosure	Drip Proof	Overload Protector	No
Ambient Temperature	40 °C	Drive End Bearing Size	6203
Opp Drive End Bearing Size	6203	UL	Recognized
CSA	Y	CE	Y
IP Code	22		

### Technical Specifications

Electrical Type	Squirrel Cage Inverter Rated	Starting Method	Line Or Inverter
Poles	6	Rotation	Reversible
Mounting	Rigid base	Motor Orientation	HORIZONTAL
Drive End Bearing	BALL	Opp Drive End Bearing	BALL
Frame Material	Rolled Steel	Shaft Type	NEMA 56
Overall Length	10.87 in	Frame Length	6.00 in
Shaft Diameter	0.625 in	Shaft Extension	1.88 in
Assembly/Box Mounting	F1 ONLY		
Outline Drawing	607-0191-600	Connection Diagram	005010.20

This is an uncontrolled document once printed or downloaded and is subject to change without notice. Date Created: 10/15/2018



DASH #	"C"	"AD"
500	9.87	4.37
525	10.12	4.62
550	10.37	4.87
575	10.62	5.12
600	10.87	5.37
625	11.12	5.62
650	11.37	5.87
675	11.62	6.12
700	11.87	6.37
725	12.12	6.62
750	12.37	6.87
775	12.62	7.12
800	12.87	7.37
825	13.12	7.62
850	13.37	7.87
875	13.62	8.12

DRAWING REVISION	REVISION BY	DATE
B	PVR	01/20/15
ECO-0069777	JD	01/20/15

TABLE UPDATED

COPYRIGHT REGAL BELOIT AMERICA, INC. ALL RIGHTS RESERVED. PROPRIETARY AND CONFIDENTIAL INFORMATION - THIS DOCUMENT IS THE PROPERTY OF REGAL BELOIT AMERICA, INC. ("OWNER") AND CONTAINS OWNER'S PROPRIETARY INFORMATION. ANY PERSON, CORPORATION OR OTHER FIRM RECEIVING IT IS DEEMED, BY RECEIVING IT, TO AGREE THAT IT, AND/OR ANY PART OF IT, SHALL NOT BE DISCLOSED TO ANY PERSON, CORPORATION OR OTHER ENTITY, DUPLICATED, AND/OR USED, EXCEPT AS EXPRESSLY APPROVED IN WRITING IN ADVANCE BY OWNER. THIS DOCUMENT SHALL BE RETURNED TO OWNER UPON REQUEST. IT MAY BE SUBJECT TO CERTAIN RESTRICTIONS UNDER APPLICABLE EXPORT CONTROL LAWS AND REGULATIONS.

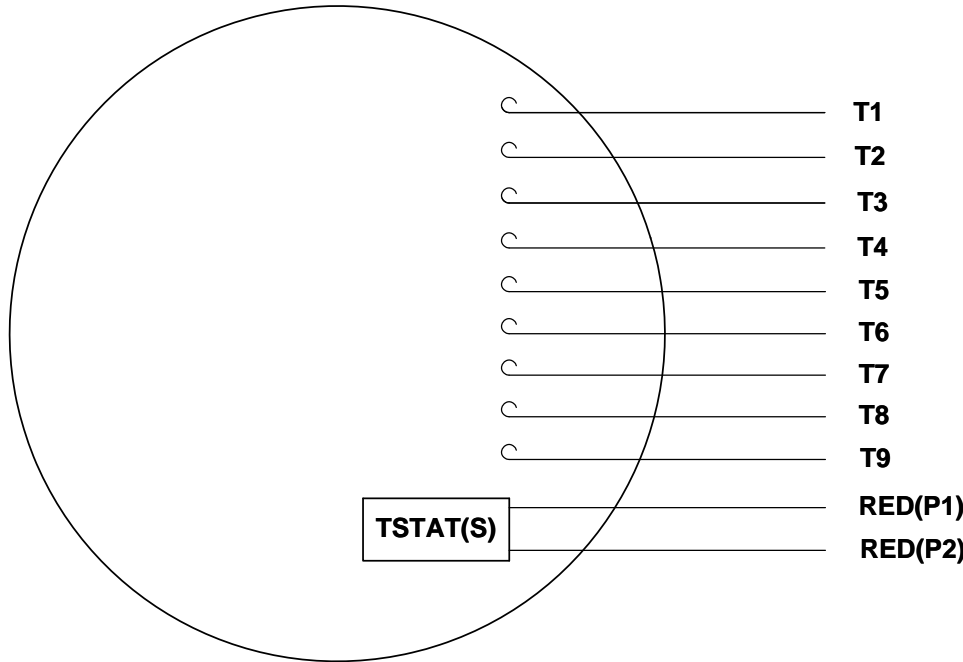
TOLERANCES UNLESS OTHERWISE SPECIFIED:

DEC	INCH	mm	ANGLE
.X	±0.1	[±2.5]	±0.5°
.XX	±0.03	[±0.76]	
.XXX	±0.005	[±0.127]	
.XXXX	±0.0005	[±0.0127]	

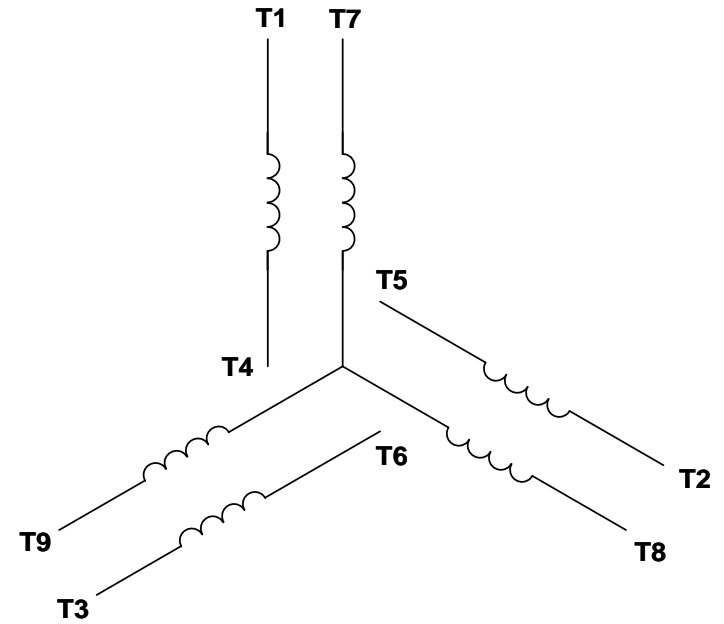
REMOVE BURRS & BREAK SHARP EDGES: .003/.015 [076/381]  
 CORNER FILLETS: .02 [51]  
 MACHINED SURFACES: 125/3.2 INCH/mm

DRAWN BY PVR	DATE 01/14/15	Regal Beloit America, Inc.
APPROVED BY JD	DATE 01/14/15	
REFERENCE OL119338	THIRD ANGLE PROJECTION	DESCRIPTION <b>OUTLINE</b> DRIP PROOF - RIGID BASE
SIZE B	DRAWING NUMBER 607-0191	PROCESS/FINISH
		SHEET 1 OF 1

VIEW FROM OUTSIDE OF MOTOR AT SWITCH END. Uncontrolled Copy



**LINE LEADS**



VOLTAGE	L1	L2	L3	JOIN & INSULATE
HIGH	T1	T2	T3	(T4,T7) (T5,T8) (T6,T9)
LOW	T1,T7	T2,T8	T3,T9	T4,T5,T6

DRAWING REVISION **G** REVISION BY **MVG** DATE **04/05/2017**

ECO **ECO-0121253** APPROVED BY **SM** DATE **04/05/2017**

ECO DESCRIPTION  
**ADDED P1 & P2 FOR TSTAT**

COPYRIGHT REGAL BELOIT AMERICA, INC. ALL RIGHTS RESERVED.  
PROPRIETARY AND CONFIDENTIAL INFORMATION - THIS DOCUMENT IS THE PROPERTY OF  
REGAL BELOIT AMERICA, INC. ("OWNER") AND CONTAINS OWNER'S PROPRIETARY  
INFORMATION. ANY PERSON, CORPORATION OR OTHER FIRM RECEIVING IT IS DEEMED,  
BY RECEIVING IT, TO AGREE THAT IT, AND/OR ANY PART OF IT, SHALL NOT BE DISCLOSED  
TO ANY PERSON, CORPORATION OR OTHER ENTITY, DUPLICATED, AND/OR USED, EXCEPT  
AS EXPRESSLY APPROVED IN WRITING IN ADVANCE BY OWNER. THIS DOCUMENT SHALL  
BE RETURNED TO OWNER UPON REQUEST. IT MAY BE SUBJECT TO CERTAIN  
RESTRICTIONS UNDER APPLICABLE EXPORT CONTROL LAWS AND REGULATIONS.

TOLERANCES UNLESS OTHERWISE SPECIFIED:

DEC.	INCH	mm	ANGLE
.X	±0.1	[±2.5]	±0.5°
.XX	±0.01	[±0.25]	
.XXX	±0.005	[±0.127]	
.XXXX	±0.0005	[±0.0127]	

**REMOVE BURRS & BREAK SHARP EDGES: .003/.015 [.076/.381] X 45°**  
**CORNER FILLETS: R.02 [.51]**  
**MACHINED SURFACES: 125/3.2 INCH/mm**  
**mm SHOWN IN [BRACKETS]**

DRAWN BY **DBT 12/16/97**

DATE

APPROVED BY **KH 12/17/97**

DATE

REFERENCE

THIRD ANGLE PROJECTION

**REGAL**™ Regal Beloit America, Inc.

DESCRIPTION  
**CONN DIAGRAM-EXTERNAL**  
**3 PHASE WITH PROTECTOR**

MATERIAL **DECAL - 004014 (TSTAT) - 080582** PROCESS/FINISH **STOCK**

SIZE **A** DRAWING NUMBER **00501020** SHEET **1 OF 1**



P.O. BOX 8003  
WAUSAU, WI 54401-8003  
PH. 715-675-3311

DATA VOLTS: 460

CERTIFICATION DATA SHEET

CONN. DIAGRAM: 005010.20  
OUTLINE: 607-0191-600  
WINDING: T636113

CAT #: E110027.00

DR 3

TYPICAL MOTOR PERFORMANCE DATA

HP	KW	SYNC RPM	FL RPM	FRAME	ENCLOSURE	TYPE	KVA CODE	DESIGN								
0.5	0.37	1440	1153	56	DP	NA	J	B								
PH	HZ	VOLTS	AMPS	START TYPE	DUTY	INSL	S.F.	AMB	ELEV.							
3	60/50	230/460#190/380	2.15/1.05&2.3/1.15	LINE OR INVERTER	CONT	F	1.15	40	3300							
F.L. EFF	F.L. PF	76.1	57.9	3/4 LD EFF	3/4 LD PF	74.9	48.5	1/2 LD EFF	1/2 LD PF	70.1	37.7	0.0	ELECT. TYPE	SO CAGE INVERTED		
F.L. TORQUE	LR AMPS @ 460 V	5.0	1,399	LB-FT	L.R. TORQUE	238%	1,879	LB-FT	B.D. TORQUE	320%	29	F.L. RISE (°C)				
PRESSURE @ 3	0 DBA	9 DBA	POWER	ROTOR WK²	0.00	LB-FT²	0	LB-FT²	SAFE STALL TIME	0	SEC.	STARTS/HOUR	0	MOTOR WGT	0	LB.

\*\*\* SUPPLEMENTAL INFORMATION \*\*\*

DE BRACKET TYPE	ODE BRACKET TYPE	MOUNT TYPE	MOTOR ORIENTATION	SEVERE DUTY	HAZARDOUS LOCATION	DRIP COVER	SCREENS	PAINT
STANDARD	STANDARD	RIGID	HORIZONTAL	NO	NONE	NO	NONE	N - LEESON WATTS
BEARINGS DE ODE	GREASE	SHAFT TYPE	SPECIAL DE	SPECIAL ODE	SHAFT MATERIAL	FRAME MATERIAL		
BALL BALL 6203	POLYREX EM 6203	STANDARD 56	NONE	NONE	1144 STRESSPROOF (C-223)	ROLLED STEEL		
THERMOSTATS TSTATS (N/C)	PROTECTORS	WDG RTD's	BRG RTD's	THERMISTORS	CONTROL	SPACE HEATERS		
	NOT	NONE	NONE	NONE	FALSE	NA		
R1 (ohms/ph)	R2 (ohms/ph)	X1 (ohms/ph)	X2 (ohms/ph)	Xm (ohms/ph)	VIBRATION (in/sec)	FLOAT ODE		
0	0	0	0	0	0.080			

* NOT TESTED * INVERTER TORQUE: CONSTANT 10:1 INV. HP SPEED RANGE: 1.1 X BASE SPEED	
ENCODER:	NONE
BRAKE:	NONE
FT-LB:	NA
VOLTAGE:	NONE
UL:	Y-(LEESON UL REC)

DATE:	1/29/2018	HZ:	
-------	-----------	-----	--



Motor Load Data

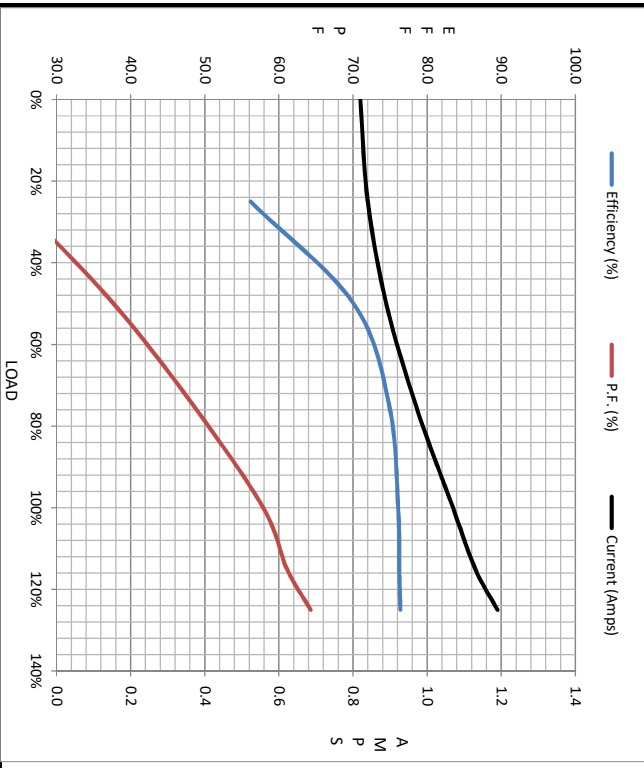
Load	0%	25%	50%	75%	100%	115%	125%	LR
Current (Amps)	0.82	0.84	0.89	0.97	1.07	1.13	1.19	5.0
Torque (ft-lb)	0.00	142	288	436	588	10,669	740	1,399
RPM	1440	1189	1178	1167	1153	1,147	1,139	0
Efficiency (%)		56.2	70.1	74.9	76.1	76.3	76.4	
P.F. (%)	11.8	24.7	37.7	48.5	57.9	61.1	64.3	0.0

Motor Speed Data

	LR	Pull-Up	BD	Rated	Idle
Speed (RPM)	0	106	807	1153	1440
Current (Amps)	5.0	5.0	3.6	1.07	0.82
Torque (ft-lb)	1,399	1,455	1,879	588	0.00

Information Block

HP	0.5
Sync. RPM	1440
Frame	56
Enclosure	DP
Construction	NA
Voltage	230/460#190/380 V
Frequency	60 Hz
Design	B
LR Code letter	J
Service Factor	1.15
Temp Rise @ FL	29 °C
Duty	CONT
Ambient	40 °C
Elevation	1,000 feet
Rotor/Shaft wk <sup>2</sup>	0.00 LB-Ft <sup>2</sup>
Ref Wdg	T636113 DR
Sound Pressure @ 1M	0 dBA
VFD Rating	CONSTANT 10:1
Outline Dwg	607-0191-600
Conn. Diag	005010.20
Additional Specifications:	
0	
EQUIV CKT (OHMS / PHASE)	
R1	R2
0.0000	0.0000
X1	X2
0.0000	0.0000
Xm	
0.0000	



Speed -Torque Curve

