

# PRODUCT INFORMATION PACKET



Model No: C6K17DB52A

Catalog No: E110004.00

..1HP..1800RPM.56.DP.115/230V.1PH.60HZ.CONT.40C.1.15SF.RIGID BASE.C6K17DB52.....GENERAL PURPOSE.NONE.....

Open Drip Proof (ODP)



Regal and Leeson are trademarks of Regal Beloit Corporation or one of its affiliated companies.

©2018 Regal Beloit Corporation, All Rights Reserved. MC017097E



**Product Information Packet: Model No: C6K17DB52A, Catalog No:E110004.00  
 ..1HP..1800RPM.56.DP.115/230V.1PH.60HZ.CONT.40C.1.15SF.RIGID BASE.C6K17DB52.....GENERAL  
 PURPOSE.NONE.....**



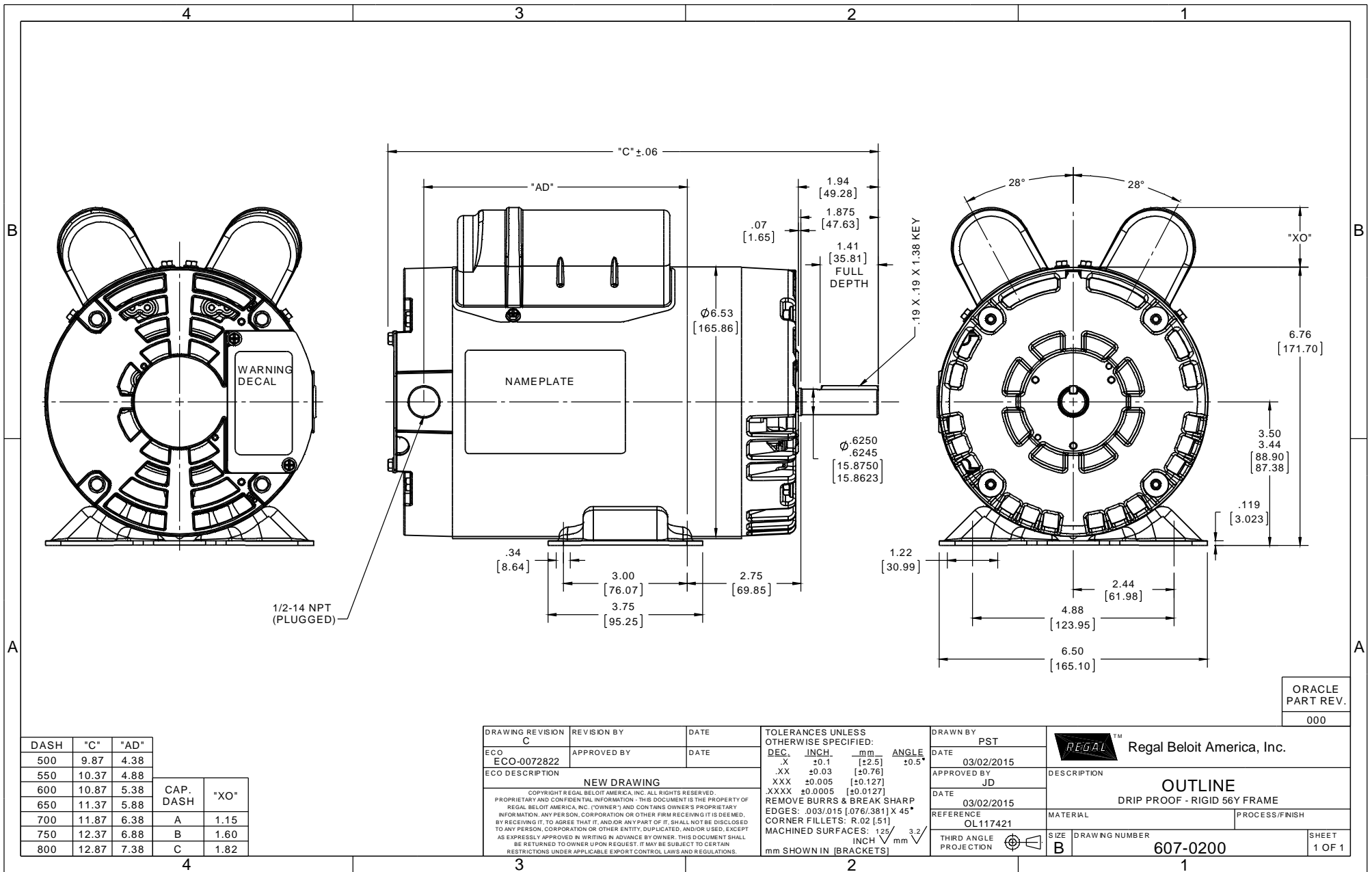
### Nameplate Specifications

|                            |                   |                        |                   |
|----------------------------|-------------------|------------------------|-------------------|
| Output HP                  | <b>1 Hp</b>       | Output KW              | <b>0.75 kW</b>    |
| Frequency                  | <b>60 Hz</b>      | Voltage                | <b>115/230 V</b>  |
| Current                    | <b>8.4/4.2 A</b>  | Speed                  | <b>1725 rpm</b>   |
| Service Factor             | <b>1.15</b>       | Phase                  | <b>1</b>          |
| Efficiency                 | <b>82.6 %</b>     | Duty                   | <b>Continuous</b> |
| Insulation Class           | <b>F</b>          | Design Code            | <b>L</b>          |
| KVA Code                   | <b>J</b>          | Frame                  | <b>56</b>         |
| Enclosure                  | <b>Drip Proof</b> | Overload Protector     | <b>No</b>         |
| Ambient Temperature        | <b>40 °C</b>      | Drive End Bearing Size | <b>6203</b>       |
| Opp Drive End Bearing Size | <b>6203</b>       | UL                     | <b>Recognized</b> |
| CSA                        | <b>Y</b>          | CE                     | <b>Y</b>          |
| IP Code                    | <b>22</b>         |                        |                   |

### Technical Specifications

|                       |                                      |                       |                                   |
|-----------------------|--------------------------------------|-----------------------|-----------------------------------|
| Electrical Type       | <b>Capacitor Start Capacitor Run</b> | Starting Method       | <b>Across The Line</b>            |
| Poles                 | <b>4</b>                             | Rotation              | <b>Selective Counterclockwise</b> |
| Mounting              | <b>Rigid base</b>                    | Motor Orientation     | <b>HORIZONTAL</b>                 |
| Drive End Bearing     | <b>BALL</b>                          | Opp Drive End Bearing | <b>BALL</b>                       |
| Frame Material        | <b>Rolled Steel</b>                  | Shaft Type            | <b>NEMA 56</b>                    |
| Overall Length        | <b>11.87 in</b>                      | Frame Length          | <b>7.00 in</b>                    |
| Shaft Diameter        | <b>0.625 in</b>                      | Shaft Extension       | <b>1.88 in</b>                    |
| Assembly/Box Mounting | <b>F1 ONLY</b>                       |                       |                                   |
| Outline Drawing       | <b>607-0200-700B</b>                 | Connection Diagram    | <b>005054.01</b>                  |

**This is an uncontrolled document once printed or downloaded and is subject to change without notice. Date Created: 10/15/2018**



ORACLE  
PART REV.  
000

| DASH | "C"   | "AD" |
|------|-------|------|
| 500  | 9.87  | 4.38 |
| 550  | 10.37 | 4.88 |
| 600  | 10.87 | 5.38 |
| 650  | 11.37 | 5.88 |
| 700  | 11.87 | 6.38 |
| 750  | 12.37 | 6.88 |
| 800  | 12.87 | 7.38 |

| CAP. DASH | "XO" |
|-----------|------|
| A         | 1.15 |
| B         | 1.60 |
| C         | 1.82 |

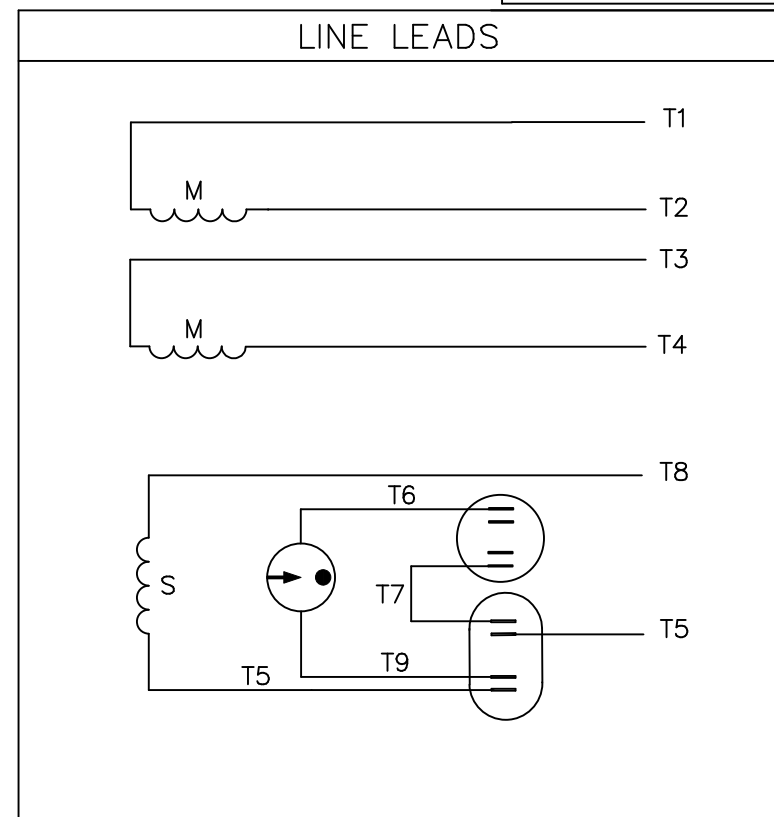
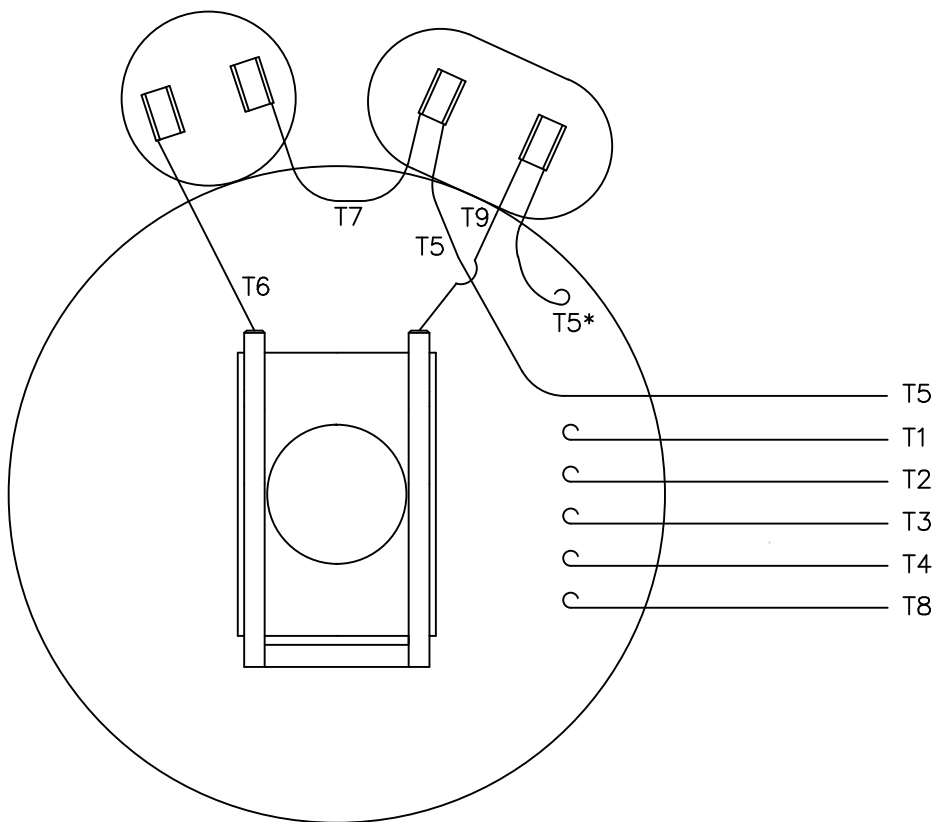
| DRAWING REVISION   | REVISION BY | DATE |
|--|-------------|------|
| C  |             |      |
| ECCO   | APPROVED BY | DATE |
| ECCO-0072822   |             |      |
| ECCO DESCRIPTION   |             |      |
| NEW DRAWING  |             |      |
| <small>COPYRIGHT REGAL BELOIT AMERICA, INC. ALL RIGHTS RESERVED. PROPRIETARY AND CONFIDENTIAL INFORMATION. THIS DOCUMENT IS THE PROPERTY OF REGAL BELOIT AMERICA, INC. (OWNER) AND CONTAINS OWNER'S PROPRIETARY INFORMATION. ANY PERSON, CORPORATION OR OTHER FIRM RECEIVING IT IS DEEMED, BY RECEIVING IT, TO AGREE THAT IT, AND/OR ANY PART OF IT, SHALL NOT BE DISCLOSED TO ANY PERSON, CORPORATION OR OTHER ENTITY, DUPLICATED, AND/OR USED, EXCEPT AS EXPRESSLY APPROVED IN WRITING IN ADVANCE BY OWNER. THIS DOCUMENT SHALL BE RETURNED TO OWNER UPON REQUEST. IT MAY BE SUBJECT TO CERTAIN RESTRICTIONS UNDER APPLICABLE EXPORT CONTROL LAWS AND REGULATIONS.</small> |             |      |

| TOLERANCES UNLESS OTHERWISE SPECIFIED:                             |         |           |       |
|--|---------|-----------|-------|
| DEC.   | INCH.   | mm        | ANGLE |
| .X   | ±0.1    | [±2.5]    | ±0.5° |
| .XX  | ±0.03   | [±0.76]   |       |
| .XXX   | ±0.005  | [±0.127]  |       |
| .XXXX  | ±0.0005 | [±0.0127] |       |
| REMOVE BURRS & BREAK SHARP EDGES: .003/.015 [0.076/.381] X 45°     |         |           |       |
| CORNER FILLETS: R.02 [51]  |         |           |       |
| MACHINED SURFACES: 125 $\sqrt{\text{mm}}$ 3.2 $\sqrt{\text{INCH}}$ |         |           |       |
| mm SHOWN IN [BRACKETS]   |         |           |       |

| DRAWN BY               | DATE       |
|------------------------|------------|
| PST                    | 03/02/2015 |
| APPROVED BY            | DATE       |
| JD                     | 03/02/2015 |
| REFERENCE              | MATERIAL   |
| OL117421               |            |
| THIRD ANGLE PROJECTION | SIZE       |
| $\oplus$               | B          |

| REGAL™ Regal Beloit America, Inc.    |                |
|--------------------------------------|----------------|
| DESCRIPTION                          |                |
| OUTLINE DRIP PROOF - RIGID 56Y FRAME |                |
| PROCESS/FINISH                       | DRAWING NUMBER |
|                                      | 607-0200       |
| SIZE                                 | SHEET          |
| B                                    | 1 OF 1         |

VIEW FROM OUTSIDE OF MOTOR AT SWITCH END.



|              | ROTATION<br>FACING<br>LEAD END | L1          | L2          | JOIN        |
|--------------|--------------------------------|-------------|-------------|-------------|
| HIGH<br>VOLT | C.C.W.                         | T1          | T4<br>T5    | T2,T3<br>T8 |
|              | C.W.                           | T1          | T4<br>T8    | T2,T3<br>T5 |
| LOW<br>VOLT  | C.C.W.                         | T1<br>T3,T8 | T2,T4<br>T5 |             |
|              | C.W.                           | T1,T3<br>T5 | T2,T4<br>T8 |             |

\* THIS LEAD MAY BE WHITE

|  |                                   | TOLERANCES<br>UNLESS SPECIFIED |          | LEESON ELECTRIC MOTORS<br>GEARMOTORS<br>AND DRIVES |              | DRAWN JRW 09/27/74                            |              |             |      |
|--|-----------------------------------|--------------------------------|----------|--|--------------|---|--------------|-------------|------|
|  |                                   | DEC.                           | INCHES   |  |              | CHK   | TEM          |             |      |
|  |                                   | .X                             | ±.1      |  |              | APPD  | 10/11/74     |             |      |
| 11   | ALTERNATE T5 LEAD MARKING WAS RED | RLW                            | 8/6/02   | .XX  | ±.01         | TITLE   | SCALE 1=1    |             |      |
| 10   | ADDED ALTERNATE T5 LEAD MARKING   | RLW                            | 6/5/02   | KH   | .XXX ±.005   | EXT. WIRING DIAGRAM<br>TYPE "K" W/O PROTECTOR | REF A-005053 |             |      |
| 09   | REDRAWN TO CAD                    | DBT                            | 05/28/97 |  | .XXXX ±.0005 | MAT'L. DECAL-004012                           | FMF W-K6343  |             |      |
| NO.  | REVISION                          | BY & DATE                      | CHK      | ANG  | ±1/2"        | FINISH  | PREV         |             |      |
| THIS DRAWING IN DESIGN AND DETAIL IS OUR PROPERTY AND MUST NOT BE USED EXCEPT IN CONNECTION WITH OUR WORK ALL RIGHTS OF DESIGN AND INVENTION ARE RESERVED THIS IS AN ELECTRONICALLY GENERATED DOCUMENT - DO NOT SCALE THIS PRINT |                                   |                                |          | RFP  | CAD FILE     | 00505401                                      | SIZE         | DRAWING NO. | REV. |
|  |                                   |                                |          | DIST   | BRF-NLV      |   | A            | 005054-01   | 11   |

