

PRODUCT INFORMATION PACKET



Model No: A6K17DB56A

Catalog No: E110000.00

1HP..1725RPM.56.DP./V.1PH.60HZ.CONT.AUTOMATIC.40C.1.15SF.RIGID.GENERAL PURPOSE.

Open Drip Proof (ODP)



Regal and Leeson are trademarks of Regal Beloit Corporation or one of its affiliated companies.

©2018 Regal Beloit Corporation, All Rights Reserved. MC017097E





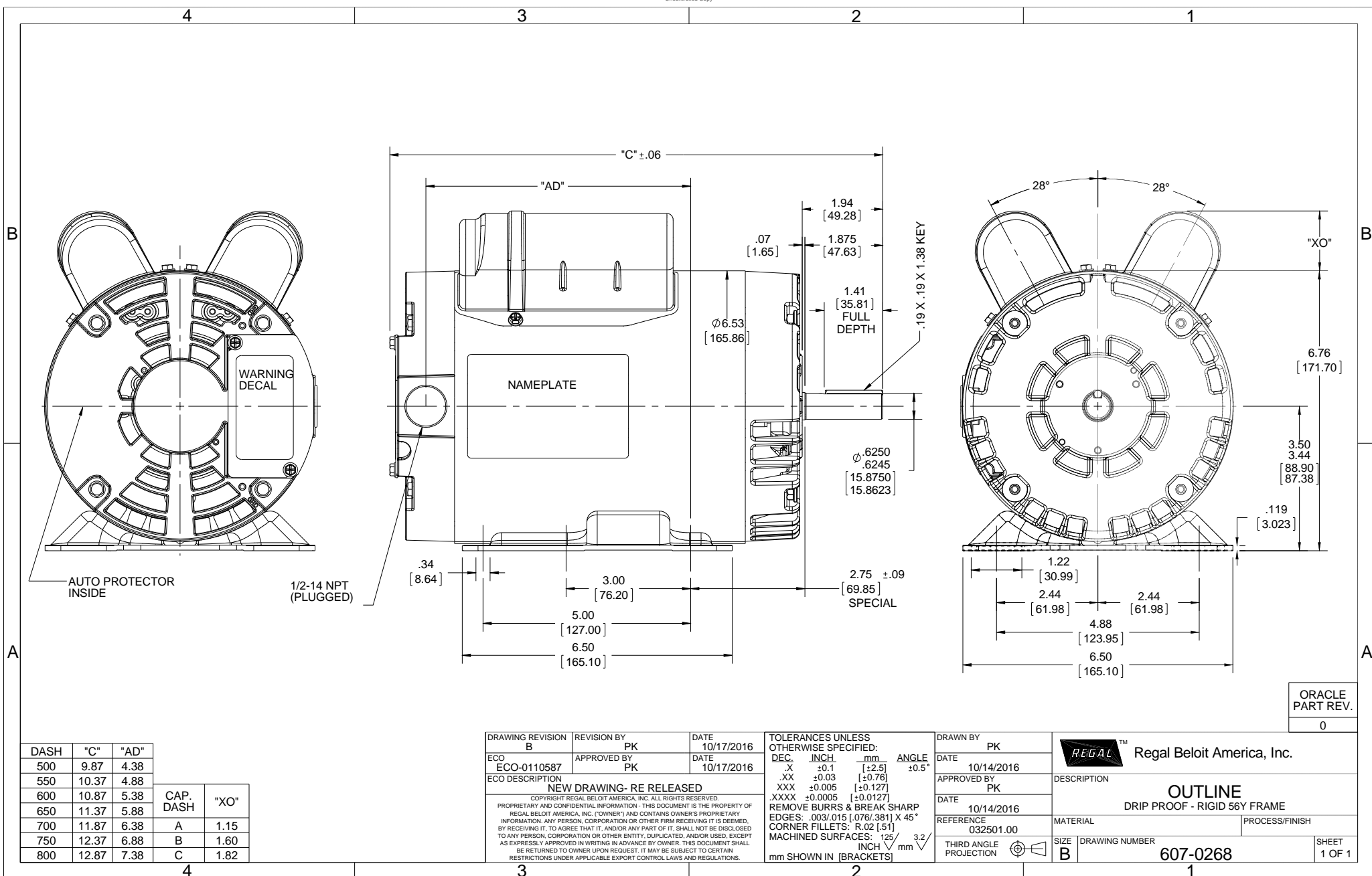
Nameplate Specifications

| | | | |
|----------------------------|------------|------------------------|------------|
| Output HP | 1 Hp | Output KW | 0.75 kW |
| Frequency | 60 Hz | Voltage | 115/230 V |
| Current | 8.4/4.2 A | Speed | 1725 rpm |
| Service Factor | 1.15 | Phase | 1 |
| Efficiency | 82.6 % | Duty | Continuous |
| Insulation Class | B | Design Code | L |
| KVA Code | J | Frame | 56 |
| Enclosure | Drip Proof | Overload Protector | Automatic |
| Ambient Temperature | 40 °C | Drive End Bearing Size | 6203 |
| Opp Drive End Bearing Size | 6203 | UL | Recognized |
| CSA | Y | CE | N |
| IP Code | 22 | | |

Technical Specifications

| | | | |
|-----------------------|-------------------------------|-----------------------|----------------------------|
| Electrical Type | Capacitor Start Capacitor Run | Starting Method | Across The Line |
| Poles | 4 | Rotation | Selective Counterclockwise |
| Mounting | Rigid base | Motor Orientation | HORIZONTAL |
| Drive End Bearing | BALL | Opp Drive End Bearing | BALL |
| Frame Material | Rolled Steel | Shaft Type | NEMA 56 |
| Overall Length | 11.87 in | Frame Length | 7.00 in |
| Shaft Diameter | 0.625 in | Shaft Extension | 1.88 in |
| Assembly/Box Mounting | F1 ONLY | | |
| Outline Drawing | 607-0268-700B | Connection Diagram | 005053.01 |

This is an uncontrolled document once printed or downloaded and is subject to change without notice. Date Created: 10/15/2018



| DASH | "C" | "AD" | | |
|------|-------|------|-----------|------|
| 500 | 9.87 | 4.38 | | |
| 550 | 10.37 | 4.88 | | |
| 600 | 10.87 | 5.38 | CAP. DASH | "XO" |
| 650 | 11.37 | 5.88 | A | 1.15 |
| 700 | 11.87 | 6.38 | B | 1.60 |
| 750 | 12.37 | 6.88 | C | 1.82 |
| 800 | 12.87 | 7.38 | | |

| | | |
|---|-------------------|--------------------|
| DRAWING REVISION B | REVISION BY PK | DATE 10/17/2016 |
| ECO ECO-0110587 | APPROVED BY PK | DATE 10/17/2016 |
| ECO DESCRIPTION NEW DRAWING- RE RELEASED | | |
| <small>COPYRIGHT REGAL BELOIT AMERICA, INC. ALL RIGHTS RESERVED. PROPRIETARY AND CONFIDENTIAL INFORMATION - THIS DOCUMENT IS THE PROPERTY OF REGAL BELOIT AMERICA, INC. ("OWNER") AND CONTAINS OWNER'S PROPRIETARY INFORMATION. ANY PERSON, CORPORATION OR OTHER FIRM RECEIVING IT IS DEEMED, BY RECEIVING IT, TO AGREE THAT IT, AND/OR ANY PART OF IT, SHALL NOT BE DISCLOSED TO ANY PERSON, CORPORATION OR OTHER ENTITY, DUPLICATED, AND/OR USED, EXCEPT AS EXPRESSLY APPROVED IN WRITING IN ADVANCE BY OWNER. THIS DOCUMENT SHALL BE RETURNED TO OWNER UPON REQUEST. IT MAY BE SUBJECT TO CERTAIN RESTRICTIONS UNDER APPLICABLE EXPORT CONTROL LAWS AND REGULATIONS.</small> | | |

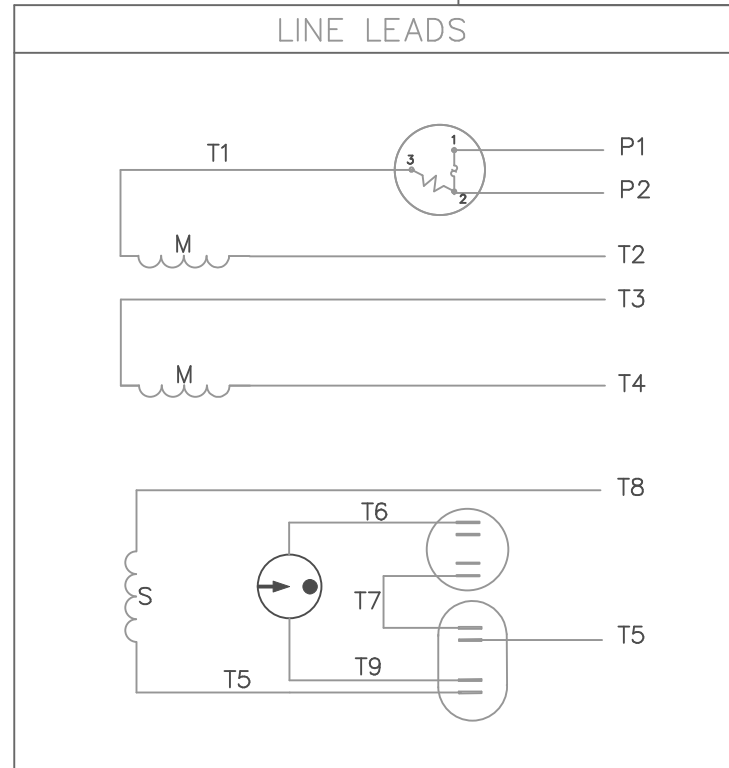
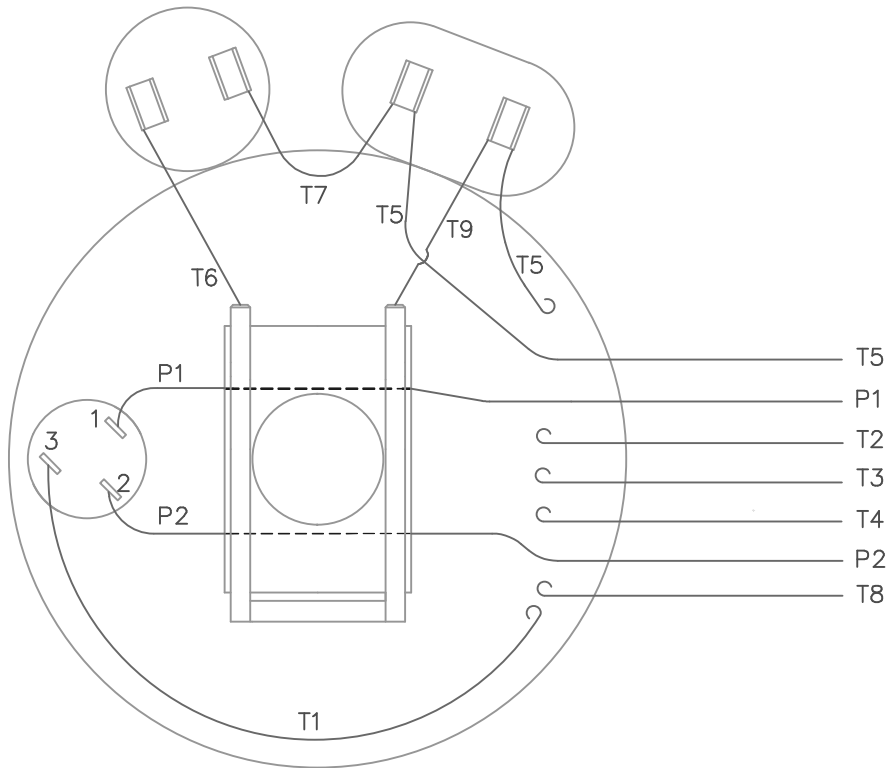
| | | | |
|--|---------|-----------|-------|
| TOLERANCES UNLESS OTHERWISE SPECIFIED: | | | |
| DEC. | INCH | mm | ANGLE |
| .X | ±0.1 | [±2.5] | ±0.5° |
| .XX | ±0.03 | [±0.76] | |
| .XXX | ±0.005 | [±0.127] | |
| .XXXX | ±0.0005 | [±0.0127] | |
| REMOVE BURRS & BREAK SHARP | | | |
| EDGES: .003/.015 [0.076/.381] X 45° | | | |
| CORNER FILLETS: R.02 [51] | | | |
| MACHINED SURFACES: 125/3.2 | | | |
| mm SHOWN IN [BRACKETS] | | | |

| |
|---------------------------|
| DRAWN BY PK |
| DATE 10/14/2016 |
| APPROVED BY PK |
| DATE 10/14/2016 |
| REFERENCE 032501.00 |
| THIRD ANGLE PROJECTION |

| | |
|---|----------------------------|
| Regal Beloit America, Inc. | |
| DESCRIPTION OUTLINE DRIP PROOF - RIGID 56Y FRAME | |
| MATERIAL | PROCESS/FINISH |
| SIZE B | DRAWING NUMBER 607-0268 |
| | SHEET 1 OF 1 |

| |
|--------------------------|
| ORACLE PART REV. 0 |
|--------------------------|

VIEW FROM OUTSIDE OF MOTOR AT SWITCH END.



| | ROTATION FACING LEAD END | L1 | L2 | JOIN | INSULATE SEPARATELY |
|-----------|--------------------------|----|-------------|-------------|---------------------|
| HIGH VOLT | C.C.W. | P1 | T4 T5 | T2,T3 T8 | P2 |
| | C.W. | P1 | T4 T8 | T2,T3 T5 | P2 |
| LOW VOLT | C.C.W. | P1 | T2,T4 T5 | P2,T3 T8 | --- |
| | C.W. | P1 | T2,T4 T8 | P2,T3 T5 | --- |

TOLERANCES UNLESS OTHERWISE SPECIFIED

DECIMALS

.00 ± .01

.000 ± .005

.0000 ± .0005

FRACTIONS ± 1/64

ANGLES ± 1/2°

INCH/MM

LEESON ELECTRIC CORPORATION

DRAWN JRW 09/26/74

CH'K'D.

APPR. TEM

SCALE 1=1

REF. 005004

FMF W-K 6341

TITLE EXTERNAL WIRING DIAGRAM TYPE "K" W/PROTECTOR

MAT'L. DECAL 004011

FINISH

SIZE A

DRAWING NO. 005053-01

BRF

| | | | |
|-----|----------------|-----|----------|
| 18 | REDRAWN ON CAD | DBT | 05/27/97 |
| NO. | REVISION | BY | DATE |

THIS DRAWING IN DESIGN AND DETAIL IS OUR PROPERTY AND MUST NOT BE USED EXCEPT IN CONNECTION WITH OUR WORK ALL RIGHTS OF DESIGN AND INVENTION ARE RESERVED

