

PRODUCT INFORMATION PACKET



Model No: C4T17DC55A

Catalog No: E103014.00

..1/4HP..1800RPM.S56C.ODP.230/460V.3PH.60HZ.CONT.40C.1.35S.F..C FACE.....GENERAL
PURPOSE.NOT.....

Open Drip Proof (ODP)



Regal and Leeson are trademarks of Regal Beloit Corporation or one of its affiliated companies.

©2018 Regal Beloit Corporation, All Rights Reserved. MC017097E





Nameplate Specifications

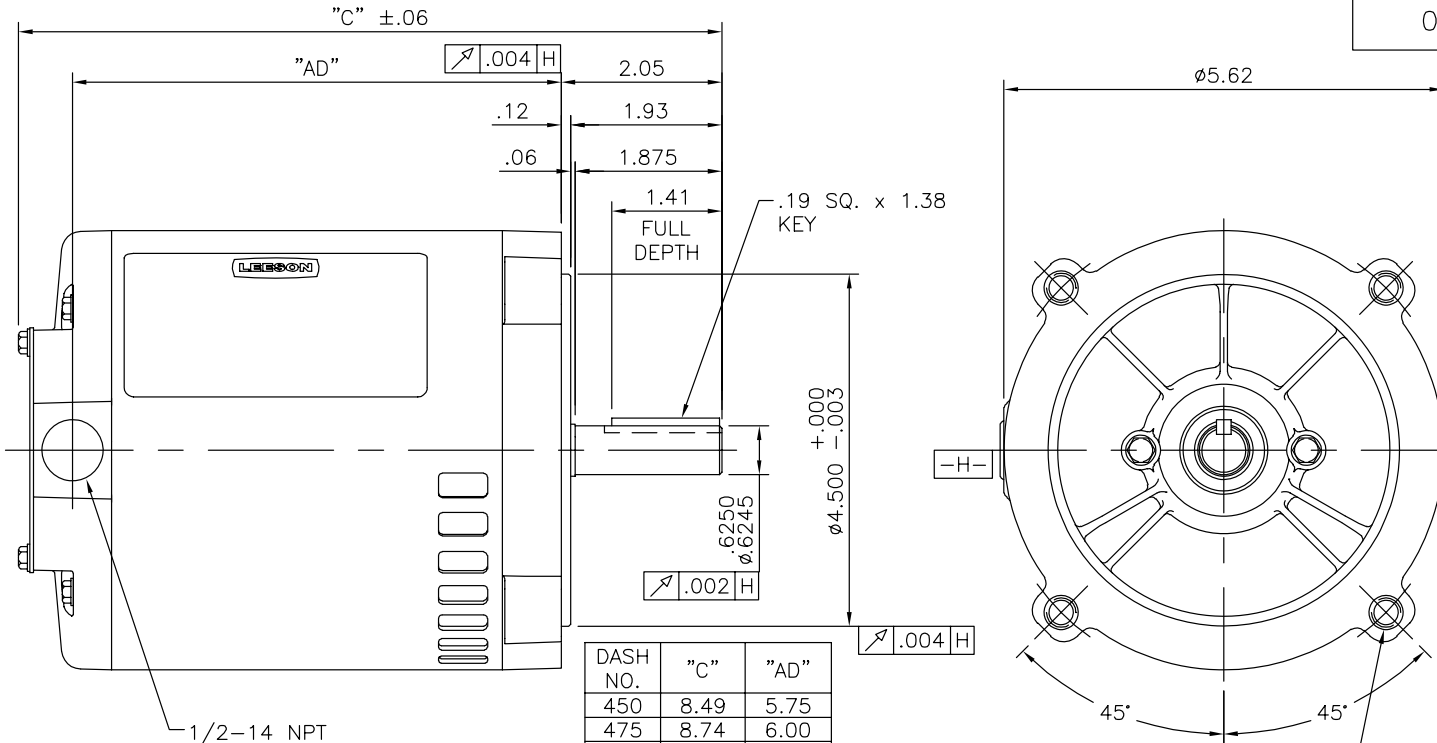
Output HP	0.25 Hp	Output KW	0.19 kW
Frequency	60 Hz	Voltage	230/460 V
Current	1.0/0.50 A	Speed	1725 rpm
Service Factor	1.35	Phase	3
Efficiency	69.5 %	Duty	Continuous
Insulation Class	B	Design Code	B
KVA Code	M	Frame	S56C
Enclosure	Drip Proof	Overload Protector	No
Ambient Temperature	40 °C	Drive End Bearing Size	6203
Opp Drive End Bearing Size	6203	UL	Recognized
CSA	Y	CE	Y
IP Code	22		

Technical Specifications

Electrical Type	Squirrel Cage Inverter Rated	Starting Method	Line Or Inverter
Poles	4	Rotation	Reversible
Mounting	Round	Motor Orientation	HORIZONTAL
Drive End Bearing	BALL	Opp Drive End Bearing	BALL
Frame Material	Rolled Steel	Shaft Type	NEMA 56
Overall Length	10.74 in	Frame Length	6.75 in
Shaft Diameter	0.625 in	Shaft Extension	1.88 in
Assembly/Box Mounting	F1 ONLY		
Outline Drawing	A-031630-675	Connection Diagram	A-EE7308-REGAL

This is an uncontrolled document once printed or downloaded and is subject to change without notice. Date Created: 10/15/2018

031630



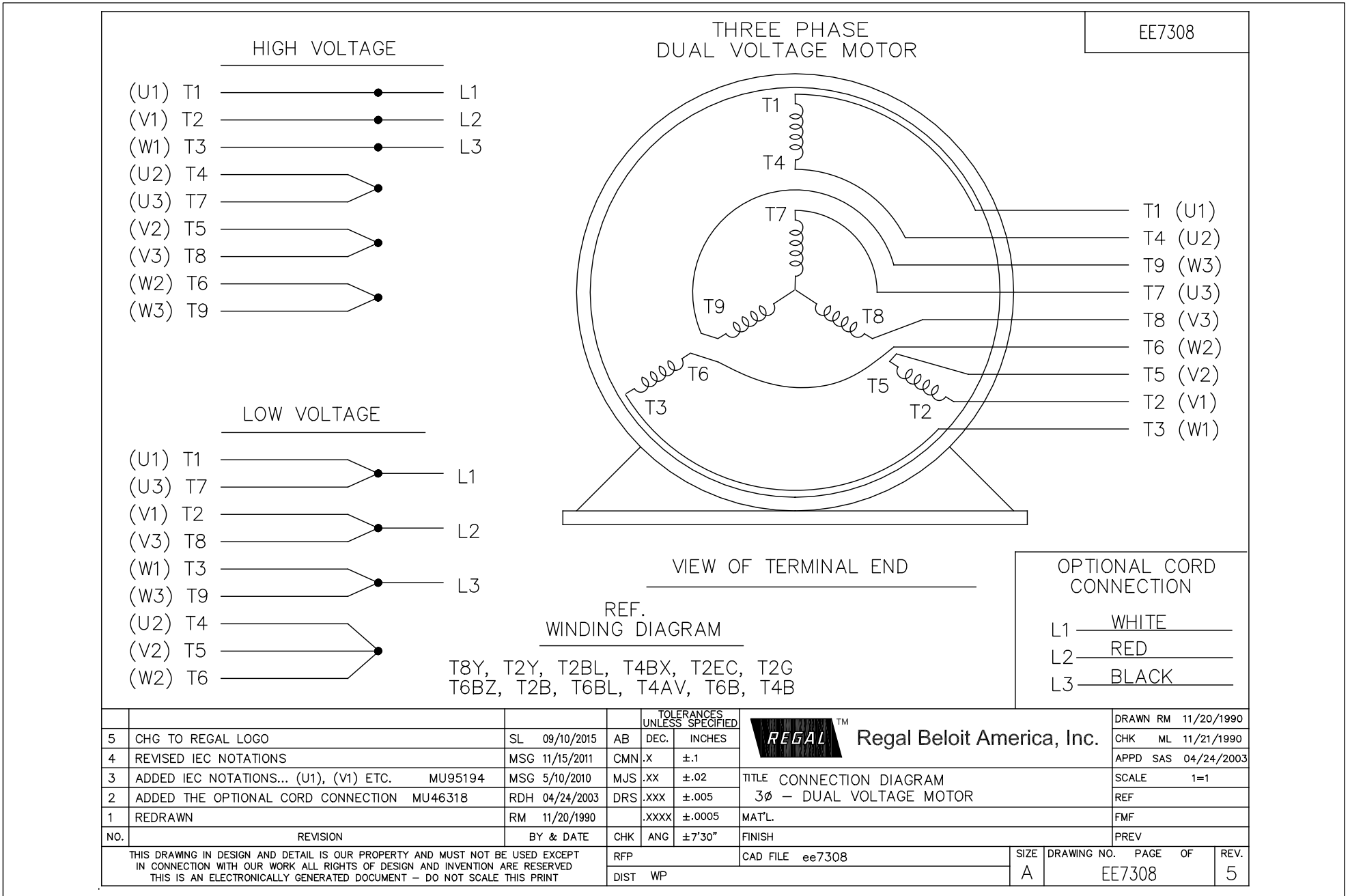
1/2-14 NPT
CONDUIT HOLE
(PLUGGED)

DASH NO.	"C"	"AD"
450	8.49	5.75
475	8.74	6.00
500	8.99	6.25
525	9.24	6.50
550	9.49	6.75
575	9.74	7.00
600	9.99	7.25
625	10.24	7.50
650	10.49	7.75
675	10.74	8.00
700	10.99	8.25
750	11.49	8.75

NO.	REVISION	BY & DATE	CHK	TOLERANCES UNLESS SPECIFIED		TITLE	DRAWN	PG	DATE
				DEC.	INCHES				
03	ADDED DASH # 750	PVR 01/14/15	SM	.XX	±.03	OUTLINE - S56C FRAME "C" FACE MOUNT - DRIP PROOF	CHK		
02	ADDED DASH NO. 700	KMM 4/19/05	PG	.XXX	±.005		APPD		
01	UPDATED CALLOUT OF GD&T	KMM 6/5/02	PG	.XXXX	±.0005		SCALE	1=2	
				ANG	±1/2'	MAT'L.	3 PHASE	REF	031070
						FINISH		FMF	100048
				RFP		CAD FILE	031630	SIZE	DRAWING NO.
				DIST			A		031630
								REV.	03

REGAL™ Regal Beloit America, Inc.

THIS DRAWING IN DESIGN AND DETAIL IS OUR PROPERTY AND MUST NOT BE USED EXCEPT IN CONNECTION WITH OUR WORK ALL RIGHTS OF DESIGN AND INVENTION ARE RESERVED THIS IS AN ELECTRONICALLY GENERATED DOCUMENT - DO NOT SCALE THIS PRINT





CERTIFICATION DATA SHEET

1051 CHEYENNE AVE.
 GRAFTON, WI 53024
 PH, 262-377-8810

CATALOG #: E103014.00

CONN. DIAGRAM: A-EE7308-REGAL

MOUNTING: F1 ONLY

OUTLINE: A-031630-675

WINDING #: TE484124 3

TYPICAL MOTOR PERFORMANCE DATA

HP	KW	SYNC. RPM	F.L. RPM	FRAME	ENCLOSURE	KVA CODE	DESIGN
1/4&1/4	0.1980.19	1800	1725&1425	S56C	DP	M	B

PH	Hz	VOLTS	AMPS	START TYPE	DUTY	INSL	S.F.	AMB°C
3	60/50	230/460&190/380	1/.5&1/.5	LINE OR INVERTER	CONTINUOUS	B3	1.35/1.35	40

FULL LOAD EFF:	69.5	3/4 LOAD EFF:	64.6	1/2 LOAD EFF:	56.6	GTD. EFF		ELEC. TYPE
FULL LOAD PF:	71.5	3/4 LOAD PF:	63	1/2 LOAD PF:	53.2	0		SQ CAGE INV RATED

F.L. TORQUE	LOCKED ROTOR AMPS	L.R. TORQUE	B.D. TORQUE	F.L. RISE°C
12 OZ-FT	6.4 / 3.2	47.8 OZ-FT	52.1 OZ-FT	434 %
				15

SOUND PRESSURE @ 3 FT.	SOUND POWER	ROTOR WK^2	MAX. WK^2	SAFE STALL TIME	STARTS / HOUR	APPROX. MOTOR WGT
0 DBA	10 DBA	0 LB-FT^2	0 LB-FT^2	0 SEC.	0	0 LBS.

*** SUPPLEMENTAL INFORMATION ***

DE BRACKET TYPE	ODE BRACKET TYPE	MOUNT TYPE	ORIENTATION	SEVERE DUTY	HAZARDOUS LOCATION	DRIP COVER	SCREENS	PAINT
C-FACE	STANDARD	ROUND	HORIZONTAL	FALSE	NONE	FALSE	NONE	GREEN (POWDER)

BEARINGS DE ODE	GREASE	SHAFT TYPE	SPECIAL DE	SPECIAL ODE	SHAFT MATERIAL	FRAME MATERIAL
BALL BALL						
6203	MULTEMP SRL	STANDARD 56	NONE	NONE	1144 STRESSPROOF (C-223)	ROLLED STEEL

THERMO-PROTECTORS				THERMISTORS	CONTROL	SPACE HEATERS
THERMOSTATS	PROTECTORS	WDG RTDS	BRG RTDS	NONE	FALSE	NONE
NONE	NOT	NONE	NONE			

INVERTER TORQUE: CONSTANT 2:1

INV. HP SPEED RANGE: NONE

ENCODER: NONE

NONE NONE

NONE NONE

NONE PPR

BRAKE: NONE NONE

NONE P/N NONE

NONE NONE

NONE FT-LB NONE V NONE

NONE NONE

*
 N
 O
 T
 E
 S



Motor Load Data						
Load	0%	25%	50%	75%	100%	LR
Current (Amps)	0.34	0.36	0.39	0.43	0.50	3.2
Torque (ft-lb)	0.00	47.7	95.4	143	191	760
RPM	1800	1780	1765	1755	1740	0
Efficiency (%)		41.3	56.6	64.6	69.5	70.3
P.F. (%)	23.6	39.8	53.2	63.0	71.5	73.9
						76.2
						0.0

Motor Speed Data							Information Block																						
	LR	Pull-Up	BD	Rated	Idle		HP	Sync. RPM	Frame	Enclosure	Construction	Voltage	Frequency	Design	LR Code letter	Service Factor	Temp Rise @ FL	Duty	Ambient	Elevation	Rotor/Shaft wk ²	Ref Wdg	Sound Pressure @ 1M	VFD Rating	Outline Dwg	Conn. Diag	Additional Specifications:		
Speed (RPM)	0	900	1300	1740	1800		0.3	1800	48	DP	TDR	230/460#190/380	60	B	M	1.15	15	CONT	40	1,000	0.00	TE484124	0	CONSTANT 2:1	A-031630-675	A-EE7308-REGAL			
Current (Amps)	3.2	3.1	1.90	0.50	0.34																								
Torque (ft-lb)	760	712	829	191	0.00																								

