

PRODUCT INFORMATION PACKET



Model No: C4T17DH45A

Catalog No: E100027.00

..1/4 HP..1800RPM.S56.ODP.230/460V.3PH.60HZ.CONT.40C.1.35 S.F..RIGID.....

Open Drip Proof (ODP)



Regal and Leeson are trademarks of Regal Beloit Corporation or one of its affiliated companies.

©2018 Regal Beloit Corporation, All Rights Reserved. MC017097E





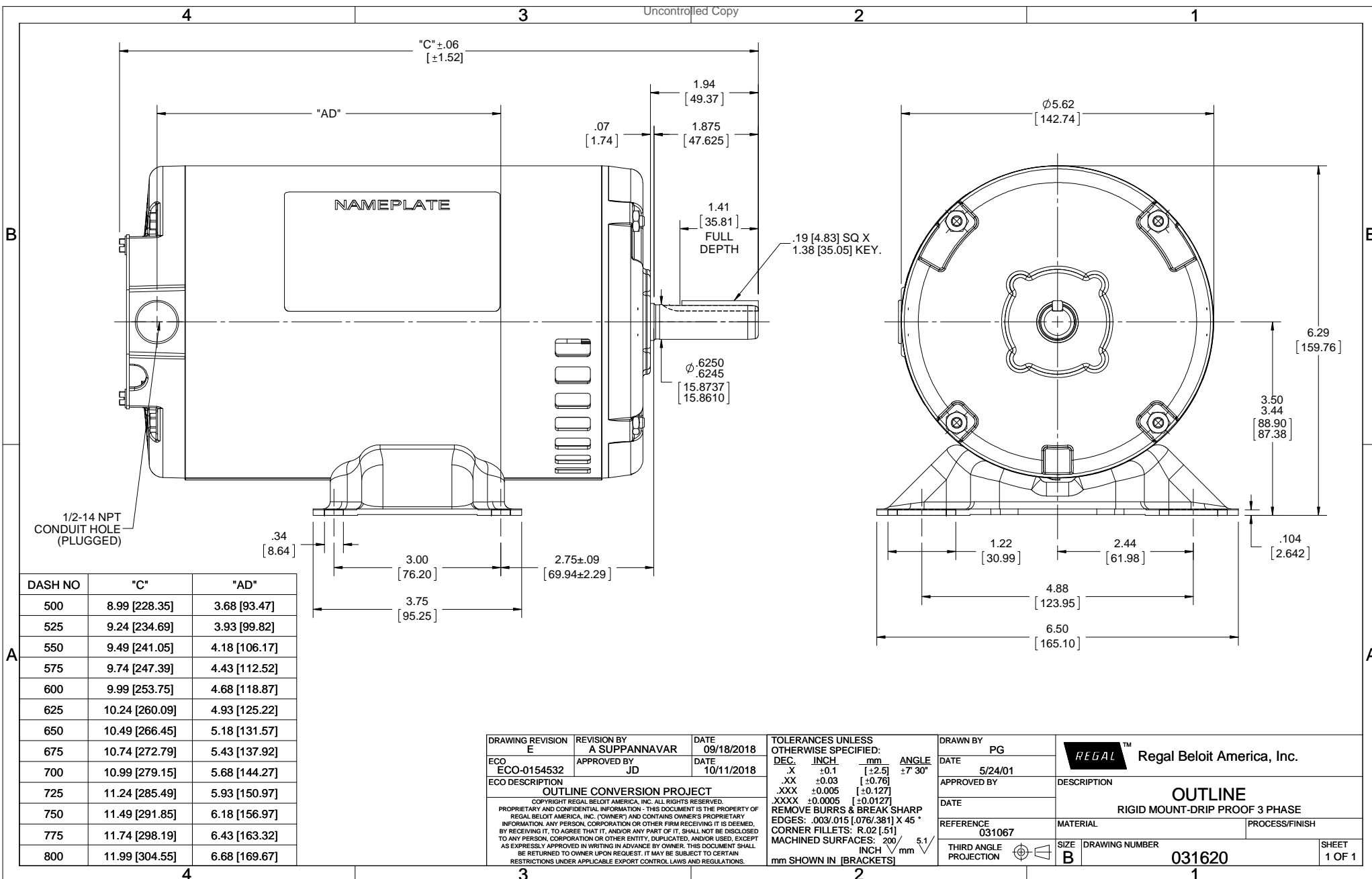
Nameplate Specifications

Output HP	0.25 Hp	Output KW	0.19 kW
Frequency	60 Hz	Voltage	230/460 V
Current	1.0/0.50 A	Speed	1725 rpm
Service Factor	1.35	Phase	3
Efficiency	69.5 %	Duty	Continuous
Insulation Class	B	Design Code	B
KVA Code	M	Frame	S56
Enclosure	Drip Proof	Overload Protector	No
Ambient Temperature	40 °C	Drive End Bearing Size	6203
Opp Drive End Bearing Size	6203	UL	Recognized
CSA	Y	CE	Y
IP Code	22		

Technical Specifications

Electrical Type	Squirrel Cage Inverter Rated	Starting Method	Line Or Inverter
Poles	4	Rotation	Reversible
Mounting	Rigid base	Motor Orientation	HORIZONTAL
Drive End Bearing	BALL	Opp Drive End Bearing	BALL
Frame Material	Rolled Steel	Shaft Type	NEMA 56
Overall Length	10.74 in	Frame Length	6.75 in
Shaft Diameter	0.625 in	Shaft Extension	1.88 in
Assembly/Box Mounting	F1 ONLY		
Outline Drawing	A-031620-675	Connection Diagram	A-EE7308-REGAL

This is an uncontrolled document once printed or downloaded and is subject to change without notice. Date Created: 10/15/2018



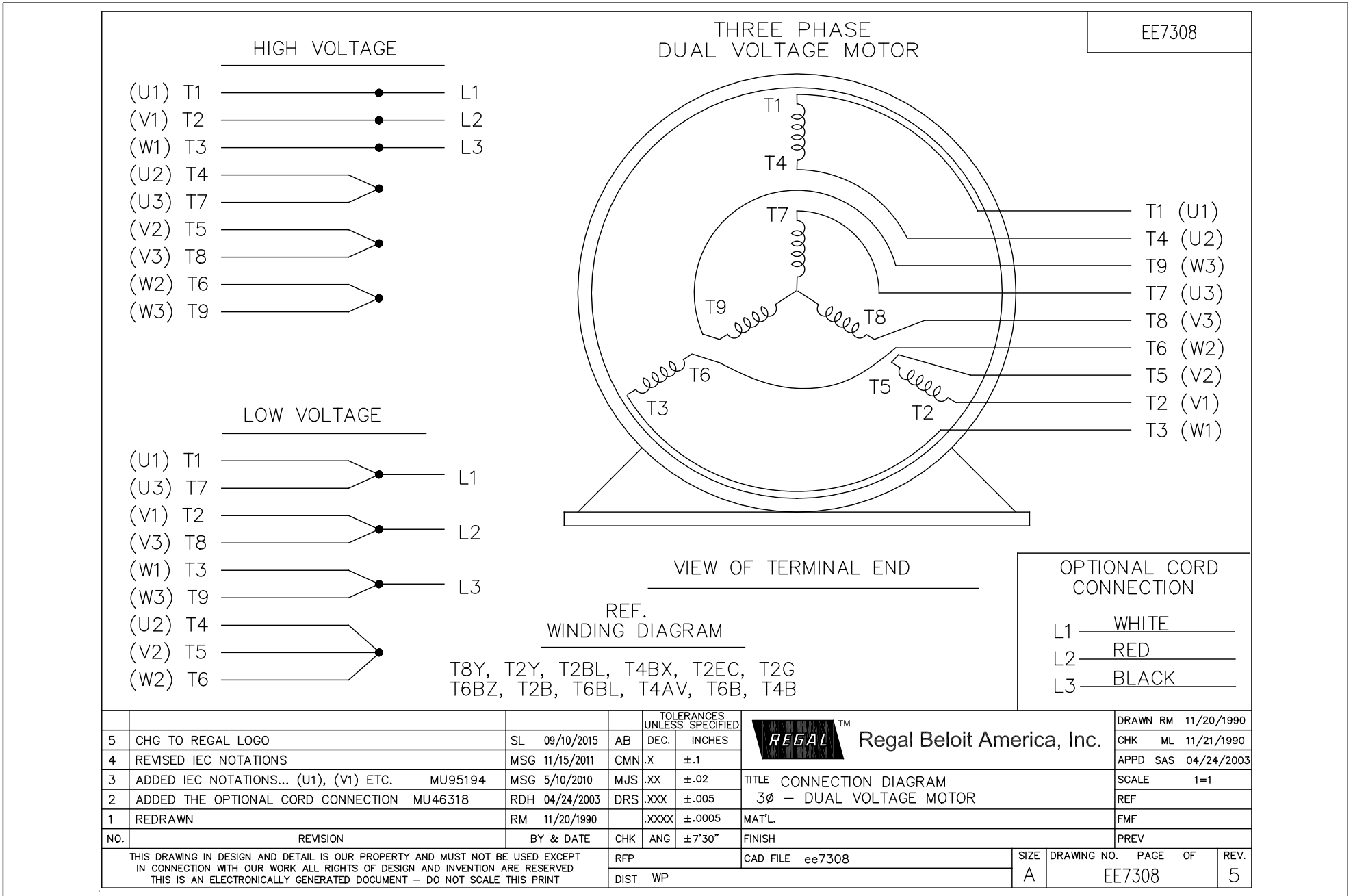
DASH NO	"C"	"AD"
500	8.99 [228.35]	3.68 [93.47]
525	9.24 [234.69]	3.93 [99.82]
550	9.49 [241.05]	4.18 [106.17]
575	9.74 [247.39]	4.43 [112.52]
600	9.99 [253.75]	4.68 [118.87]
625	10.24 [260.09]	4.93 [125.22]
650	10.49 [266.45]	5.18 [131.57]
675	10.74 [272.79]	5.43 [137.92]
700	10.99 [279.15]	5.68 [144.27]
725	11.24 [285.49]	5.93 [150.97]
750	11.49 [291.85]	6.18 [156.97]
775	11.74 [298.19]	6.43 [163.32]
800	11.99 [304.55]	6.68 [169.67]

DRAWING REVISION E	REVISION BY A SUPPANAVAR	DATE 09/18/2018
ECO ECO-0154532	APPROVED BY JD	DATE 10/11/2018
ECO DESCRIPTION OUTLINE CONVERSION PROJECT		
<small>COPYRIGHT REGAL BELOIT AMERICA, INC. ALL RIGHTS RESERVED. PROPRIETARY AND CONFIDENTIAL INFORMATION - THIS DOCUMENT IS THE PROPERTY OF REGAL BELOIT AMERICA, INC. ("OWNER") AND CONTAINS OWNER'S PROPRIETARY INFORMATION. ANY PERSON, CORPORATION OR OTHER FIRM RECEIVING IT IS DEEMED, BY RECEIVING IT, TO AGREE THAT IT, AND/OR ANY PART OF IT, SHALL NOT BE DISCLOSED TO ANY PERSON, CORPORATION OR OTHER ENTITY, DUPLICATED, AND/OR USED, EXCEPT AS EXPRESSLY APPROVED IN WRITING IN ADVANCE BY OWNER. THIS DOCUMENT SHALL BE RETURNED TO OWNER UPON REQUEST. IT MAY BE SUBJECT TO CERTAIN RESTRICTIONS UNDER APPLICABLE EXPORT CONTROL LAWS AND REGULATIONS.</small>		

TOLERANCES UNLESS OTHERWISE SPECIFIED:		
DEC.	INCH	mm
.X	+0.1	[+2.5]
.XX	+0.03	[+0.76]
.XXX	+0.005	[+0.127]
.XXXX	+0.0005	[+0.0127]
REMOVE BURRS & BREAK SHARP		
EDGES: .003/.015 [0.076/.381] X 45°		
CORNER FILLETS: R.02 [51]		
MACHINED SURFACES:	200	5.1
	INCH	mm
mm SHOWN IN [BRACKETS]		

DRAWN BY PG	DATE 5/24/01
APPROVED BY	DATE
REFERENCE 031067	THIRD ANGLE PROJECTION

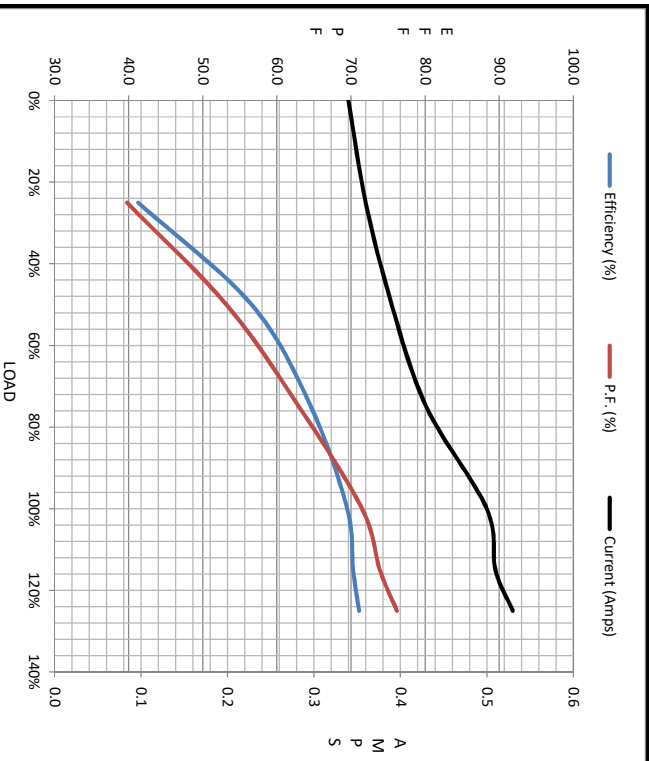
Regal Beloit America, Inc.	
DESCRIPTION OUTLINE RIGID MOUNT-DRIP PROOF 3 PHASE	
MATERIAL	PROCESS/FINISH
SIZE B	DRAWING NUMBER 031620
	SHEET 1 OF 1





Motor Load Data						
Load	0%	25%	50%	75%	100%	LR
Current (Amps)	0.34	0.36	0.39	0.43	0.50	3.2
Torque (ft-lb)	0.00	47.7	95.4	143	191	760
RPM	1800	1780	1765	1755	1740	0
Efficiency (%)		41.3	56.6	64.6	69.5	71.1
P.F. (%)	23.6	39.8	53.2	63.0	71.5	76.2

Motor Speed Data						
	LR	Pull-Up	BD	Rated	Idle	
Speed (RPM)	0	900	1300	1740	1800	Information Block
Current (Amps)	3.2	3.1	1.90	0.50	0.34	HP 0.3
Torque (ft-lb)	760	712	829	191	0.00	Sync. RPM 1800
						Frame 48
						Enclosure DP
						Construction TDR
						Voltage 230/460#190/380 V
						Frequency 60 Hz
						Design B
						LR Code letter M
						Service Factor 1.15
						Temp Rise @ FL 15 °C
						Duty CONT
						Ambient 40 °C
						Elevation 1,000 feet
						Rotor/Shaft wk ² 0.00 LB-Ft ²
						Ref Wdg TE484124 NONE
						Sound Pressure @ 1M 0 dBA
						VFD Rating CONSTANT 2:1
						Outline Dwg A-A031620-675
						Conn. Diag A-EE7308-REGAL
						Additional Specifications:
						0
						EQUIV CKT (OHMS / PHASE)
						R1 R2 X1 X2 Xm
						0.0000 0.0000 0.0000 0.0000 0.0000



	R1	R2	X1	X2	Xm
	0.0000	0.0000	0.0000	0.0000	0.0000

