

PRODUCT INFORMATION PACKET



Model No: 970.621B

Catalog No: 970.621

..1/6HP..3000RPM.56D.IP44.24V...S1.40C.1,0SF.B14.970.621B.....COMMERCIAL DUTY.....

Metric Motors



Regal and Leeson are trademarks of Regal Beloit Corporation or one of its affiliated companies.

©2018 Regal Beloit Corporation, All Rights Reserved. MC017097E





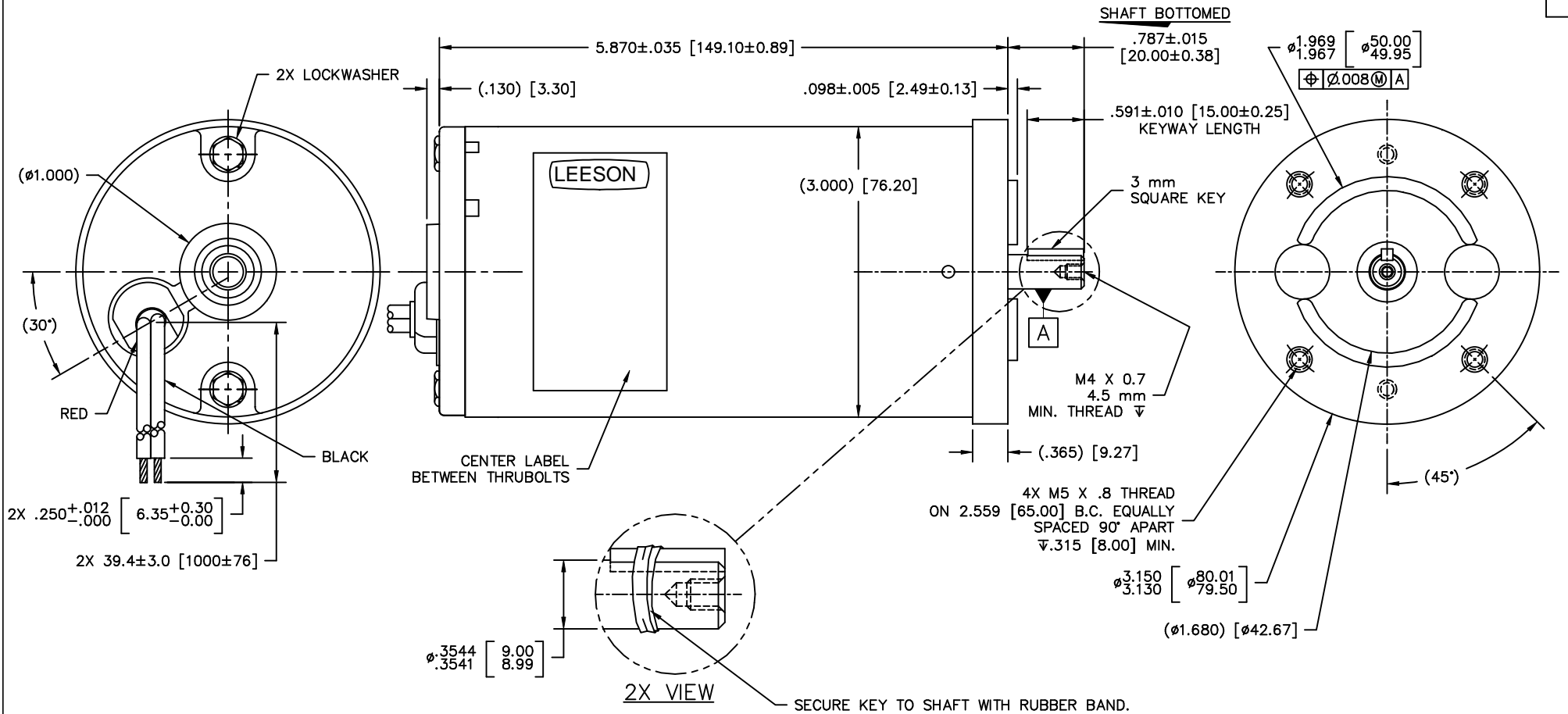
Nameplate Specifications

Output KW	0.13 kW	Voltage	24 V
Current	6.8 A	Speed	3000 rpm
Service Factor	1	Efficiency	75.1 %
Duty	S1	Insulation Class	F
Frame	56D	Enclosure	IP44
Overload Protector	No	Ambient Temperature	40 °C
UL	Recognized	CSA	Y
CE	N		

Technical Specifications

Rotation	Reversible	Mounting	B14
Overall Length	6.65 in	Frame Length	5.24 in
Shaft Diameter	0.375 in	Shaft Extension	0.787 in
Outline Drawing	970621OL	Connection Diagram	970621FI

This is an uncontrolled document once printed or downloaded and is subject to change without notice. Date Created: 10/15/2018



- NOTES:**
1. ROTATION: RED POSITIVE CCWSE; REVERSIBLE
 2. LEADS: 14 AWG
 3. END PLAY: .005-.030
 4. HIPOT: 1250 VAC FOR ONE SECOND, BOTH LEADS TO CASE
 5. VOLTAGE: 24 VDC
 6. INSULATION: CLASS F 155°C
 7. BEARING SYSTEM: SLEEVE BOTH ENDS
 8. LOAD POINT: 60 ozin @ 2900-3200 RPM
 9. RUST PROOF SHAFT & KEY DUE TO STORAGE.

				TOLERANCES UNLESS OTHERWISE SPECIFIED		LEESON LEESON ELECTRIC CORPORATION	
				DECIMALS		TRU-TORQ DIVISION 201 N. MISSOURI AVE. SEDALIA, MO 65301 U.S.A. ELECTRIC MOTORS, GEARMOTORS AND DRIVES	
				.00	±.01	DRAWN AD 11/1/00	TITLE
				.000	±.005	CH'K'D.	OUTLINE
000	RELEASE	1639	AD	11/1/00	.0000	±.0005	APPR.
REV	DISCRPTION	ECRN	BY	DATE	FRACTIONAL	±1/64	SCALE 1 : 1
				ANGLES		±1/2"	P/C
				INCH/MM		M/F	SIZE
							DRAWING NO.
							B 970.6210L

```
ERROR: syntaxerror
OFFENDING COMMAND: --nostringval--
STACK :
  /im
  -savelevel -
```


1. HIPOT @ 1250 VOLTS FOR ONE SECOND, BOTH LEADS TO CASE
2. RED LEAD POS (+) } CCWSE
 BLACK LEAD NEG (-)
3. RUN IN @ 24 VDC, .75 MAX AMPS, NO LOAD
4. TORQUE THRUBOLTS TO 25-30 IN. LBS.

CHECKS TO OUTLINE DRAWING

- A. SHAFT EXTENSION AND FEATURES
- B. LEAD LENGTH & STRIP
- C. END PLAY
- D. SHAFT ROTATION
- E. LABEL POSITION & DATE CODE
- F. ALL HOLES TAPPED PER OUTLINE DRAWING

PERFORMANCE SPECIFICATIONS

TORQUE	SPEED	MAX AMPS
20 OZ. IN.	2850-3150	3.30
40 OZ. IN.	2700-3050	5.30
60 OZ. IN.	2550-2900	7.50

			TOLERANCES UNLESS SPECIFIED			ELECTRIC MOTORS GEARMOTORS AND DRIVES	DRAWN AD 11/1/00	
			DEC.	INCHES			CHK	
			.X	±.1			APPD	
			.XX	±.01			SCALE 1=1	
			.XXX	±.005	TITLE	FINAL INSPECTION 30 FRAME DC	REF	
00	RELEASED	AD 11/1/00	.XXXX	±.0005	MAT'L.		FMF 970.621	
NO.	REVISION	BY & DATE	CHK	ANG	±1/2"	FINISH	PREV	
THIS DRAWING IN DESIGN AND DETAIL IS OUR PROPERTY AND MUST NOT BE USED EXCEPT IN CONNECTION WITH OUR WORK ALL RIGHTS OF DESIGN AND INVENTION ARE RESERVED THIS IS AN ELECTRONICALLY GENERATED DOCUMENT - DO NOT SCALE THIS PRINT			RFP	CAD FILE 970621FI		SIZE	DRAWING NO.	REV.
			DIST			A	970.621FI	00