

PRODUCT INFORMATION PACKET



Model No: 970.620B

Catalog No: 970.620

..1/6HP..3000RPM.56D.IP44.12V...S1.40C.1,0SF.B14.970.620B.....COMMERCIAL DUTY.....

Metric Motors



Regal and Leeson are trademarks of Regal Beloit Corporation or one of its affiliated companies.

©2018 Regal Beloit Corporation, All Rights Reserved. MC017097E





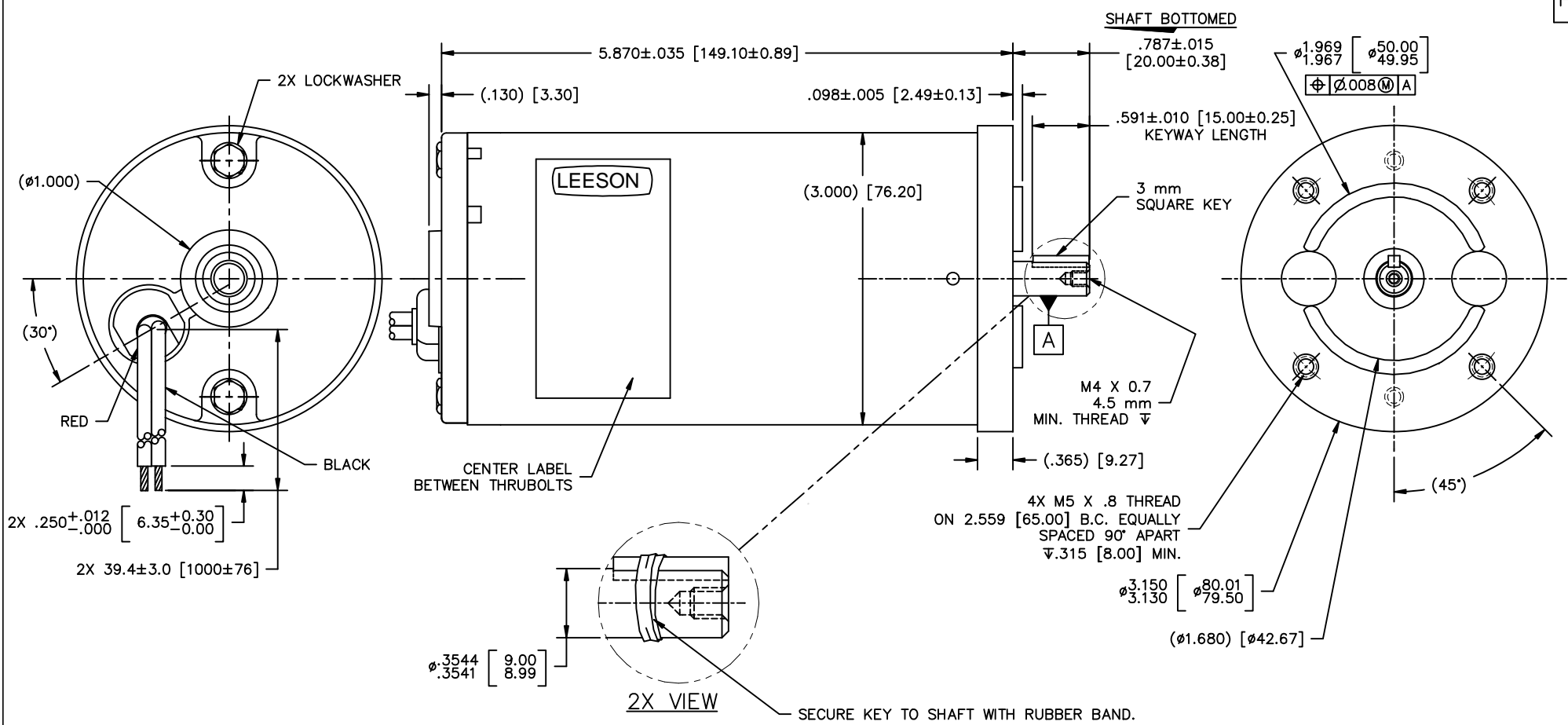
Nameplate Specifications

Output KW	0.13 kW	Voltage	12 V
Current	13.1 A	Speed	3000 rpm
Service Factor	1	Efficiency	71.8 %
Duty	S1	Insulation Class	F
Frame	56D	Enclosure	IP44
Overload Protector	No	Ambient Temperature	40 °C
UL	Recognized	CSA	Y
CE	N		

Technical Specifications

Rotation	Reversible	Mounting	B14
Overall Length	5.87 in	Frame Length	5.24 in
Shaft Diameter	0.375 in	Shaft Extension	0.787 in
Outline Drawing	970620OL	Connection Diagram	970620FI

This is an uncontrolled document once printed or downloaded and is subject to change without notice. Date Created: 10/15/2018



- NOTES:**
1. ROTATION: RED POSITIVE CCWSE; REVERSIBLE
 2. LEADS: 14 AWG
 3. END PLAY: .005-.030
 4. HIPOT: 1250 VAC FOR ONE SECOND, BOTH LEADS TO CASE
 5. VOLTAGE: 12 VDC
 6. INSULATION: CLASS F 155°C
 7. BEARING SYSTEM: SLEEVE BOTH ENDS
 8. LOAD POINT: 60 ozin @ 2900-3200 RPM
 9. RUST PROOF SHAFT & KEY DUE TO STORAGE.

				TOLERANCES UNLESS OTHERWISE SPECIFIED		LEESON LEESON ELECTRIC CORPORATION TRU-TORO DIVISION 201 N. MISSOURI AVE. SEDALIA, MO 65301 U.S.A. ELECTRIC MOTORS, GEARMOTORS AND DRIVES	
				DECIMALS		DRAWN AD 11/1/00	
				.00	±.01	TITLE	
				.000	±.005	CH'K'D.	
000 RELEASE				1639	AD	11/1/00	APPR.
REV DISCRPTION				ECRN	BY	DATE	MATL. &/or CUST.
				FRACTIONAL		SCALE 1 : 1	12 VDC
				ANGLES		P/C	SIZE
				INCH/MM		M/F	DRAWING NO.
THIS DRAWING IN DESIGN AND DETAIL IS OUR PROPERTY AND MUST NOT BE USED EXCEPT IN CONNECTION WITH OUR WORK ALL RIGHTS OF DESIGN AND INVENTION ARE RESERVED							B 970.6200L


1. HIPOT @ 1250 VOLTS FOR ONE SECOND, BOTH LEADS TO CASE
 2. RED LEAD POS (+)
 - BLACK LEAD NEG (-)
 3. RUN IN @ 12 VDC, 1.50 MAX AMPS, NO LOAD
 4. TORQUE THRUBOLTS TO 25-30 IN. LBS.
- } CCWSE

CHECKS TO OUTLINE DRAWING

- A. SHAFT EXTENSION AND FEATURES
- B. LEAD LENGTH & STRIP
- C. END PLAY
- D. SHAFT ROTATION
- E. LABEL POSITION & DATE CODE
- F. ALL HOLES TAPPED PER OUTLINE DRAWING

PERFORMANCE SPECIFICATIONS

TORQUE	SPEED	MAX AMPS
20 OZ. IN.	2850-3150	6.60
40 OZ. IN.	2700-3050	10.60
60 OZ. IN.	2550-2900	15.00

				TOLERANCES UNLESS SPECIFIED		 ELECTRIC MOTORS GEARMOTORS AND DRIVES	DRAWN AD 11/1/00		
				DEC.	INCHES		CHK		
				.X	±.1		APPD		
				.XX	±.01		SCALE 1=1		
				.XXX	±.005	TITLE FINAL INSPECTION 30 FRAME DC	REF		
00	RELEASED	AD 11/1/00		.XXXX	±.0005	MAT'L.	FMF 970.620		
NO.	REVISION	BY & DATE	CHK	ANG	±1/2"	FINISH	PREV		
THIS DRAWING IN DESIGN AND DETAIL IS OUR PROPERTY AND MUST NOT BE USED EXCEPT IN CONNECTION WITH OUR WORK ALL RIGHTS OF DESIGN AND INVENTION ARE RESERVED THIS IS AN ELECTRONICALLY GENERATED DOCUMENT - DO NOT SCALE THIS PRINT				RFP	CAD FILE	970620FI	SIZE A	DRAWING NO. 970.620FI	REV. 00
				DIST					