

# PRODUCT INFORMATION PACKET



Model No: 811630.00  
Catalog No: 811630.00  
10 HP Variable Speed Motor, 3 phase, 1200 RPM, 230/460 V, 256TC Frame, TENV  
1000:1 Speed Ratio Motors



Regal and Leeson are trademarks of Regal Beloit Corporation or one of its affiliated companies.  
©2019 Regal Beloit Corporation, All Rights Reserved. MC017097E

REGAL



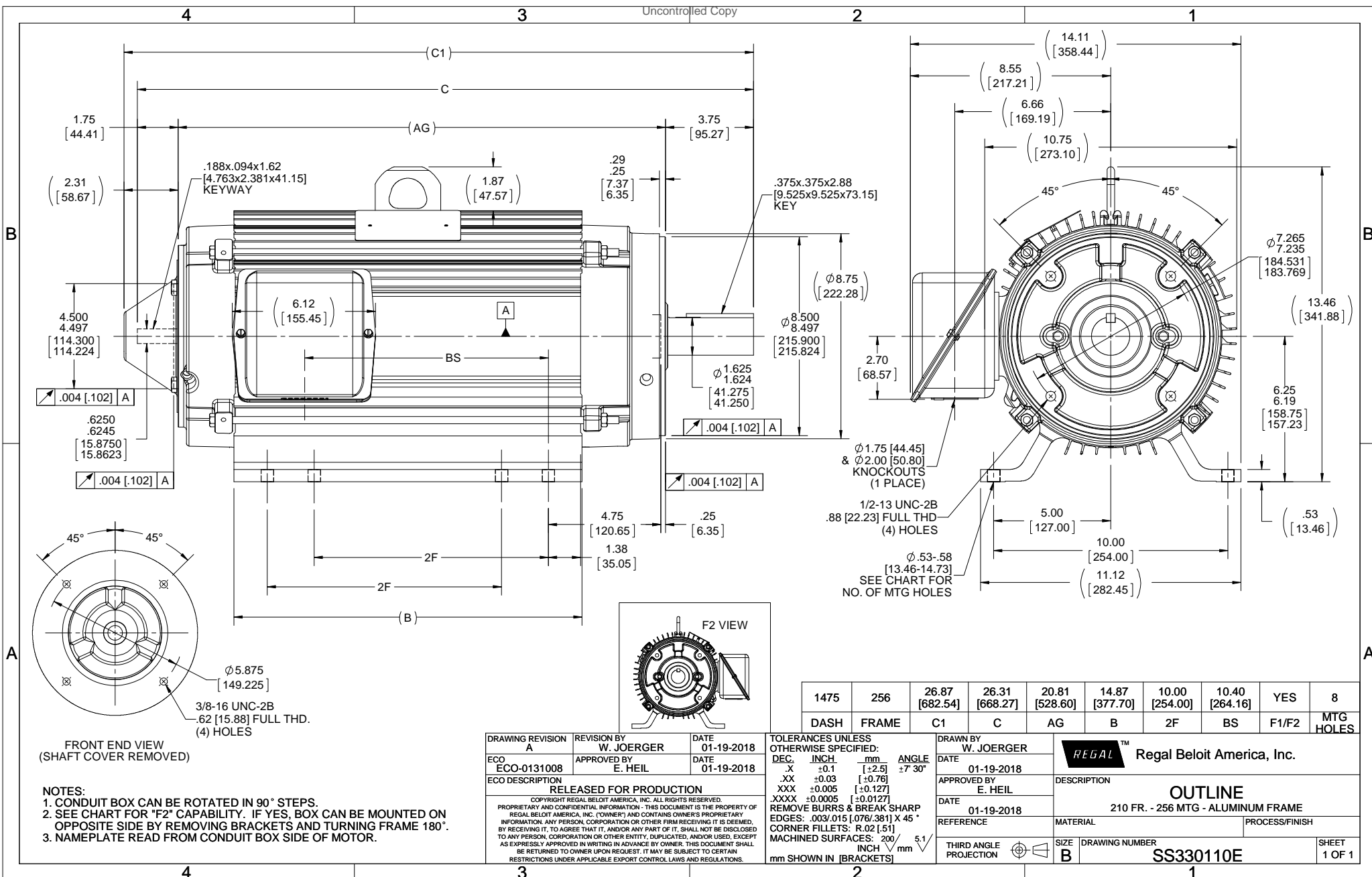
## Nameplate Specifications

Output HP	10 Hp	Output KW	7.5 kW
Frequency	60 Hz	Voltage	230/460 V
Current	28.0/14.0 A	Speed	1160 rpm
Service Factor	1	Phase	3
Efficiency	89.5 %	Power Factor	75.5
Duty	Continuous	Insulation Class	F
Design Code	INV	KVA Code	J
Frame	256TC	Enclosure	Totally Enclosed Non Ventilated
Thermal Protection	No	Ambient Temperature	40 °C
Drive End Bearing Size	6309	Opp Drive End Bearing Size	6206
UL	Recognized	CSA	Y
CE	Y	IP Code	43

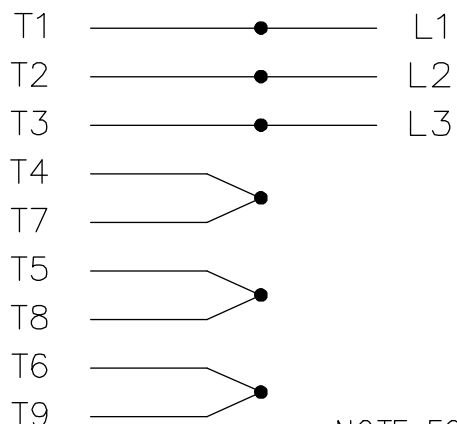
## Technical Specifications

Electrical Type	Squirrel Cage Inverter Duty	Starting Method	Inverter Only
Poles	6	Rotation	Reversible
Resistance Main	.765 Ohms	Mounting	Rigid base
Motor Orientation	Horizontal	Drive End Bearing	Ball
Opp Drive End Bearing	Ball	Frame Material	Aluminum
Shaft Type	T	Overall Length	26.31 in
Frame Length	14.75 in	Shaft Diameter	1.625 in
Shaft Extension	3.75 in	Assembly/Box Mounting	F1/F2 CAPABLE

This is an uncontrolled document once printed or downloaded and is subject to change without notice. Date Created:01/11/2019

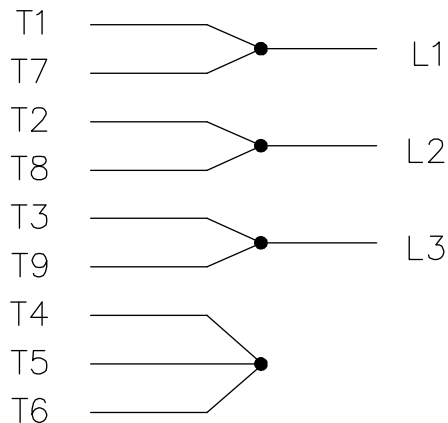


# HIGH VOLTAGE



NOTE FOR FACTORY USE ONLY:  
TO SURGE TEST FOR COMMON CONNECT:  
HIGH VOLT: CONNECT P1 TO T1  
THEN P2 TO L1  
LOW VOLT: CONNECT P1 TO T1 & T7,  
THEN P2 TO L1

# LOW VOLTAGE

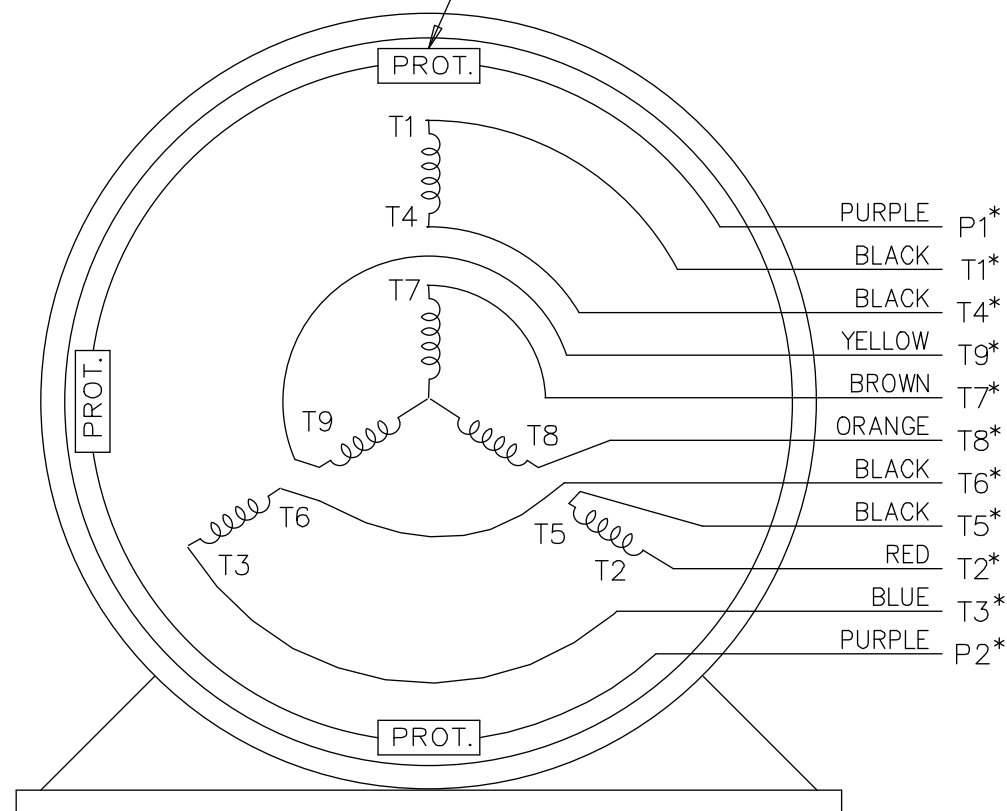


\* USE LEADS AS PER PLANT STANDARD IRRWSPECTIVE OF THEIR COLOUR.


# THREE PHASE DUAL VOLTAGE MOTOR

EE7308T-LE

THREMO-PROTECTORS  
CONNECTED IN SERIES.



VIEW OF TERMINAL END

				TOLERANCES UNLESS SPECIFIED			ELECTRIC MOTORS GEARMOTORS AND DRIVES		DRAWN TJB 05-07-2002			
05	ADDED * NOTE PER ECN # 26921	UD 01-30-2013	JD	DEC.	INCHES				CHK	ML	05-08-2002	
04	ADDED COLORS TO "T & P" LEADS CN 40494	MSG 08-08-2006	ML	.X	±.1				TITLE CONNECTION DIAGRAM 3 PHASE – DUAL VOLTAGE MOTOR			APPD
03	RE-ISSUE	NJS 04-21-2004	JET	.XX	±.02	SCALE	1=1					
02	REDRAWN	TAT 04-20-2004	ML	.XXX	±.005	MAT'L.			REF			
01	NEW DRAWING CN 34708	TJB 05-08-2002	ML	.XXXX	±.0005				FMF			
NO.	REVISION	BY & DATE	CHK	ANG	±7'30"	FINISH			PREV			
THIS DRAWING IN DESIGN AND DETAIL IS OUR PROPERTY AND MUST NOT BE USED EXCEPT IN CONNECTION WITH OUR WORK ALL RIGHTS OF DESIGN AND INVENTION ARE RESERVED THIS IS AN ELECTRONICALLY GENERATED DOCUMENT – DO NOT SCALE THIS PRINT			RFP			CAD FILE EE7308T_LE			SIZE	DRAWING NO.	PAGE OF	REV.
			DIST LB-WP-LE						A	EE7308T-LE		05