

# PRODUCT INFORMATION PACKET



Model No: 191547.00  
Catalog No: 191547.00  
0.50 HP Washdown Motor, 1 phase, 1800 RPM, 115/230 V, 48YZ Frame, TEAO  
Washdown Pedestal Fan Motors



Regal and Leeson are trademarks of Regal Beloit Corporation or one of its affiliated companies.  
©2019 Regal Beloit Corporation, All Rights Reserved. MC017097E





**Nameplate Specifications**

Output HP	<b>0.50 Hp</b>	Output KW	<b>0.37 kW</b>
Frequency	<b>60 Hz</b>	Voltage	<b>115/230 V</b>
Current	<b>5.2/2.6 A</b>	Speed	<b>1750 rpm</b>
Service Factor	<b>1</b>	Phase	<b>1</b>
Efficiency	<b>72 %</b>	Power Factor	<b>97</b>
Duty	<b>Continuous</b>	Insulation Class	<b>F</b>
Design Code	<b>No Design Code</b>	KVA Code	<b>D</b>
Frame	<b>48YZ</b>	Enclosure	<b>Totally Enclosed Air Over</b>
Thermal Protection	<b>Automatic</b>	Ambient Temperature	<b>40 °C</b>
Drive End Bearing Size	<b>6203</b>	Opp Drive End Bearing Size	<b>6203</b>
UL	<b>Recognized</b>	CSA	<b>Y</b>
CE	<b>N</b>	IP Code	<b>55</b>

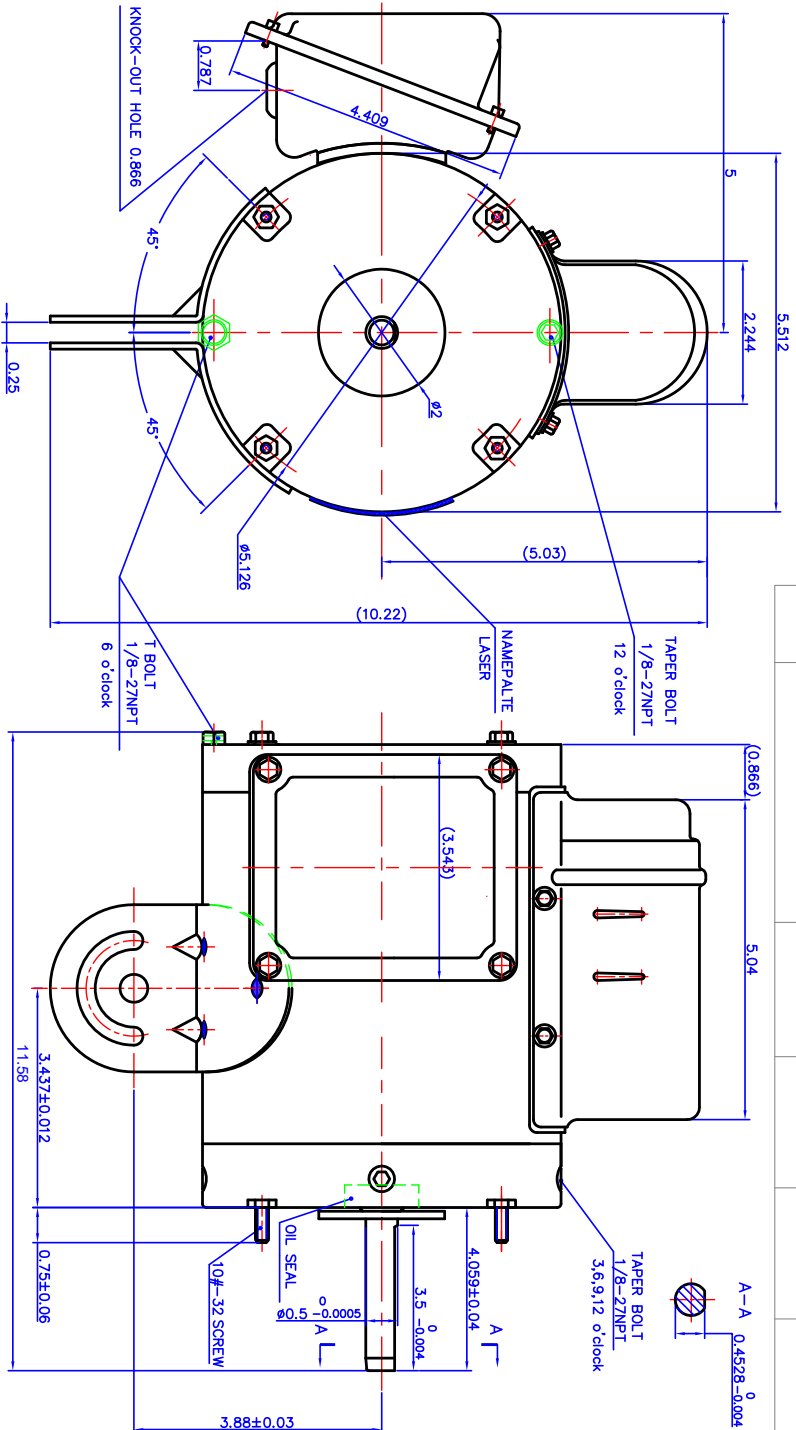
**Technical Specifications**

Electrical Type	<b>Permanent Split Capacitor</b>	Starting Method	<b>Across The Line</b>
Poles	<b>4</b>	Rotation	<b>Selective Clockwise</b>
Resistance Main	<b>8.376 Ohms</b>	Mounting	<b>Round - Extended Studs</b>
Motor Orientation	<b>Horizontal</b>	Drive End Bearing	<b>Ball</b>
Opp Drive End Bearing	<b>Ball</b>	Frame Material	<b>Stainless Steel</b>
Shaft Type	<b>Single Special Extension</b>	Overall Length	<b>11.58 in</b>
Shaft Diameter	<b>0.500 in</b>	Shaft Extension	<b>4.05 in</b>
Assembly/Box Mounting	<b>F1 Only</b>		

This is an uncontrolled document once printed or downloaded and is subject to change without notice. Date Created:04/11/2019

Uncontrolled Copy

REV	ECO	REV BY	DATE	APPD	DATE



DR BY:	
APPD:	
FIRST ANGLE PROJECTION	EDS DATE
VERSION	

CONFIDENTIAL: THIS DRAWING AND ITS INFORMATION ARE THE EXCLUSIVE AND CONFIDENTIAL PROPERTY OF REGAL BELLOTT CORPORATION AND ARE NOT TO BE DISCLOSED, DUPLICATED, DISTRIBUTED OR OTHERWISE USED WITHOUT THE WRITTEN CONSENT OF THE AFFILIATE OF REGAL BELLOTT CORPORATION.  
-ALL RIGHTS RESERVED.

DESCRIPTION	SIZE	DWG NO	SHEET
Single Phase 48 Stainless Steel Motors	A3	OL19154700	
SCALE	1:1.5		