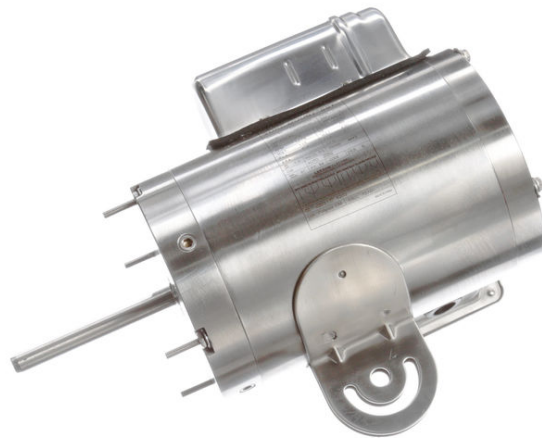


PRODUCT INFORMATION PACKET



Model No: 191546.00
Catalog No: 191546.00
0.33 HP Washdown Motor, 1 phase, 1200 RPM, 115/230 V, 48YZ Frame, TEAO
Washdown Pedestal Fan Motors



Regal and Leeson are trademarks of Regal Beloit Corporation or one of its affiliated companies.
©2019 Regal Beloit Corporation, All Rights Reserved. MC017097E

The Regal logo is located in the bottom right corner. It features the word "REGAL" in a white, bold, sans-serif font, set against a dark grey, trapezoidal background. The background of the entire page on the right side is a blue gradient with a halftone dot pattern.



Nameplate Specifications

Output HP	0.33 Hp	Output KW	0.25 kW
Frequency	60 Hz	Voltage	115/230 V
Current	4.0/2.0 A	Speed	1115 rpm
Service Factor	1	Phase	1
Efficiency	57.5 %	Power Factor	96
Duty	Continuous	Insulation Class	F
Design Code	No Design Code	KVA Code	A
Frame	48YZ	Enclosure	Totally Enclosed Air Over
Thermal Protection	Automatic	Ambient Temperature	40 °C
Drive End Bearing Size	6203	Opp Drive End Bearing Size	6203
UL	Recognized	CSA	Y
CE	N	IP Code	55

Technical Specifications

Electrical Type	Permanent Split Capacitor	Starting Method	Across The Line
Poles	6	Rotation	Selective Clockwise
Resistance Main	14.16 Ohms	Mounting	Round - Extended Studs
Motor Orientation	Horizontal	Drive End Bearing	Ball
Opp Drive End Bearing	Ball	Frame Material	Stainless Steel
Shaft Type	Single Special Extension	Overall Length	11.58 in
Shaft Diameter	0.500 in	Shaft Extension	4.05 in
Assembly/Box Mounting	F1 Only		

This is an uncontrolled document once printed or downloaded and is subject to change without notice. Date Created:04/11/2019

