

PRODUCT INFORMATION PACKET



Model No: 191543.00
Catalog No: 191543.00
0.25 HP Washdown Motor, 1 phase, 1200 RPM, 115/230 V, 48YZ Frame, TEAO
Washdown Pedestal Fan Motors



Regal and Leeson are trademarks of Regal Beloit Corporation or one of its affiliated companies.
©2019 Regal Beloit Corporation, All Rights Reserved. MC017097E





Nameplate Specifications

Output HP	0.25 Hp	Output KW	0.19 kW
Frequency	60 Hz	Voltage	115/230 V
Current	2.6/1.3 A	Speed	1735 rpm
Service Factor	1	Phase	1
Efficiency	59.5 %	Power Factor	99
Duty	Continuous	Insulation Class	F
Design Code	No Design Code	KVA Code	B
Frame	48YZ	Enclosure	Totally Enclosed Air Over
Thermal Protection	Automatic	Ambient Temperature	40 °C
Drive End Bearing Size	6203	Opp Drive End Bearing Size	6203
UL	Recognized	CSA	Y
CE	N	IP Code	55

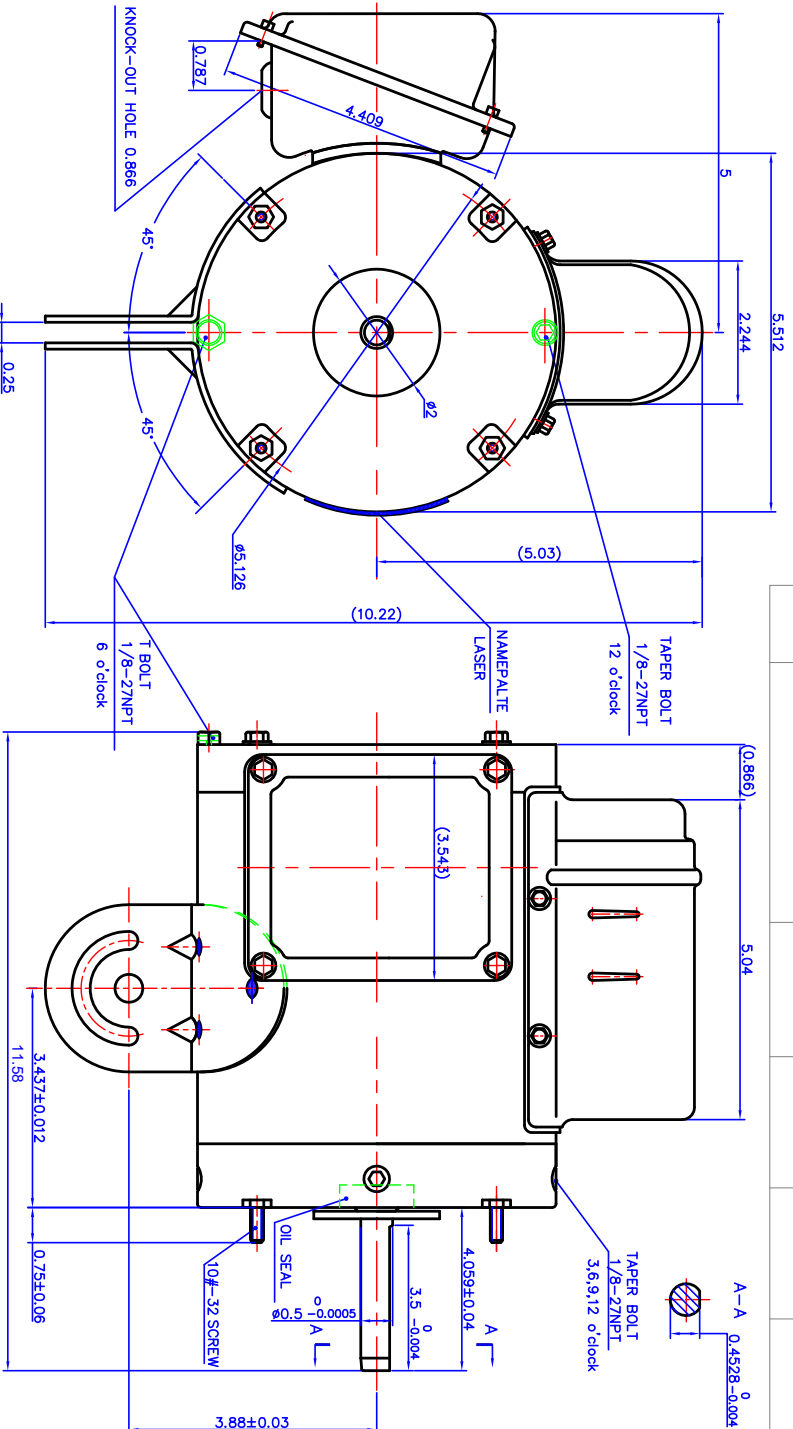
Technical Specifications

Electrical Type	Permanent Split Capacitor	Starting Method	Across The Line
Poles	6	Rotation	Selective Clockwise
Resistance Main	22.59 Ohms	Mounting	Round - Extended Studs
Motor Orientation	Horizontal	Drive End Bearing	Ball
Opp Drive End Bearing	Ball	Frame Material	Stainless Steel
Shaft Type	Single Special Extension	Overall Length	11.58 in
Shaft Diameter	0.500 in	Shaft Extension	4.05 in
Assembly/Box Mounting	F1 Only		

This is an uncontrolled document once printed or downloaded and is subject to change without notice. Date Created:04/11/2019

Uncontrolled Copy

REV	ECCO	REV BY	DATE	APPD	DATE



DR BY:		EDS DATE		DESCRIPTION	Single Phase 48 Stainless Steel Motors	SCALE	1:1.5 <th>SHEET</th> <td> </td>	SHEET	
APPD:		VERSION							

FIRST ANGLE PROJECTION EDS DATE
 CONFIDENTIAL: THIS DRAWING AND ITS INFORMATION ARE THE EXCLUSIVE AND CONFIDENTIAL PROPERTY OF AN AFFILIATE OF REGAL BELCOIT CORPORATION AND ARE NOT TO BE DISCLOSED, DUPLICATED, DISTRIBUTED OR OTHERWISE USED WITHOUT THE WRITTEN CONSENT OF THE AFFILIATE OF REGAL BELCOIT CORPORATION.
 -ALL RIGHTS RESERVED.

SIZE **A3** DWG NO **OL19154300**
 SCALE 1:1.5 SHEET