

# PRODUCT INFORMATION PACKET



Model No: 122412.00  
Catalog No: 122412.00  
1.50 HP Crop Dryer Motor, 1 phase, 3600 RPM, 230 V, 145TZ Frame, TEAO  
Crop Dryer Motors



Regal and Leeson are trademarks of Regal Beloit Corporation or one of its affiliated companies.  
©2019 Regal Beloit Corporation, All Rights Reserved. MC017097E

REGAL



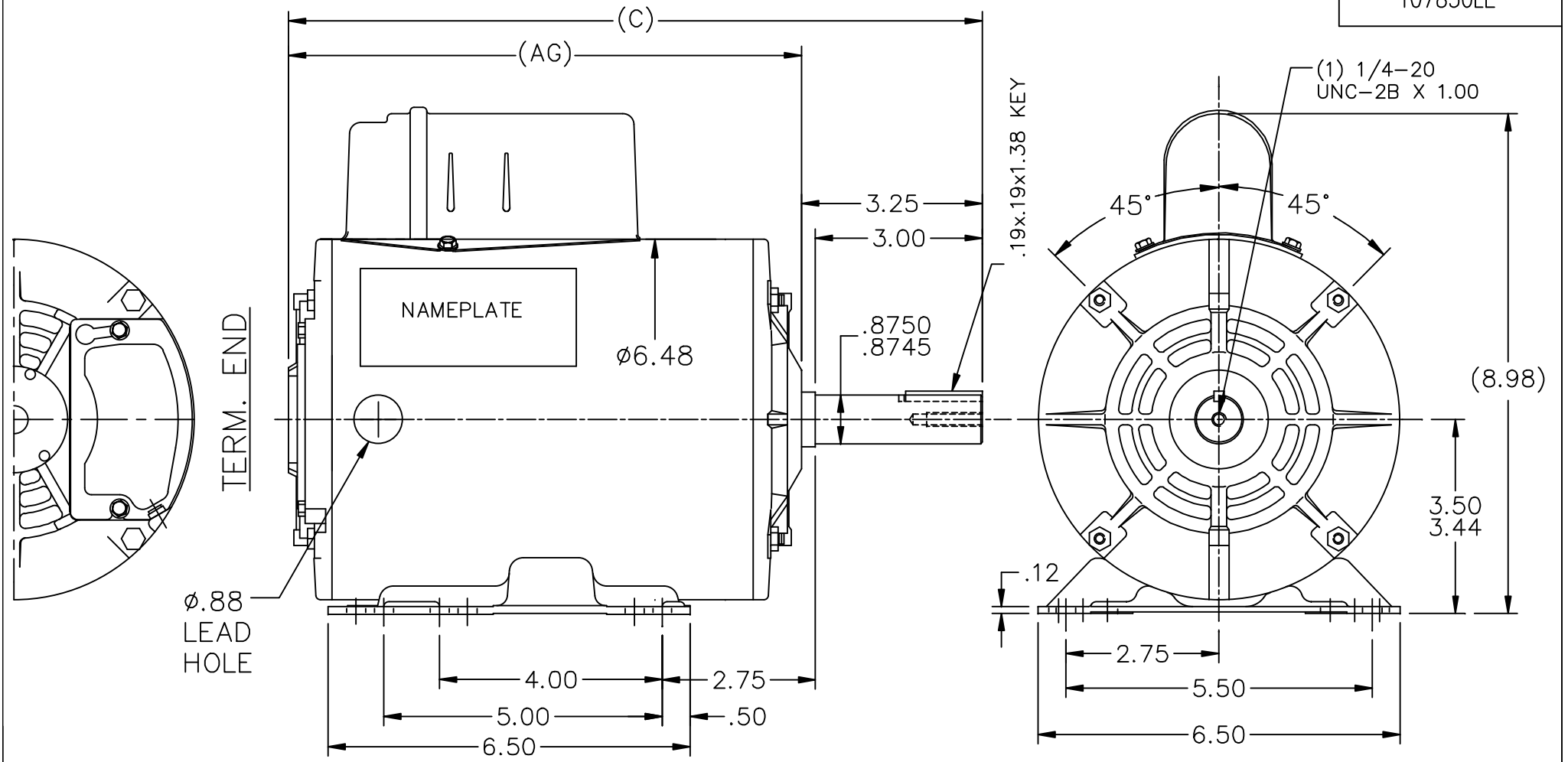
### Nameplate Specifications

Output HP	<b>1.50 Hp</b>	Output KW	<b>1.1 kW</b>
Frequency	<b>60 Hz</b>	Voltage	<b>230 V</b>
Current	<b>8.4 A</b>	Speed	<b>3500 rpm</b>
Service Factor	<b>1</b>	Phase	<b>1</b>
Efficiency	<b>70 %</b>	Power Factor	<b>79</b>
Duty	<b>Continuous</b>	Insulation Class	<b>F</b>
Design Code	<b>NO DESIGN CODE</b>	KVA Code	<b>H</b>
Frame	<b>145TZ</b>	Enclosure	<b>Totally Enclosed Air Over</b>
Thermal Protection	<b>No</b>	Ambient Temperature	<b>40 °C</b>
Drive End Bearing Size	<b>6205</b>	Opp Drive End Bearing Size	<b>6205</b>
UL	<b>Recognized</b>	CSA	<b>Y</b>
CE	<b>N</b>	IP Code	<b>43</b>

### Technical Specifications

Electrical Type	<b>Capacitor Start Induction Run</b>	Starting Method	<b>Across The Line</b>
Poles	<b>2</b>	Rotation	<b>Selective Counterclockwise</b>
Resistance Main	<b>0 Ohms</b>	Mounting	<b>Rigid Base</b>
Motor Orientation	<b>Horizontal</b>	Drive End Bearing	<b>Ball</b>
Opp Drive End Bearing	<b>Ball</b>	Frame Material	<b>Rolled Steel</b>
Shaft Type	<b>Single Special Extension</b>	Overall Length	<b>12.46 in</b>
Frame Length	<b>7.66 in</b>	Shaft Diameter	<b>0.875 in</b>
Shaft Extension	<b>3.25 in</b>	Assembly/Box Mounting	<b>F1 ONLY</b>

This is an uncontrolled document once printed or downloaded and is subject to change without notice. Date Created:01/11/2019

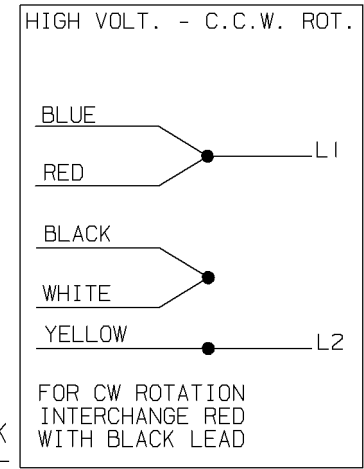
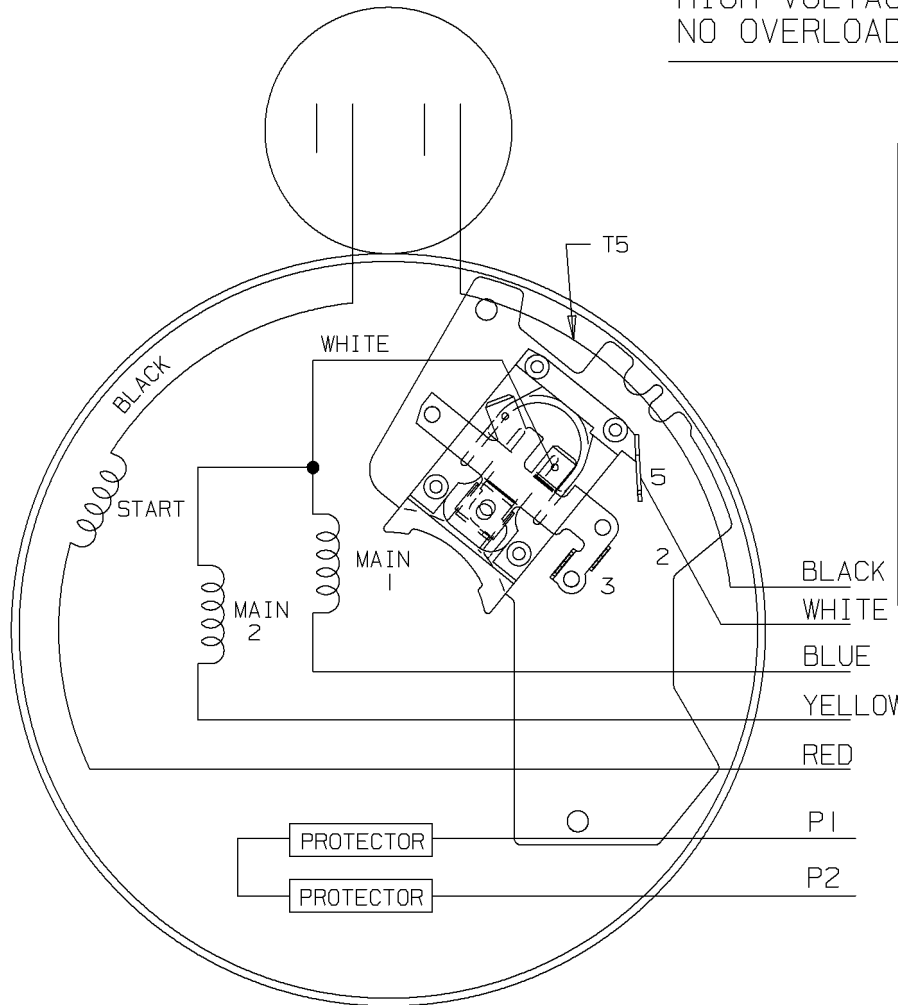
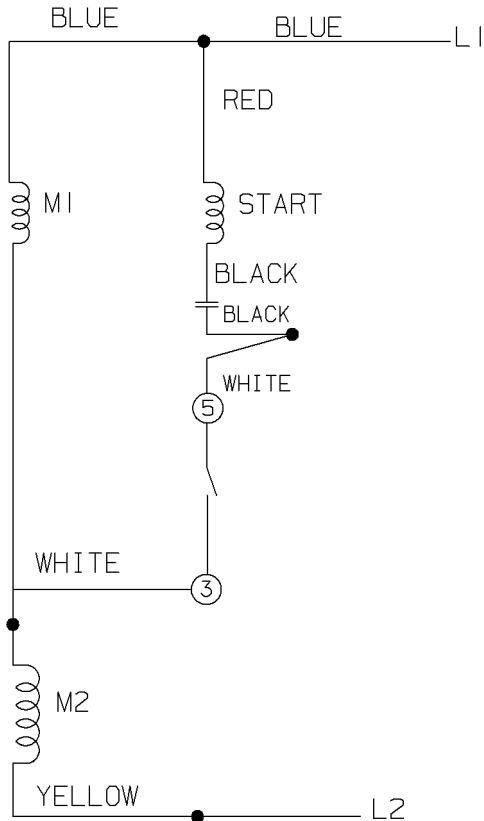


DASH	AG	C
756	9.21	12.46
956	11.21	14.46

				TOLERANCES UNLESS SPECIFIED		<b>LEESON</b>	ELECTRIC MOTORS GEARMOTORS AND DRIVES	DRAWN VS 3/8/2012	
				DEC.	INCHES			CHK	APPD
				.X	±.1	TITLE OUTLINE 140FR. -TEAO-BB		SCALE 3=8	
02 ADD .88 DIA. LEAD HOLE ISAAC 12-4198 LST 8/29/12				.XX	±.03			REF 105335LN	
01 CAP WAS REMOTE & LEADS WERE 30" ISAAC 12-3113 LST 7/10/12				.XXX	±.005	MAT'L.	FMF		
NO.	REVISION	BY & DATE	CHK	ANG	±7'30"	FINISH	PREV OLSPR112638		
THIS DRAWING IN DESIGN AND DETAIL IS OUR PROPERTY AND MUST NOT BE USED EXCEPT IN CONNECTION WITH OUR WORK ALL RIGHTS OF DESIGN AND INVENTION ARE RESERVED THIS IS AN ELECTRONICALLY GENERATED DOCUMENT - DO NOT SCALE THIS PRINT				RFP		CAD FILE 107850LE	SIZE A	DRAWING NO. 107850LE	PAGE OF 02
				DIST	WP				

HIGH VOLTAGE - C.C.W.

HIGH VOLTAGE CAPACITOR START  
NO OVERLOAD SELECT ROTATION



				✓ MAX. SURFACE ROUGHNESS UNLESS NOTED OTHERWISE	UNLESS OTHERWISE SPECIFIED DIMENSIONS ARE IN INCHES TOL. ON XX± .02 XXX± .005 XXXX± .0005 ANGLES± 7'30"			
				MATL SPEC	DRAWN BY B JW 03-06-2000			
				FINISH	CHKD BY ML 03-06-2000			
1	03-07-2000	NEW DRAWING	MU29743	B JW	REFERENCE DRW.	MARATHON ELECTRIC		APPD BY SAT 03-07-2000
				PART NAME CONNECTION DIAGRAM				DRWG NO A- 102005-57T

SHOP BOOK	PURCHASED	DISTRIBUTION - WA - LB - WP - LM - BR	CADD FILE NO.	10200557T
-----------	-----------	---------------------------------------	---------------	-----------