

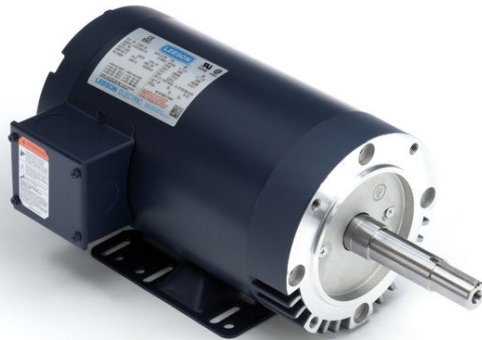
PRODUCT INFORMATION PACKET



Model No: C143T17DK8A

Catalog No: 122115.00

..1HP..1800RPM.143JM.OPEN.230/460V.3.60/50HZ.CONT.40C..RIGID C-FACE.....
JM



Regal and Leeson are trademarks of Regal Beloit Corporation or one of its affiliated companies.

©2018 Regal Beloit Corporation, All Rights Reserved. MC017097E





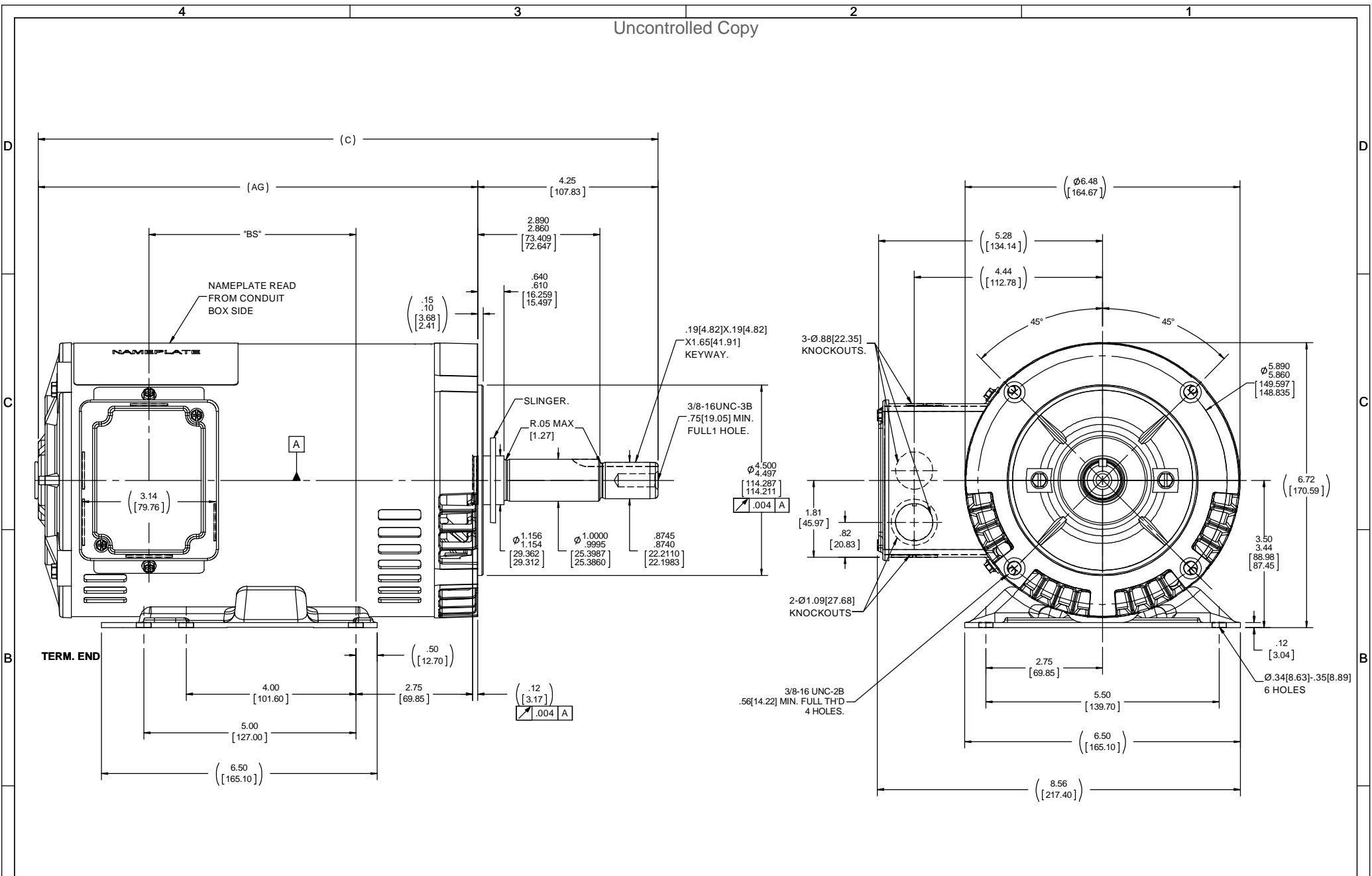
Nameplate Specifications

Output HP	1 Hp	Output KW	0.75 kW
Frequency	60 Hz	Voltage	230/460 V
Current	3.0/1.5 A	Speed	1760 rpm
Service Factor	1.15	Phase	3
Efficiency	85.5 %	Duty	Continuous
Insulation Class	F	Design Code	B
KVA Code	N	Frame	143JM
Enclosure	Drip Proof	Overload Protector	No
Ambient Temperature	40 °C	Drive End Bearing Size	6206
Opp Drive End Bearing Size	6203	UL	Recognized
CSA	Y	CE	N
IP Code	22		

Technical Specifications

Electrical Type	Squirrel Cage Inverter Rated	Starting Method	Line Or Inverter
Poles	4	Rotation	Reversible
Mounting	Rigid base	Motor Orientation	HORIZONTAL
Drive End Bearing	BALL	Opp Drive End Bearing	BALL
Frame Material	Rolled Steel	Shaft Type	JM
Overall Length	15.12 in	Frame Length	9.06 in
Shaft Diameter	0.875 in	Shaft Extension	4.28 in
Assembly/Box Mounting	F1 ONLY		
Outline Drawing	A-100130LE-906	Connection Diagram	A-EE7308-REGAL

This is an uncontrolled document once printed or downloaded and is subject to change without notice. Date Created: 10/15/2018



DASH	"C"	"AG"	"BS"
656	12.61 [320.29]	8.36 [212.34]	2.87 [72.89]
706	13.11 [333.99]	8.86 [225.04]	3.37 [85.59]
756	13.61 [345.69]	9.36 [237.74]	3.87 [98.29]
806	14.11 [358.39]	9.86 [250.44]	4.37 [110.99]
856	14.61 [371.09]	10.36 [263.14]	4.87 [123.69]
906	15.11 [383.79]	10.86 [275.84]	5.37 [136.39]
956	15.61 [396.49]	11.36 [288.54]	5.87 [149.09]

DRAWING REVISION C	REVISION BY A. SUPPANAVAR	DATE 01/02/2018	TOLERANCES UNLESS OTHERWISE SPECIFIED: DEC. INCH mm ANGLE .X ±0.1 [2.5] ±7 30° .XX ±0.03 [0.76] .XXX ±0.005 [0.127] .XXXX ±0.0005 [±0.0127] REMOVE BURRS & BREAK SHARP EDGES: .003/.015 [076/381] X 45° CORNER FILLETS: R.02 [51] MACHINED SURFACES: 200/5.1 INCH/mil mm SHOWN IN (BRACKETS)	DRAWN BY DRS	DATE 08/03/2004	APPROVED BY GK	DATE 08/04/2004	REFERENCE 100130LE	THIRD ANGLE PROJECTION	SIZE C	DRAWING NUMBER 100130LE	SHEET 1 OF 1
ECO DESCRIPTION OUTLINE CONVERSION PROJECT COPYRIGHT REGAL BELOIT AMERICA, INC. ALL RIGHTS RESERVED. PROPRIETARY AND CONFIDENTIAL INFORMATION. THIS DOCUMENT IS THE PROPERTY OF REGAL BELOIT AMERICA, INC. FORMER AND CONTAINS OWNERS PROPRIETARY INFORMATION. ANY PERSON, CORPORATION OR OTHER FIRM RECEIVING IT IS DEEMED BY RECEIVING IT, TO AGREE THAT IT, AND/OR ANY PART OF IT, SHALL NOT BE DISCLOSED TO ANY PERSON, CORPORATION OR OTHER ENTITY, DUPLICATED, AND/OR USED, EXCEPT AS EXPRESSLY APPROVED IN WRITING IN ADVANCE BY OWNER. THIS DOCUMENT SHALL BE RETURNED TO OWNER UPON REQUEST. IT MAY BE SUBJECT TO CERTAIN RESTRICTIONS UNDER APPLICABLE EXPORT CONTROL LAWS AND REGULATIONS.			DESCRIPTION OUTLINE 140 FR.-DR.PR. 3ø - "C" FACE JM EXT.		MATERIAL		PROCESS/FINISH					



NO.		REVISION		BY & DATE		CHK		ANG		FINISH		PREV									
5	CHG TO REGAL LOGO	SL	09/10/2015	AB																	
4	REVISED IEC NOTATIONS	MSG	11/15/2011	CMN	.X	±.1															
3	ADDED IEC NOTATIONS... (U1), (V1) ETC. MU95194	MSG	5/10/2010	MJS	.XX	±.02															
2	ADDED THE OPTIONAL CORD CONNECTION MU46318	RDH	04/24/2003	DRS	.XXX	±.005															
1	REDRAWN	RM	11/20/1990		.XXXX	±.0005															
THIS DRAWING IN DESIGN AND DETAIL IS OUR PROPERTY AND MUST NOT BE USED EXCEPT IN CONNECTION WITH OUR WORK ALL RIGHTS OF DESIGN AND INVENTION ARE RESERVED THIS IS AN ELECTRONICALLY GENERATED DOCUMENT - DO NOT SCALE THIS PRINT										RFP		CAD FILE ee7308		SIZE A		DRAWING NO. EE7308		PAGE 5 OF 5		REV. 5	

REGAL™ Regal Beloit America, Inc.

DRAWN RM 11/20/1990
 CHK ML 11/21/1990
 APPD SAS 04/24/2003

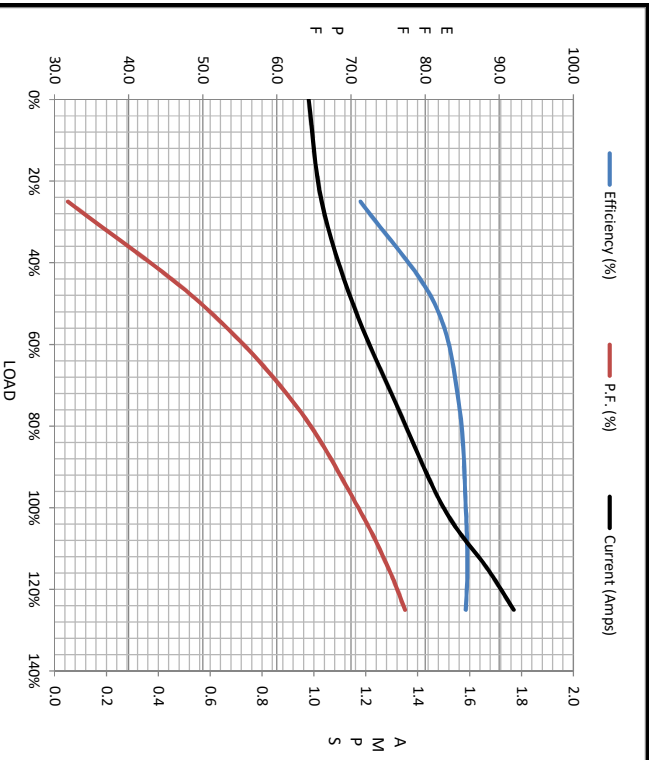
TITLE CONNECTION DIAGRAM
 3Ø - DUAL VOLTAGE MOTOR

SCALE 1=1
 REF
 FMF



Motor Load Data						
Load	0%	25%	50%	75%	100%	LR
Current (Amps)	0.98	1.03	1.15	1.32	1.50	14.5
Torque (ft-lb)	0.00	0.73	1.47	2.22	3.0	11.2
RPM	1800	1790	1781	1772	1760	0
Efficiency (%)		71.3	81.3	84.6	85.5	
P.F. (%)	11.1	31.8	49.8	62.6	71.0	73.4

Motor Speed Data						Information Block																						
LR	Pull-Up	BD	Rated	Idle		HP	Sync. RPM	Frame	Enclosure	Construction	Voltage	Frequency	Design	LR Code letter	Service Factor	Temp Rise @ FL	Duty	Ambient	Elevation	Rotor/Shaft wk ²	Ref Wdg	Sound Pressure @ 1M	VFD Rating	Outline Dwg	Conn. Diag	Additional Specifications:		
LR	120	1285	1760	1800		1.0	1800	143	DP	TDR	230/460#190/380	60	A	N	1.15	21	CONT	40 °C	1,000 feet	Z14259 NONE		56 dbA	CONSTANT 10:1	A-100130LE-906	A-EE7308-REGAL			
Current (Amps)	14.5	13.0	9.8	1.50	0.98																							
Torque (ft-lb)	11.2	10.0	15.4	3.0	0.00																							



R1	R2	X1	X2	Xm
0.0000	0.0000	0.0000	0.0000	0.0000

EQUIV CKT (OHMS / PHASE)

