

PRODUCT INFORMATION PACKET



Model No: 122114.00

Catalog No: 122114.00

2 HP Close-Coupled Pump Motor, 3 phase, 1800 RPM, 230/460 V, 145JPV Frame, TEFC
JP Motors



Regal and Leeson are trademarks of Regal Beloit Corporation or one of its affiliated companies.

©2019 Regal Beloit Corporation, All Rights Reserved. MC017097E

The Regal logo is located in the bottom right corner. It features the word "REGAL" in a white, bold, sans-serif font, set against a dark grey, trapezoidal background. The background of the entire page on the right side is a blue gradient with a halftone dot pattern.



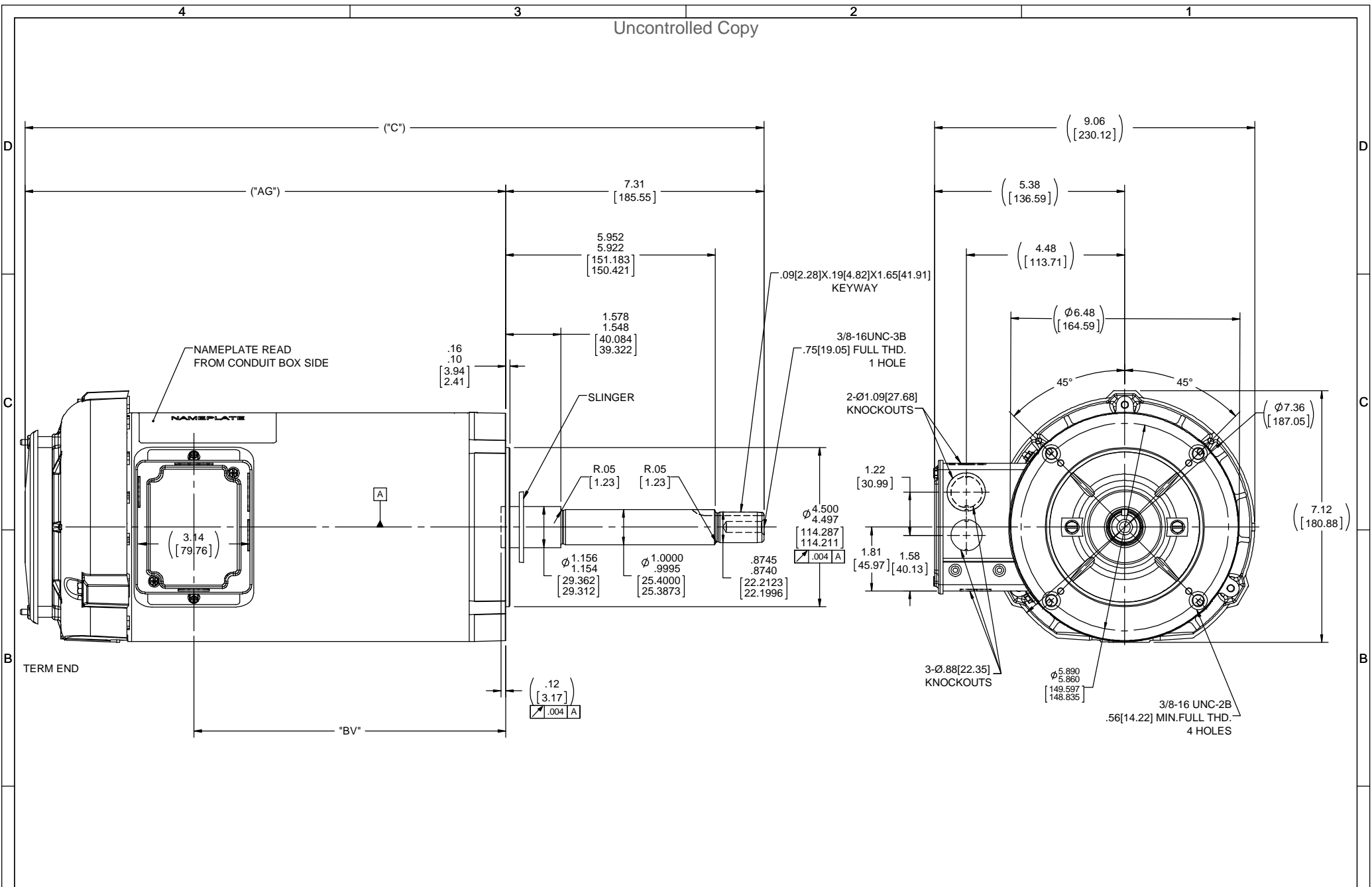
Nameplate Specifications

Output HP	2 Hp	Output KW	1.5 kW
Frequency	60 Hz	Voltage	230/460 V
Current	6.0/3.0 A	Speed	1760 rpm
Service Factor	1.15	Phase	3
Efficiency	86.5 %	Power Factor	71
Duty	Continuous	Insulation Class	F
Design Code	A	KVA Code	N
Frame	145JPV	Enclosure	Totally Enclosed Fan Cooled
Thermal Protection	No	Ambient Temperature	40 °C
Drive End Bearing Size	6206	Opp Drive End Bearing Size	6203
UL	Recognized	CSA	Y
CE	Y	IP Code	43

Technical Specifications

Electrical Type	Squirrel Cage Inverter Rated	Starting Method	Line Or Inverter
Poles	4	Rotation	Reversible
Resistance Main	6.58 Ohms	Mounting	Round
Motor Orientation	Horizontal	Drive End Bearing	Ball
Opp Drive End Bearing	Ball	Frame Material	Rolled Steel
Shaft Type	JP	Overall Length	20.90 in
Frame Length	9.56 in	Shaft Diameter	0.875 in
Shaft Extension	7.31 in	Assembly/Box Mounting	F1 Only

This is an uncontrolled document once printed or downloaded and is subject to change without notice. Date Created:01/11/2019



NOTE:
CONDUIT BOX CAN BE ROTATED 180°.

DASH NO.	"C"	"AG"	"BV"
956	20.90 [530.86]	13.59 [345.18]	8.82 [224.02]

DRAWING REVISION	REVISION BY	DATE	TOLERANCES UNLESS OTHERWISE SPECIFIED:	DRAWN BY
A			DEC. INCH mm ANGLE	A. KEETHA
ECO-0136108	APPROVED BY	DATE	.X ±0.1 [2.5] ±7 30°	DATE 02/27/2018
ECO DESCRIPTION			.XX ±0.02 [0.51]	APPROVED BY PST
OUTLINE CONVERSION PROJECT			.XXX ±0.005 [0.127]	DATE 05/18/2018
			.XXXX ±0.0005 [±0.0127]	REFERENCE 100659
			REMOVE BURRS & BREAK SHARP EDGES: .0031 [0.0762] X 45°	MATERIAL
			CORNER FILLETS: R.02 [51]	PROCESS/FINISH
			MACHINED SURFACES: 200 / 5.1	DESCRIPTION
			mm SHOWN IN (BRACKETS)	OUTLINE
				140 FRAME-1Ø-BB-CFACE-TEFC
				THIRD ANGLE PROJECTION
				SIZE DRAWING NUMBER
				C 108643
				SHEET 1 OF 1

