

PRODUCT INFORMATION PACKET



Model No: C145T17DC46AA

Catalog No: 122101.00

..2HP..1800RPM.145JPV.ODP.230/460V.3.60/50HZ.CONT.40C..C-FACE.....
JP



Regal and Leeson are trademarks of Regal Beloit Corporation or one of its affiliated companies.

©2018 Regal Beloit Corporation, All Rights Reserved. MC017097E





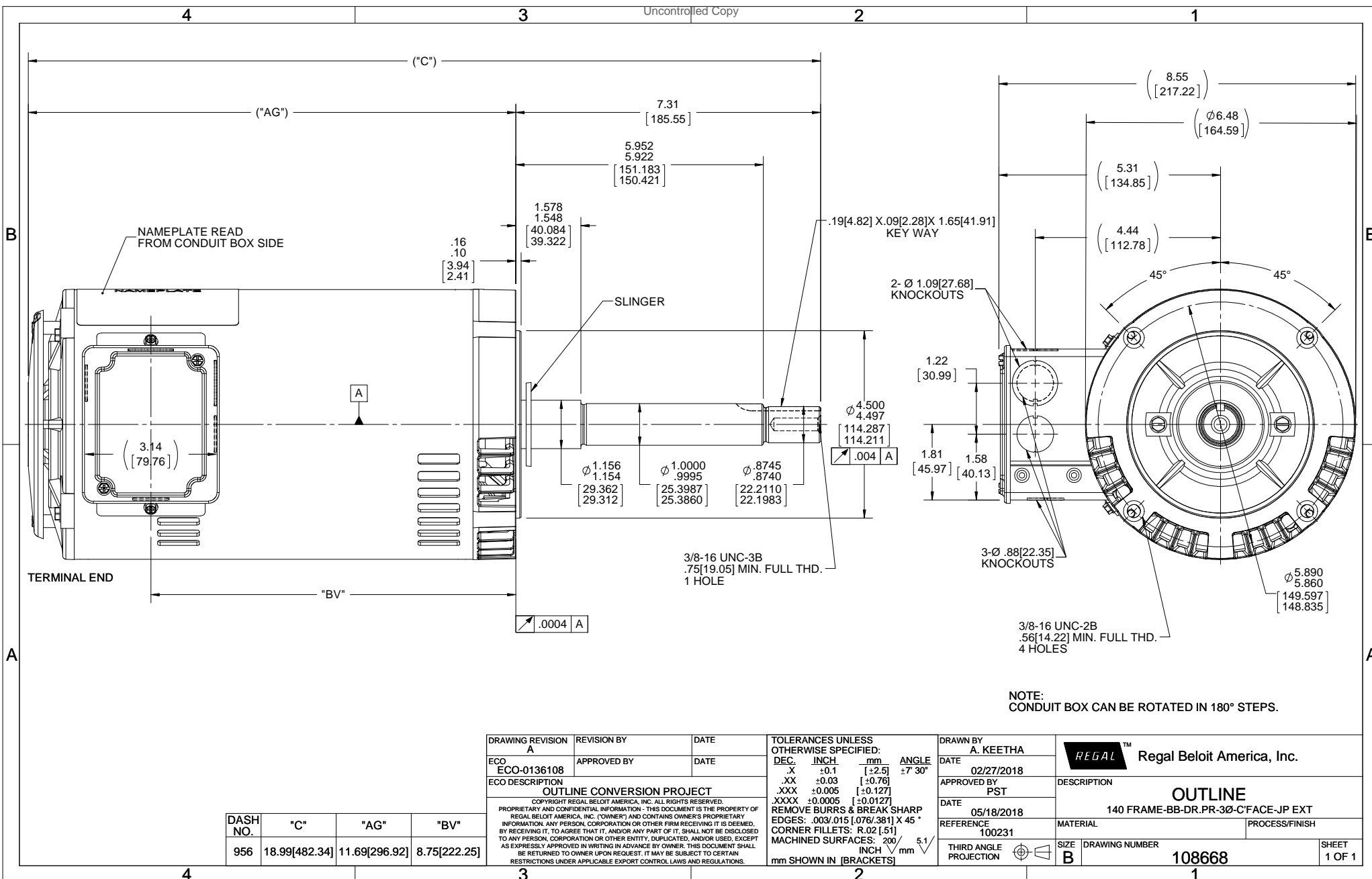
Nameplate Specifications

Output HP	2 Hp	Output KW	1.5 kW
Frequency	60 Hz	Voltage	230/460 V
Current	6.0/3.0 A	Speed	1750 rpm
Service Factor	1.15	Phase	3
Efficiency	86.5 %	Duty	Continuous
Insulation Class	F	Design Code	B
KVA Code	N	Frame	145JPV
Enclosure	Drip Proof	Overload Protector	No
Ambient Temperature	40 °C	Drive End Bearing Size	6206
Opp Drive End Bearing Size	6203	UL	Recognized
CSA	Y	CE	Y
IP Code	22		

Technical Specifications

Electrical Type	Squirrel Cage Inverter Rated	Starting Method	Line Or Inverter
Poles	4	Rotation	Reversible
Mounting	Round	Motor Orientation	HORIZONTAL OR SHAFT DOWN
Drive End Bearing	BALL	Opp Drive End Bearing	BALL
Frame Material	Rolled Steel	Shaft Type	JP
Overall Length	18.98 in	Frame Length	9.56 in
Shaft Diameter	1.000 in	Shaft Extension	7.31 in
Assembly/Box Mounting	F1 ONLY		
Outline Drawing	A-108668-956	Connection Diagram	A-EE7308

This is an uncontrolled document once printed or downloaded and is subject to change without notice. Date Created: 10/15/2018



DASH NO.	"C"	"AG"	"BV"
956	18.99[482.34]	11.69[296.92]	8.75[222.25]

DRAWING REVISION	REVISION BY	DATE	TOLERANCES UNLESS OTHERWISE SPECIFIED:
A	APPROVED BY	DATE	DEC. INCH mm ANGLE
ECO-0136108			.X ±0.1 [+2.5]
ECO DESCRIPTION			
OUTLINE CONVERSION PROJECT			
COPYRIGHT REGAL BELOIT AMERICA, INC. ALL RIGHTS RESERVED.			
PROPRIETARY AND CONFIDENTIAL INFORMATION - THIS DOCUMENT IS THE PROPERTY OF REGAL BELOIT AMERICA, INC. (OWNER) AND CONTAINS OWNER'S PROPRIETARY INFORMATION. ANY PERSON, CORPORATION OR OTHER FIRM RECEIVING IT IS DEEMED, BY RECEIVING IT, TO AGREE THAT IT, AND/OR ANY PART OF IT, SHALL NOT BE DISCLOSED TO ANY PERSON, CORPORATION OR OTHER ENTITY, DUPLICATED, AND/OR USED, EXCEPT AS EXPRESSLY APPROVED IN WRITING IN ADVANCE BY OWNER. THIS DOCUMENT SHALL BE RETURNED TO OWNER UPON REQUEST. IT MAY BE SUBJECT TO CERTAIN RESTRICTIONS UNDER APPLICABLE EXPORT CONTROL LAWS AND REGULATIONS.			
REMOVE BURRS & BREAK SHARP EDGES: .003/.015 [.076/.381] X 45° CORNER FILLETS: R.02 [.51] MACHINED SURFACES: 200 INCH mm 5.1			
mm SHOWN IN [BRACKETS]			

DRAWN BY	DATE	APPROVED BY	DATE	REFERENCE	THIRD ANGLE PROJECTION
A. KEETHA	02/27/2018	PST	05/18/2018	100231	

REGAL™ Regal Beloit America, Inc.		DESCRIPTION		MATERIAL		PROCESS/FINISH	
		OUTLINE					
		140 FRAME-BB-DR.PR-3Ø-C'FACE-JP EXT					
SIZE	DRAWING NUMBER					SHEET	
B	108668					1 OF 1	

