

# PRODUCT INFORMATION PACKET



Model No: C145T17DK26AA

Catalog No: 122100.00

..2..1800.145JP.DP.230/460.3.60/50HZ.CONT.40C..RIGID C-FACE.....  
JP



Regal and Leeson are trademarks of Regal Beloit Corporation or one of its affiliated companies.

©2018 Regal Beloit Corporation, All Rights Reserved. MC017097E

The Regal logo is a grey, trapezoidal shape with the word "REGAL" in white, bold, sans-serif capital letters. A small registered trademark symbol (®) is located at the bottom right of the shape.

REGAL



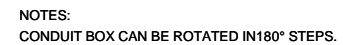
## Nameplate Specifications

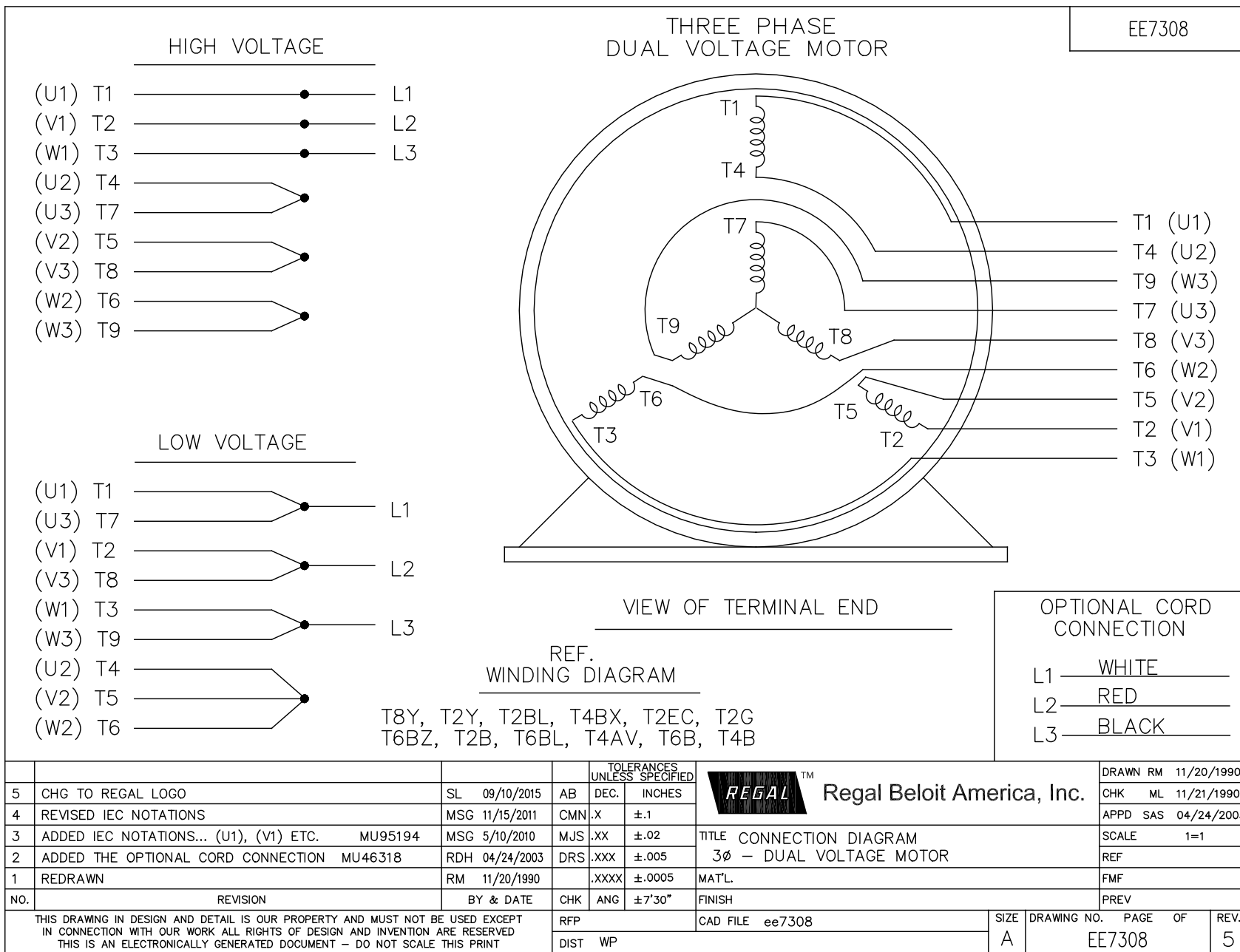
Output HP	2 Hp	Output KW	1.5 kW
Frequency	60 Hz	Voltage	230/460 V
Current	6.0/3.0 A	Speed	1750 rpm
Service Factor	1.15	Phase	3
Efficiency	86.5 %	Duty	Continuous
Insulation Class	F	Design Code	B
KVA Code	N	Frame	145JP
Enclosure	Drip Proof	Overload Protector	No
Ambient Temperature	40 °C	Drive End Bearing Size	6206
Opp Drive End Bearing Size	6203	UL	Recognized
CSA	Y	CE	Y
IP Code	22		

## Technical Specifications

Electrical Type	Squirrel Cage Inverter Rated	Starting Method	Line Or Inverter
Poles	4	Rotation	Reversible
Mounting	Rigid base	Motor Orientation	HORIZONTAL
Drive End Bearing	BALL	Opp Drive End Bearing	BALL
Frame Material	Rolled Steel	Shaft Type	JP
Overall Length	18.68 in	Frame Length	9.56 in
Shaft Diameter	0.875 in	Shaft Extension	7.28 in
Assembly/Box Mounting	F1 ONLY		
Outline Drawing	A-108590-956	Connection Diagram	A-EE7308

**This is an uncontrolled document once printed or downloaded and is subject to change without notice. Date Created: 10/15/2018**

[illegible]



Data Sheet

Date: 1/22/2018

122100.00



Data @ 460 V

Motor Load Data

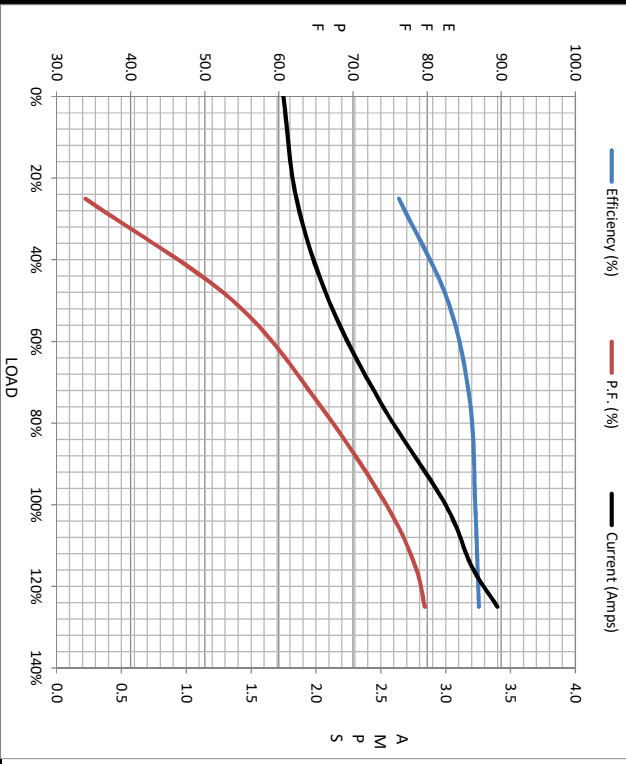
Load	0%	25%	50%	75%	100%	115%	125%	LR
Current (Amps)	1.75	1.85	2.10	2.50	3.0	3.2	3.4	28.4
Torque (ft-lb)	0.00	1.50	2.95	4.5	6.0	7.0	7.6	24.1
RPM	1800	1789	1778	1765	1750	1,745	1740	0
Efficiency (%)		76.2	82.8	85.8	86.5	86.8	87.0	
P.F. (%)	7.9	33.9	53.8	65.3	74.5	78.4	79.7	71.5

Motor Speed Data

	LR	Pull-Up	BD	Rated	Idle
Speed (RPM)	0	125	1220	1750	1800
Current (Amps)	28.4	25.5	17.6	3.0	1.75
Torque (ft-lb)		22.0	30.7	6.0	0.00

Information Block

HP	2.0
Sync. RPM	1800
Frame	56
Enclosure	DP
Construction	TDR
Voltage	230/460#190/380
Frequency	60
Design	A
LR Code letter	N
Service Factor	1.15
Temp Rise @ FL	38
Duty	CONT
Ambient	40
Elevation	1,000
Rotor/Shaft wk²	0.09
Ref Wdg	Z14260 NONE
Sound Pressure @ 1M	56
VFD Rating	CONSTANT 2:1
Outline Dwg	A-100132-956
Conn. Diag	A-EE7308
Additional Specifications:	
0	
0	
EQUIV CKT (OHMS / PHASE)	
R1	R2
4.1180	3.2660
	6.2480
	5.6800
	163.3000



Speed -Torque Curve

