

# PRODUCT INFORMATION PACKET



Model No: C143T34DK6AA  
Catalog No: 122095.00  
..1.5..3600.143JP.DP.230/460.3.60/50HZ.CONT.40C..RIGID C-FACE.....  
JP



Regal and Leeson are trademarks of Regal Beloit Corporation or one of its affiliated companies.  
©2018 Regal Beloit Corporation, All Rights Reserved. MC017097E





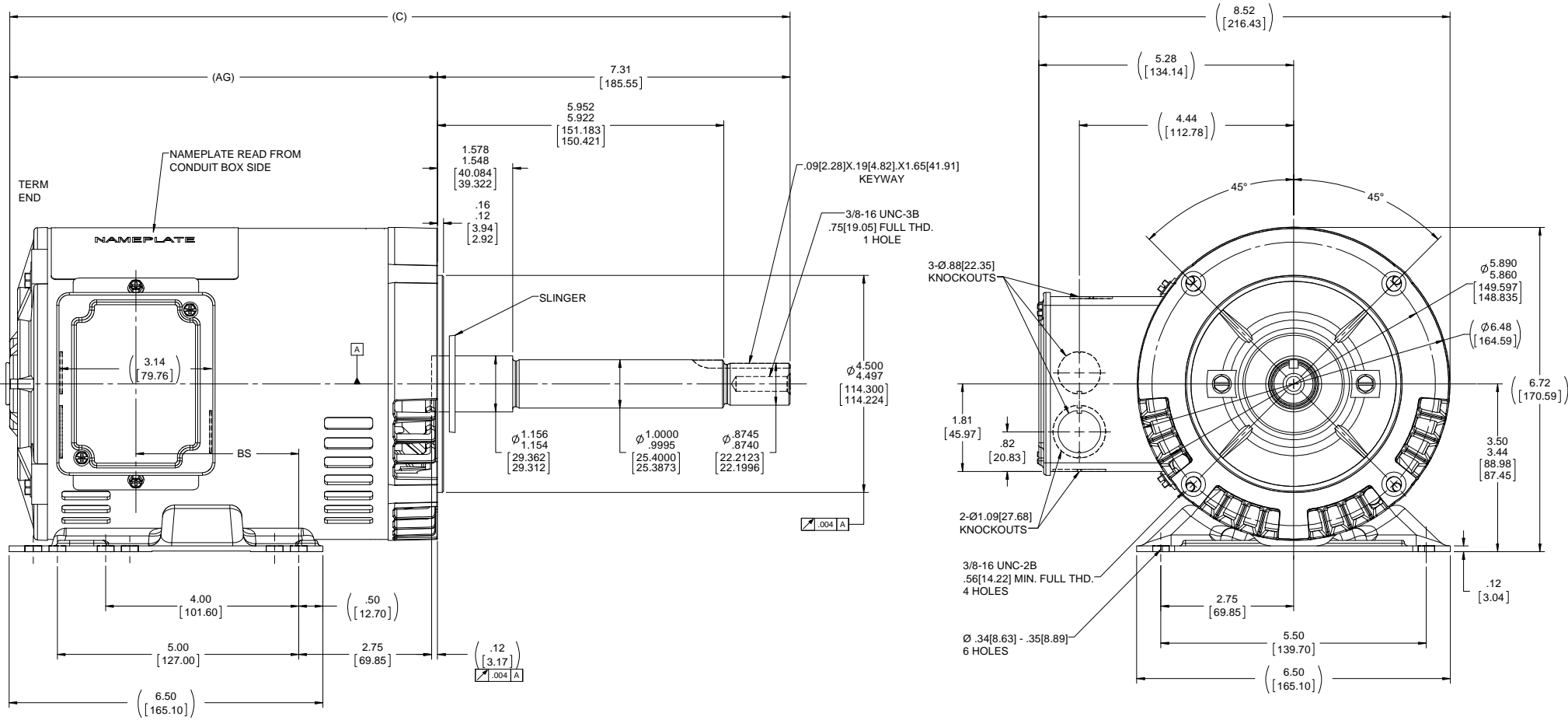
### Nameplate Specifications

|                            |            |                        |            |
|----------------------------|------------|------------------------|------------|
| Output HP                  | 1.50 Hp    | Output KW              | 1.1 kW     |
| Frequency                  | 60 Hz      | Voltage                | 230/460 V  |
| Current                    | 3.8/1.9 A  | Speed                  | 3515 rpm   |
| Service Factor             | 1.15       | Phase                  | 3          |
| Efficiency                 | 86.5 %     | Duty                   | Continuous |
| Insulation Class           | F          | Design Code            | B          |
| KVA Code                   | L          | Frame                  | 143JP      |
| Enclosure                  | Drip Proof | Overload Protector     | No         |
| Ambient Temperature        | 40 °C      | Drive End Bearing Size | 6206       |
| Opp Drive End Bearing Size | 6203       | UL                     | Recognized |
| CSA                        | Y          | CE                     | N          |
| IP Code                    | 22         |                        |            |

### Technical Specifications

|                       |                              |                       |                  |
|-----------------------|------------------------------|-----------------------|------------------|
| Electrical Type       | Squirrel Cage Inverter Rated | Starting Method       | Line Or Inverter |
| Poles                 | 2                            | Rotation              | Reversible       |
| Mounting              | Rigid base                   | Motor Orientation     | HORIZONTAL       |
| Drive End Bearing     | BALL                         | Opp Drive End Bearing | BALL             |
| Frame Material        | Rolled Steel                 | Shaft Type            | JP               |
| Overall Length        | 17.68 in                     | Frame Length          | 8.56 in          |
| Shaft Diameter        | 0.875 in                     | Shaft Extension       | 7.34 in          |
| Assembly/Box Mounting | F1 ONLY                      |                       |                  |
| Outline Drawing       | A-100132-856                 | Connection Diagram    | A-EE7308         |

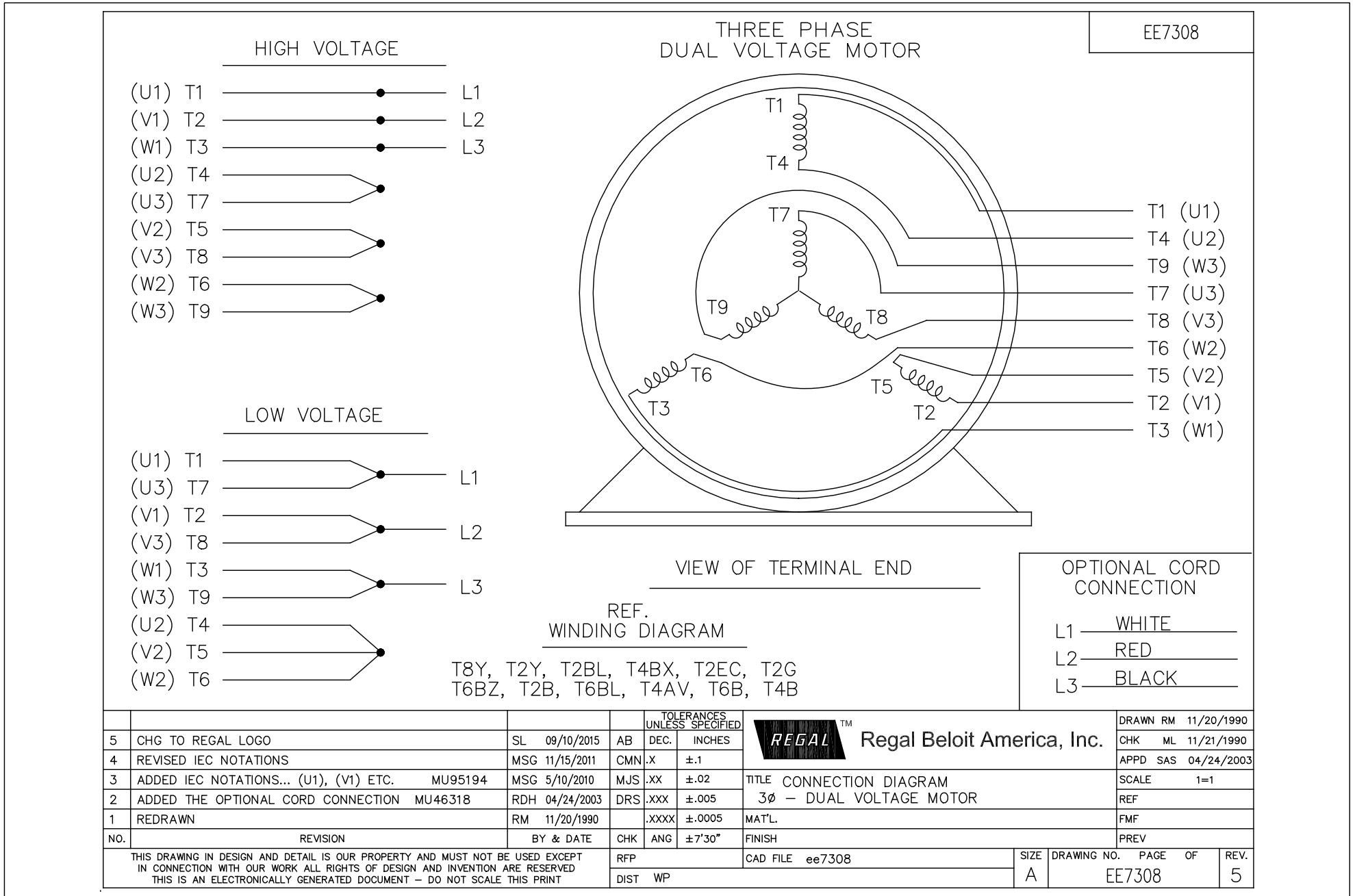
This is an uncontrolled document once printed or downloaded and is subject to change without notice. Date Created: 10/15/2018



| DASH NO. | "C"           | "AG"          | "BS"         |
|----------|---------------|---------------|--------------|
| 706      | 16.17[410.71] | 8.87[225.29]  | 3.37[85.59]  |
| 756      | 16.67[423.41] | 9.37[237.99]  | 3.87[98.29]  |
| 806      | 17.17[436.11] | 9.87[250.69]  | 4.37[110.99] |
| 856      | 17.67[448.81] | 10.37[263.39] | 4.87[123.69] |
| 906      | 18.17[461.51] | 10.87[276.09] | 5.37[136.39] |

NOTES:  
CONDUIT BOX CAN BE ROTATED IN 180° STEPS.

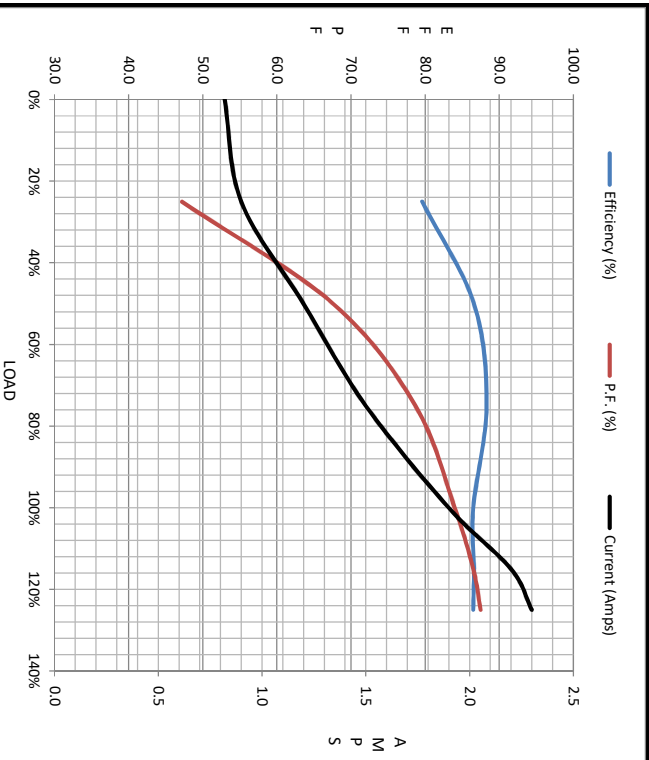
|   |                          |                    |   |                            |                    |                          |  |
|---|--------------------------|--------------------|---|----------------------------|--------------------|--------------------------|--|
| DRAWING REVISION<br>ECO-0143026                 | REVISION BY<br>A. KEETHA | DATE<br>12/29/2017 | TOLERANCES UNLESS OTHERWISE SPECIFIED:<br>FRACTIONS: .001, .002, .003, .005, .010, .015, .020, .030, .040, .050, .060, .070, .080, .090, .100, .125, .150, .175, .200, .250, .300, .350, .400, .450, .500, .600, .700, .800, .900, 1.000, 1.250, 1.500, 2.000, 2.500, 3.000, 4.000, 5.000, 6.000, 8.000, 10.000, 12.500, 15.000, 20.000, 25.000, 30.000, 40.000, 50.000, 60.000, 80.000, 100.000, 125.000, 150.000, 200.000, 250.000, 300.000, 400.000, 500.000, 600.000, 800.000, 1000.000 | DRAWN BY<br>BRH            | DATE<br>11/02/1995 | APPROVED BY<br>GK        | DESCRIPTION<br>140 FR.-BB-DR-PR-.38-C-FACE-3P-EXT. |
| OUTLINE CONVERSION PROJECT                      |                          |                    | REGAL BELLOI AMERICA, INC.  | Regal Beloit America, Inc. |                    |                          |  |
| MATERIAL<br>140 FR.-BB-DR-PR-.38-C-FACE-3P-EXT. |                          |                    | PROCESS/FINISH  | THIRD ANGLE PROJECTION     | SIZE<br>D          | DRAWING NUMBER<br>100132 |  |
|   |                          |                    |   |                            |                    | SHEET<br>1 OF 1          |  |





| Motor Load Data |      |      |      |      |      |      |      |      |
|-----------------|------|------|------|------|------|------|------|------|
| Load            | 0%   | 25%  | 50%  | 75%  | 100% | 115% | 125% | LR   |
| Current (Amps)  | 0.82 | 0.90 | 1.20 | 1.50 | 1.90 | 2.20 | 2.30 | 18.6 |
| Torque (ft-lb)  | 0.00 | 0.55 | 1.10 | 1.68 | 2.25 | 2.60 | 2.80 | 6.8  |
| RPM             | 3600 | 3580 | 3560 | 3540 | 3515 | 3505 | 3495 | 0    |
| Efficiency (%)  |      |      |      |      |      |      |      |      |
| P.F. (%)        | 14.3 | 47.2 | 67.6 | 78.7 | 84.0 | 86.5 | 87.5 | 62.5 |

| Motor Speed Data |      |         |      |       |      | Information Block |           |       |           |              |                 |           |        |                |                |                |      |         |            |                             |         |                     |              |              |            |                            |  |
|------------------|------|---------|------|-------|------|-------------------|-----------|-------|-----------|--------------|-----------------|-----------|--------|----------------|----------------|----------------|------|---------|------------|-----------------------------|---------|---------------------|--------------|--------------|------------|----------------------------|--|
| Speed (RPM)      | LR   | Pull-Up | BD   | Rated | Idle | HP                | Sync. RPM | Frame | Enclosure | Construction | Voltage         | Frequency | Design | LR Code letter | Service Factor | Temp Rise @ FL | Duty | Ambient | Elevation  | Rotor/Shaft wk <sup>2</sup> | Ref Wdg | Sound Pressure @ 1M | VFD Rating   | Outline Dwg  | Conn. Diag | Additional Specifications: |  |
| 0                |      | 215     | 2700 | 3515  | 3600 | 1.5               | 3600      | 143   | DP        | TDR          | 230/460#190/380 | 60        | A      | L              | 1.15           | 20             | CONT | 40 °C   | 1,000 feet | Z12168 DR                   |         | 68                  | CONSTANT 2:1 | A-100132-856 | A-EE7308   |                            |  |
| Current (Amps)   | 18.6 | 18.7    | 11.7 | 1.90  | 0.82 |                   |           |       |           |              |                 |           |        |                |                |                |      |         |            |                             |         |                     |              |              |            |                            |  |
| Torque (ft-lb)   | 6.8  | 5.7     | 10.0 | 2.25  | 0.00 |                   |           |       |           |              |                 |           |        |                |                |                |      |         |            |                             |         |                     |              |              |            |                            |  |



| EQUIV CKT (OHMS / PHASE) |        |        |          |
|--------------------------|--------|--------|----------|
| R1                       | R2     | X1     | Xm       |
| 5.2950                   | 3.7820 | 9.2650 | 9.4550   |
|                          |        |        | 359.2900 |

