

PRODUCT INFORMATION PACKET



Model No: C145T34FC42AA

Catalog No: 122090.00

..2HP..3600RPM.145JMV.TEFC.230/460V.3PH.60HZ.CONT.40C..C FACE.....JM PUMP.....
JM



Regal and Leeson are trademarks of Regal Beloit Corporation or one of its affiliated companies.

©2018 Regal Beloit Corporation, All Rights Reserved. MC017097E





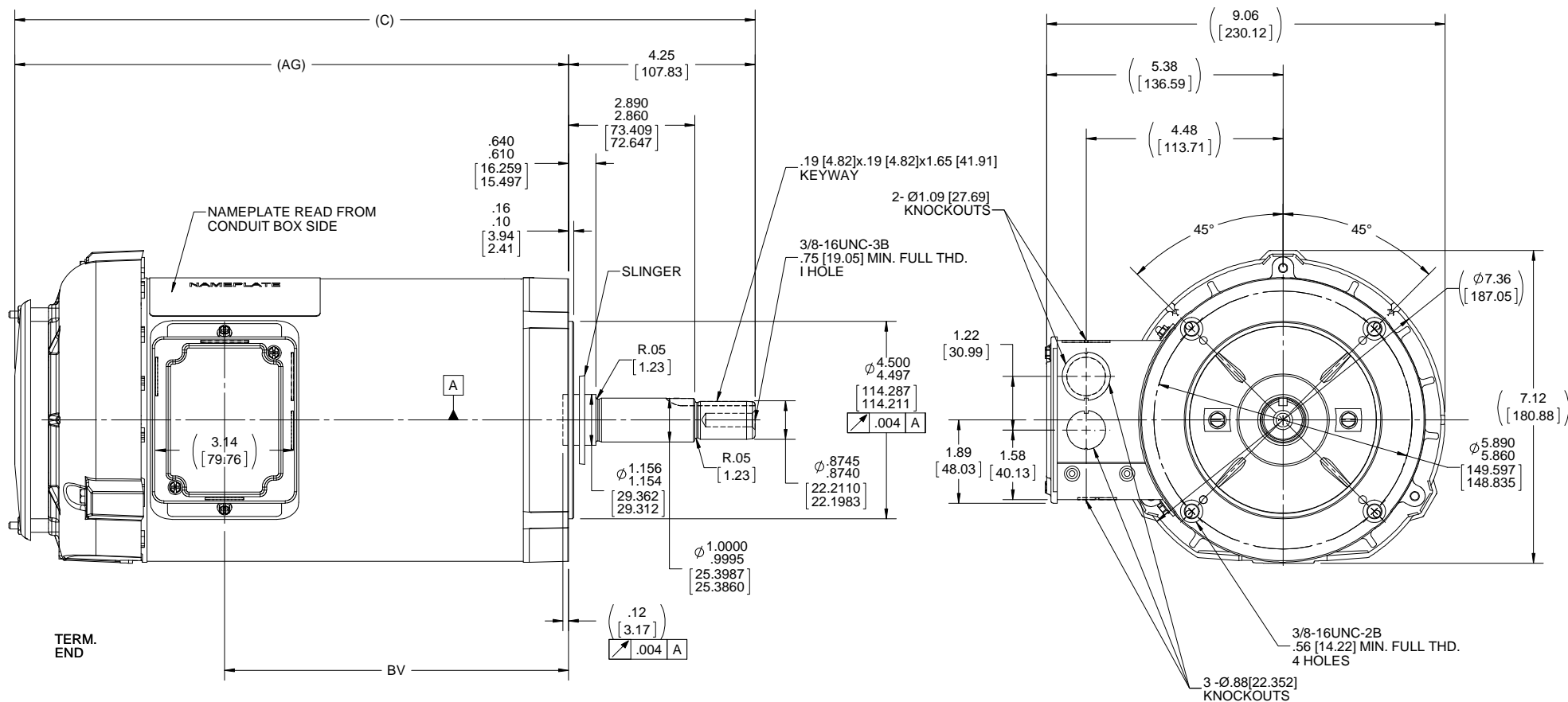
Nameplate Specifications

Output HP	2 Hp	Output KW	1.5 kW
Frequency	60 Hz	Voltage	230/460 V
Current	5.0/2.5 A	Speed	3500 rpm
Service Factor	1.15	Phase	3
Efficiency	85.5 %	Duty	Continuous
Insulation Class	F	Design Code	B
KVA Code	K	Frame	145JMV
Enclosure	Totally Enclosed Fan Cooled	Overload Protector	No
Ambient Temperature	40 °C	Drive End Bearing Size	6206
Opp Drive End Bearing Size	6203	UL	Recognized
CSA	Y	CE	Y
IP Code	43		

Technical Specifications

Electrical Type	Squirrel Cage Inverter Rated	Starting Method	Line Or Inverter
Poles	2	Rotation	Reversible
Mounting	Round	Motor Orientation	HORIZONTAL OR SHAFT DOWN
Drive End Bearing	BALL	Opp Drive End Bearing	BALL
Frame Material	Rolled Steel	Shaft Type	JM
Overall Length	17.29 in	Frame Length	9.06 in
Shaft Diameter	0.875 in	Shaft Extension	4.21 in
Assembly/Box Mounting	F1 ONLY		
Outline Drawing	B-100522-906	Connection Diagram	A-EE7308

This is an uncontrolled document once printed or downloaded and is subject to change without notice. Date Created: 10/15/2018



NOTES:
1.CONDUIT BOX CAN BE ROTATED IN 180° STEPS.

DASH	C	AG	BV	DRAWING REVISION E	REVISION BY H. ADIKE	DATE 01-29-2018	TOLERANCES UNLESS OTHERWISE SPECIFIED: DEC. INCH mm ANGLE .X ±0.1 ±2.5 ±7° 30' .XX ±0.03 ±0.76 .XXX ±0.005 ±0.127 .XXXX ±0.0005 ±0.0127 REMOVE BURRS & BREAK SHARP EDGES: .003/.015 [.076/.381] X 45° CORNER FILLETS: R.02 [.51] MACHINED SURFACES: 200 INCH mm 5.1 mm SHOWN IN [BRACKETS]	DRAWN BY RM	Regal Beloit America, Inc.	
656	14.84 [376.94]	10.59 [268.99]	5.82 [147.83]	ECO ECO-0143026	APPROVED BY PST	DATE 2-5-2018	DATE 09-12-1991	APPROVED BY MS		DESCRIPTION OUTLINE 140 FR. -BB - TEFC - C'FACE
706	15.34 [389.64]	11.09 [281.69]	6.32 [160.53]	ECO DESCRIPTION OUTLINE CONVERSION PROJECT COPYRIGHT REGAL BELOIT AMERICA, INC. ALL RIGHTS RESERVED. PROPRIETARY AND CONFIDENTIAL INFORMATION - THIS DOCUMENT IS THE PROPERTY OF REGAL BELOIT AMERICA, INC. (OWNER) AND CONTAINS OWNER'S PROPRIETARY INFORMATION. ANY PERSON, CORPORATION OR OTHER FIRM RECEIVING IT IS DEEMED, BY RECEIVING IT, TO AGREE THAT IT, AND/OR ANY PART OF IT, SHALL NOT BE DISCLOSED TO ANY PERSON, CORPORATION OR OTHER ENTITY, DUPLICATED, AND/OR USED, EXCEPT AS EXPRESSLY APPROVED IN WRITING IN ADVANCE BY OWNER. THIS DOCUMENT SHALL BE RETURNED TO OWNER UPON REQUEST. IT MAY BE SUBJECT TO CERTAIN RESTRICTIONS UNDER APPLICABLE EXPORT CONTROL LAWS AND REGULATIONS.				DATE 09-19-1991	MATERIAL	PROCESS/FINISH
756	15.84 [402.94]	11.59 [294.39]	6.82 [173.23]					REFERENCE 100522	DRAWING NUMBER 100522	SHEET 1 OF 1
806	16.34 [415.04]	12.09 [307.09]	7.32 [185.93]					THIRD ANGLE PROJECTION		
856	16.84 [427.74]	12.59 [319.79]	7.82 [198.63]							
906	17.34 [440.44]	13.09 [332.49]	8.32 [211.33]							

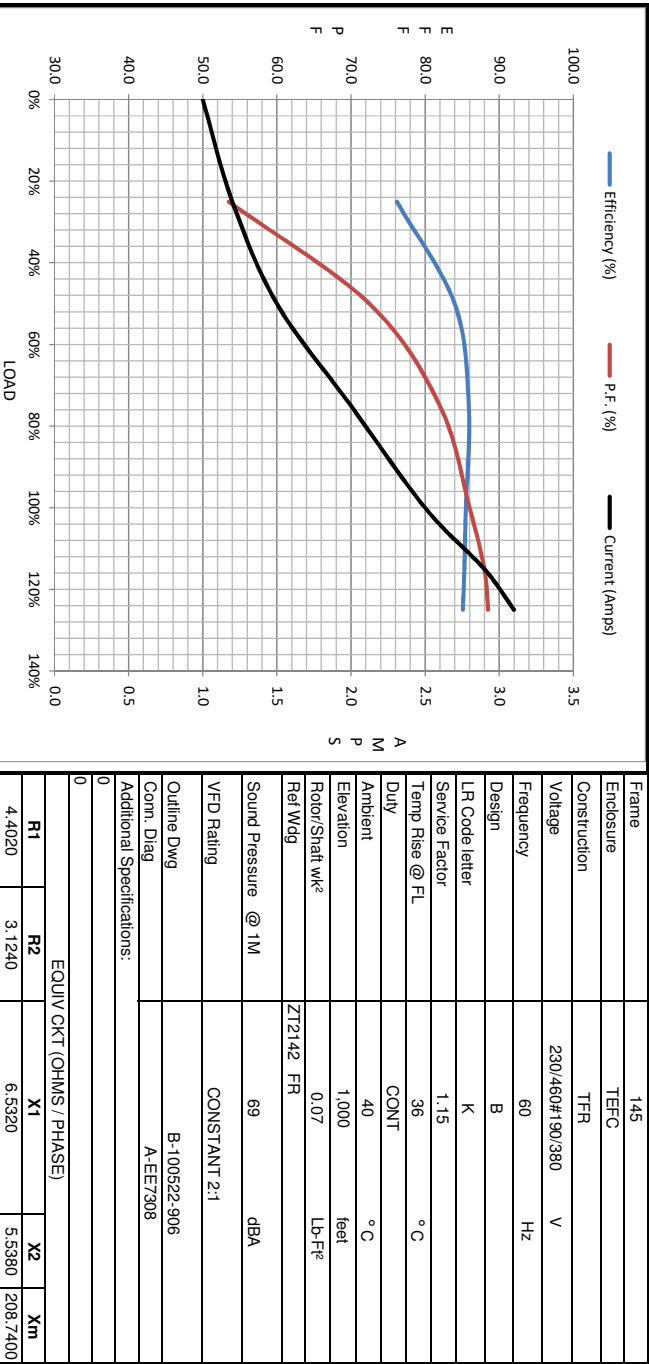


NO.		REVISION		BY & DATE		TOLERANCES UNLESS SPECIFIED		RFP	CAD FILE ee7308	SIZE	DRAWING NO.	PAGE OF	REV.
						DEC.	INCHES						
5	CHG TO REGAL LOGO	SL	09/10/2015	AB									
4	REVISED IEC NOTATIONS	MSG	11/15/2011	CMN	.X	±.1							
3	ADDED IEC NOTATIONS... (U1), (V1) ETC. MU95194	MSG	5/10/2010	MJS	.XX	±.02							
2	ADDED THE OPTIONAL CORD CONNECTION MU46318	RDH	04/24/2003	DRS	.XXX	±.005							
1	REDRAWN	RM	11/20/1990		.XXXX	±.0005							
					ANG	±7'30"							
Regal Beloit America, Inc.								DRAWN RM 11/20/1990 CHK ML 11/21/1990 APPD SAS 04/24/2003		TITLE CONNECTION DIAGRAM 3Ø - DUAL VOLTAGE MOTOR			SCALE 1=1
								MATERIAL		FINISH			REF
THIS DRAWING IN DESIGN AND DETAIL IS OUR PROPERTY AND MUST NOT BE USED EXCEPT IN CONNECTION WITH OUR WORK ALL RIGHTS OF DESIGN AND INVENTION ARE RESERVED THIS IS AN ELECTRONICALLY GENERATED DOCUMENT - DO NOT SCALE THIS PRINT								DIST WP		A	EE7308	5	



Motor Load Data								
Load	0%	25%	50%	75%	100%	115%	125%	LR
Current (Amps)	1.00	1.20	1.50	2.00	2.50	2.90	3.1	21.7
Torque (ft-lb)	0.00	0.74	1.48	2.23	3.0	3.5	3.8	9.5
RPM	3600	3575	3550	3525	3500	3485	3470	0
Efficiency (%)		76.2	84.0	85.9	85.5	85.3	85.1	
P.F. (%)	20.0	53.5	72.5	82.0	86.0	88.0	88.5	42.0

Motor Speed Data						Information Block																					
	LR	Pull-Up	BD	Rated	Idle	HP	Sync. RPM	Frame	Enclosure	Construction	Voltage	Frequency	Design	LR Code letter	Service Factor	Temp Rise @ FL	Duty	Ambient	Elevation	Rotor/Shaft wk ²	Ref Wdg	Sound Pressure @ 1M	VFD Rating	Outline Dwg	Conn. Diag	Additional Specifications:	
Speed (RPM)	0	1500	2615	3500	3600	2.0	3600	145	TEFC	TFR	230/460#190/380	60	B	K	1.15	36	CONT	40 °C	1,000	0.07	Z12142 FR	69	CONSTANT 2:1	B-100522-906	A-EE7308		
Current (Amps)	21.7	20.5	14.5	2.50	1.00																						
Torque (ft-lb)	9.5	9.4	12.2	3.0	0.00																						



EQUIV CKT (OHMS / PHASE)			
R1	R2	X1	Xm
4.4020	3.1240	6.5320	5.5380
			208/7400

