

# PRODUCT INFORMATION PACKET



Model No: C145T34DK17A

Catalog No: 122081.00

..3..3600.145JM.OPEN.230/460V.3.60/50HZ.CONT.40C..RIGID C-FACE.....  
JM



Regal and Leeson are trademarks of Regal Beloit Corporation or one of its affiliated companies.

©2018 Regal Beloit Corporation, All Rights Reserved. MC017097E





### Nameplate Specifications

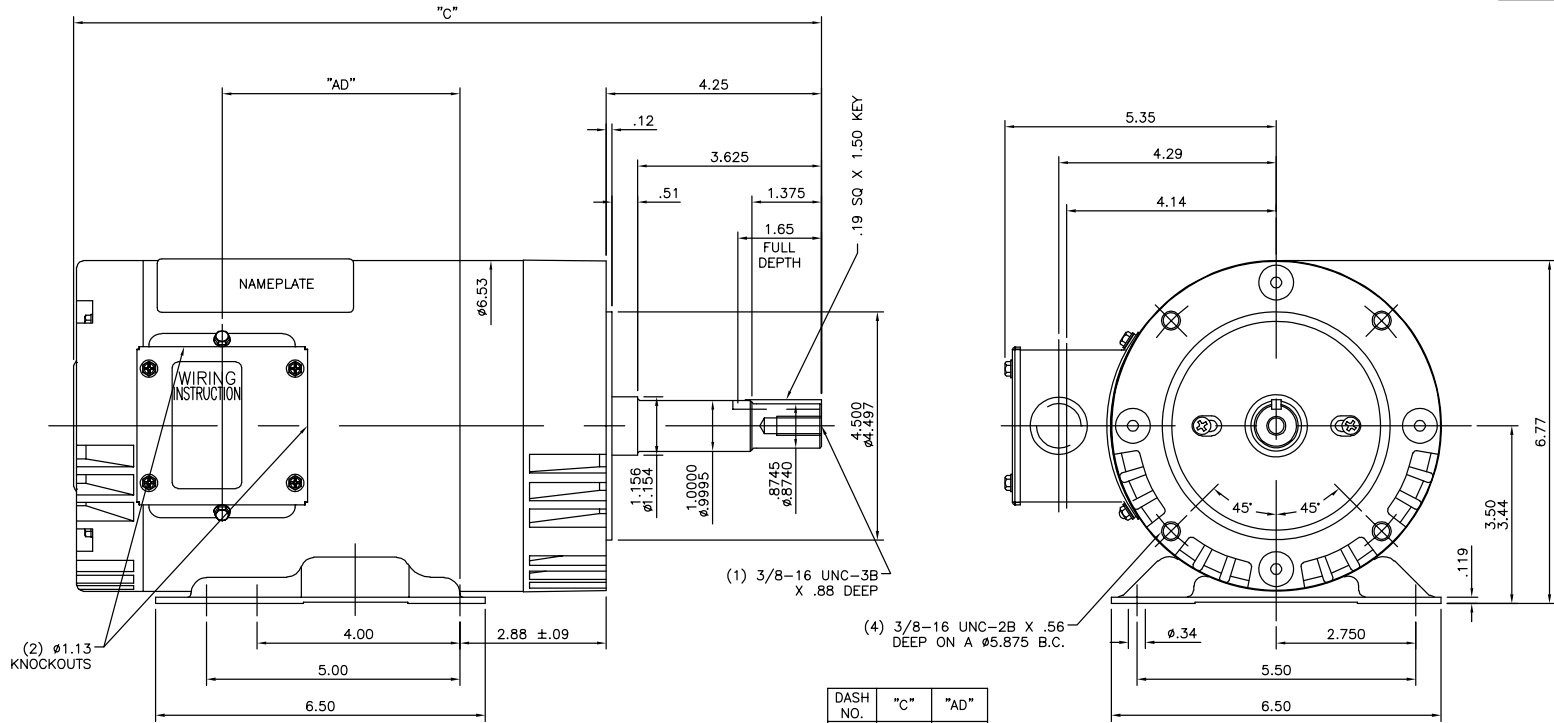
Output HP	<b>3 Hp</b>	Output KW	<b>2.2 kW</b>
Frequency	<b>60 Hz</b>	Voltage	<b>230/460 V</b>
Current	<b>7.2/3.6 A</b>	Speed	<b>3490 rpm</b>
Service Factor	<b>1.15</b>	Phase	<b>3</b>
Efficiency	<b>86.5 %</b>	Duty	<b>Continuous</b>
Insulation Class	<b>F</b>	Design Code	<b>B</b>
KVA Code	<b>K</b>	Frame	<b>145JM</b>
Enclosure	<b>Drip Proof</b>	Overload Protector	<b>No</b>
Ambient Temperature	<b>40 °C</b>	Drive End Bearing Size	<b>6206</b>
Opp Drive End Bearing Size	<b>6203</b>	UL	<b>Recognized</b>
CSA	<b>Y</b>	CE	<b>Y</b>
IP Code	<b>22</b>		

### Technical Specifications

Electrical Type	<b>Squirrel Cage Inverter Rated</b>	Starting Method	<b>Line Or Inverter</b>
Poles	<b>2</b>	Rotation	<b>Reversible</b>
Mounting	<b>Rigid base</b>	Motor Orientation	<b>HORIZONTAL</b>
Drive End Bearing	<b>BALL</b>	Opp Drive End Bearing	<b>BALL</b>
Frame Material	<b>Rolled Steel</b>	Shaft Type	<b>JM</b>
Overall Length	<b>15.50 in</b>	Frame Length	<b>8.25 in</b>
Shaft Diameter	<b>0.875 in</b>	Shaft Extension	<b>4.21 in</b>
Assembly/Box Mounting	<b>F1 ONLY</b>		
Outline Drawing	<b>607-0208-825</b>	Connection Diagram	<b>005010.01</b>

**This is an uncontrolled document once printed or downloaded and is subject to change without notice. Date Created: 10/15/2018**

607-0208



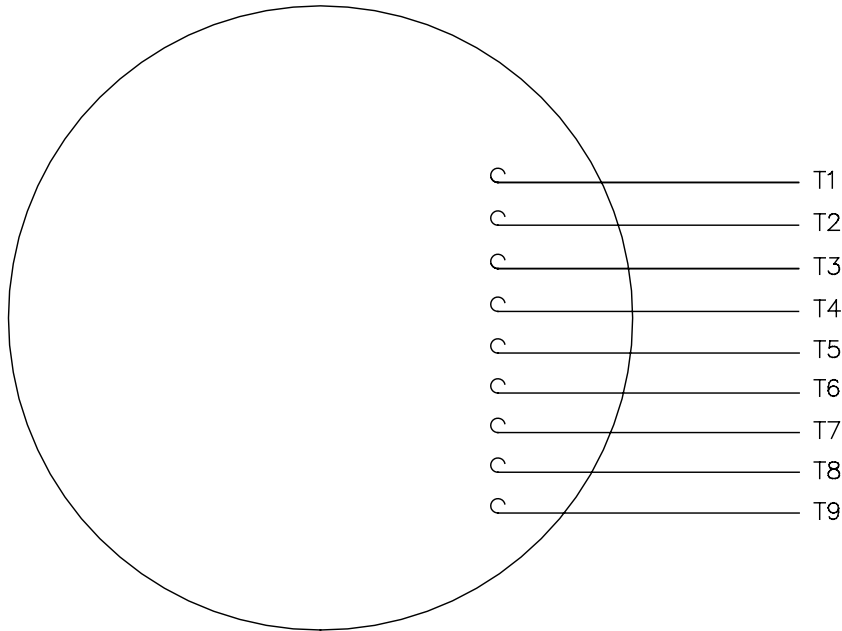
DASH NO.	"C"	"AD"
650	13.75	3.69
700	14.25	4.19
750	14.75	4.69
800	15.25	5.19
825	15.50	5.44
850	15.75	5.69
875	16.00	5.94
900	16.25	6.19
950	16.75	6.69

MAXIMUM FACE RUNOUT .004 T.I.R.  
 MAXIMUM PILOT ECCENTRICITY .004 T.I.R.  
 PERMISSIBLE SHAFT RUNOUT .002 T.I.R.

TOLERANCES UNLESS SPECIFIED		REGAL™ Regal Beloit America, Inc.		DRAWN	
DEC.	INCHES			SAJ 04/23/15	
X	±.1			CHK JD 04/23/15	
.XX	±.03	TITLE		APPD JD 04/23/15	
.XXX	±.005	OUTLINE - 145JM FRAME		SCALE 1=2	
.XXXX	±.0005	DRIP PROOF - RIGID "C"		REF 029012	
A	NEW DRAWING	SAJ 04/23/15	JD	.XXXX ±.0005	
NO.	REVISION	BY & DATE	CHK	ANG ±1/2'	
THIS DRAWING IN DESIGN AND DETAIL IS OUR PROPERTY AND MUST NOT BE USED EXCEPT IN CONNECTION WITH OUR WORK ALL RIGHTS OF DESIGN AND INVENTION ARE RESERVED THIS IS AN ELECTRONICALLY GENERATED DOCUMENT - DO NOT SCALE THIS PRINT		RFP	CAD FILE	607-0208	SIZE
		DIST			DRAWING NO.
					B 607-0208
					REV. A

005010-01

VIEW FROM OUTSIDE OF MOTOR AT SWITCH END.



VOLTAGE	L1	L2	L3	JOIN & INSULATE
HIGH	T1	T2	T3	(T4,T7) (T5,T8) (T6,T9)
LOW	T1,T7	T2,T8	T3,T9	T4,T5,T6

				TOLERANCES UNLESS SPECIFIED		<b>Regal Beloit America, Inc.</b>		DRAWN RDW 04/12/02			
				DEC.	INCHES			CHK			
				.X	±.1			APPD			
				.XX	±.01			SCALE 1=1			
				.XXX	±.005	TITLE		REF FIG.2-51			
A	UPDATED TO REGAL LOGO	SAJ 06/26/15	AJY	.XXXX	±.0005	MAT'L.		FMF			
NO.	REVISION	BY & DATE	CHK	ANG	±1/2"	FINISH		PREV			
THIS DRAWING IN DESIGN AND DETAIL IS OUR PROPERTY AND MUST NOT BE USED EXCEPT IN CONNECTION WITH OUR WORK ALL RIGHTS OF DESIGN AND INVENTION ARE RESERVED THIS IS AN ELECTRONICALLY GENERATED DOCUMENT - DO NOT SCALE THIS PRINT				RFP	04/12/02	CAD FILE		00501001	SIZE	DRAWING NO.	REV.
				DIST		BRF-NLV		A	005010-01	A	



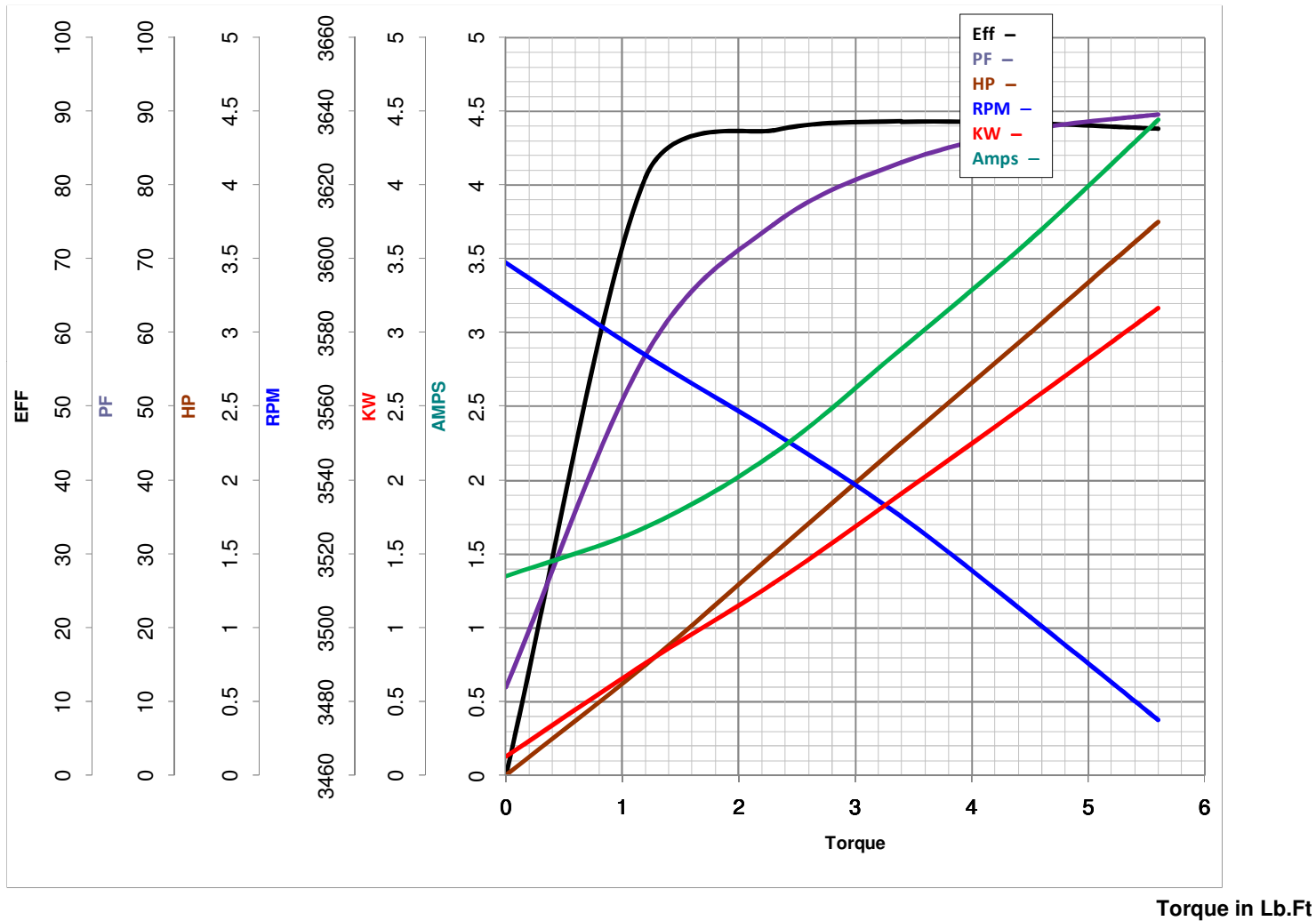
**LEESON ELECTRIC CORPORATION**  
 TYPICAL PERFORMANCE CURVE for AC MOTOR

Model No 122081.00

Catalog No 122081.00

Curve at 460 Volts      HP 3&2      PHASE 3  
60 HZ  
3 HP      VOLTS 230/460&190/380

HZ 60&50      RPM 3490&2880



FL TORQUE 4.5 Lb.Ft  
 BD TORQUE 17.9 Lb.Ft  
 LR TORQUE 15.2 Lb.Ft

FL AMPS 7.2/3.6  
 PU TORQUE 14.3 Lb.Ft  
 LR AMPS 30.9

WINDING T632175-3

Date 5/23/2018