

PRODUCT INFORMATION PACKET



Model No: C143T28FC1D

Catalog No: 121274.00

1.5HP.1.1kW.2850RPM.143.IP54.220/380V.3PH.50HZ.CONT.NOT.40C.1.15SF.C FACE.50
HERTZ.C143T28FC1D
50 Hz



Regal and Leeson are trademarks of Regal Beloit Corporation or one of its affiliated companies.

©2018 Regal Beloit Corporation, All Rights Reserved. MC017097E





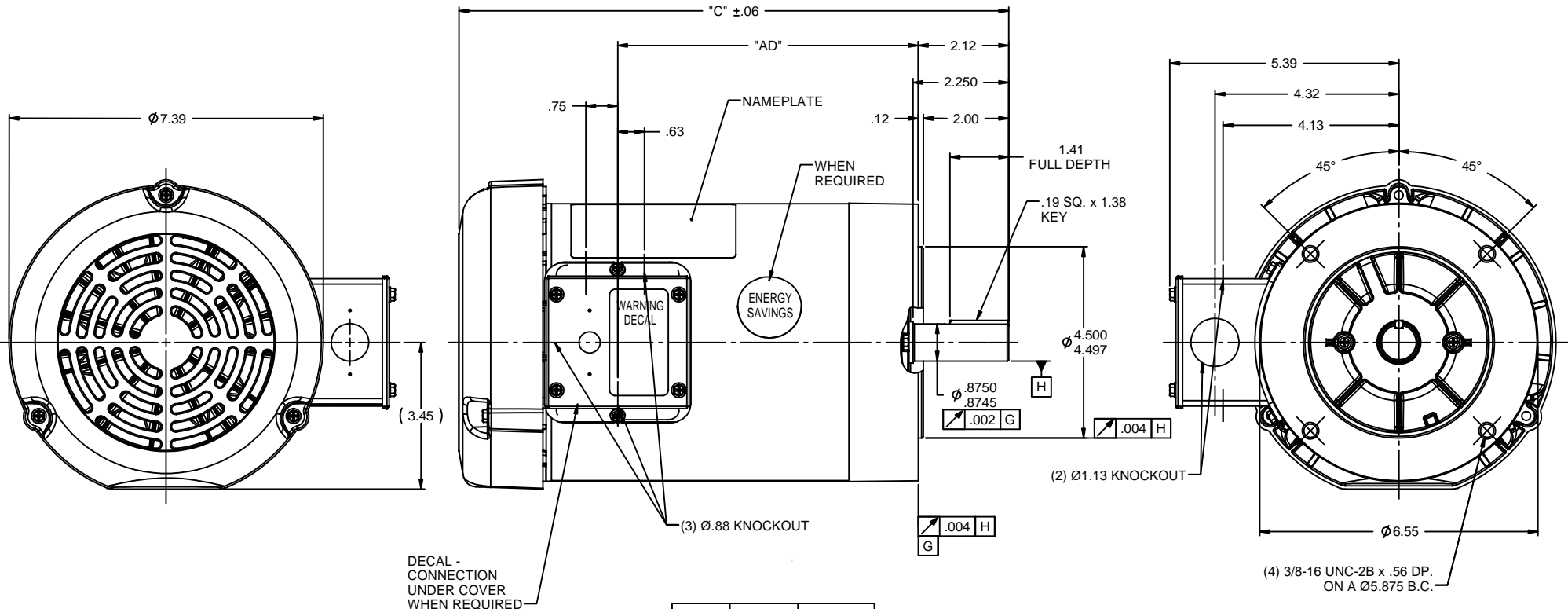
Nameplate Specifications

Output HP	1.50 Hp	Output KW	1.1 kW
Frequency	50 Hz	Voltage	220/380 V
Current	5.0/2.9/2.5 A	Speed	2850 rpm
Service Factor	1.15	Phase	3
Efficiency	80 %	Duty	Continuous
Insulation Class	B	Design Code	NO DESIGN CODE
KVA Code	L	Frame	143TC
Enclosure	Totally Enclosed Fan Cooled	Overload Protector	No
Ambient Temperature	40 °C	Drive End Bearing Size	6205
Opp Drive End Bearing Size	6203	UL	Recognized
CSA	Y	CE	Y
IP Code	54		

Technical Specifications

Electrical Type	Squirrel Cage Induction Run	Starting Method	Across The Line
Poles	2	Rotation	Reversible
Mounting	Round	Motor Orientation	HORIZONTAL
Drive End Bearing	BALL	Opp Drive End Bearing	BALL
Frame Material	Rolled Steel	Shaft Type	T
Overall Length	11.92 in	Frame Length	6.00 in
Shaft Diameter	0.875 in	Shaft Extension	2.25 in
Assembly/Box Mounting	F1 ONLY		
Outline Drawing	028777-600	Connection Diagram	005381.01

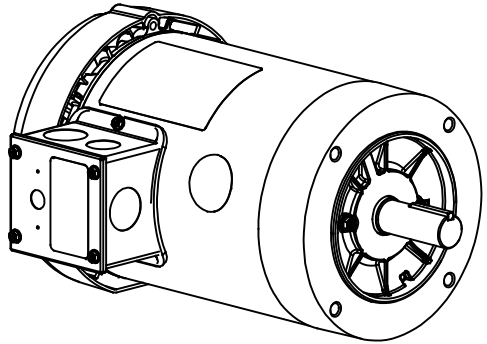
This is an uncontrolled document once printed or downloaded and is subject to change without notice. Date Created: 10/15/2018



DECAL - CONNECTION UNDER COVER WHEN REQUIRED

DASH NO.	"C"	"AD"
550	11.42	5.56
600	11.92	6.06
650	12.42	6.56
675	12.67	6.81
700	12.92	7.06
750	13.42	7.56
800	13.92	8.06

NOTE:
1) GASKETS THROUGHOUT



REVISION		BY & DATE	CHK	ANG	±1/2°	FINISH	GENERAL PURPOSE	SIZE	DRAWING NO	REV
05	ADDED FAN GUARD DIMENSIONS PER SALES	PG 1/5/2011	DEC					B	028777	05
04	ADDED DASH NO. 675	PG 5/21/2010	X							
03	ADDED ENERGY SAVINGS DECAL	PG 5/19/2010	.XX							
02	ADD "C" DIM. PER ISAAC 09-4157	LST 10/1/2009	.XXX							
01	REVISED GD&T POSITIONING & CALLOUT	KMM 8/27/07	.XXX							

LEESON ELECTRIC MOTORS GERMOTORS AND DRIVES

TOLERANCES UNLESS SPECIFIED:
DEC INCHES
X ±.1
.XX ±.03
.XXX ±.005
.XXX ±.0005

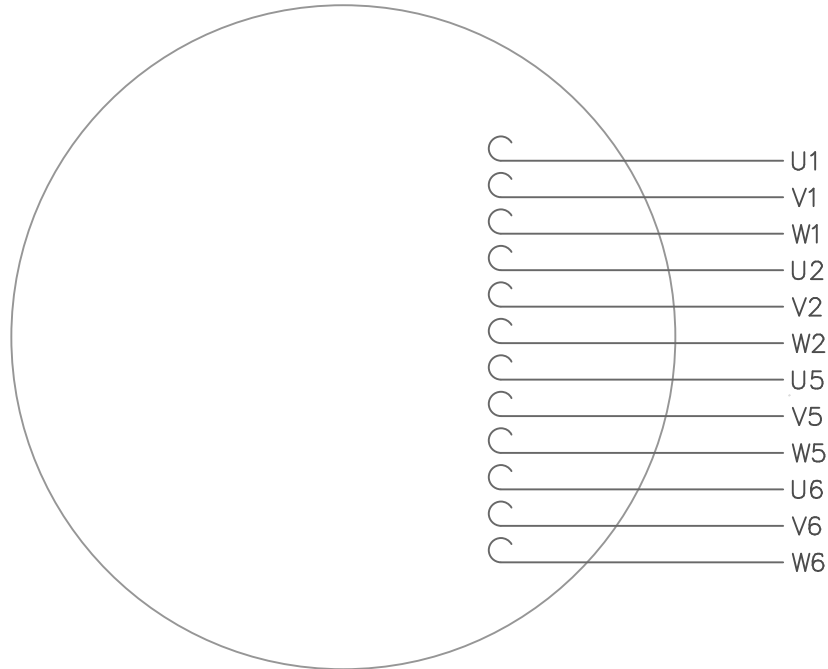
TITLE OUTLINE - 140TC FRAME
TEFC - "C" FACE

MATL

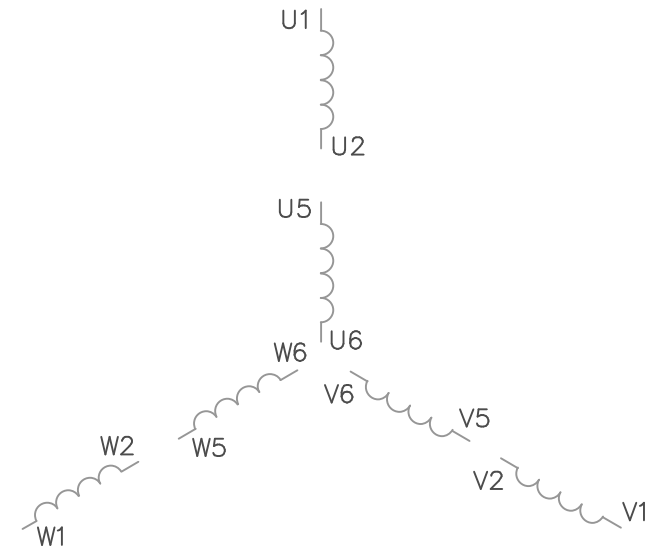
DRAWN KMM 08/02/07
CHK
APPR
SCALE 7:16
REF 028504.00
FMF 120038.00
PAGE OF

NETWORK FILE NAME 028777

VIEW FROM OUTSIDE OF MOTOR AT SWITCH END.



LINE LEADS



VOLTAGE	L1	L2	L3	JOIN
(2Δ) LOW	U1,W2 U5,W6	V1,U2 V5,U6	W1,V2 W5,V6	-----
(2Y) MEDIUM	U1,U5	V1,V5	W1,W5	(U2,V2,W2) (U6,V6,W6)
(1Δ) HIGH	U1,W6	V1,U6	W1,V6	(U2,U5) (V2,V5) (W2,W5)

TOLERANCES UNLESS OTHERWISE SPECIFIED

DECIMALS

.00 ± .01

.000 ± .005

.0000 ± .0005

FRACTIONS ± 1/64

ANGLES ± 1/2°

INCH/MM

LEESON ELECTRIC CORPORATION

DRAWN GWS 2/23/96

CH'K'D.

APPR.

SCALE 1=1

REF. 005352 PG 3

FMF

TITLE

MAT'L.

FINISH

EXT. WIRING DIAGRAM
TYPE "T" W/O PROTECTOR

DECAL - 080590

SIZE

A

DRAWING NO.

005381-01

STOCK

1 REDRAWN TO CURRENT STANDARDS

NO. REVISION

DBT

BY

05/30/97

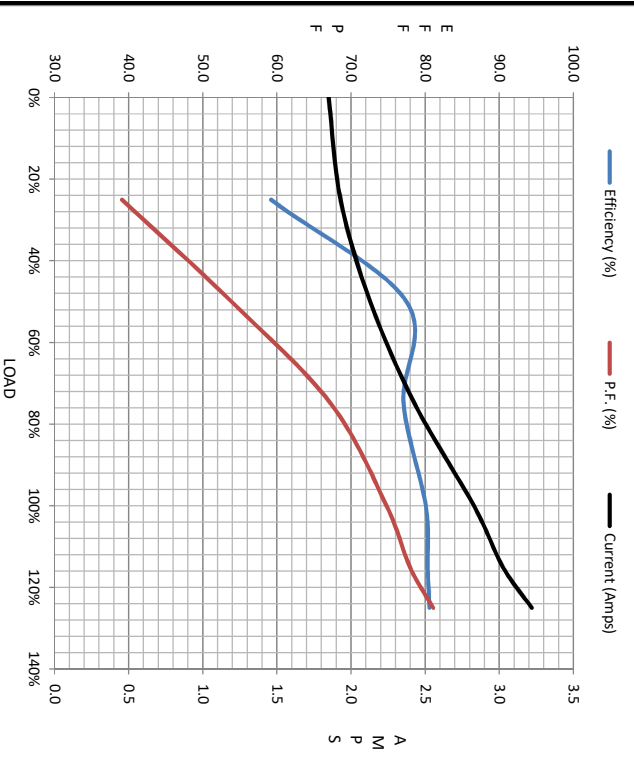
DATE

THIS DRAWING IN DESIGN AND DETAIL IS OUR PROPERTY
AND MUST NOT BE USED EXCEPT IN CONNECTION WITH OUR WORK
ALL RIGHTS OF DESIGN AND INVENTION ARE RESERVED



Motor Load Data								
Load	0%	25%	50%	75%	100%	115%	125%	LR
Current (Amps)	1.85	1.93	2.13	2.43	2.83	3.0	3.2	20.8
Torque (ft-lb)	0.00	0.70	1.40	2.00	2.71	3.1	3.4	9.0
HPM	3000	2966	2947	2921	2893	2.883	2.867	0
Efficiency (%)		59.2	77.5	77.1	80.1	80.4	80.6	
P.F. (%)	13.5	39.1	53.9	67.3	74.8	78.0	81.1	0.0

Motor Speed Data						Information Block																										
	LR	Pull-Up	BD	Rated	Idle	HP	Sync. RPM	Frame	Enclosure	Construction	Voltage	Frequency	Design	LR Code letter	Service Factor	Temp Rise @ FL	Duty	Ambient	Elevation	Rotor/Shaft wk ²	Ref Wdg	Sound Pressure @ 1M	VFD Rating	Outline Dwg	Conn. Diag	Additional Specifications:	R1	R2	X1	X2	Xm	
Speed (RPM)	0	1500	2760	2893	3000	1.5	3000	140	TEFC	NA	220/380	50	B	L	1.0	75	CONT	40	1,000	0.05	LB-Fc	0	NONE	028777-600	005381.01		0.0000	0.0000	0.0000	0.0000	0.0000	
Current (Amps)	20.8	19.2	12.5	2.83	1.85																											
Torque (ft-lb)	9.0	8.6	10.5	2.71	0.00																											



EQUIV CKT (OHMS / PHASE)			
R1	R2	X1	Xm
0.0000	0.0000	0.0000	0.0000

