

# PRODUCT INFORMATION PACKET



Model No: C145T17DB32F  
Catalog No: 121004.00  
..1 1/2HP..1750RPM.145T.DP.208-  
230/460V.3PH.60HZ.CONT.40C.1.15SF.RIGID.C145T17DB32F.....WATTS AVER.AUTOMATIC.....  
Open Drip Proof (ODP)



Regal and Leeson are trademarks of Regal Beloit Corporation or one of its affiliated companies.

©2018 Regal Beloit Corporation, All Rights Reserved. MC017097E





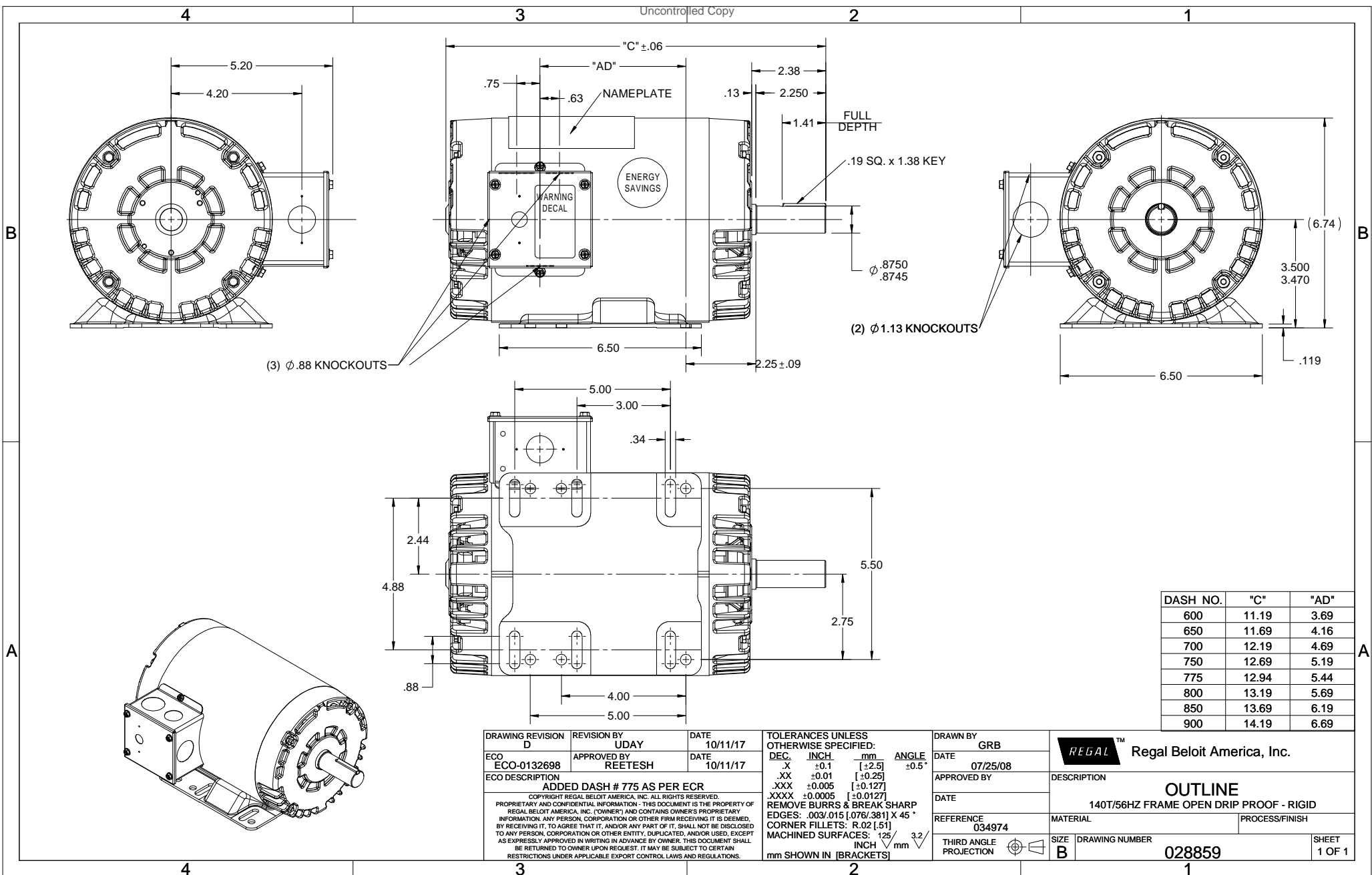
### Nameplate Specifications

Output HP	1.50 Hp	Output KW	1.1 kW
Frequency	60 Hz	Voltage	208-230/460 V
Current	4.6-4.8/2.4 A	Speed	1750 rpm
Service Factor	1.25	Phase	3
Efficiency	86.5 %	Duty	Continuous
Insulation Class	F	Design Code	B
KVA Code	L	Frame	145T
Enclosure	Drip Proof	Overload Protector	No
Ambient Temperature	40 °C	Drive End Bearing Size	6205
Opp Drive End Bearing Size	6203	UL	Recognized
CSA	Y	CE	Y
IP Code	22		

### Technical Specifications

Electrical Type	Squirrel Cage Induction Run	Starting Method	Across The Line
Poles	4	Rotation	Reversible
Mounting	Rigid base	Motor Orientation	HORIZONTAL
Drive End Bearing	BALL	Opp Drive End Bearing	BALL
Frame Material	Rolled Steel	Shaft Type	T
Overall Length	12.69 in	Frame Length	7.50 in
Shaft Diameter	0.875 in	Shaft Extension	2.25 in
Assembly/Box Mounting	F1 ONLY		
Outline Drawing	028859-750	Connection Diagram	005010.20

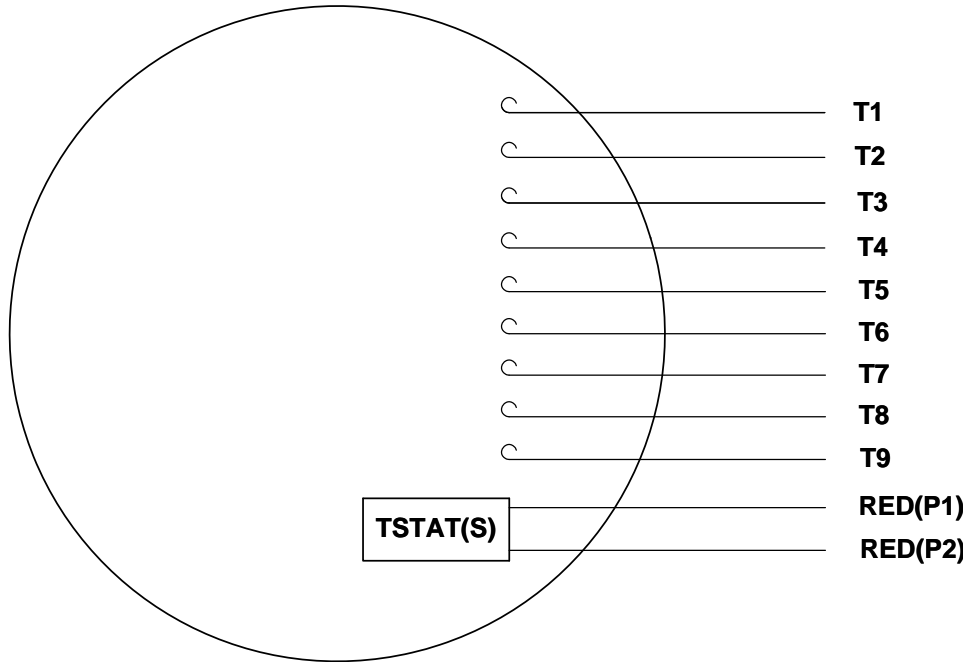
This is an uncontrolled document once printed or downloaded and is subject to change without notice. Date Created: 10/15/2018



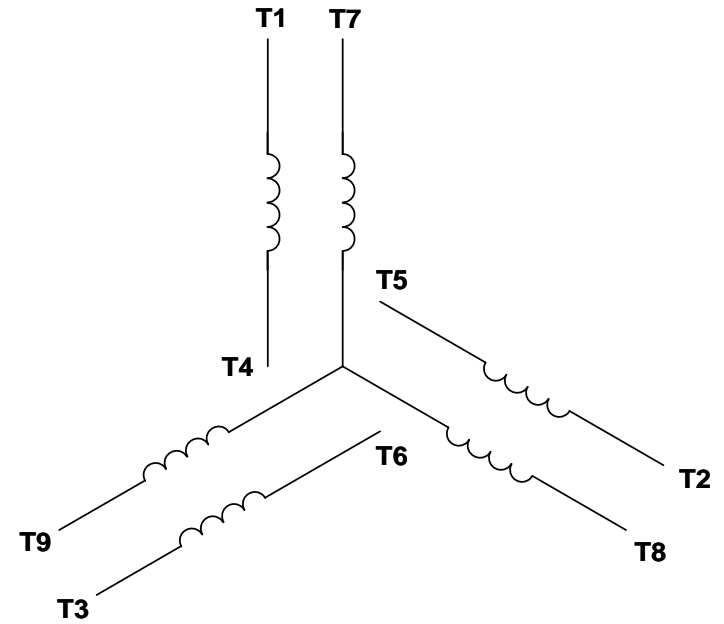
DASH NO.	"C"	"AD"
600	11.19	3.69
650	11.69	4.16
700	12.19	4.69
750	12.69	5.19
775	12.94	5.44
800	13.19	5.69
850	13.69	6.19
900	14.19	6.69

DRAWING REVISION D		REVISION BY UDAY	DATE 10/11/17	TOLERANCES UNLESS OTHERWISE SPECIFIED:		DRAWN BY GRB	Regal Beloit America, Inc.
ECO ECO-0132698		APPROVED BY REETESH	DATE 10/11/17	DEC.	INCH	mm	
ECO DESCRIPTION ADDED DASH # 775 AS PER ECR				ANGLE ±0.5°		DATE 07/25/08	DESCRIPTION OUTLINE
COPYRIGHT REGAL BELOIT AMERICA, INC. ALL RIGHTS RESERVED. PROPRIETARY AND CONFIDENTIAL INFORMATION - THIS DOCUMENT IS THE PROPERTY OF REGAL BELOIT AMERICA, INC. ("OWNER") AND CONTAINS OWNER'S PROPRIETARY INFORMATION. ANY PERSON, CORPORATION OR OTHER FIRM RECEIVING IT IS DEEMED, BY RECEIVING IT, TO AGREE THAT IT, AND/OR ANY PART OF IT, SHALL NOT BE DISCLOSED TO ANY PERSON, CORPORATION OR OTHER ENTITY, DUPLICATED, AND/OR USED, EXCEPT AS EXPRESSLY APPROVED IN WRITING IN ADVANCE BY OWNER. THIS DOCUMENT SHALL BE RETURNED TO OWNER UPON REQUEST. IT MAY BE SUBJECT TO CERTAIN RESTRICTIONS UNDER APPLICABLE EXPORT CONTROL LAWS AND REGULATIONS.				REMOVE BURRS & BREAK SHARP EDGES: .003/.015 [076/.381] X 45° CORNER FILLETS: R.02 [51]		APPROVED BY	DESCRIPTION 140T/56HZ FRAME OPEN DRIP PROOF - RIGID
				MACHINED SURFACES: 125/3.2		REFERENCE 034974	MATERIAL
				mm SHOWN IN [BRACKETS]		THIRD ANGLE PROJECTION	PROCESS/FINISH
						SIZE B	DRAWING NUMBER 028859
							SHEET 1 OF 1

VIEW FROM OUTSIDE OF MOTOR AT SWITCH END. Uncontrolled Copy



LINE LEADS



VOLTAGE	L1	L2	L3	JOIN & INSULATE
HIGH	T1	T2	T3	(T4,T7) (T5,T8) (T6,T9)
LOW	T1,T7	T2,T8	T3,T9	T4,T5,T6

DRAWING REVISION G REVISION BY MVG DATE 04/05/2017

ECO ECO-0121253 APPROVED BY SM DATE 04/05/2017

ECO DESCRIPTION  
ADDED P1 & P2 FOR TSTAT

COPYRIGHT REGAL BELOIT AMERICA, INC. ALL RIGHTS RESERVED. PROPRIETARY AND CONFIDENTIAL INFORMATION - THIS DOCUMENT IS THE PROPERTY OF REGAL BELOIT AMERICA, INC. ('OWNER') AND CONTAINS OWNER'S PROPRIETARY INFORMATION. ANY PERSON, CORPORATION OR OTHER FIRM RECEIVING IT IS DEEMED, BY RECEIVING IT, TO AGREE THAT IT, AND/OR ANY PART OF IT, SHALL NOT BE DISCLOSED TO ANY PERSON, CORPORATION OR OTHER ENTITY, DUPLICATED, AND/OR USED, EXCEPT AS EXPRESSLY APPROVED IN WRITING IN ADVANCE BY OWNER. THIS DOCUMENT SHALL BE RETURNED TO OWNER UPON REQUEST. IT MAY BE SUBJECT TO CERTAIN RESTRICTIONS UNDER APPLICABLE EXPORT CONTROL LAWS AND REGULATIONS.

TOLERANCES UNLESS OTHERWISE SPECIFIED:

DEC.	INCH	mm	ANGLE
.X	±0.1	[±2.5]	±0.5°
.XX	±0.01	[±0.25]	
.XXX	±0.005	[±0.127]	
.XXXX	±0.0005	[±0.0127]	

REMOVE BURRS & BREAK SHARP EDGES: .003/.015 [.076/.381] X 45°  
CORNER FILLETS: R.02 [.51]  
MACHINED SURFACES: 125/3.2 INCH/mm

mm SHOWN IN [BRACKETS]

DRAWN BY DBT 12/16/97

DATE

APPROVED BY KH 12/17/97

DATE

REFERENCE

THIRD ANGLE PROJECTION

**REGAL**™ Regal Beloit America, Inc.

DESCRIPTION  
**CONN DIAGRAM-EXTERNAL**  
3 PHASE WITH PROTECTOR

MATERIAL DECAL - 004014 (TSTAT) - 080582 PROCESS/FINISH STOCK

SIZE A DRAWING NUMBER 00501020 SHEET 1 OF 1



P.O. BOX 8003  
WAUSAU, WI 54401-8003  
PH. 715-675-3311

DATA VOLTS: 460

CERTIFICATION DATA SHEET

CONN. DIAGRAM: 005010.20  
OUTLINE: 028859-750  
WINDING: T634341

CAT #: 121004.00

DR 3

TYPICAL MOTOR PERFORMANCE DATA

HP	KW	SYNC RPM	FL RPM	FRAME	ENCLOSURE	TYPE	KVA CODE	DESIGN			
1.5	1.1	1800	1746	145T	DP	TDR	L	B			
PH	HZ	VOLTS	AMPS	START TYPE	DUTY	INSL	S.F.	AMB	ELEV.		
3	60/50	230/460#208-230/460	4.3/2.15&5.4.4.85/2.4	ACROSS THE LINE	CONT	F	1.15	40	3300		
F.L. EFF	86.5	3/4 LD EFF	87.0	1/2 LD EFF	84.2	GTD EFF	0.0	ELECT. TYPE			
F.L. PF	70.0	3/4 LD PF	67.2	1/2 LD PF	55.1	SQ CAGE IND RUN					
F.L. TORQUE	LR AMPS @ 460 V	18.1	14.8	LB-FT	329%	19.8	LB-FT	440%	F.L. RISE (°C)		
4.5	LB-FT										
PRESSURE @ 3	POWER	ROTOR WK²	MAX. LOAD WK²	SAFE STALL TIME	STARTS/HOUR	MOTOR WGT					
0	DBA	9	DBA	0.14	LB-FT²	0.1	LB-FT²	10	SEC.	0	LB.

\*\*\* SUPPLEMENTAL INFORMATION \*\*\*

DE BRACKET TYPE	ODE BRACKET TYPE	MOUNT TYPE	MOTOR ORIENTATION	SEVERE DUTY	HAZARDOUS LOCATION	DRIP COVER	SCREENS	PAINT
STANDARD	STANDARD	RIGID	HORIZONTAL	NO	NONE	NO	NONE	N - LEESON WATTS
BEARINGS	GREASE	SHAFT TYPE	SPECIAL DE	SPECIAL ODE	SHAFT	MATERIAL	FRAME MATERIAL	
DE ODE	POLYREX EM	T	NONE	NONE	1144 STRESSPROOF (C-223)	ROLLED STEEL		
BALL BALL	6205	6203						
THERMOSTATS	PROTECTORS	WDG RTD's	BRG RTD's	THERMISTORS	CONTROL	SPACE HEATERS		
TSTATS (N/C)	AUTOMATIC	NONE	NONE	NONE	FALSE	NA		
R1 (ohms/ph)	R2 (ohms/ph)	X1 (ohms/ph)	X2 (ohms/ph)	Xm (ohms/ph)	VIBRATION (in/sec)	FLOAT		
0	0	0	0	0	0.150	ODE		

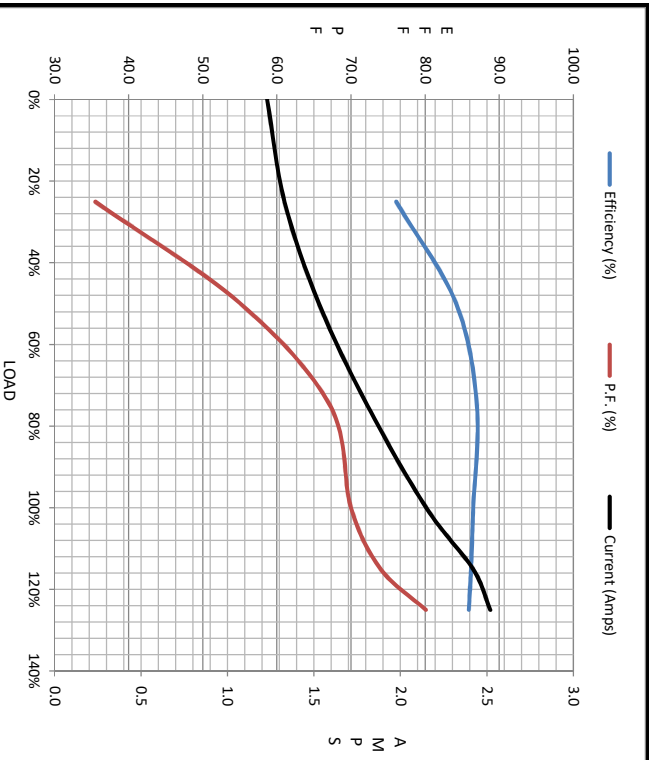
* N O T E S *		INVERTER TORQUE: NONE	
		INV. HP SPEED RANGE: NONE	
		ENCODER: NONE	
		BRAKE: NONE	
		FT-LB: NONE	
		VOLTAGE: NONE	
		UL: Y-(LEESON UL REC)	

DATE:	1/23/2018	INVERTER TORQUE:	NONE
		INV. HP SPEED RANGE:	NONE
		ENCODER:	NONE
		BRAKE:	NONE
		FT-LB:	NA
		VOLTAGE:	NONE
		UL:	Y-(LEESON UL REC)
		HZ:	



Motor Load Data						LR	
Load	0%	25%	50%	75%	100%	115%	125%
Current (Amps)	1.23	1.33	1.53	1.81	2.15	2.42	2.52
Torque (ft-lb)	0.00	1.13	2.25	3.4	4.5	5.2	5.6
RPM	1800	1786	1773	1761	1746	1740	1732
Efficiency (%)		76.1	84.2	87.0	88.5	86.2	85.9
P.F. (%)	9.9	35.5	55.1	67.2	70.0	74.0	80.1

Motor Speed Data						Information Block			
	LR	Pull-Up	BD	Rated	Idle	HP	Sync. RPM	Frame	Enclosure
Speed (RPM)	0	900	1600	1746	1800	1.5	1800	140	DP
Current (Amps)	18.1	16.0	12.1	2.15	1.23				
Torque (ft-lb)	14.8	13.5	19.8	4.5	0.00				
Construction						TDR			
Voltage						230/460#208-230/460 V			
Frequency						60 Hz			
Design						B			
LR Code letter						L			
Service Factor						1.15			
Temp Rise @ FL						28 °C			
Duty						CONT			
Ambient						40 °C			
Elevation						1,000 feet			
Rotor/Shaft wk <sup>2</sup>						0.14 LB-Ft <sup>2</sup>			
Ref Wdg						T634341 DR			
Sound Pressure @ 1M						0 dBA			
VFD Rating						NONE			
Outline Dwg						028859-750			
Conn. Diag						005010.20			
Additional Specifications:	EQUIV CKT (OHMS / PHASE)								
	R1	R2	X1	X2	Xm				
	0.0000	0.0000	0.0000	0.0000	0.0000				



Parameter	Value
Efficiency (%)	76.1
P.F. (%)	84.2
Current (Amps)	1.53
Speed (RPM)	1773
Torque (ft-lb)	2.25

