

PRODUCT INFORMATION PACKET



Model No: C143T17DB10F

Catalog No: 121003.00

..1HP..1760RPM.143T.DP.230/460V.3PH.60HZ.CONT.40C.1.15SF.RIGID.C143T17DB10F.....WATTSAYER.
AUTOMATIC.....

Open Drip Proof (ODP)



Regal and Leeson are trademarks of Regal Beloit Corporation or one of its affiliated companies.

©2018 Regal Beloit Corporation, All Rights Reserved. MC017097E





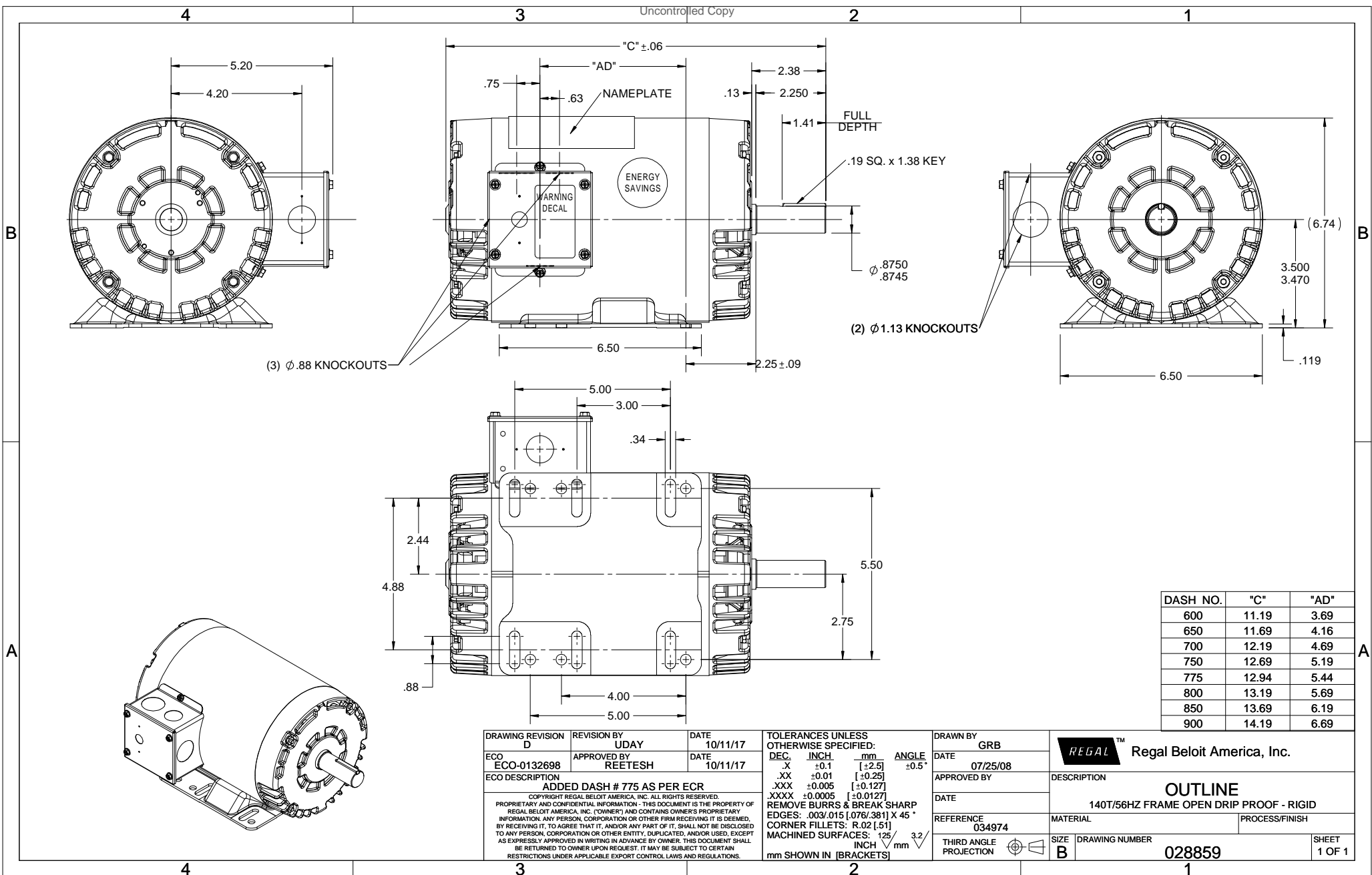
Nameplate Specifications

Output HP	1 Hp	Output KW	0.75 kW
Frequency	60 Hz	Voltage	208-230/460 V
Current	3.2-3.2/1.6 A	Speed	1760 rpm
Service Factor	1.25	Phase	3
Efficiency	85.5 %	Duty	Continuous
Insulation Class	F	Design Code	B
KVA Code	N	Frame	143T
Enclosure	Drip Proof	Overload Protector	Automatic
Ambient Temperature	40 °C	Drive End Bearing Size	6205
Opp Drive End Bearing Size	6203	UL	Recognized
CSA	Y	CE	Y
IP Code	22		

Technical Specifications

Electrical Type	Squirrel Cage Induction Run	Starting Method	Across The Line
Poles	4	Rotation	Reversible
Mounting	Rigid base	Motor Orientation	HORIZONTAL
Drive End Bearing	BALL	Opp Drive End Bearing	BALL
Frame Material	Rolled Steel	Shaft Type	T
Overall Length	12.19 in	Frame Length	7.00 in
Shaft Diameter	0.875 in	Shaft Extension	2.25 in
Assembly/Box Mounting	F1 ONLY		
Outline Drawing	028859-700	Connection Diagram	005010.20

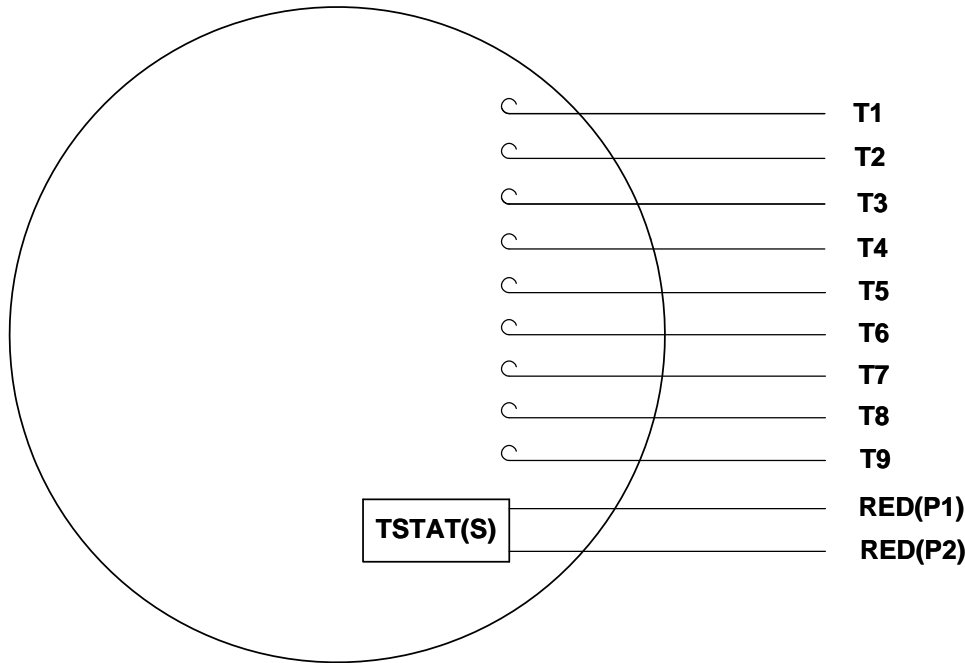
This is an uncontrolled document once printed or downloaded and is subject to change without notice. Date Created: 10/15/2018



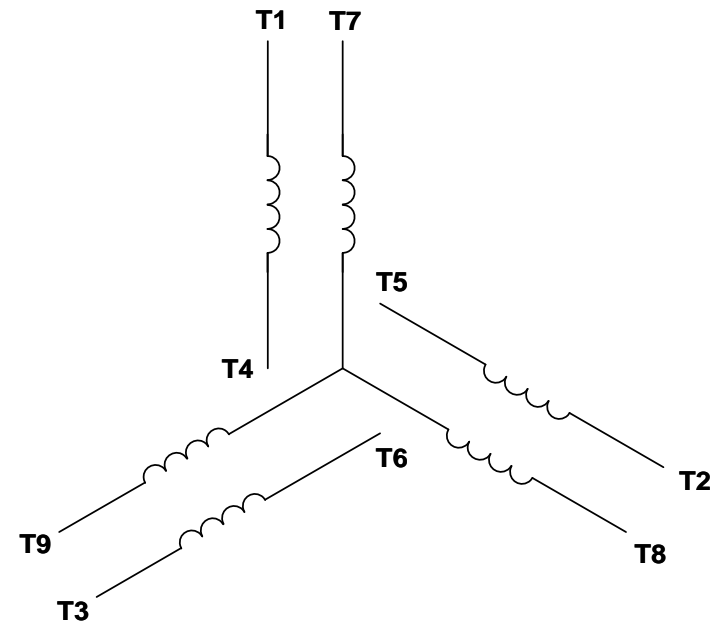
DASH NO.	"C"	"AD"
600	11.19	3.69
650	11.69	4.16
700	12.19	4.69
750	12.69	5.19
775	12.94	5.44
800	13.19	5.69
850	13.69	6.19
900	14.19	6.69

DRAWING REVISION D		REVISION BY UDAY	DATE 10/11/17	TOLERANCES UNLESS OTHERWISE SPECIFIED:		DRAWN BY GRB	Regal Beloit America, Inc.		
ECO ECO-0132698		APPROVED BY REETESH	DATE 10/11/17	DEC.	INCH	mm		DATE 07/25/08	
ECO DESCRIPTION ADDED DASH # 775 AS PER ECR				.X	±0.1	[+2.5]	APPROVED BY		
COPYRIGHT REGAL BELOIT AMERICA, INC. ALL RIGHTS RESERVED. PROPRIETARY AND CONFIDENTIAL INFORMATION - THIS DOCUMENT IS THE PROPERTY OF REGAL BELOIT AMERICA, INC. ("OWNER") AND CONTAINS OWNER'S PROPRIETARY INFORMATION. ANY PERSON, CORPORATION OR OTHER FIRM RECEIVING IT IS DEEMED, BY RECEIVING IT, TO AGREE THAT IT, AND/OR ANY PART OF IT, SHALL NOT BE DISCLOSED TO ANY PERSON, CORPORATION OR OTHER ENTITY, DUPLICATED, AND/OR USED, EXCEPT AS EXPRESSLY APPROVED IN WRITING IN ADVANCE BY OWNER. THIS DOCUMENT SHALL BE RETURNED TO OWNER UPON REQUEST. IT MAY BE SUBJECT TO CERTAIN RESTRICTIONS UNDER APPLICABLE EXPORT CONTROL LAWS AND REGULATIONS.				.XX	±0.01	[+0.25]	DATE		
				.XXX	±0.005	[+0.127]	REFERENCE 034974	MATERIAL	DESCRIPTION OUTLINE 140T/56HZ FRAME OPEN DRIP PROOF - RIGID
				.XXXX	±0.0005	[+0.0127]	DATE	PROCESS/FINISH	
				REMOVE BURRS & BREAK SHARP	EDGES: .003/.015 [076/381] X 45°	CORNER FILLETS: R.02 [51]	THIRD ANGLE PROJECTION		
				MACHINED SURFACES: 125/3.2	INCH	mm	SIZE B		
				mm SHOWN IN [BRACKETS]			DRAWING NUMBER 028859		
							SHEET 1 OF 1		

VIEW FROM OUTSIDE OF MOTOR AT SWITCH END. Uncontrolled Copy



LINE LEADS



VOLTAGE	L1	L2	L3	JOIN & INSULATE
HIGH	T1	T2	T3	(T4,T7) (T5,T8) (T6,T9)
LOW	T1,T7	T2,T8	T3,T9	T4,T5,T6

DRAWING REVISION **G** REVISION BY **MVG** DATE **04/05/2017**

ECO **ECO-0121253** APPROVED BY **SM** DATE **04/05/2017**

ECO DESCRIPTION
ADDED P1 & P2 FOR TSTAT

COPYRIGHT REGAL BELOIT AMERICA, INC. ALL RIGHTS RESERVED.
PROPRIETARY AND CONFIDENTIAL INFORMATION - THIS DOCUMENT IS THE PROPERTY OF
REGAL BELOIT AMERICA, INC. ("OWNER") AND CONTAINS OWNER'S PROPRIETARY
INFORMATION. ANY PERSON, CORPORATION OR OTHER FIRM RECEIVING IT IS DEEMED,
BY RECEIVING IT, TO AGREE THAT IT, AND/OR ANY PART OF IT, SHALL NOT BE DISCLOSED
TO ANY PERSON, CORPORATION OR OTHER ENTITY, DUPLICATED, AND/OR USED, EXCEPT
AS EXPRESSLY APPROVED IN WRITING IN ADVANCE BY OWNER. THIS DOCUMENT SHALL
BE RETURNED TO OWNER UPON REQUEST. IT MAY BE SUBJECT TO CERTAIN
RESTRICTIONS UNDER APPLICABLE EXPORT CONTROL LAWS AND REGULATIONS.

TOLERANCES UNLESS OTHERWISE SPECIFIED:

DEC.	INCH	mm	ANGLE
.X	±0.1	[±2.5]	±0.5°
.XX	±0.01	[±0.25]	
.XXX	±0.005	[±0.127]	
.XXXX	±0.0005	[±0.0127]	

REMOVE BURRS & BREAK SHARP EDGES: .003/.015 [.076/.381] X 45°
CORNER FILLETS: R.02 [.51]
MACHINED SURFACES: 125/3.2 INCH/mm
mm SHOWN IN [BRACKETS]

DRAWN BY **DBT 12/16/97**

DATE

APPROVED BY **KH 12/17/97**

DATE

REFERENCE

THIRD ANGLE PROJECTION

Regal Beloit America, Inc.

DESCRIPTION
CONN DIAGRAM-EXTERNAL
3 PHASE WITH PROTECTOR

MATERIAL DECAL - 004014 (TSTAT) - 080582	PROCESS/FINISH STOCK
SIZE A	DRAWING NUMBER 00501020
SHEET 1 OF 1	



P.O. BOX 8003
WAUSAU, WI 54401-8003
PH. 715-675-3311

DATA VOLTS: 460

CERTIFICATION DATA SHEET

CONN. DIAGRAM: 005010.20
OUTLINE: 028859-700
WINDING: T634342

CAT #: 121003.00

DR 3

TYPICAL MOTOR PERFORMANCE DATA

HP	KW	SYNC RPM	FL RPM	FRAME	ENCLOSURE	TYPE	KVA CODE	DESIGN	
1	0.75	1800	1760	143T	DP	TDR	N	B	
PH	HZ	VOLTS	AMPS	START TYPE	DUTY	INSL	S.F.	AMB	ELEV.
3	60/50	230/460#208-230/460	3.2/1.683 4.3/4/1.7	ACROSS THE LINE	CONT	F	1.15	40	3300
F.L. EFF	85.5	3/4 LD EFF	85.2	1/2 LD EFF	81.7	GTD EFF	84.0	ELECT. TYPE	
F.L. PF	68.5	3/4 LD PF	62.8	1/2 LD PF	48.0	SQ CAGE IND RUN			
F.L. TORQUE	LR AMPS @ 460 V	L.R. TORQUE	B.D. TORQUE						
2.98 LB-FT	14.5	12.0 LB-FT	403%	15.0 LB-FT	503%	21			
PRESSURE @ 3	POWER	ROTOR WK ²	MAX. LOAD WK ²	SAFE STALL TIME	STARTS/HOUR	MOTOR WGT			
0 DBA	9 DBA	0.12 LB-FT ²	0.1 LB-FT ²	10 SEC.	2	0 LB.			

*** SUPPLEMENTAL INFORMATION ***

DE BRACKET TYPE	ODE BRACKET TYPE	MOUNT TYPE	MOTOR ORIENTATION	SEVERE DUTY	HAZARDOUS LOCATION	DRIIP COVER	SCREENS	PAINT
STANDARD	STANDARD	RIGID	HORIZONTAL	NO	NONE	NO	NONE	N - LEESON WATTS
BEARINGS	GREASE	SHAFT TYPE	SPECIAL DE	SPECIAL ODE	SHAFT	MATERIAL	FRAME MATERIAL	
DE ODE	POLYREX EM	T	NONE	NONE	1144 STRESSPROOF (C-223)	ROLLED STEEL		
BALL BALL								
6205	6203							
THERMOSTATS	PROTECTORS	WDG RTD's	BRG RTD's	THERMISTORS	CONTROL	SPACE HEATERS		
TSTATS (N/C)	AUTOMATIC	NONE	NONE	NONE	FALSE	NA		
R1 (ohms/ph)	R2 (ohms/ph)	X1 (ohms/ph)	X2 (ohms/ph)	Xm (ohms/ph)	VIBRATION (in/sec)	FLOAT ODE		
0	0	0	0	0	0.150			

* N O T E S *		INVERTER TORQUE: NONE	
		INV. HP SPEED RANGE: NONE	
		ENCODER: NONE	
		NONE	
		NONE	
		BRAKE: NONE	
		NONE	
		FT-LB: NA	
		NONE	
		NONE	
		NONE PPR	
		NONE	

DATE:	1/23/2018	VOLTAGE:	NONE	HZ:	
		UL: Y-(LEESON UL REC)			

Data Sheet

Date: 1/23/2018

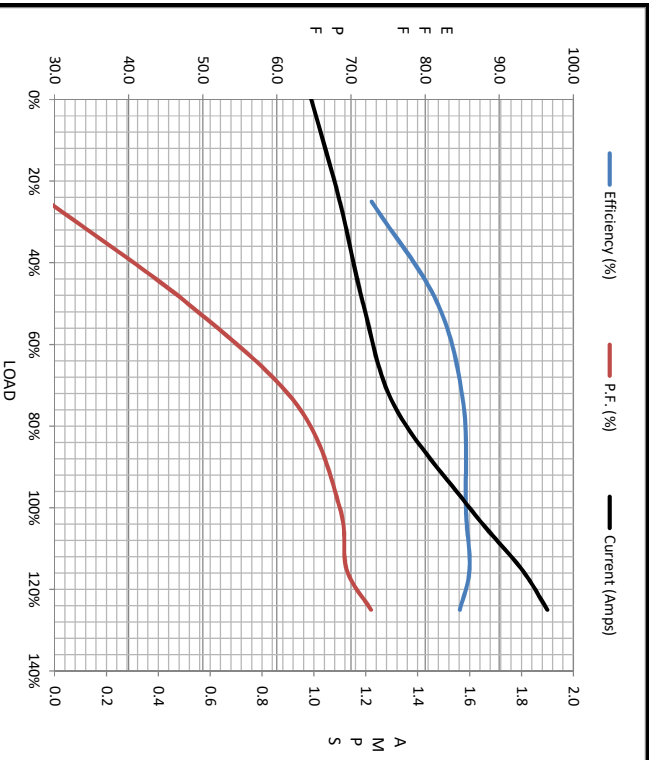
121003.00



Data @ 460 V

Motor Load Data						LR	
Load	0%	25%	50%	75%	100%	115%	125%
Current (Amps)	0.99	1.10	1.19	1.31	1.60	1.80	1.90
Torque (ft-lb)	0.00	0.73	1.47	2.22	2.98	3.4	3.8
RPM	1800	1791	1780	1770	1760	1754	1749
Efficiency (%)		72.8	81.7	85.2	85.5	86.0	84.7
P.F. (%)	8.2	29.1	48.0	62.8	68.5	69.4	72.7

Motor Speed Data					Information Block				
	LR	Pull-Up	BD	Rated	Idle	HP	Sync. RPM	Frame	Enclosure
Speed (RPM)	0	900	1575	1760	1800	1.0	1800	140	DP
Current (Amps)	14.5	13.0	9.9	1.60	0.99				
Torque (ft-lb)	12.0	11.0	15.0	2.98	0.00				
Construction	TDR								
Voltage	230/460#208-230/460								
Frequency	60								
Design	A								
LR Code letter	N								
Service Factor	1.15								
Temp Rise @ FL	21								
Duty	CONT								
Ambient	40								
Elevation	1,000								
Rotor/Shaft wk ²	0.12								
Ref Wdg	T634342 DR								
Sound Pressure @ 1M	0								
VFD Rating	NONE								
Outline Dwg	028859-700								
Conn. Diag	005010.20								
Additional Specifications:	EQUIV CKT (OHMS / PHASE)								
	R1	R2	X1	X2	Xm				
	0.0000	0.0000	0.0000	0.0000	0.0000				



Information Block				
HP	1.0			
Sync. RPM	1800			
Frame	140			
Enclosure	DP			
Construction	TDR			
Voltage	230/460#208-230/460			
Frequency	60			
Design	A			
LR Code letter	N			
Service Factor	1.15			
Temp Rise @ FL	21			
Duty	CONT			
Ambient	40			
Elevation	1,000			
Rotor/Shaft wk ²	0.12			
Ref Wdg	T634342 DR			
Sound Pressure @ 1M	0			
VFD Rating	NONE			
Outline Dwg	028859-700			
Conn. Diag	005010.20			
Additional Specifications:	EQUIV CKT (OHMS / PHASE)			
	R1	R2	X1	X2
	0.0000	0.0000	0.0000	0.0000

