

# PRODUCT INFORMATION PACKET



Model No: C145T34NB2E

Catalog No: 120379.00

.3HP..3450RPM.145T.TENV.208-230/460V.3PH.60HZ.AIROVER.40C.1.0SF.RIGID.C145T34NB2E.....AG -  
FAN & BLOWER.NOT.....

Aeration Fan



Regal and Leeson are trademarks of Regal Beloit Corporation or one of its affiliated companies.

©2018 Regal Beloit Corporation, All Rights Reserved. MC017097E





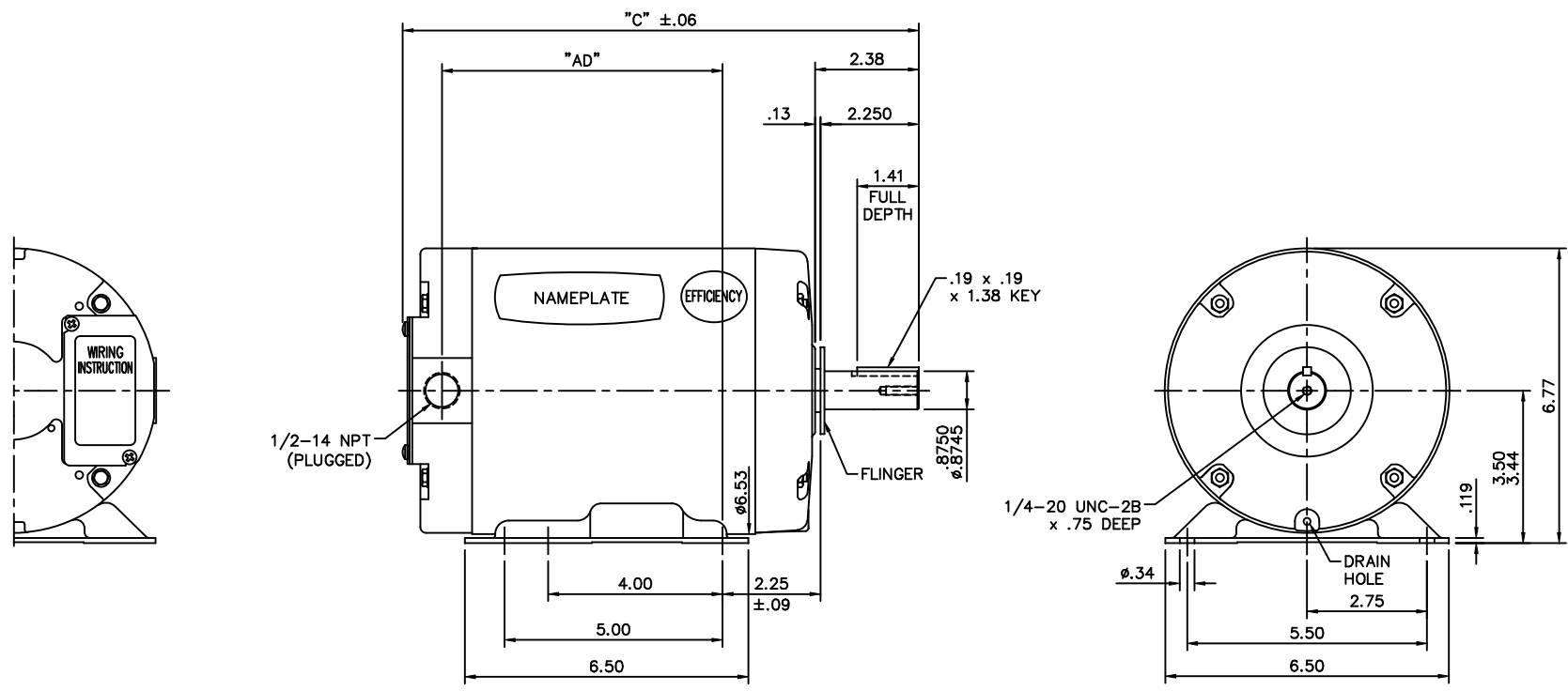
### Nameplate Specifications

Output HP	3 Hp	Output KW	2.2 kW
Frequency	60 Hz	Voltage	208-230/460 V
Current	8.4-7.6/3.8 A	Speed	3450 rpm
Service Factor	1	Phase	3
Efficiency	84 %	Duty	Continuous
Insulation Class	F	Design Code	B
KVA Code	J	Frame	145T
Enclosure	Totally Enclosed Air Over	Overload Protector	No
Ambient Temperature	40 °C	Drive End Bearing Size	6205
Opp Drive End Bearing Size	6203	UL	Recognized
CSA	Y	CE	N
IP Code	43		

### Technical Specifications

Electrical Type	Squirrel Cage Induction Run	Starting Method	Across The Line
Poles	2	Rotation	Reversible
Mounting	Rigid base	Motor Orientation	HORIZONTAL
Drive End Bearing	BALL	Opp Drive End Bearing	BALL
Frame Material	Rolled Steel	Shaft Type	T
Overall Length	12.34 in	Frame Length	7.00 in
Shaft Diameter	0.875 in	Shaft Extension	2.25 in
Assembly/Box Mounting	F1 ONLY		
Outline Drawing	034949-700	Connection Diagram	005010.01

This is an uncontrolled document once printed or downloaded and is subject to change without notice. Date Created: 10/15/2018



DASH NO.	"C"	"AD"
600	11.34	5.94
650	11.84	6.44
700	12.34	6.94
750	12.84	7.44
800	13.34	7.94

GASKETS THROUGHOUT

		TOLERANCES UNLESS SPECIFIED			ELECTRIC MOTORS GEARMOTORS AND DRIVES	DRAWN GWS 7/31/02
		DEC.	INCHES			CHK
		.X	±.1			APPD
		.XX	±.03			SCALE 3=8
		.XXX	±.005			REF 033388
		.XXXX	±.0005	MAT'L FAN DUTY	FMF 120377	
NO.	REVISION	BY & DATE	CHK	ANG ±1/2°	FINISH STOCK	PREV
THIS DRAWING IN DESIGN AND DETAIL IS OUR PROPERTY AND MUST NOT BE USED EXCEPT IN CONNECTION WITH OUR WORK ALL RIGHTS OF DESIGN AND INVENTION ARE RESERVED THIS IS AN ELECTRONICALLY GENERATED DOCUMENT - DO NOT SCALE THIS PRINT				RFP	CAD FILE 034949	SIZE B
				DIST BRF		DRAWING NO. 034949
						REV.

005010-01

VIEW FROM OUTSIDE OF MOTOR AT SWITCH END.



VOLTAGE	L1	L2	L3	JOIN & INSULATE
HIGH	T1	T2	T3	(T4,T7) (T5,T8) (T6,T9)
LOW	T1,T7	T2,T8	T3,T9	T4,T5,T6

				TOLERANCES UNLESS SPECIFIED		<b>Regal Beloit America, Inc.</b>		DRAWN RDW 04/12/02		
				DEC.	INCHES			CHK		
				.X	±.1			APPD		
				.XX	±.01			SCALE 1=1		
				.XXX	±.005	REF FIG.2-51				
A	UPDATED TO REGAL LOGO	SAJ 06/26/15	AJY	.XXXX	±.0005	TITLE EXTERNAL WIRING DIAGRAM 3 PHASE W/O PROTECTOR		FMF		
NO.	REVISION	BY & DATE	CHK	ANG	±1/2"	FINISH DECAL - 004014		PREV		
THIS DRAWING IN DESIGN AND DETAIL IS OUR PROPERTY AND MUST NOT BE USED EXCEPT IN CONNECTION WITH OUR WORK ALL RIGHTS OF DESIGN AND INVENTION ARE RESERVED THIS IS AN ELECTRONICALLY GENERATED DOCUMENT - DO NOT SCALE THIS PRINT				RFP	04/12/02	CAD FILE 00501001		SIZE	DRAWING NO.	REV.
				DIST BRF-NLV		A	005010-01	A		



Motor Load Data						
Load	0%	25%	50%	75%	100%	LR
Current (Amps)	1.70	2.01	2.38	3.0	3.8	30.0
Torque (ft-lb)	0.00	1.13	2.25	3.4	4.5	13.0
RPM	3600	3569	3547	3519	3486	3452
Efficiency (%)		67.7	85.9	85.6	84.8	85.3
P.F. (%)	11.8	52.9	69.6	81.8	86.9	87.8

Motor Speed Data					
	LR	Pull-Up	BD	Rated	Idle
Speed (RPM)	0	400	2300	3486	3600
Current (Amps)	30.0	27.6	18.0	3.8	1.70
Torque (ft-lb)	13.0	12.7	15.2	4.5	0.00

Information Block					
HP	3.0				
Sync. RPM	3600				
Frame	140				
Enclosure	TENV				
Construction	NA				
Voltage	208-230/460				V
Frequency	60				Hz
Design	B				
LR Code letter	J				
Service Factor	1.15				
Temp Rise @ FL	82				°C
Duty	AIROVER				
Ambient	40				°C
Elevation	1,000				feet
Rotor/Shaft wk²	0.07				LB-Ft²
Ref Wdg	T632164	NR			
Sound Pressure @ 1M	999				dB(A)
VFD Rating	NONE				
Outline Dwg	034949-700				
Conn. Diag	005010.01				
Additional Specifications:					
0					
	EQUIV CKT (OHMS / PHASE)				
R1	R2	X1	X2	Xm	
0.0000	0.0000	0.0000	0.0000	0.0000	

