

PRODUCT INFORMATION PACKET



Model No: C145T34NB1E

Catalog No: 120378.00

2HP..3450RPM.145.TENV.208-230/460V.3PH.60HZ.AIROVER.NOT.40C.1.0SF.RIGID.AG - FAN & BLOWER.C145T34NB1E

Aeration Fan



Regal and Leeson are trademarks of Regal Beloit Corporation or one of its affiliated companies.

©2018 Regal Beloit Corporation, All Rights Reserved. MC017097E





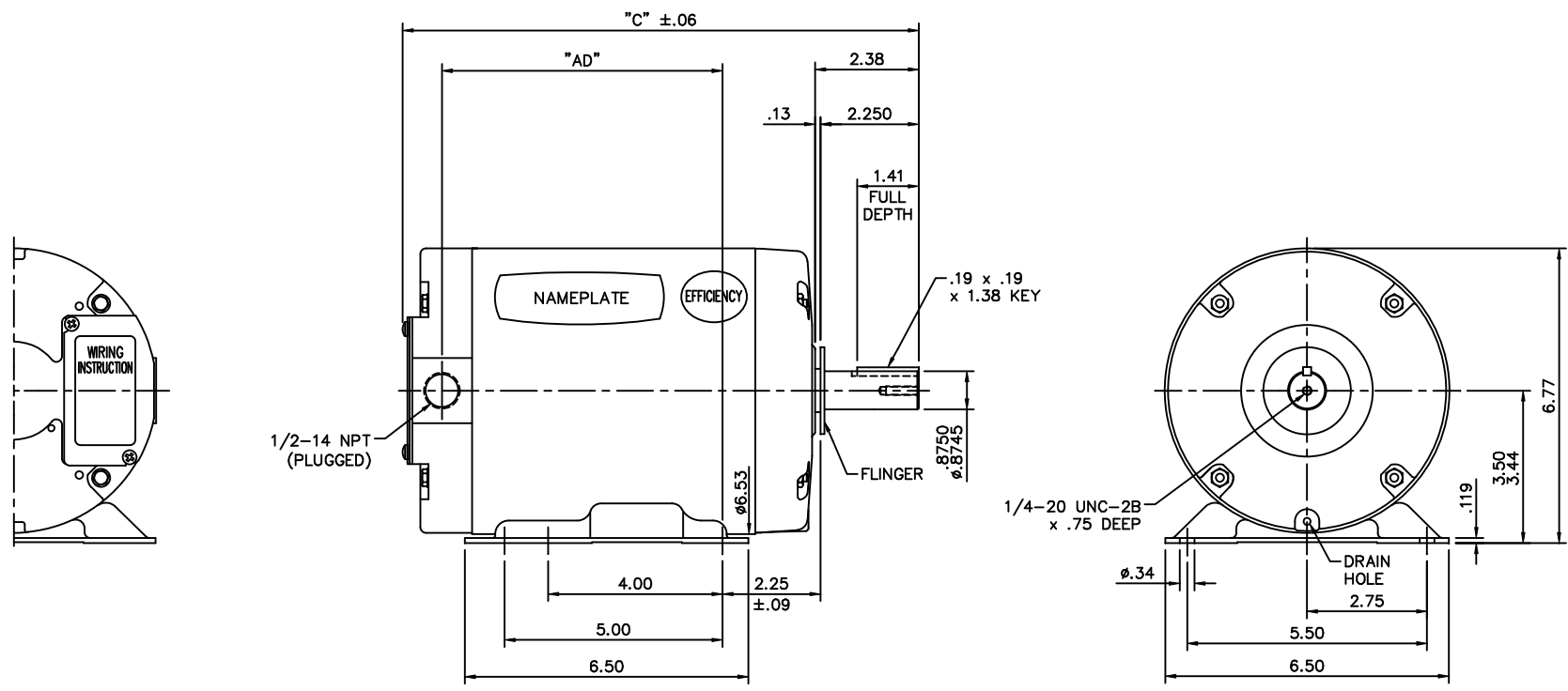
Nameplate Specifications

Output HP	2 Hp	Output KW	1.5 kW
Frequency	60 Hz	Voltage	208-230/460 V
Current	5.8-5.6/2.8 A	Speed	3450 rpm
Service Factor	1	Phase	3
Efficiency	82.5 %	Duty	Continuous
Insulation Class	B	Design Code	B
KVA Code	L	Frame	145TZ
Enclosure	Totally Enclosed Air Over	Overload Protector	No
Ambient Temperature	40 °C	Drive End Bearing Size	6205
Opp Drive End Bearing Size	6203	UL	Recognized
CSA	Y	CE	N
IP Code	43		

Technical Specifications

Electrical Type	Squirrel Cage Induction Run	Starting Method	Across The Line
Poles	2	Rotation	Reversible
Mounting	Rigid base	Motor Orientation	HORIZONTAL
Drive End Bearing	BALL	Opp Drive End Bearing	BALL
Frame Material	Rolled Steel	Shaft Type	Single Special Extension
Overall Length	11.84 in	Frame Length	6.50 in
Shaft Diameter	0.875 in	Shaft Extension	2.25 in
Assembly/Box Mounting	F1 ONLY		
Outline Drawing	034949-675	Connection Diagram	005010.01

This is an uncontrolled document once printed or downloaded and is subject to change without notice. Date Created: 10/15/2018



GASKETS THROUGHOUT

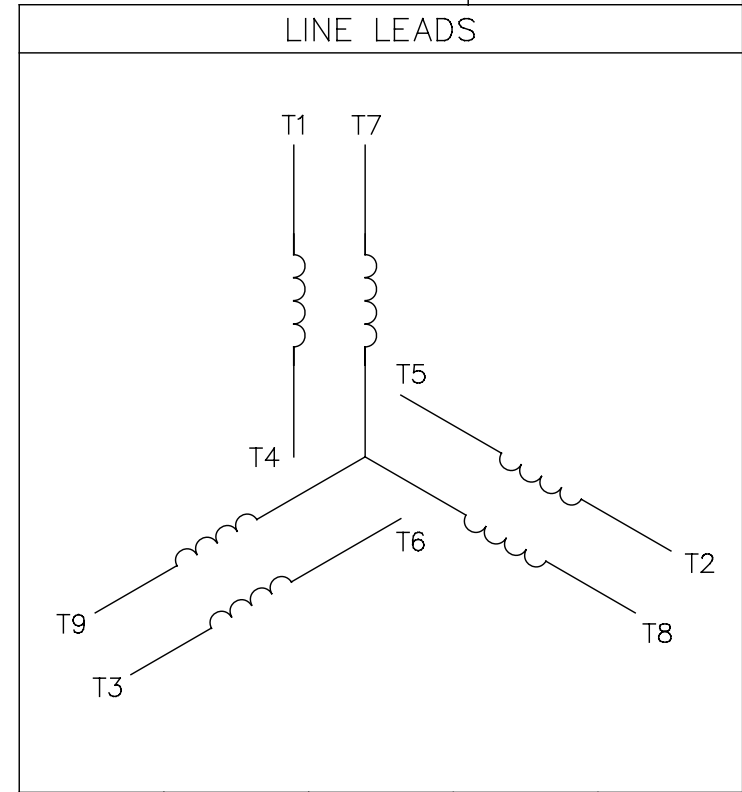
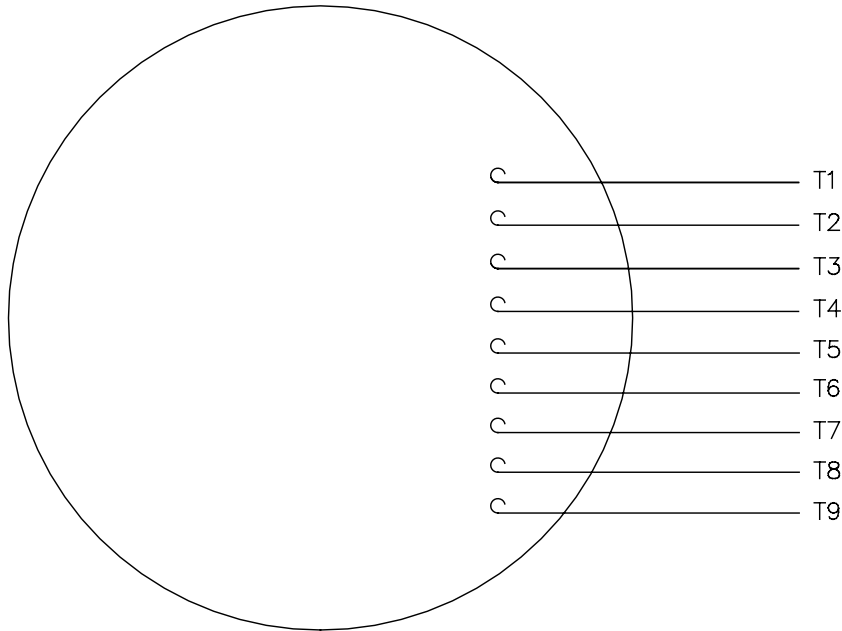
DASH NO.	"C"	"AD"
600	11.34	5.94
650	11.84	6.44
700	12.34	6.94
750	12.84	7.44
800	13.34	7.94

NO.	REVISION	BY & DATE	CHK	ANG	TOLERANCES UNLESS SPECIFIED		FINISH	STOCK	PREV
					DEC.	INCHES			
					.X	±.1			
					.XX	±.03			
					.XXX	±.005			
					.XXXX	±.0005			
						±1/2"			
					RFP		CAD FILE	034949	
					DIST	BRF			

LEESON		ELECTRIC MOTORS GEARMOTORS AND DRIVES	DRAWN GWS 7/31/02
			CHK
			APPD
		TITLE OUTLINE - 140T FRAME TENV - RIGID	SCALE 3=8
		MAT'L FAN DUTY	REF 033388
			FMF 120377
			REV
			DRAWING NO. 034949
			REV. B

005010-01

VIEW FROM OUTSIDE OF MOTOR AT SWITCH END.



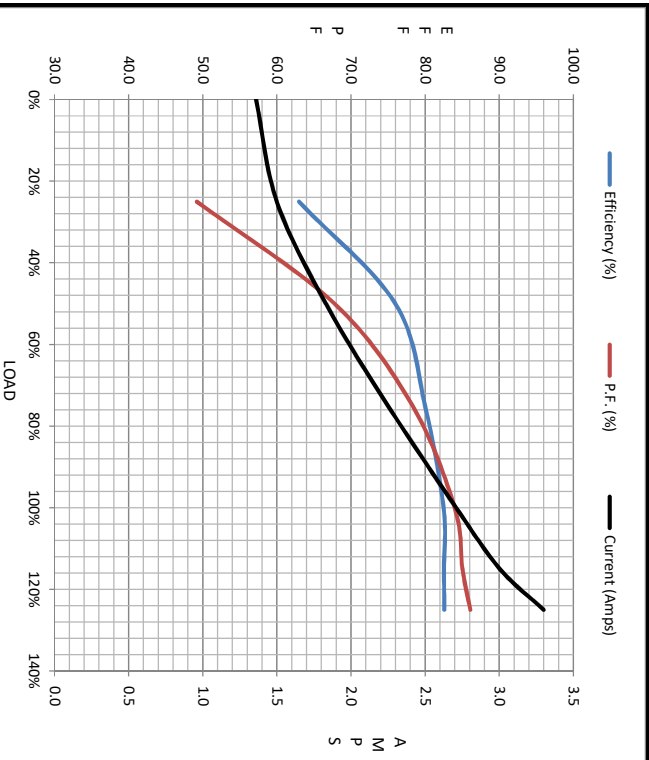
VOLTAGE	L1	L2	L3	JOIN & INSULATE
HIGH	T1	T2	T3	(T4,T7) (T5,T8) (T6,T9)
LOW	T1,T7	T2,T8	T3,T9	T4,T5,T6

				TOLERANCES UNLESS SPECIFIED		Regal Beloit America, Inc.		DRAWN RDW 04/12/02		
				DEC.	INCHES			CHK		
				.X	±.1			APPD		
				.XX	±.01			SCALE 1=1		
				.XXX	±.005	TITLE		REF FIG.2-51		
A	UPDATED TO REGAL LOGO	SAJ 06/26/15	AJY	.XXXX	±.0005	MAT'L. DECAL - 004014		FMF		
NO.	REVISION	BY & DATE	CHK	ANG	±1/2"	FINISH		PREV		
THIS DRAWING IN DESIGN AND DETAIL IS OUR PROPERTY AND MUST NOT BE USED EXCEPT IN CONNECTION WITH OUR WORK ALL RIGHTS OF DESIGN AND INVENTION ARE RESERVED THIS IS AN ELECTRONICALLY GENERATED DOCUMENT - DO NOT SCALE THIS PRINT				RFP	04/12/02	CAD FILE	00501001	SIZE	DRAWING NO.	REV.
				DIST	BRF-NLV			A	005010-01	A



Motor Load Data									
Load	0%	25%	50%	75%	100%	115%	125%	LR	
Current (Amps)	1.36	1.50	1.83	2.25	2.71	3.0	3.3	25.0	
Torque (ft-lb)	0.00	0.73	1.49	2.24	3.0	3.4	3.8	10.0	
RPM	3600	3573	3550	3525	3499	3488	3471	0	
Efficiency (%)		63.0	76.0	80.0	82.5	82.6	82.6	82.6	
P.F. (%)	13.8	49.2	67.8	78.3	84.0	85.1	86.1	0.0	

Motor Speed Data					Information Block				
LR	Pull-Up	BD	Rated	Idle	HP	Sync. RPM	Frame	Enclosure	Construction
0	400	2500	3499	3600	2.0	3600	140	TENV	NA
25.0	23.0	15.0	2.71	1.36					208-230/460 V
Torque (ft-lb)	10.0	9.8	3.0	0.00					60 Hz
									Design A
									LR Code letter L
									Service Factor 1.15
									Temp Rise @ FL 59 °C
									Duty AIROVER
									Ambient 40 °C
									Elevation 1,000 feet
									Rotor/Shaft wk² 0.06 LB-Ft²
									Ref Wdg T632163 NR
									Sound Pressure @ 1M 999 dBA
									VFD Rating NONE
									Outline Dwg 034949-650
									Conn. Diag 005010.01
									Additional Specifications:
									0
									EQUIV CKT (OHMS / PHASE)
									R1 R2 X1 X2 Xm
									0.0000 0.0000 0.0000 0.0000 0.0000



LR	R1	R2	X1	X2	Xm
0	0.0000	0.0000	0.0000	0.0000	0.0000

