

PRODUCT INFORMATION PACKET



Model No: C143T34NB2E

Catalog No: 120377.00

..11/2HP..3450RPM.143TZ.TENV.208-

230/460V.3PH.60HZ.AIROVER.40C.1.0SF.RIGID.C143T34NB2E.....AG - FAN & BLOWER.NOT.....

Aeration Fan



Regal and Leeson are trademarks of Regal Beloit Corporation or one of its affiliated companies.

©2018 Regal Beloit Corporation, All Rights Reserved. MC017097E





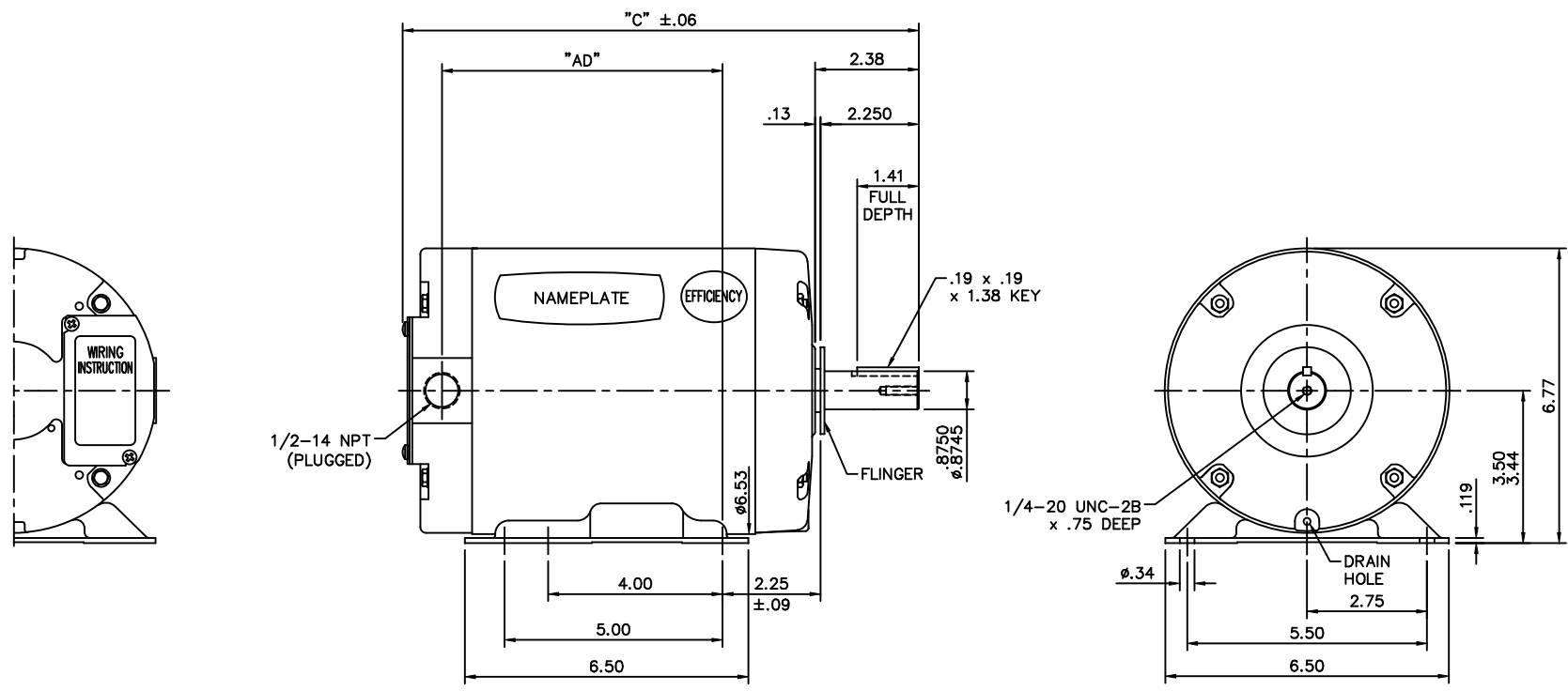
Nameplate Specifications

Output HP	1.50 Hp	Output KW	1.1 kW
Frequency	60 Hz	Voltage	208-230/460 V
Current	4.4-4.2/2.1 A	Speed	3450 rpm
Service Factor	1	Phase	3
Efficiency	82.5 %	Duty	Continuous
Insulation Class	B	Design Code	B
KVA Code	K	Frame	143TZ
Enclosure	Totally Enclosed Air Over	Overload Protector	No
Ambient Temperature	40 °C	Drive End Bearing Size	6205
Opp Drive End Bearing Size	6203	UL	Recognized
CSA	Y	CE	N
IP Code	43		

Technical Specifications

Electrical Type	Squirrel Cage Induction Run	Starting Method	Across The Line
Poles	2	Rotation	Reversible
Mounting	Rigid base	Motor Orientation	HORIZONTAL
Drive End Bearing	BALL	Opp Drive End Bearing	BALL
Frame Material	Rolled Steel	Shaft Type	Single Special Extension
Overall Length	11.34 in	Frame Length	6.00 in
Shaft Diameter	0.875 in	Shaft Extension	2.25 in
Assembly/Box Mounting	F1 ONLY		
Outline Drawing	034949-600	Connection Diagram	005010.01

This is an uncontrolled document once printed or downloaded and is subject to change without notice. Date Created: 10/15/2018



GASKETS THROUGHOUT

DASH NO.	"C"	"AD"
600	11.34	5.94
650	11.84	6.44
700	12.34	6.94
750	12.84	7.44
800	13.34	7.94

NO.	REVISION	BY & DATE	CHK	ANG	TOLERANCES UNLESS SPECIFIED		FINISH	STOCK	PREV	DRAWN	GWS 7/31/02		
					DEC.	INCHES							
					.X	±.1				CHK			
					.XX	±.03	TITLE			APPD			
					.XXX	±.005				SCALE	3=8		
					.XXXX	±.0005	MAT'L			REF	033388		
										FMF	120377		
THIS DRAWING IN DESIGN AND DETAIL IS OUR PROPERTY AND MUST NOT BE USED EXCEPT IN CONNECTION WITH OUR WORK ALL RIGHTS OF DESIGN AND INVENTION ARE RESERVED THIS IS AN ELECTRONICALLY GENERATED DOCUMENT - DO NOT SCALE THIS PRINT								RFP	CAD FILE	034949	SIZE	DRAWING NO.	REV.
								DIST	BRF		B	034949	



ELECTRIC MOTORS
GEARMOTORS
AND DRIVES

TITLE
OUTLINE - 140T FRAME
TENV - RIGID

MAT'L
FAN DUTY

005010-01

VIEW FROM OUTSIDE OF MOTOR AT SWITCH END.



VOLTAGE	L1	L2	L3	JOIN & INSULATE
HIGH	T1	T2	T3	(T4,T7) (T5,T8) (T6,T9)
LOW	T1,T7	T2,T8	T3,T9	T4,T5,T6

				TOLERANCES UNLESS SPECIFIED		Regal Beloit America, Inc.		DRAWN RDW 04/12/02			
				DEC.	INCHES			CHK			
				.X	±.1			APPD			
				.XX	±.01			SCALE 1=1			
				.XXX	±.005	TITLE		REF FIG.2-51			
A	UPDATED TO REGAL LOGO	SAJ 06/26/15	AJY	.XXXX	±.0005	MAT'L.		FMF			
NO.	REVISION	BY & DATE	CHK	ANG	±1/2"	FINISH		PREV			
THIS DRAWING IN DESIGN AND DETAIL IS OUR PROPERTY AND MUST NOT BE USED EXCEPT IN CONNECTION WITH OUR WORK ALL RIGHTS OF DESIGN AND INVENTION ARE RESERVED THIS IS AN ELECTRONICALLY GENERATED DOCUMENT - DO NOT SCALE THIS PRINT				RFP	04/12/02	CAD FILE		00501001	SIZE	DRAWING NO.	REV.
				DIST		BRF-NLV		A	005010-01	A	

Date: 1/29/2018

120377.00



Data @ 460 V

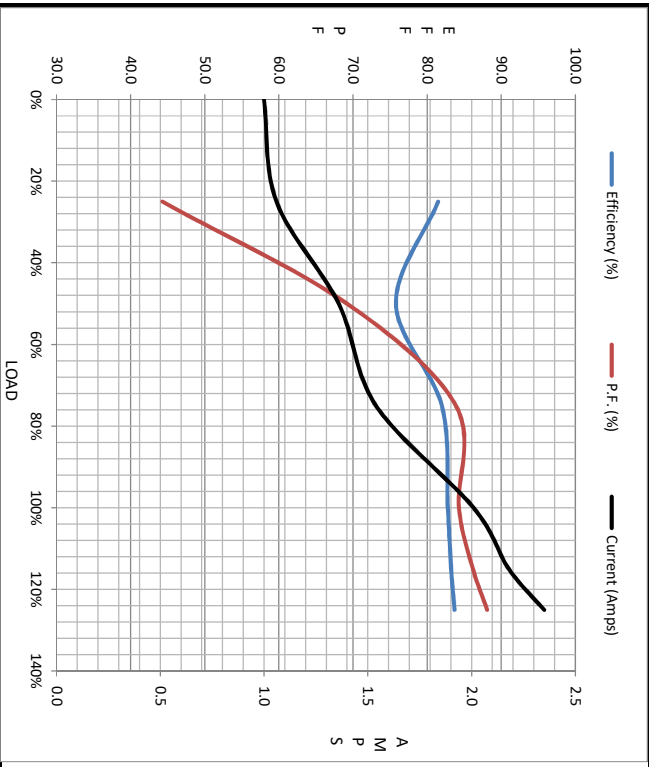
Load	0%	25%	50%	75%	100%	115%	125%	LR
Current (Amps)	1.00	1.06	1.36	1.54	2.01	2.18	2.35	15.0
Torque (ft-lb)	0.00	0.60	1.13	1.69	2.25	2.53	2.81	6.4
RPM	3600	3575	3541	3519	3495	3481	3459	0
Efficiency (%)		81.5	75.8	82.0	82.8	83.3	83.7	
P.F. (%)	11.7	44.3	69.2	83.9	84.3	86.2	88.1	0.0

Motor Speed Data

	LR	Pull-Up	BD	Rated	Idle
Speed (RPM)	0	400	2400	3495	3600
Current (Amps)	15.0	13.8	9.0	2.01	1.00
Torque (ft-lb)	6.4	6.1	8.1	2.25	0.00

Information Block

HP	1.5			
Sync. RPM	3600			
Frame	140			
Enclosure	TENV			
Construction	NA			
Voltage	208-230/460 V			
Frequency	60 Hz			
Design	B			
LR Code letter	K			
Service Factor	1.0			
Temp Rise @ FL	85 °C			
Duty	60 MIN			
Ambient	40 °C			
Elevation	1,000 feet			
Rotor/Shaft wk ²	0.05 LB-Ft ²			
Ref Wdg	T632162 NR			
Sound Pressure @ 1M	0 dBA			
VFD Rating	NONE			
Outline Dwg	034949-600			
Conn. Diag	005010.01			
Additional Specifications:				
0				
EQUIV CKT (OHMS / PHASE)				
R1	R2	X1	X2	Xm
0.0000	0.0000	0.0000	0.0000	0.0000



Speed - Torque Curve

