

# PRODUCT INFORMATION PACKET



Model No: A143C17DB1J

Catalog No: 120000.00

1HP..1740RPM.143.DP./V.1PH.60HZ.CONT.AUTOMATIC.40C.1.15SF.RIGID.GENERAL  
PURPOSE.A143C17DB1J

Open Drip Proof (ODP)



Regal and Leeson are trademarks of Regal Beloit Corporation or one of its affiliated companies.

©2018 Regal Beloit Corporation, All Rights Reserved. MC017097E





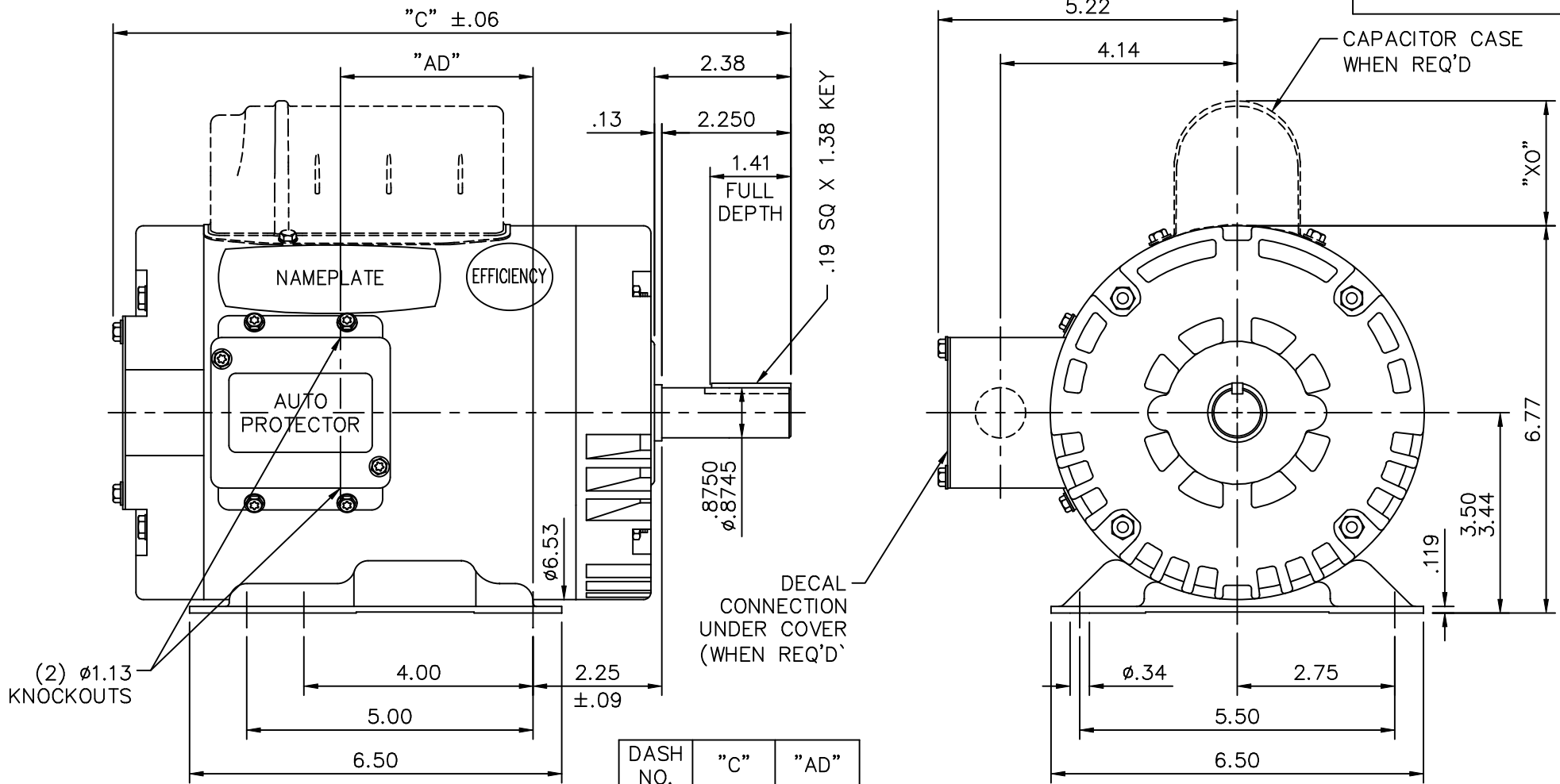
### Nameplate Specifications

Output HP	<b>1 Hp</b>	Output KW	<b>0.75 kW</b>
Frequency	<b>60 Hz</b>	Voltage	<b>115/208-230 V</b>
Current	<b>12.8/6.4 A</b>	Speed	<b>1740 rpm</b>
Service Factor	<b>1.15</b>	Phase	<b>1</b>
Efficiency	<b>75 %</b>	Duty	<b>Continuous</b>
Insulation Class	<b>B</b>	Design Code	<b>L</b>
KVA Code	<b>K</b>	Frame	<b>143T</b>
Enclosure	<b>Drip Proof</b>	Overload Protector	<b>Automatic</b>
Ambient Temperature	<b>40 °C</b>	Drive End Bearing Size	<b>6205</b>
Opp Drive End Bearing Size	<b>6203</b>	UL	<b>Recognized</b>
CSA	<b>Y</b>	CE	<b>N</b>
IP Code	<b>22</b>		

### Technical Specifications

Electrical Type	<b>Capacitor Start Induction Run</b>	Starting Method	<b>Across The Line</b>
Poles	<b>4</b>	Rotation	<b>Selective Counterclockwise</b>
Mounting	<b>Rigid base</b>	Motor Orientation	<b>HORIZONTAL</b>
Drive End Bearing	<b>BALL</b>	Opp Drive End Bearing	<b>BALL</b>
Frame Material	<b>Rolled Steel</b>	Shaft Type	<b>T</b>
Overall Length	<b>11.33 in</b>	Frame Length	<b>6.00 in</b>
Shaft Diameter	<b>0.875 in</b>	Shaft Extension	<b>2.25 in</b>
Assembly/Box Mounting	<b>F1 ONLY</b>		
Outline Drawing	<b>028739-600B</b>	Connection Diagram	<b>005003.01</b>

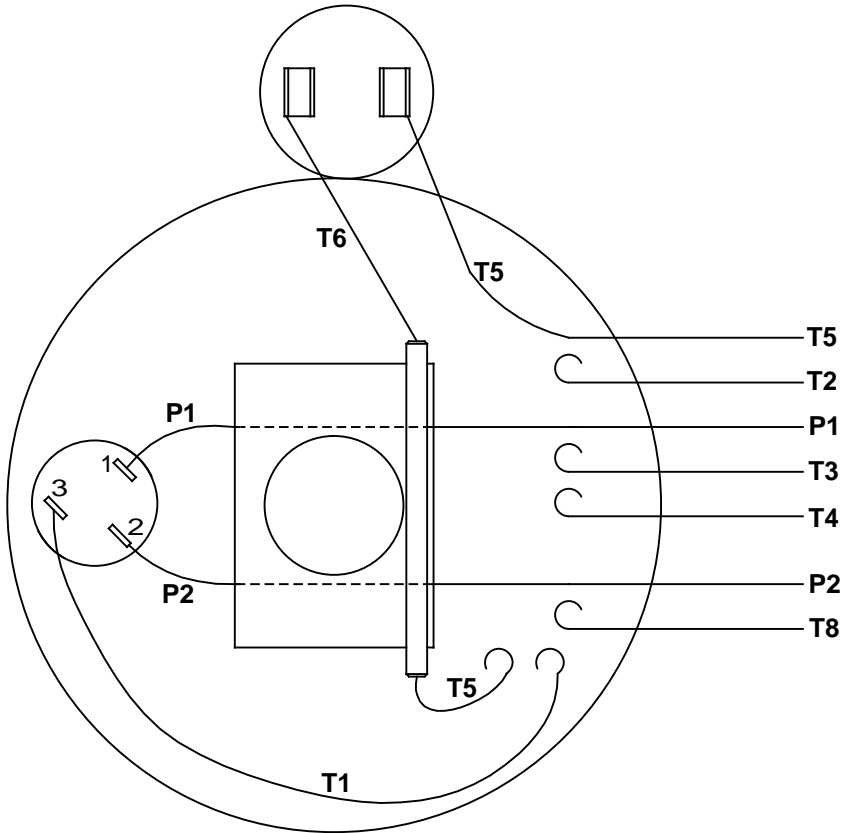
**This is an uncontrolled document once printed or downloaded and is subject to change without notice. Date Created: 10/15/2018**



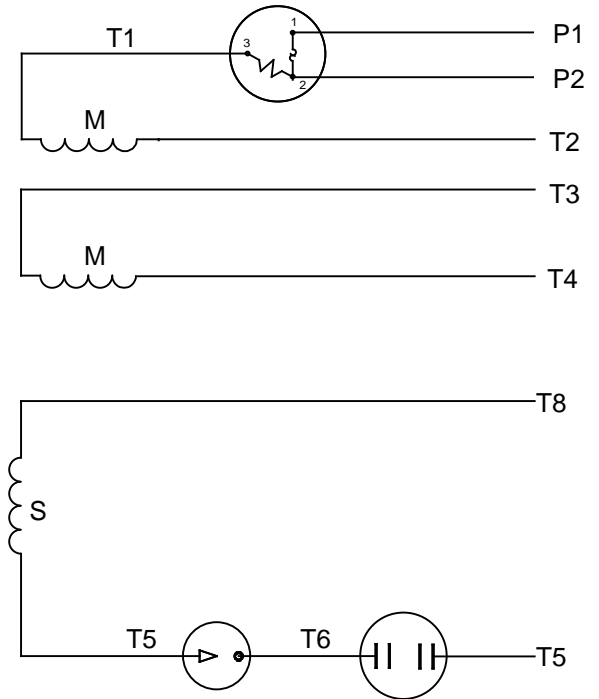
DASH NO.	"C"	"AD"	CAP. DASH	"XO"
600	11.33	2.87	A	1.48
650	11.83	3.37	B	1.95
700	12.33	3.87	C	2.19
750	12.83	4.37		
800	13.33	4.87		
850	13.83	5.37		

				TOLERANCES UNLESS SPECIFIED		ELECTRIC MOTORS GEARMOTORS AND DRIVES TITLE: OUTLINE - 140T FRAME DRIP PROOF - RIGID MAT'L: GENERAL PURPOSE FINISH: STANDARD		DRAWN SW 11/17/05	
				DEC.	INCHES			CHK	
				.X	±.1			APPD RW 11/17/05	
				.XX	±.03			SCALE 3=8	
				.XXX	±.005			REF 033101/034980	
				.XXXX	±.0005	FMF 120000			
NO.	REVISION	BY & DATE	CHK	ANG	±1/2"	PREV			
				RFP	11/17/05	CAD FILE 028739		SIZE A	DRAWING NO. 028739
				DIST BRF-NLV				REV.	

# VIEW FROM OUTSIDE OF MOTOR AT SWITCH END



# LINE LEADS



RBC PROPRIETARY AND CONFIDENTIAL INFORMATION  
 This document is the property of REGAL BELOIT CORPORATION ("RBC") including its subsidiaries and divisions and contains proprietary information of RBC. This document is loaned on the express condition that neither it nor the information contained therein shall be disclosed to others without the express written consent of RBC, and that the information shall be used by the recipient only as approved expressly by RBC. This document shall be returned to RBC upon its request. This document may be subject to certain restrictions under U.S. export control laws and regulations.

	ROTATION FACING LEAD END	L1	L2	JOIN	INSULATE SEPARATELY
HIGH VOLT	C.C.W.	P1	T4 T5	T2,T3 T8	P2
	C.W.	P1	T4 T8	T2,T3 T5	P2
LOW VOLT	C.C.W.	P1	T2,T4 T5	P2,T3 T8	---
	C.W.	P1	T2,T4 T8	P2,T3 T5	---

		TOLERANCES UNLESS SPECIFIED		LEESON	ELECTRIC MOTORS GEARMOTORS AND DRIVES	DRAWN
		DEC	INCHES			ADH 07/25/73
		.X	±.1			CHK
		.XX	±.01			APPR JCW 07/26/77
30	REDRAWN IN SOLIDWORKS	VJB 7/21/2011	.XXX ±.005	TITLE EXTERNAL WIRING DIAGRAM TYPE "C" W/PROTECTOR		SCALE 1:1
29	UPDATED TO CURRENT STANDARDS	DBT 06/30/97	.XXXX ±.0005	MAT'L DECAL - 004011		REF C4AMG1-2.4B
NO	REVISION	BY & DATE	CHK ANG ±1/2°	FINISH		FMF FIG 2-32
THIRD ANGLE PROJECTION			RFP	PREV	SIZE	DRAWING NO
			NETWORK FILE NAME 00500301		A	005003-01
						REV
						30



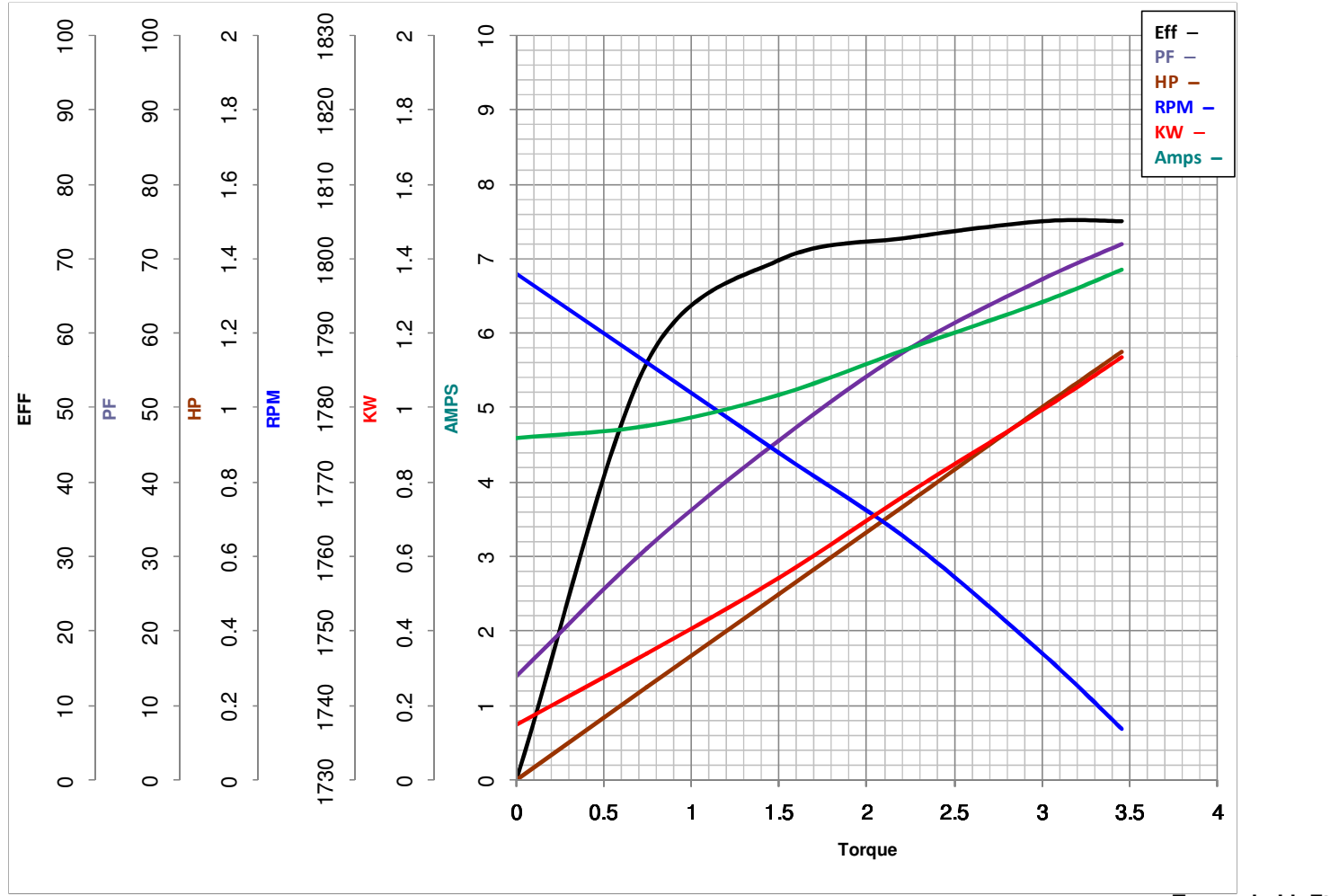
**LEESON ELECTRIC CORPORATION**  
 TYPICAL PERFORMANCE CURVE for AC MOTOR

Model No 120000.00

Catalog No 120000.00

Curve at 230 Volts      HP 1.00      PHASE 1  
60 HZ  
1 HP      VOLTS 115/208-230

HZ 60      RPM 1740



FL TORQUE	<u>3</u>	Lb.Ft	FL AMPS	<u>12.8/6.4</u>
BD TORQUE	<u>6.9</u>	Lb.Ft	PU TORQUE	<u>6.7</u> Lb.Ft
LR TORQUE	<u>9</u>	Lb.Ft	LR AMPS	<u>33</u>
WINDING	C634256-3		Date	3/15/2018