

# PRODUCT INFORMATION PACKET



Model No: C6T34FK136B

Catalog No: 119457.00

119457.00..3HP..3490RPM.56J.TEFC.230/460V.3PH.60HZ.CONT.40C.1.15SF.RIGID C  
FACE.C6T34FK136.....JET PUMP.NONE.....

Jet Pump



Regal and Leeson are trademarks of Regal Beloit Corporation or one of its affiliated companies.

©2018 Regal Beloit Corporation, All Rights Reserved. MC017097E



Product Information Packet: Model No: C6T34FK136B, Catalog No:119457.00  
 119457.00..3HP..3490RPM.56J.TEFC.230/460V.3PH.60HZ.CONT.40C.1.15SF.RIGID C FACE.C6T34FK136.....JET  
 PUMP.NONE.....



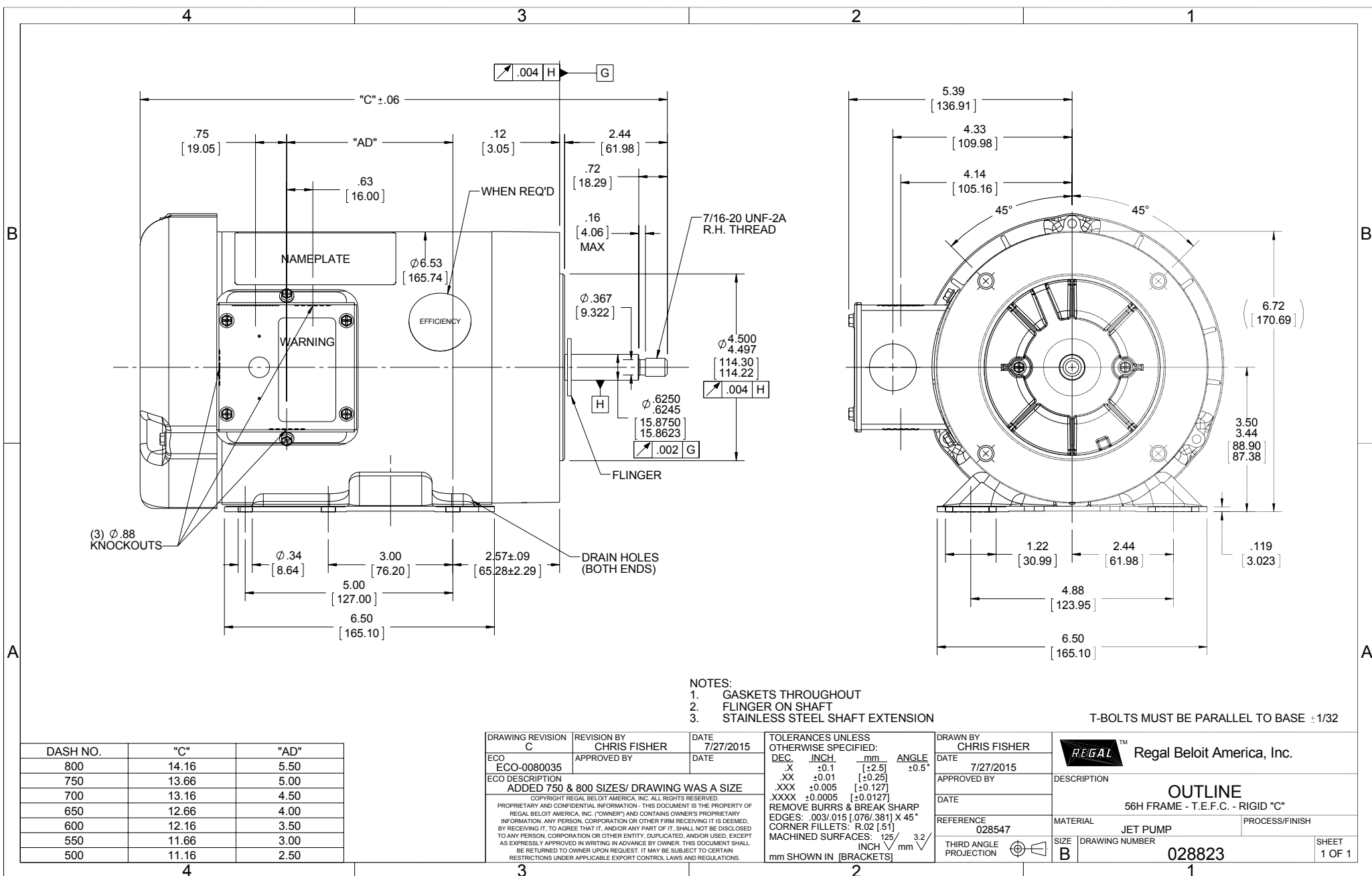
### Nameplate Specifications

Output HP	3 Hp	Output KW	2.2 kW
Frequency	60 Hz	Voltage	230/460 V
Current	8.0/4.0 A	Speed	3490 rpm
Service Factor	1.15	Phase	3
Efficiency	86.5 %	Duty	Continuous
Insulation Class	F	Design Code	B
KVA Code	M	Frame	56HJ
Enclosure	Totally Enclosed Fan Cooled	Overload Protector	No
Ambient Temperature	40 °C	Drive End Bearing Size	6205
Opp Drive End Bearing Size	6203	UL	Recognized
CSA	Y	CE	Y
IP Code	43		

### Technical Specifications

Electrical Type	Squirrel Cage Inverter Rated	Starting Method	Line Or Inverter
Poles	2	Rotation	Reversible
Mounting	Rigid base	Motor Orientation	HORIZONTAL
Drive End Bearing	BALL	Opp Drive End Bearing	BALL
Frame Material	Rolled Steel	Shaft Type	J
Overall Length	14.16 in	Frame Length	8.00 in
Shaft Diameter	0.625 in	Shaft Extension	2.44 in
Assembly/Box Mounting	F1 ONLY		
Outline Drawing	028823-800	Connection Diagram	005010.01

This is an uncontrolled document once printed or downloaded and is subject to change without notice. Date Created: 10/15/2018



- NOTES:  
 1. GASKETS THROUGHOUT  
 2. FLINGER ON SHAFT  
 3. STAINLESS STEEL SHAFT EXTENSION

T-BOLTS MUST BE PARALLEL TO BASE ±1/32

DASH NO.	"C"	"AD"
800	14.16	5.50
750	13.66	5.00
700	13.16	4.50
650	12.66	4.00
600	12.16	3.50
550	11.66	3.00
500	11.16	2.50

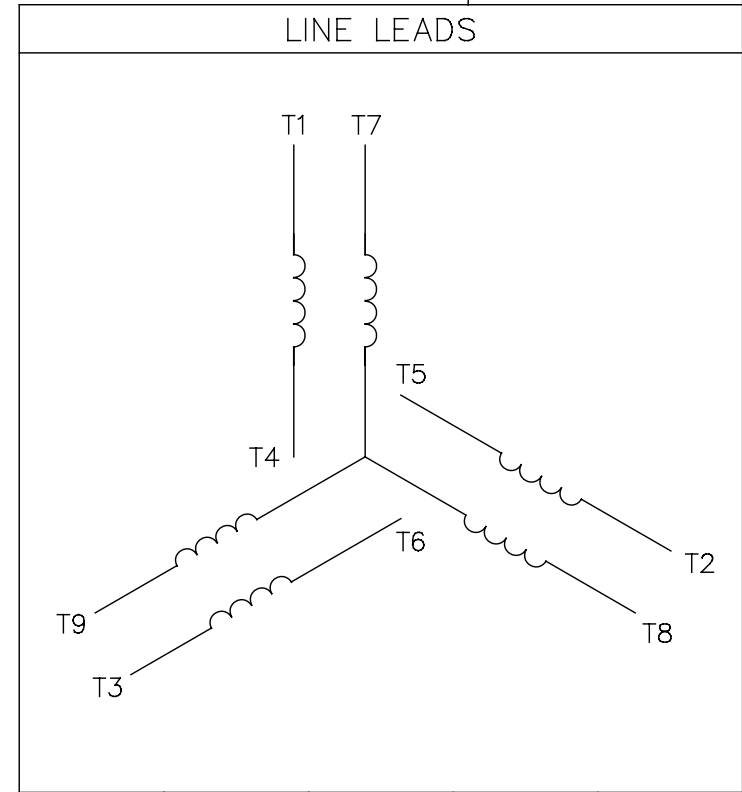
DRAWING REVISION C	REVISION BY CHRIS FISHER	DATE 7/27/2015
ECO ECO-0080035	APPROVED BY	DATE
ECO DESCRIPTION ADDED 750 & 800 SIZES/ DRAWING WAS A SIZE		
<small>COPYRIGHT REGAL BELOIT AMERICA, INC. ALL RIGHTS RESERVED.                  PROPRIETARY AND CONFIDENTIAL INFORMATION - THIS DOCUMENT IS THE PROPERTY OF                  REGAL BELOIT AMERICA, INC. ("OWNER") AND CONTAINS OWNER'S PROPRIETARY                  INFORMATION. ANY PERSON, CORPORATION OR OTHER FIRM RECEIVING IT IS DEEMED,                  BY RECEIVING IT, TO AGREE THAT IT, AND/OR ANY PART OF IT, SHALL NOT BE DISCLOSED                  TO ANY PERSON, CORPORATION OR OTHER ENTITY, DUPLICATED, AND/OR USED, EXCEPT                  AS EXPRESSLY APPROVED IN WRITING IN ADVANCE BY OWNER. THIS DOCUMENT SHALL                  BE RETURNED TO OWNER UPON REQUEST. IT MAY BE SUBJECT TO CERTAIN                  RESTRICTIONS UNDER APPLICABLE EXPORT CONTROL LAWS AND REGULATIONS.</small>		

TOLERANCES UNLESS OTHERWISE SPECIFIED:			
DEC.	INCH	mm	ANGLE
X	+0.1	[+2.5]	±0.5°
.XX	+0.01	[+0.25]	
.XXX	+0.005	[+0.127]	
.XXXX	+0.0005	[+0.0127]	
REMOVE BURRS & BREAK SHARP			
EDGES: .003/.015 [0.076/.381] X 45°			
CORNER FILLETS: R.02 [51]			
MACHINED SURFACES: 125/3.2			
mm SHOWN IN [BRACKETS]			

DRAWN BY CHRIS FISHER	REGAL™ Regal Beloit America, Inc.	
DATE 7/27/2015	DESCRIPTION <b>OUTLINE</b> 56H FRAME - T.E.F.C. - RIGID "C"	
APPROVED BY	MATERIAL JET PUMP	PROCESS/FINISH
DATE	SIZE B	DRAWING NUMBER 028823
REFERENCE 028547	THIRD ANGLE PROJECTION	SHEET 1 OF 1

005010-01

VIEW FROM OUTSIDE OF MOTOR AT SWITCH END.



VOLTAGE	L1	L2	L3	JOIN & INSULATE
HIGH	T1	T2	T3	(T4,T7) (T5,T8) (T6,T9)
LOW	T1,T7	T2,T8	T3,T9	T4,T5,T6

				TOLERANCES UNLESS SPECIFIED		<b>Regal Beloit America, Inc.</b>		DRAWN RDW 04/12/02			
				DEC.	INCHES			CHK			
				.X	±.1			APPD			
				.XX	±.01			SCALE 1=1			
				.XXX	±.005	TITLE		REF FIG.2-51			
A	UPDATED TO REGAL LOGO	SAJ 06/26/15	AJY	.XXXX	±.0005	MAT'L.		FMF			
NO.	REVISION	BY & DATE	CHK	ANG	±1/2"	FINISH		PREV			
THIS DRAWING IN DESIGN AND DETAIL IS OUR PROPERTY AND MUST NOT BE USED EXCEPT IN CONNECTION WITH OUR WORK ALL RIGHTS OF DESIGN AND INVENTION ARE RESERVED THIS IS AN ELECTRONICALLY GENERATED DOCUMENT - DO NOT SCALE THIS PRINT				RFP	04/12/02	CAD FILE		00501001	SIZE	DRAWING NO.	REV.
				DIST		BRF-NLV		A	005010-01	A	



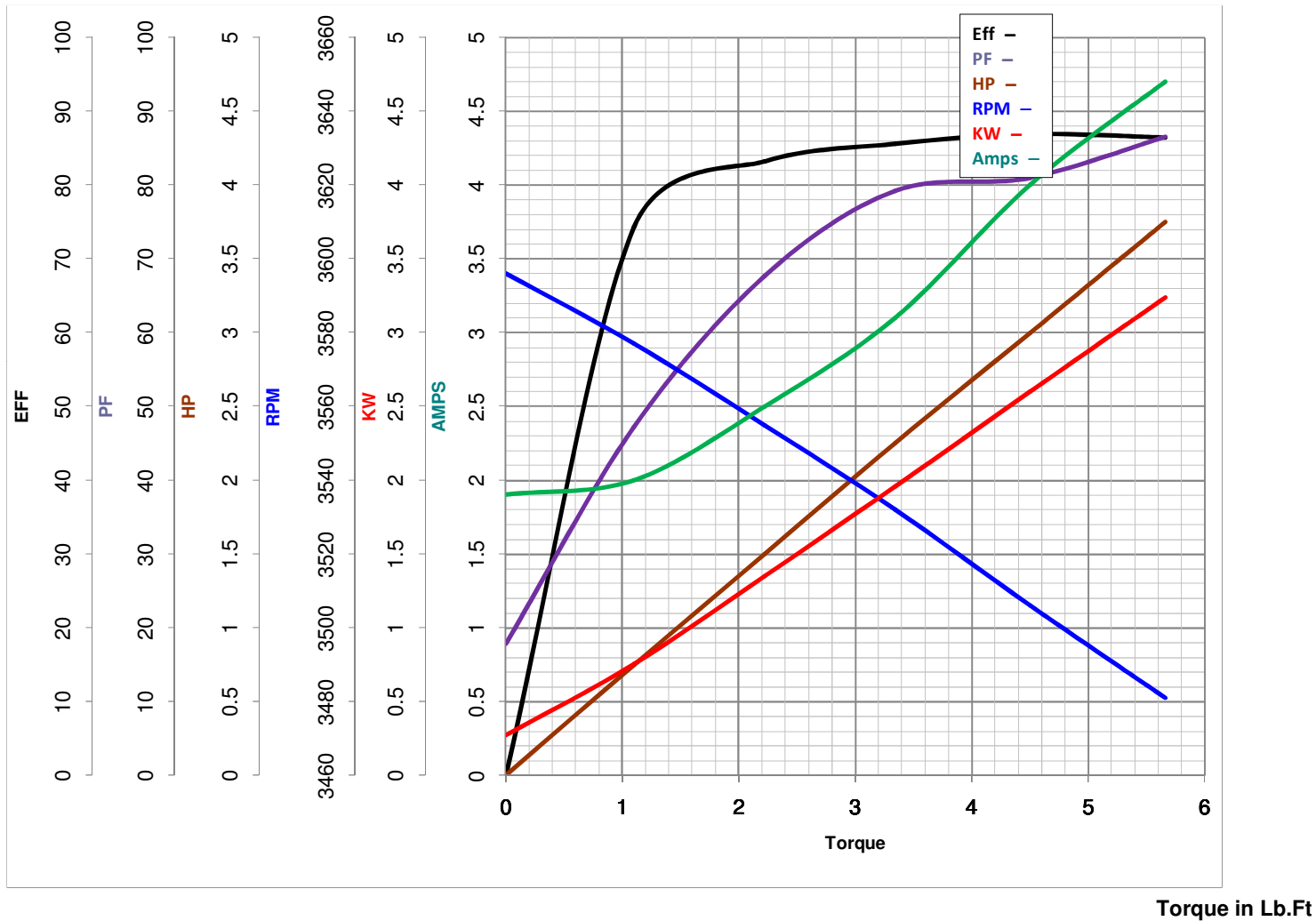
**LEESON ELECTRIC CORPORATION**  
 TYPICAL PERFORMANCE CURVE for AC MOTOR

Model No 119457.00

Catalog No 119457.00

Curve at 460 Volts      HP 3.00      PHASE 3  
60 HZ  
3 HP      VOLTS 208-230/460

HZ 60      RPM 3490



FL TORQUE 4.5 Lb.Ft  
 BD TORQUE 20.8 Lb.Ft  
 LR TORQUE 17.97 Lb.Ft

FL AMPS 8.8-8/4  
 PU TORQUE 17.5 Lb.Ft  
 LR AMPS 41

WINDING T632209-3

Date 5/28/2018