

PRODUCT INFORMATION PACKET



Model No: C6T34FK135B

Catalog No: 119454.00

119454.00..2HP..3490RPM.56J.TEFC.230/460V.3PH.60HZ.CONT.40C.1.15SF.RIGID C
FACE.C6T34FK135.....JET PUMP.NONE.....

Jet Pump



Regal and Leeson are trademarks of Regal Beloit Corporation or one of its affiliated companies.

©2018 Regal Beloit Corporation, All Rights Reserved. MC017097E



Product Information Packet: Model No: C6T34FK135B, Catalog No:119454.00
 119454.00..2HP..3490RPM.56J.TEFC.230/460V.3PH.60HZ.CONT.40C.1.15SF.RIGID C FACE.C6T34FK135.....JET
 PUMP.NONE.....



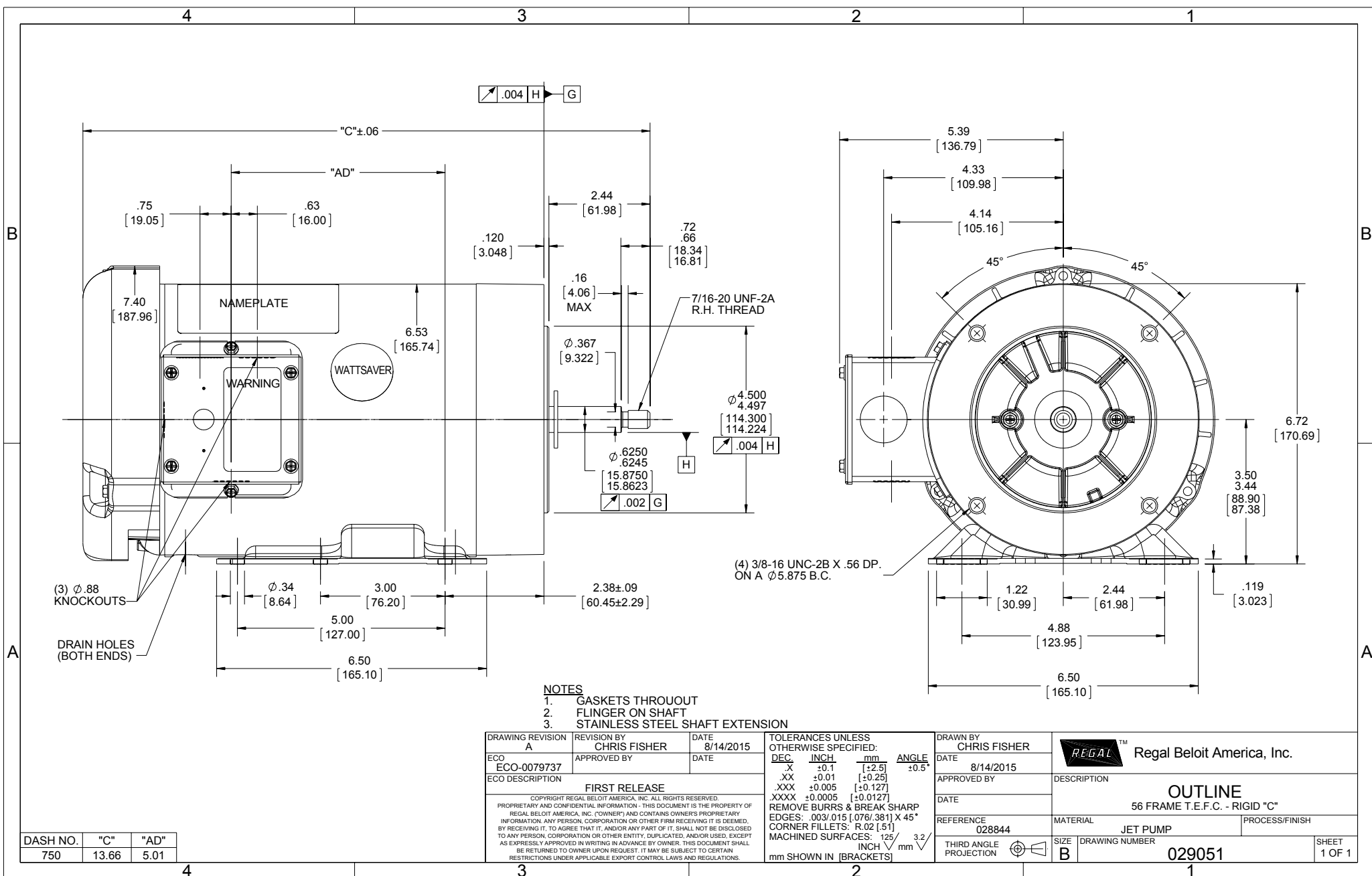
Nameplate Specifications

| | | | |
|----------------------------|-----------------------------|------------------------|---------------|
| Output HP | 2 Hp | Output KW | 1.5 kW |
| Frequency | 60 Hz | Voltage | 208-230/460 V |
| Current | 5.2-4.8/2.4 A | Speed | 3490 rpm |
| Service Factor | 1.15 | Phase | 3 |
| Efficiency | 85.5 % | Duty | Continuous |
| Insulation Class | F | Design Code | B |
| KVA Code | L | Frame | 56J |
| Enclosure | Totally Enclosed Fan Cooled | Overload Protector | No |
| Ambient Temperature | 40 °C | Drive End Bearing Size | 6203 |
| Opp Drive End Bearing Size | 6203 | UL | Recognized |
| CSA | Y | CE | Y |
| IP Code | 43 | | |

Technical Specifications

| | | | |
|-----------------------|------------------------------|-----------------------|------------------|
| Electrical Type | Squirrel Cage Inverter Rated | Starting Method | Line Or Inverter |
| Poles | 2 | Rotation | Reversible |
| Mounting | Rigid base | Motor Orientation | HORIZONTAL |
| Drive End Bearing | BALL | Opp Drive End Bearing | BALL |
| Frame Material | Rolled Steel | Shaft Type | J |
| Overall Length | 13.66 in | Frame Length | 7.50 in |
| Shaft Diameter | 0.625 in | Shaft Extension | 2.44 in |
| Assembly/Box Mounting | F1 ONLY | | |
| Outline Drawing | 029051-750 | Connection Diagram | 005010.01 |

This is an uncontrolled document once printed or downloaded and is subject to change without notice. Date Created: 10/15/2018



- NOTES**
1. GASKETS THROUGHT
 2. FLINGER ON SHAFT
 3. STAINLESS STEEL SHAFT EXTENSION

| | | |
|---|-----------------------------|-------------------|
| DRAWING REVISION A | REVISION BY CHRIS FISHER | DATE 8/14/2015 |
| ECO ECO-0079737 | APPROVED BY | DATE |
| ECO DESCRIPTION FIRST RELEASE | | |
| <small>COPYRIGHT REGAL BELOIT AMERICA, INC. ALL RIGHTS RESERVED. PROPRIETARY AND CONFIDENTIAL INFORMATION - THIS DOCUMENT IS THE PROPERTY OF REGAL BELOIT AMERICA, INC. (OWNER) AND CONTAINS OWNER'S PROPRIETARY INFORMATION. ANY PERSON, CORPORATION OR OTHER FIRM RECEIVING IT IS DEEMED, BY RECEIVING IT, TO AGREE THAT IT, AND/OR ANY PART OF IT, SHALL NOT BE DISCLOSED TO ANY PERSON, CORPORATION OR OTHER ENTITY, DUPLICATED, AND/OR USED, EXCEPT AS EXPRESSLY APPROVED IN WRITING IN ADVANCE BY OWNER. THIS DOCUMENT SHALL BE RETURNED TO OWNER UPON REQUEST. IT MAY BE SUBJECT TO CERTAIN RESTRICTIONS UNDER APPLICABLE EXPORT CONTROL LAWS AND REGULATIONS.</small> | | |

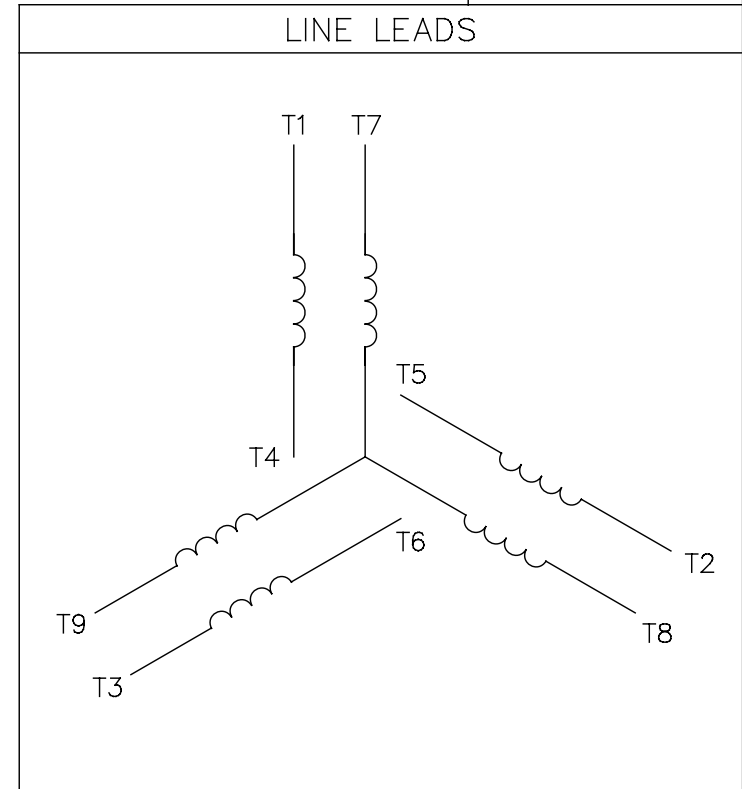
| | | | |
|--|---------|-----------|-------|
| TOLERANCES UNLESS OTHERWISE SPECIFIED: | | | |
| DEC. | INCH | mm | ANGLE |
| X | ±0.1 | [±2.5] | ±0.5° |
| XX | ±0.01 | [±0.25] | |
| .XXX | ±0.005 | [±0.127] | |
| .XXXX | ±0.0005 | [±0.0127] | |
| REMOVE BURRS & BREAK SHARP | | | |
| EDGES: .003/.015 [0.076/3.81] X 45° | | | |
| CORNER FILLETS: R.02 [51] | | | |
| MACHINED SURFACES: 125/3.2 | | | |
| mm SHOWN IN [BRACKETS] | | | |

| | | |
|--------------------------|--|--------------------------|
| DRAWN BY CHRIS FISHER | REGAL™ Regal Beloit America, Inc. | |
| DATE 8/14/2015 | DESCRIPTION OUTLINE 56 FRAME T.E.F.C. - RIGID "C" | |
| APPROVED BY | MATERIAL JET PUMP | PROCESS/FINISH |
| DATE | REFERENCE 028844 | DRAWING NUMBER 029051 |
| THIRD ANGLE PROJECTION | SIZE B | SHEET 1 OF 1 |

| | | |
|----------|-------|------|
| DASH NO. | "C" | "AD" |
| 750 | 13.66 | 5.01 |

005010-01

VIEW FROM OUTSIDE OF MOTOR AT SWITCH END.



| VOLTAGE | L1 | L2 | L3 | JOIN & INSULATE |
|---------|-------|-------|-------|-------------------------------|
| HIGH | T1 | T2 | T3 | (T4,T7) (T5,T8) (T6,T9) |
| LOW | T1,T7 | T2,T8 | T3,T9 | T4,T5,T6 |

| | | | | | | | | | | | |
|--|-----------------------|--------------|-----|--------------------------------|----------|--|--|--------------------|-----------|-------------|------|
| | | | | TOLERANCES UNLESS SPECIFIED | | REGAL ™ Regal Beloit America, Inc. | | DRAWN RDW 04/12/02 | | | |
| | | | | DEC. | INCHES | | | CHK | | | |
| | | | | .X | ±.1 | | | APPD | | | |
| | | | | .XX | ±.01 | | | SCALE 1=1 | | | |
| | | | | .XXX | ±.005 | TITLE | | REF FIG.2-51 | | | |
| A | UPDATED TO REGAL LOGO | SAJ 06/26/15 | AJY | .XXXX | ±.0005 | MAT'L. | | FMF | | | |
| NO. | REVISION | BY & DATE | CHK | ANG | ±1/2" | FINISH | | PREV | | | |
| THIS DRAWING IN DESIGN AND DETAIL IS OUR PROPERTY AND MUST NOT BE USED EXCEPT IN CONNECTION WITH OUR WORK ALL RIGHTS OF DESIGN AND INVENTION ARE RESERVED THIS IS AN ELECTRONICALLY GENERATED DOCUMENT - DO NOT SCALE THIS PRINT | | | | RFP | 04/12/02 | CAD FILE | | 00501001 | SIZE | DRAWING NO. | REV. |
| | | | | DIST | BRF-NLV | | | A | 005010-01 | A | |



P.O. BOX 8003
WAUSAU, WI 54401-8003
PH. 715-675-3311

CERTIFICATION DATA SHEET

DATA VOLTS: 460

CONN. DIAGRAM: 005010.01
OUTLINE: 028844-750
WINDING: T632174

CAT #: 119454.00

FR 3

TYPICAL MOTOR PERFORMANCE DATA

| | | | | | | | | | |
|--------------|-----------------|-------------|---------------|------------------|-------------|------------------|----------|-------------|-------|
| HP | KW | SYNC RPM | FL RPM | FRAME | ENCLOSURE | TYPE | KVA CODE | DESIGN | |
| 2 | 1.5 | 3600 | 3511 | 56J | TEFC | TFR | L | B | |
| PH | HZ | VOLTS | AMPS | START TYPE | DUTY | INSL | S.F. | AMB | ELEV. |
| 3 | 60 | 208-230/460 | 5.2-4.9/2.45 | LINE OR INVERTER | CONT | F | 1.15 | 40 | 3300 |
| F.L. EFF | 87.1 | 3/4 LD EFF | 86.7 | 1/2 LD EFF | 85.5 | GTD EFF | 0.0 | ELECT. TYPE | |
| F.L. PF | 88.4 | 3/4 LD PF | 82.1 | 1/2 LD PF | 72.2 | SQ CAGE INVERTED | | | |
| F.L. TORQUE | LR AMPS @ 460 V | L.R. TORQUE | B.D. TORQUE | | | F.L. RISE (°C) | | | |
| 3.0 LB-FT | 26.0 | 10.8 LB-FT | 360% | 13.0 LB-FT | 433% | 46 | | | |
| PRESSURE @ 3 | POWER | ROTOR WK² | MAX. LOAD WK² | SAFE STALL TIME | STARTS/HOUR | MOTOR WGT | | | |
| 0 DBA | 9 DBA | 0.08 LB-FT² | 0.1 LB-FT² | 10 SEC. | 0 | 0 LB. | | | |

*** SUPPLEMENTAL INFORMATION ***

| | | | | | | | | |
|-----------------|------------------|--------------|-------------------|--------------|--------------------------|----------------|---------|------------------|
| DE BRACKET TYPE | ODE BRACKET TYPE | MOUNT TYPE | MOTOR ORIENTATION | SEVERE DUTY | HAZARDOUS LOCATION | DRIIP COVER | SCREENS | PAINT |
| C-FACE | STANDARD | RIGID | HORIZONTAL | NO | NONE | NO | NONE | N - LEESON WATTS |
| BEARINGS | GREASE | SHAFT TYPE | SPECIAL DE | SPECIAL ODE | SHAFT MATERIAL | FRAME MATERIAL | | |
| DE ODE | POLYREX EM | JET PUMP | NONE | NONE | 1144 STRESSPROOF (C-223) | ROLLED STEEL | | |
| BALL BALL | 6203 | 6203 | | | | | | |
| THERMOSTATS | PROTECTORS | WDG RTD's | BRG RTD's | THERMISTORS | CONTROL | SPACE HEATERS | | |
| NONE | NOT | NONE | NONE | NONE | FALSE | NA | | |
| R1 (ohms/ph) | R2 (ohms/ph) | X1 (ohms/ph) | X2 (ohms/ph) | Xm (ohms/ph) | VIBRATION (in/sec) | FLOAT ODE | | |
| 0 | 0 | 0 | 0 | 0 | 0.080 | | | |

| | | | |
|--------------|--|--------------------------------|--|
| * NOT TESTED | | INVERTER TORQUE: VARIABLE 10:1 | |
| | | INV. HP SPEED RANGE: NONE | |
| | | ENCODER: NONE | |
| | | BRAKE: NONE | |
| | | FT-LB: NA | |
| | | VOLTAGE: NONE | |
| | | HZ: NONE | |
| | | UL: Y-(LEESON UL REC) | |

| | |
|-------|-----------|
| DATE: | 1/18/2018 |
|-------|-----------|

Date: 1/18/2018

11945400



Data @ 460 V

Motor Load Data

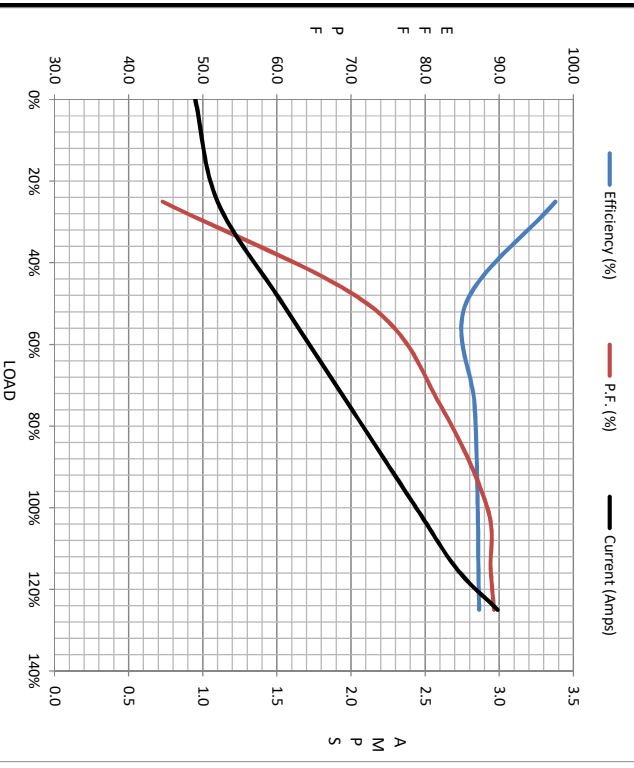
| Load | 0% | 25% | 50% | 75% | 100% | 115% | 125% | LR |
|----------------|------|------|------|------|------|------|------|------|
| Current (Amps) | 0.95 | 1.10 | 1.54 | 1.99 | 2.44 | 2.72 | 2.99 | 26.0 |
| Torque (ft-lb) | 0.00 | 0.75 | 1.50 | 2.25 | 3.0 | 3.4 | 3.8 | 10.8 |
| RPM | 3600 | 3581 | 3555 | 3533 | 3511 | 3501 | 3487 | 0 |
| Efficiency (%) | | 97.6 | 85.5 | 86.7 | 87.1 | 87.2 | 87.3 | 87.3 |
| P.F. (%) | 16.8 | 44.6 | 72.2 | 82.1 | 88.4 | 88.9 | 89.3 | 0.0 |

Motor Speed Data

| | LR | Pull-Up | BD | Rated | Idle |
|----------------|------|---------|------|-------|------|
| Speed (RPM) | 0 | 200 | 2300 | 3511 | 3600 |
| Current (Amps) | 26.0 | 23.9 | 15.6 | 2.44 | 0.95 |
| Torque (ft-lb) | 10.8 | 10.5 | 13.0 | 3.0 | 0.00 |

Information Block

| | | | | |
|-----------------------------|-------------------------|--------|--------|--------|
| HP | 2.0 | | | |
| Sync. RPM | 3600 | | | |
| Frame | 140 | | | |
| Enclosure | TEFC | | | |
| Construction | TFR | | | |
| Voltage | 208-230/460 V | | | |
| Frequency | 60 Hz | | | |
| Design | A | | | |
| LR Code letter | L | | | |
| Service Factor | 1.15 | | | |
| Temp Rise @ FL | 46 °C | | | |
| Duty | CONT | | | |
| Ambient | 40 °C | | | |
| Elevation | 1,000 feet | | | |
| Rotor/Shaft wk ² | 0.08 LB-Ft ² | | | |
| Ref Wdg | T632174 FR | | | |
| Sound Pressure @ 1M | 0 dbA | | | |
| VFD Rating | VARIABLE 10:1 | | | |
| Outline Dwg | 028944-750 | | | |
| Conn. Diag | 005010.01 | | | |
| Additional Specifications: | | | | |
| 0 | | | | |
| EQUIV CKT (OHMS / PHASE) | | | | |
| R1 | R2 | X1 | X2 | Xm |
| 0.0000 | 0.0000 | 0.0000 | 0.0000 | 0.0000 |



Speed - Torque Curve

