

PRODUCT INFORMATION PACKET



Model No: C6T34FC124A

Catalog No: 119453.00

119453.00..1.5HP..3490RPM.56J.TEFC.230/460V.3PH.60HZ.CONT.40C.1.15SF.C
FACE.C6T34FC124.....JET PUMP.NONE.....

Jet Pump



Regal and Leeson are trademarks of Regal Beloit Corporation or one of its affiliated companies.

©2018 Regal Beloit Corporation, All Rights Reserved. MC017097E



Product Information Packet: Model No: C6T34FC124A, Catalog No:119453.00
 119453.00..1.5HP..3490RPM.56J.TEFC.230/460V.3PH.60HZ.CONT.40C.1.15SF.C FACE.C6T34FC124.....JET
 PUMP.NONE.....



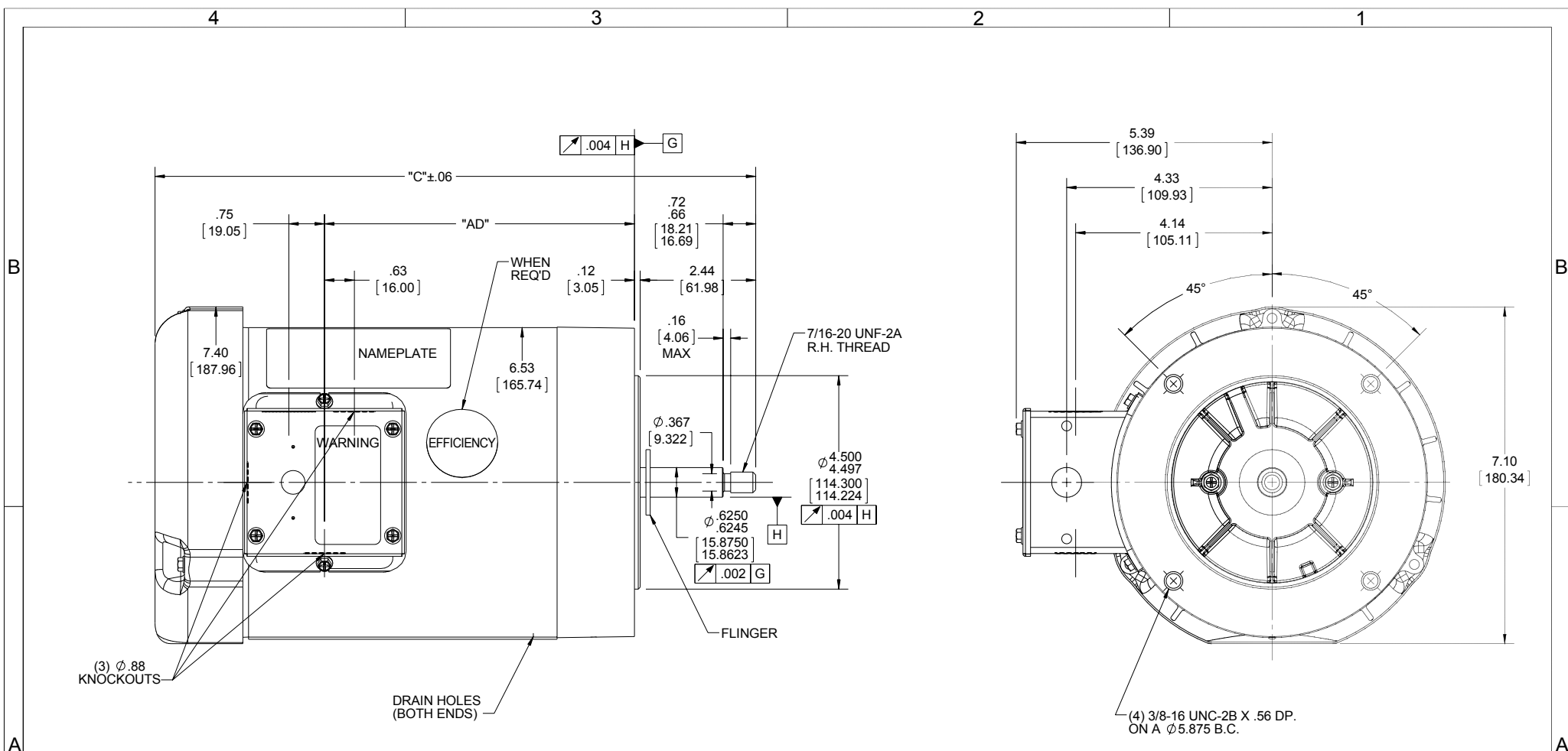
Nameplate Specifications

Output HP	1.50 Hp	Output KW	1.1 kW
Frequency	60 Hz	Voltage	230/460 V
Current	4.0/2.0 A	Speed	3490 rpm
Service Factor	1.15	Phase	3
Efficiency	84 %	Duty	Continuous
Insulation Class	F	Design Code	B
KVA Code	M	Frame	56J
Enclosure	Totally Enclosed Fan Cooled	Overload Protector	No
Ambient Temperature	40 °C	Drive End Bearing Size	6205
Opp Drive End Bearing Size	6203	UL	Recognized
CSA	Y	CE	Y
IP Code	43		

Technical Specifications

Electrical Type	Squirrel Cage Inverter Rated	Starting Method	Line Or Inverter
Poles	2	Rotation	Reversible
Mounting	Round	Motor Orientation	HORIZONTAL
Drive End Bearing	BALL	Opp Drive End Bearing	BALL
Frame Material	Rolled Steel	Shaft Type	J
Overall Length	12.66 in	Frame Length	6.50 in
Shaft Diameter	0.625 in	Shaft Extension	2.44 in
Assembly/Box Mounting	F1 ONLY		
Outline Drawing	028824-650	Connection Diagram	005010.01

This is an uncontrolled document once printed or downloaded and is subject to change without notice. Date Created: 10/15/2018



- NOTES:
 1. GASKETS THROUGHOUT
 2. FLINGER ON SHAFT
 3. STAINLESS STEEL SHAFT EXTENSION

DASH NO.	"C"	"AD"
800	14.16	7.07
750	13.66	7.57
700	13.16	6.07
650	12.66	6.57
600	12.16	7.07
550	11.66	7.57
500	11.16	8.07

DRAWING REVISION C	REVISION BY CHRIS FISHER	DATE 8/3/2015
ECO ECO-0079931	APPROVED BY	DATE
ECO DESCRIPTION ADDED ITEM # 750 & #800		
<small>COPYRIGHT REGAL BELOIT AMERICA, INC. ALL RIGHTS RESERVED. PROPRIETARY AND CONFIDENTIAL INFORMATION - THIS DOCUMENT IS THE PROPERTY OF REGAL BELOIT AMERICA, INC. ("OWNER") AND CONTAINS OWNER'S PROPRIETARY INFORMATION. ANY PERSON, CORPORATION OR OTHER FIRM RECEIVING IT IS DEEMED, BY RECEIVING IT, TO AGREE THAT IT, AND/OR ANY PART OF IT, SHALL NOT BE DISCLOSED TO ANY PERSON, CORPORATION OR OTHER ENTITY, DUPLICATED, AND/OR USED, EXCEPT AS EXPRESSLY APPROVED IN WRITING IN ADVANCE BY OWNER. THIS DOCUMENT SHALL BE RETURNED TO OWNER UPON REQUEST. IT MAY BE SUBJECT TO CERTAIN RESTRICTIONS UNDER APPLICABLE EXPORT CONTROL LAWS AND REGULATIONS.</small>		

TOLERANCES UNLESS OTHERWISE SPECIFIED:			
DEC.	INCH	mm	ANGLE
.X	+0.1	[+2.5]	±0.5°
.XX	+0.01	[+0.25]	
.XXX	+0.005	[+0.127]	
.XXXX	+0.0005	[+0.0127]	
REMOVE BURRS & BREAK SHARP			
EDGES: .003/.015 [076/.381] X 45°			
CORNER FILLETS: R.02 [51]			
MACHINED SURFACES: 125/3.2			
mm SHOWN IN [BRACKETS]			

DRAWN BY CHRIS FISHER
DATE 8/3/2015
APPROVED BY
DATE
REFERENCE 028544
THIRD ANGLE PROJECTION

Regal Beloit America, Inc.	
DESCRIPTION	OUTLINE
	56 FRAME - T.E.F.C. - "C" FACE
MATERIAL	JET PUMP
PROCESS/FINISH	
SIZE	B
DRAWING NUMBER	028824
SHEET	1 OF 1

005010-01

VIEW FROM OUTSIDE OF MOTOR AT SWITCH END.



VOLTAGE	L1	L2	L3	JOIN & INSULATE
HIGH	T1	T2	T3	(T4,T7) (T5,T8) (T6,T9)
LOW	T1,T7	T2,T8	T3,T9	T4,T5,T6

				TOLERANCES UNLESS SPECIFIED		REGAL ™ Regal Beloit America, Inc.		DRAWN RDW 04/12/02			
				DEC.	INCHES			CHK			
				.X	±.1			APPD			
				.XX	±.01			SCALE 1=1			
				.XXX	±.005	TITLE		REF FIG.2-51			
A	UPDATED TO REGAL LOGO	SAJ 06/26/15	AJY	.XXXX	±.0005	MAT'L.		FMF			
NO.	REVISION	BY & DATE	CHK	ANG	±1/2"	FINISH		PREV			
THIS DRAWING IN DESIGN AND DETAIL IS OUR PROPERTY AND MUST NOT BE USED EXCEPT IN CONNECTION WITH OUR WORK ALL RIGHTS OF DESIGN AND INVENTION ARE RESERVED THIS IS AN ELECTRONICALLY GENERATED DOCUMENT - DO NOT SCALE THIS PRINT				RFP	04/12/02	CAD FILE		00501001	SIZE	DRAWING NO.	REV.
				DIST	BRF-NLV			A	005010-01	A	



P.O. BOX 8003
WAUSAU, WI 54401-8003
PH. 715-675-3311

DATA VOLTS: 460

CERTIFICATION DATA SHEET

CONN. DIAGRAM: 005010.01
OUTLINE: 028824-650
WINDING: T632173

CAT #: 119453.00

FR 3

TYPICAL MOTOR PERFORMANCE DATA

HP	KW	SYNC RPM	FL RPM	FRAME	ENCLOSURE	TYPE	KVA CODE	DESIGN	
1.5	1.1	3600	3500	56J	TEFC	TFR	M	B	
PH	HZ	VOLTS	AMPS	START TYPE	DUTY	INSL	S.F.	AMB	ELEV.
3	60/50	230/460#190/380	4.05/2.05#3.6/1.8	LINE OR INVERTER	CONT	F	1.15	40	3300
F.L. EFF	84.0	3/4 LD EFF	81.9	1/2 LD EFF	78.9	GTD EFF	0.0	ELECT. TYPE	
F.L. PF	83.6	3/4 LD PF	76.5	1/2 LD PF	64.7	SQ CAGE INVERTED			
F.L. TORQUE	LR AMPS @ 460 V	20.1	8.9	LB-FT	396%	B.D. TORQUE	10.7	LB-FT	476%
2.25	LB-FT							50	F.L. RISE (°C)
PRESSURE @3	POWER	ROTOR WK²	MAX. LOAD WK²	SAFE STALL TIME	STARTS/HOUR	MOTOR WGT			
0	DBA	9	DBA	0.06	LB-FT²	0.1	LB-FT²	10	SEC.

***** SUPPLEMENTAL INFORMATION *****

DE BRACKET TYPE	ODE BRACKET TYPE	MOUNT TYPE	MOTOR ORIENTATION	SEVERE DUTY	HAZARDOUS LOCATION	DRIP COVER	SCREENS	PAINT
C-FACE	STANDARD	ROUND	HORIZONTAL	NO	NONE	NO	NONE	N - LEESON WATTS
BEARINGS	GREASE	SHAFT TYPE	SPECIAL DE	SPECIAL ODE	SHAFT MATERIAL	FRAME MATERIAL		
DE ODE	BALL	POLYREX EM	JET PUMP	NONE	303 STAINLESS (C-501)	ROLLED STEEL		
6205	6203							
THERMOSTATS	PROTECTORS	WDG RTD's	BRG RTD's	THERMISTORS	CONTROL	SPACE HEATERS		
NONE	NOT	NONE	NONE	NONE	FALSE	NA		
R1 (ohms/ph)	R2 (ohms/ph)	X1 (ohms/ph)	X2 (ohms/ph)	Xm (ohms/ph)	VIBRATION (in/sec)	FLOAT ODE		
0	0	0	0	0	0.150			

* N O T E S *		INVERTER TORQUE: CONSTANT 10:1	
		INV. HP SPEED RANGE: NONE	
		ENCODER: NONE	
		BRAKE: NONE	
		FT-LB: NA	
		VOLTAGE: NONE	
		HZ: NONE	
		UL: Y-(LEESON UL REC)	

DATE:	1/31/2018
-------	-----------



Motor Load Data						
Load	0%	25%	50%	75%	100%	LR
Current (Amps)	1.00	1.14	1.39	1.69	2.00	20.1
Torque (ft-lb)	0.00	0.56	1.12	1.68	2.25	8.9
RPM	3600	3570	3549	3535	3500	0
Efficiency (%)		67.6	78.9	81.9	84.0	
P.F. (%)	12.6	46.2	64.7	76.5	83.6	0.0

Motor Speed Data					
	LR	Pull-Up	BD	Rated	Idle
Speed (RPM)	0	220	2200	3500	3600
Current (Amps)	20.1	18.5	16.0	2.00	1.00
Torque (ft-lb)	8.9	8.6	10.7	2.25	0.00

Information Block					
HP	1.5				
Sync. RPM	3600				
Frame	140				
Enclosure	TEFC				
Construction	TFR				
Voltage	230/460#190/380				
Frequency	60				
Design	A				
LR Code letter	M				
Service Factor	1.15				
Temp Rise @ FL	50				
Duty	CONT				
Ambient	40				
Elevation	1,000				
Rotor/Shaft wk ²	0.06				
Ref Wdg	T632173 FR				
Sound Pressure @ 1M	0				
VFD Rating	CONSTANT 10:1				
Outline Dwg	028824-650				
Conn. Diag	005010.01				
Additional Specifications:					
0					
EQUIV CKT (OHMS / PHASE)					
R1	R2	X1	X2	Xm	
0.0000	0.0000	0.0000	0.0000	0.0000	

