

PRODUCT INFORMATION PACKET



Model No: C6C17NK33A

Catalog No: 119217.00

119217.00..1HP..1725RPM.56C.TENV.115/230V.1PH.60HZ.10 MIN.40C.1.0SF.RIGID C
FACE.C6C17NK33.....BOAT HOIST.NONE.....

Paint Free



Regal and Leeson are trademarks of Regal Beloit Corporation or one of its affiliated companies.

©2018 Regal Beloit Corporation, All Rights Reserved. MC017097E



Product Information Packet: Model No: C6C17NK33A, Catalog No:119217.00
 119217.00..1HP..1725RPM.56C.TENV.115/230V.1PH.60HZ.10 MIN.40C.1.0SF.RIGID C FACE.C6C17NK33.....BOAT
 HOIST.NONE.....



Nameplate Specifications

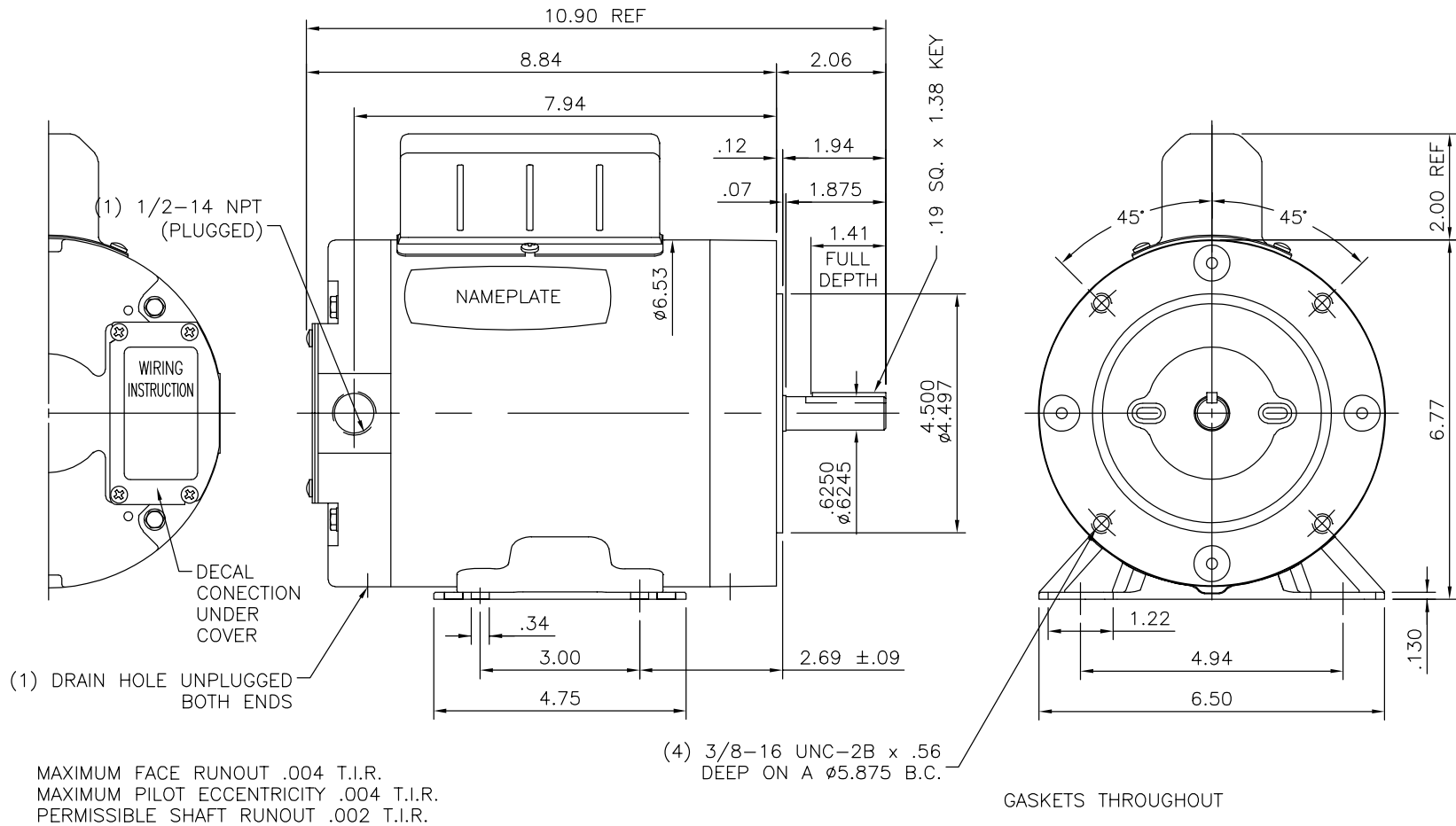
Output HP	1 Hp	Output KW	0.75 kW
Frequency	60 Hz	Voltage	115/208-230 V
Current	12.8/6.4 A	Speed	1725 rpm
Service Factor	1	Phase	1
Efficiency	75 %	Duty	10 Minute
Insulation Class	B	Design Code	N
KVA Code	K	Frame	56C
Enclosure	Totally Enclosed Non Ventilated	Overload Protector	No
Ambient Temperature	40 °C	Drive End Bearing Size	6203
Opp Drive End Bearing Size	6203	UL	Recognized
CSA	Y	CE	N
IP Code	43		

Technical Specifications

Electrical Type	Capacitor Start Induction Run	Starting Method	Across The Line
Poles	4	Rotation	Selective Counterclockwise
Mounting	Rigid base	Motor Orientation	HORIZONTAL
Drive End Bearing	BALL	Opp Drive End Bearing	BALL
Frame Material	Stainless Steel	Shaft Type	NEMA 56
Overall Length	10.90 in	Frame Length	6.00 in
Shaft Diameter	0.625 in	Shaft Extension	1.88 in
Assembly/Box Mounting	F1 ONLY		
Outline Drawing	OL119217	Connection Diagram	005005.01

This is an uncontrolled document once printed or downloaded and is subject to change without notice. Date Created: 10/15/2018

OL119217



			TOLERANCES UNLESS SPECIFIED		LEESON	ELECTRIC MOTORS GEARMOTORS AND DRIVES		DRAWN	PVR
			DEC.	INCHES		TITLE		CHK	JD
			.X	± 1	OUTLINE - 56C FRAME		APPD		
			.XX	± 03	TENV - RIGID "C" FACE		SCALE	NTS	
			.XXX	± 005	MAT'L		REF	OL117497	
			.XXXX	± 0005	FINISH		FMF		
NO.	REVISION	BY & DATE	CHK	ANG	$\pm 1/2'$		PREV		
THIS DRAWING IN DESIGN AND DETAIL IS OUR PROPERTY AND MUST NOT BE USED EXCEPT IN CONNECTION WITH OUR WORK ALL RIGHTS OF DESIGN AND INVENTION ARE RESERVED THIS IS AN ELECTRONICALLY GENERATED DOCUMENT - DO NOT SCALE THIS PRINT			RFP		CAD FILE	OL119217	SIZE	DRAWING NO.	REV.
			DIST				A	OL119217	

VIEW FROM OUTSIDE OF MOTOR AT SWITCH END.



LINE LEADS



RBC PROPRIETARY AND CONFIDENTIAL INFORMATION

This document is the property of REGAL BELOIT CORPORATION ("RBC") including its subsidiaries and divisions and contains proprietary information of RBC. This document is loaned on the express condition that neither it nor the information contained therein shall be disclosed to others without the express written consent of RBC, and that the information shall be used by the recipient only as approved expressly by RBC. This document shall be returned to RBC upon its request. This document may be subject to certain restrictions under U.S. export control laws and regulations.

	ROTATION FACING LEAD END	L1	L2	JOIN
HIGH VOLT	C.C.W.	T1	T4, T5	T2, T3, T8
	C.W.	T1	T4, T8	T2, T3, T5
LOW VOLT	C.C.W.	T1, T3, T8	T2, T4, T5	-----
	C.W.	T1, T3, T5	T2, T4, T8	-----

--	REDRAWN IN SOLIDWORKS	VJB 02/16/11	TOLERANCES UNLESS SPECIFIED			ELECTRIC MOTORS GEARMOTORS AND DRIVES	DRAWN ADH 08/06/73
27	UPDATED TO CURRENT STANDARDS	DBT 05/27/97	DEC	INCHES			CHK
26	ADDED PAGE 32 (114787) & PAGE 33 (114788)	KAZ 12/20/95	PG	.X ±.1			APPR JCW 03/09/79
25	ADDED PAGE 31	KAZ 04/19/95	DL	.XX ±.01	TITLE EXTERNAL WIRING DIAGRAM TYPE "C" W/O PROTECTOR		SCALE 1:1
24	ADDED PAGES 29 & 30	KMM 03/30/95	DL	.XXX ±.005	MAT'L DECAL - 004012		REF FIG 2-23 C4A
23	ADDED PAGE 28	KMM 01/27/95		.XXXX ±.0005	FINISH		FMF MGI-2.4B
NO	REVISION	BY & DATE	CHK	ANG ±1/2°	PAGE OF		
THIRD ANGLE PROJECTION			RFP		PREV	SIZE	DRAWING NO
			NETWORK FILE NAME 00500501			A	005005-01
							REV
							--



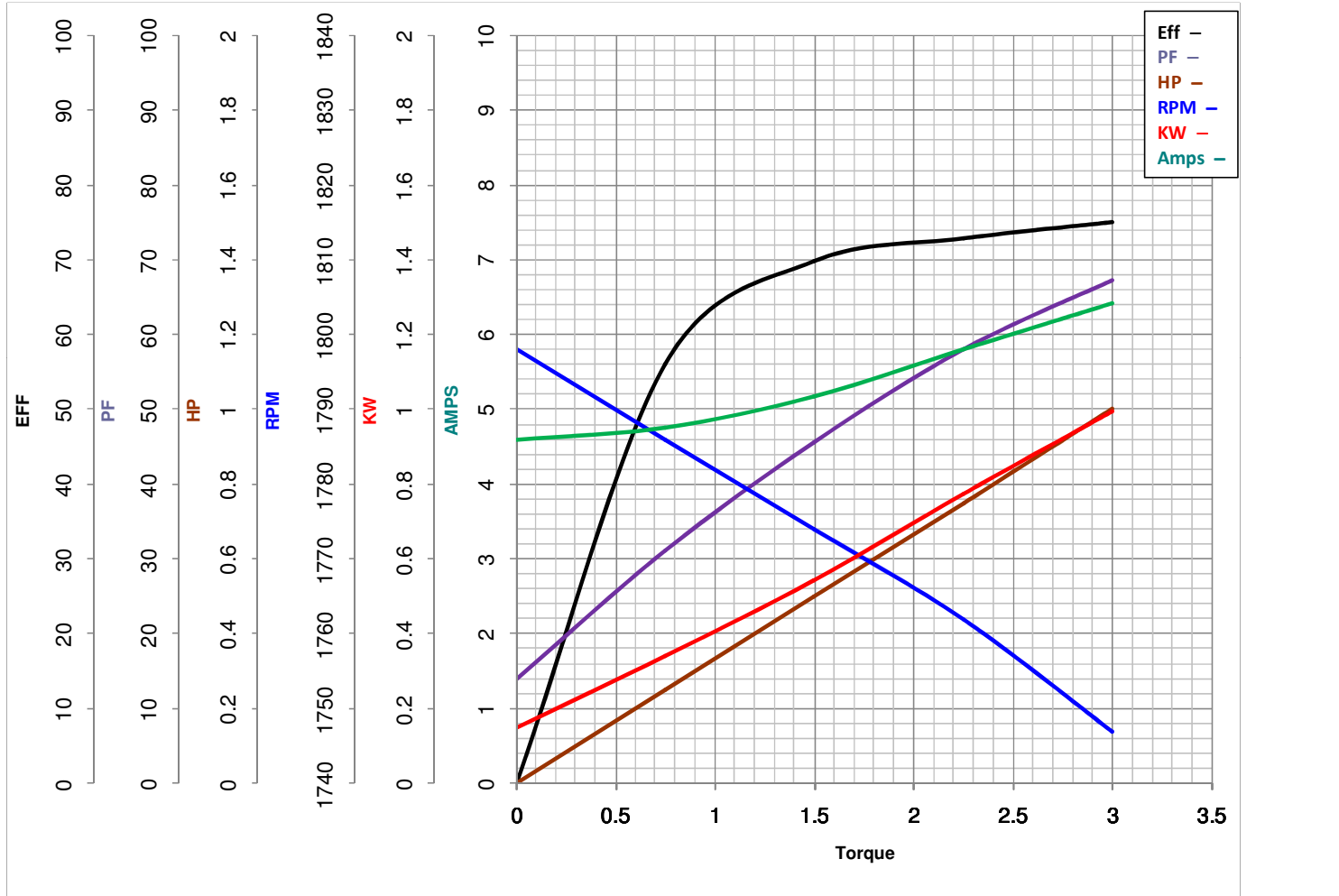
LEESON ELECTRIC CORPORATION
 TYPICAL PERFORMANCE CURVE for AC MOTOR

Model No 119217.00

Catalog No 119217.00

Curve at 230 Volts HP 1.00 PHASE 1
60 HZ
1 HP VOLTS 115/208-230

HZ 60 RPM 1725



Torque in Lb.Ft

FL TORQUE 3 Lb.Ft
 BD TORQUE 6.9 Lb.Ft
 LR TORQUE 9 Lb.Ft

FL AMPS 12.8/6.4
 PU TORQUE 6.7 Lb.Ft
 LR AMPS 33

WINDING C634256-3

Date 3/15/2018