

# PRODUCT INFORMATION PACKET



Model No: C6T34WK12C

Catalog No: 116779.00

..3/4HP..3450RPM.56.TEFC.208-230/460V.3PH.60HZ.CONT.40C.1.15SF.RIGID  
C.C6T34WK12C.....WASHGUARD JET PUMP.NOT.....

Jet Pump



Regal and Leeson are trademarks of Regal Beloit Corporation or one of its affiliated companies.

©2018 Regal Beloit Corporation, All Rights Reserved. MC017097E





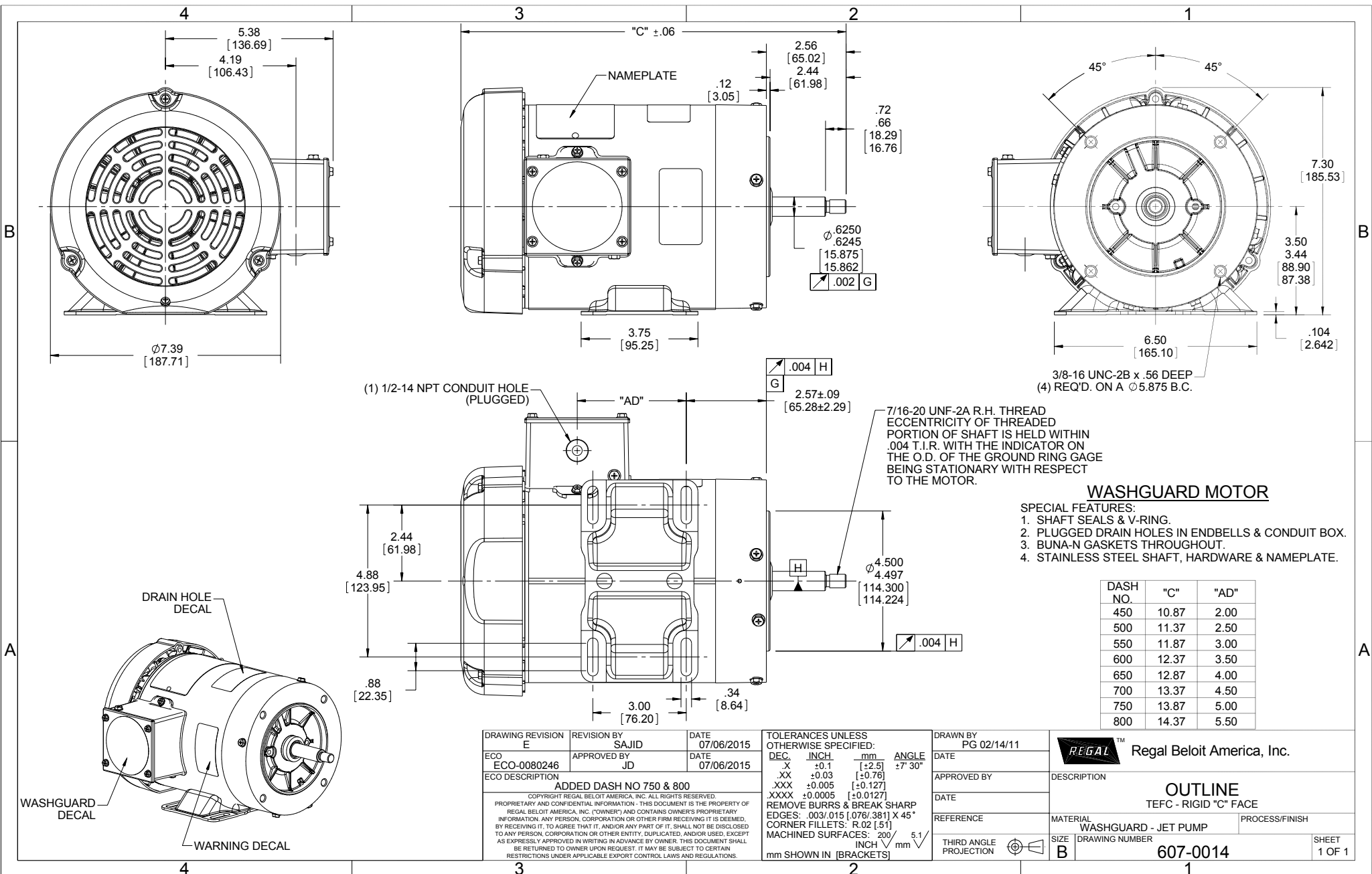
### Nameplate Specifications

Output HP	<b>0.75 Hp</b>	Output KW	<b>0.56 kW</b>
Frequency	<b>60 Hz</b>	Voltage	<b>208-230/460 V</b>
Current	<b>2.5-2.4/1.2 A</b>	Speed	<b>3450 rpm</b>
Service Factor	<b>1.15</b>	Phase	<b>3</b>
Efficiency	<b>75.5 %</b>	Duty	<b>Continuous</b>
Insulation Class	<b>F</b>	Design Code	<b>B</b>
KVA Code	<b>J</b>	Frame	<b>56J</b>
Enclosure	<b>Totally Enclosed Fan Cooled</b>	Overload Protector	<b>No</b>
Ambient Temperature	<b>40 °C</b>	Drive End Bearing Size	<b>6205</b>
Opp Drive End Bearing Size	<b>6203</b>	UL	<b>Recognized</b>
CSA	<b>Y</b>	CE	<b>Y</b>
IP Code	<b>55</b>		

### Technical Specifications

Electrical Type	<b>Squirrel Cage Induction Run</b>	Starting Method	<b>Across The Line</b>
Poles	<b>2</b>	Rotation	<b>Reversible</b>
Mounting	<b>Rigid base</b>	Motor Orientation	<b>HORIZONTAL</b>
Drive End Bearing	<b>BALL</b>	Opp Drive End Bearing	<b>BALL</b>
Frame Material	<b>Rolled Steel</b>	Shaft Type	<b>J</b>
Overall Length	<b>11.37 in</b>	Frame Length	<b>5.00 in</b>
Shaft Diameter	<b>0.625 in</b>	Shaft Extension	<b>2.44 in</b>
Assembly/Box Mounting	<b>F1 ONLY</b>		
Outline Drawing	<b>607-0014-500</b>	Connection Diagram	<b>005010.01</b>

**This is an uncontrolled document once printed or downloaded and is subject to change without notice. Date Created: 10/15/2018**



DRAWING REVISION E  
 ECO ECO-0080246  
 ECO DESCRIPTION  
 REVISION BY SAJID  
 APPROVED BY JD  
 DATE 07/06/2015  
 DATE 07/06/2015  
 ADDED DASH NO 750 & 800  
 COPYRIGHT REGAL BELOIT AMERICA, INC. ALL RIGHTS RESERVED.  
 PROPRIETARY AND CONFIDENTIAL INFORMATION - THIS DOCUMENT IS THE PROPERTY OF REGAL BELOIT AMERICA, INC. ("OWNER") AND CONTAINS OWNER'S PROPRIETARY INFORMATION. ANY PERSON, CORPORATION OR OTHER FIRM RECEIVING IT IS DEEMED, BY RECEIVING IT, TO AGREE THAT IT, AND/OR ANY PART OF IT, SHALL NOT BE DISCLOSED TO ANY PERSON, CORPORATION OR OTHER ENTITY; DUPLICATED, AND/OR USED, EXCEPT AS EXPRESSLY APPROVED IN WRITING IN ADVANCE BY OWNER. THIS DOCUMENT SHALL BE RETURNED TO OWNER UPON REQUEST. IT MAY BE SUBJECT TO CERTAIN RESTRICTIONS UNDER APPLICABLE EXPORT CONTROL LAWS AND REGULATIONS.

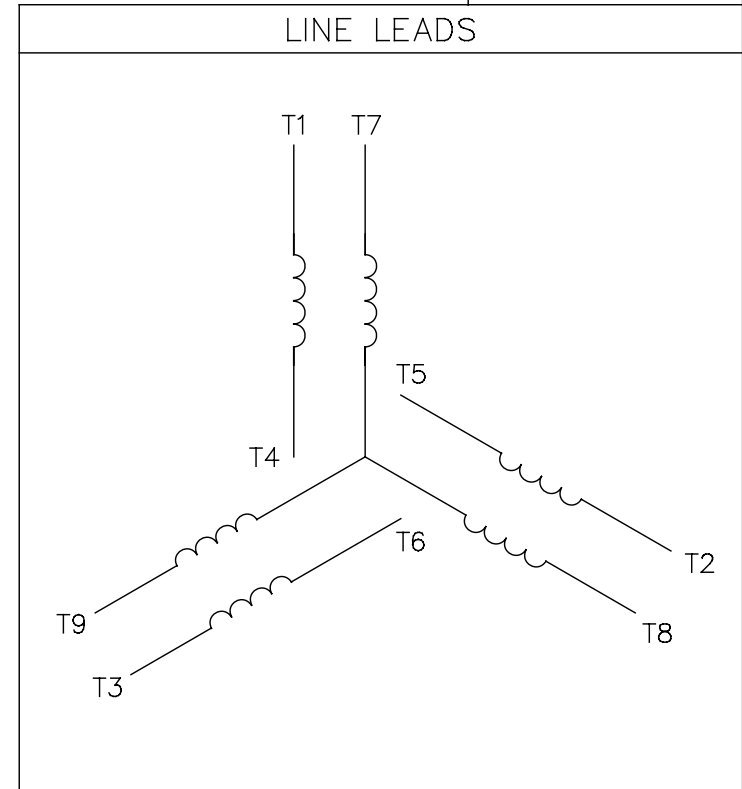
TOLERANCES UNLESS OTHERWISE SPECIFIED:  
 DEC. INCH mm ANGLE  
 .X ±0.1 [+2.5] ±7°-30°  
 .XX ±0.03 [+0.76]  
 .XXX ±0.005 [+0.127]  
 .XXXX ±0.0005 [+0.0127]  
 REMOVE BURRS & BREAK SHARP EDGES: .003/.015 [.076/.381] X 45°  
 CORNER FILLETS: R.02 [.51]  
 MACHINED SURFACES: 200 5.1  
 mm SHOWN IN [BRACKETS] INCH mm

DRAWN BY PG 02/14/11  
 DATE  
 APPROVED BY  
 DATE  
 REFERENCE  
 THIRD ANGLE PROJECTION

REGAL™ Regal Beloit America, Inc.  
 DESCRIPTION  
 OUTLINE  
 TEFC - RIGID "C" FACE  
 MATERIAL WASHGUARD - JET PUMP PROCESS/FINISH  
 SIZE B DRAWING NUMBER 607-0014 SHEET 1 OF 1

005010-01

VIEW FROM OUTSIDE OF MOTOR AT SWITCH END.



VOLTAGE	L1	L2	L3	JOIN & INSULATE
HIGH	T1	T2	T3	(T4,T7) (T5,T8) (T6,T9)
LOW	T1,T7	T2,T8	T3,T9	T4,T5,T6

				TOLERANCES UNLESS SPECIFIED		<b>Regal Beloit America, Inc.</b>		DRAWN RDW 04/12/02			
				DEC.	INCHES			CHK			
				.X	±.1			APPD			
				.XX	±.01			SCALE 1=1			
				.XXX	±.005	TITLE		REF FIG.2-51			
A	UPDATED TO REGAL LOGO		SAJ 06/26/15	AJY	.XXXX ±.0005	MAT'L.		FMF			
NO.	REVISION		BY & DATE	CHK	ANG ±1/2"	FINISH		PREV			
THIS DRAWING IN DESIGN AND DETAIL IS OUR PROPERTY AND MUST NOT BE USED EXCEPT IN CONNECTION WITH OUR WORK ALL RIGHTS OF DESIGN AND INVENTION ARE RESERVED THIS IS AN ELECTRONICALLY GENERATED DOCUMENT - DO NOT SCALE THIS PRINT				RFP	04/12/02	CAD FILE		00501001	SIZE	DRAWING NO.	REV.
						DIST	BRF-NLV			A	005010-01



P.O. BOX 8003  
WAUSAU, WI 54401-8003  
PH. 715-675-3311

DATA VOLTS: 460

CERTIFICATION DATA SHEET

CONN. DIAGRAM: 005010.01  
OUTLINE: 607-0014-500  
WINDING: T632160

CAT #: 116779.00

FR 3

TYPICAL MOTOR PERFORMANCE DATA

HP	KW	SYNC RPM	FL RPM	FRAME	ENCLOSURE	TYPE	KVA CODE	DESIGN	
0.75	0.56	3600	3454	56J	TEFC	TFR	J	B	
PH	HZ	VOLTS	AMPS	START TYPE	DUTY	INSL	S.F.	AMB	ELEV.
3	60/50	208-230/460#190/380	2.5-2.4/1.2&2.1/1.05	ACROSS THE LINE	CONT	F	1.15	40	3300
	F.L. EFF	75.6	3/4 LD EFF	73.5	1/2 LD EFF	68.3	GTD EFF		ELECT. TYPE
	F.L. PF	78.4	3/4 LD PF	70.6	1/2 LD PF	58.9	0.0		SO CAGE IND RUN
	F.L. TORQUE	LR AMPS @ 460 V	L.R. TORQUE		B.D. TORQUE		F.L. RISE (°C)		
	294 LB-FT	7.3	738 LB-FT	251%	1,043 LB-FT	355%	57		
	PRESSURE @3	POWER	ROTOR WK²	MAX. LOAD WK²	SAFE STALL TIME	STARTS/HOUR	MOTOR WGT		
	0 DBA	9 DBA	0.02 LB-FT²	0 LB-FT²	10 SEC.	0	0 LB.		

\*\*\* SUPPLEMENTAL INFORMATION \*\*\*

DE BRACKET TYPE	ODE BRACKET TYPE	MOUNT TYPE	MOTOR ORIENTATION	SEVERE DUTY	HAZARDOUS LOCATION	DRIP COVER	SCREENS	PAINT
C-FACE	STANDARD	RIGID	HORIZONTAL	NO	NONE	NO	NONE	ITE - LEESON (EPO
BEARINGS	GREASE	SHAFT TYPE	SPECIAL DE	SPECIAL ODE	SHAFT	MATERIAL	FRAME MATERIAL	
DE ODE	BALL	POLYREX EM	JET PUMP	NONE	NONE	303 STAINLESS (C-501)	ROLLED STEEL	
6205	6203							
THERMOSTATS	PROTECTORS	WDG RTD's	BRG RTD's	THERMISTORS	CONTROL	SPACE HEATERS		
NONE	NOT	NONE	NONE	NONE	FALSE	NA		
R1 (ohms/ph)	R2 (ohms/ph)	X1 (ohms/ph)	X2 (ohms/ph)	Xm (ohms/ph)	VIBRATION (in/sec)	FLOAT		
0	0	0	0	0	0.080	ODE		

* NOT TESTED		INVERTER TORQUE: NONE	
		INV. HP SPEED RANGE: NONE	
		ENCODER: NONE	
		BRAKE: NONE	
		FT-LB: NA	
		VOLTAGE: NONE	
		UL: Y-(LEESON UL REC)	
		NONE PPR	

DATE:	1/30/2018	HZ:	
-------	-----------	-----	--

Data Sheet

Date: 1/30/2018

116779.00



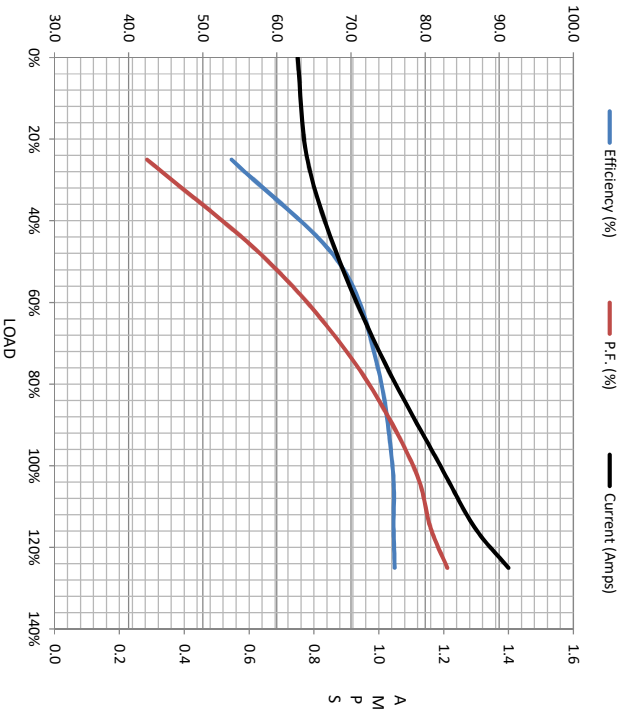
Data @ 460 V

Motor Load Data

Load	0%	25%	50%	75%	100%	115%	125%	LR
Current (Amps)	0.75	0.78	0.88	1.02	1.19	1.30	1.40	7.3
Torque (ft-lb)	0.00	72.2	144	218	294	5,343	372	738
RPM	3600	3559	3528	3492	3454	3436	3410	0
Efficiency (%)		53.9	68.3	73.5	75.6	75.8	75.9	
P.F. (%)	17.6	42.5	58.9	70.6	78.4	80.7	83.0	0.0

Motor Speed Data

	LR	Pull-Up	BD	Rated	Idle	Information Block					
Speed (RPM)	0	400	2600	3454	3600	HP	0.8				
Current (Amps)	7.3	6.7	4.4	1.19	0.75	Sync. RPM	3600				
Torque (ft-lb)	738	706	1,043	294	0.00	Frame	140				
						Enclosure	TEFC				
						Construction	TFR				
						Voltage	208-230/460#190/380				
						Frequency	60				
						Design	B				
						LR Code letter	J				
						Service Factor	1.15				
						Temp Rise @ FL	57				
						Duty	CONT				
						Ambient	40				
						Elevation	1,000				
						Rotor/Shaft wk <sup>2</sup>	0.02				
						Ref Wdg	T632160 FR				
						Sound Pressure @ 1M	0				
						VFD Rating	NONE				
						Outline Dwg	607-0014-500				
						Conn. Diag	005010.01				
						Additional Specifications:					
						EQUIV CKT (OHMS / PHASE)					
						R1	R2	X1	X2	Xm	
						0.0000	0.0000	0.0000	0.0000	0.0000	



Efficiency (%)	P.F. (%)	Current (Amps)
0.0	0.0	0.0
10.0	10.0	10.0
20.0	20.0	20.0
30.0	30.0	30.0
40.0	40.0	40.0
50.0	50.0	50.0
60.0	60.0	60.0
70.0	70.0	70.0
80.0	80.0	80.0
90.0	90.0	90.0
100.0	100.0	100.0
110.0	110.0	110.0
120.0	120.0	120.0
130.0	130.0	130.0
140.0	140.0	140.0

Speed - Torque Curve

