

PRODUCT INFORMATION PACKET



Model No: C6T34WC15C

Catalog No: 116775.00

..1HP..3450RPM.56.TEFC.230/460V.3PH.60HZ.CONT.40C.1.15SF.C FACE.C6T34WC15C.....WASHGUARD
JET PUMP.NOT.....

Jet Pump



Regal and Leeson are trademarks of Regal Beloit Corporation or one of its affiliated companies.

©2018 Regal Beloit Corporation, All Rights Reserved. MC017097E



Product Information Packet: Model No: C6T34WC15C, Catalog No:116775.00
 ..1HP..3450RPM.56.TEFC.230/460V.3PH.60HZ.CONT.40C.1.15SF.C FACE.C6T34WC15C.....WASHGUARD JET
 PUMP.NOT.....



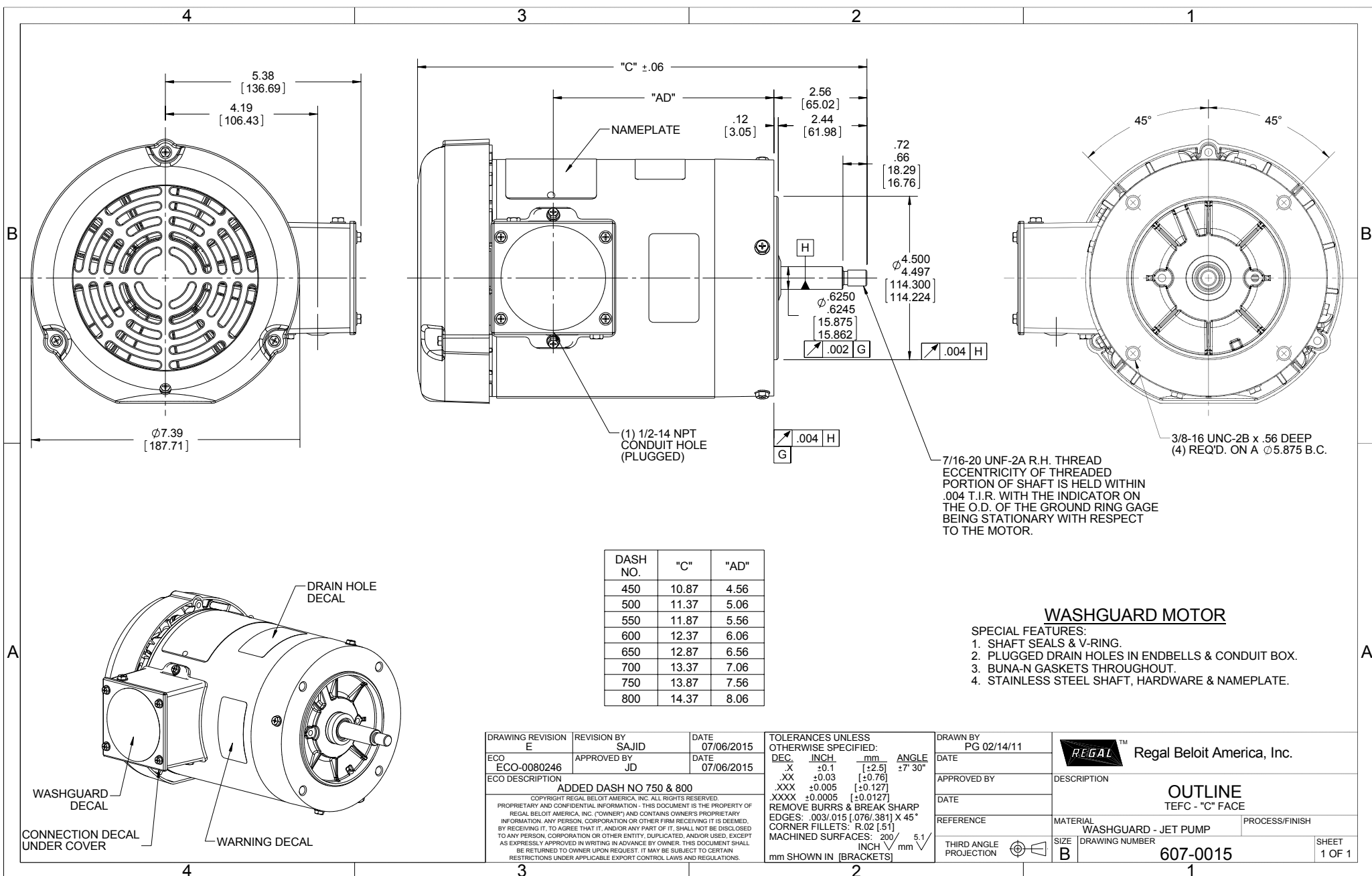
Nameplate Specifications

| | | | |
|----------------------------|------------------------------------|------------------------|-------------------|
| Output HP | 1 Hp | Output KW | 0.75 kW |
| Frequency | 60 Hz | Voltage | 230/460 V |
| Current | 3.2/1.6 A | Speed | 3450 rpm |
| Service Factor | 1.15 | Phase | 3 |
| Efficiency | 77 % | Duty | Continuous |
| Insulation Class | F | Design Code | B |
| KVA Code | J | Frame | 56J |
| Enclosure | Totally Enclosed Fan Cooled | Overload Protector | No |
| Ambient Temperature | 40 °C | Drive End Bearing Size | 6205 |
| Opp Drive End Bearing Size | 6203 | UL | Recognized |
| CSA | Y | CE | Y |
| IP Code | 55 | | |

Technical Specifications

| | | | |
|-----------------------|------------------------------------|-----------------------|------------------------|
| Electrical Type | Squirrel Cage Induction Run | Starting Method | Across The Line |
| Poles | 2 | Rotation | Reversible |
| Mounting | Round | Motor Orientation | HORIZONTAL |
| Drive End Bearing | BALL | Opp Drive End Bearing | BALL |
| Frame Material | Rolled Steel | Shaft Type | J |
| Overall Length | 11.37 in | Frame Length | 5.00 in |
| Shaft Diameter | 0.625 in | Shaft Extension | 2.44 in |
| Assembly/Box Mounting | F1 ONLY | | |
| Outline Drawing | 607-0015-500 | Connection Diagram | 005010.01 |

This is an uncontrolled document once printed or downloaded and is subject to change without notice. Date Created: 10/15/2018

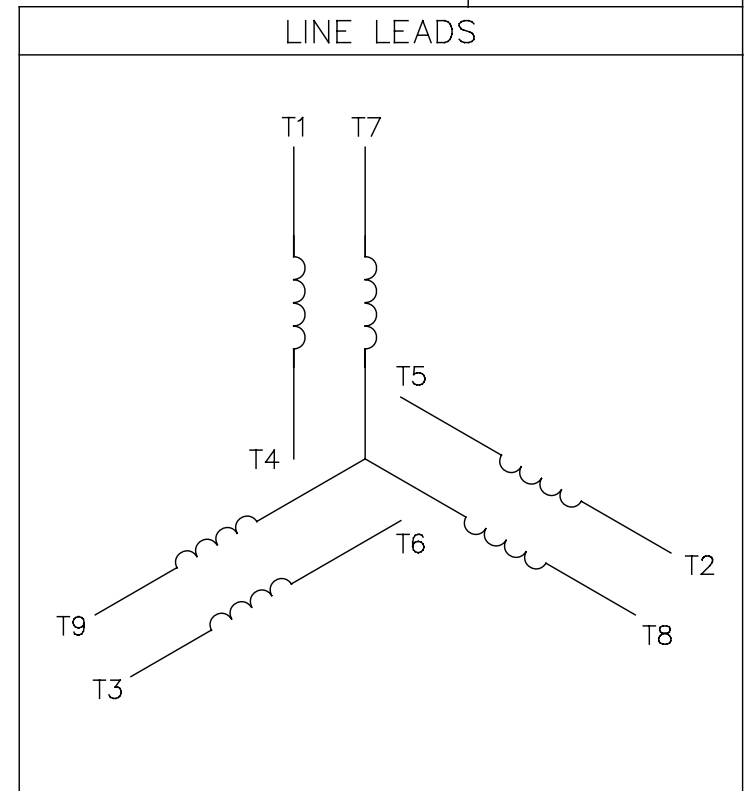


| | | | | |
|---|----------------------|--------------------|--|-------------------------|
| DRAWING REVISION E | REVISION BY SAJID | DATE 07/06/2015 | TOLERANCES UNLESS OTHERWISE SPECIFIED: | DRAWN BY PG 02/14/11 |
| ECO ECO-0080246 | APPROVED BY JD | DATE 07/06/2015 | DEC. INCH mm ANGLE X +0.1 [+2.5] ±7-30° .XX ±0.03 [+0.76] .XXX ±0.005 [+0.127] .XXXX ±0.0005 [+0.0127] | DATE |
| ECO DESCRIPTION ADDED DASH NO 750 & 800 | | | REMOVE BURRS & BREAK SHARP EDGES: .003/.015 [.076/.381] X 45° CORNER FILLETS: R.02 [.51] | APPROVED BY |
| <small>COPYRIGHT REGAL BELOIT AMERICA, INC. ALL RIGHTS RESERVED. PROPRIETARY AND CONFIDENTIAL INFORMATION - THIS DOCUMENT IS THE PROPERTY OF REGAL BELOIT AMERICA, INC. ("OWNER") AND CONTAINS OWNER'S PROPRIETARY INFORMATION. ANY PERSON, CORPORATION OR OTHER FIRM RECEIVING IT IS DEEMED, BY RECEIVING IT, TO AGREE THAT IT, AND/OR ANY PART OF IT, SHALL NOT BE DISCLOSED TO ANY PERSON, CORPORATION OR OTHER ENTITY, DUPLICATED, AND/OR USED, EXCEPT AS EXPRESSLY APPROVED IN WRITING IN ADVANCE BY OWNER. THIS DOCUMENT SHALL BE RETURNED TO OWNER UPON REQUEST. IT MAY BE SUBJECT TO CERTAIN RESTRICTIONS UNDER APPLICABLE EXPORT CONTROL LAWS AND REGULATIONS.</small> | | | MACHINED SURFACES: 200 5.1 INCH mm ✓ | DATE |
| | | | mm SHOWN IN [BRACKETS] | REFERENCE |
| | | | THIRD ANGLE PROJECTION | DESCRIPTION |

| | |
|-----------------------------------|----------------------------|
| Regal Beloit America, Inc. | |
| OUTLINE TEFC - "C" FACE | |
| MATERIAL WASHGUARD - JET PUMP | PROCESS/FINISH |
| SIZE B | DRAWING NUMBER 607-0015 |
| SHEET 1 OF 1 | |

005010-01

VIEW FROM OUTSIDE OF MOTOR AT SWITCH END.



| VOLTAGE | L1 | L2 | L3 | JOIN & INSULATE |
|---------|-------|-------|-------|-------------------------------|
| HIGH | T1 | T2 | T3 | (T4,T7) (T5,T8) (T6,T9) |
| LOW | T1,T7 | T2,T8 | T3,T9 | T4,T5,T6 |

| | | | | | | | | | | | |
|--|-----------------------|--|--------------|--------------------------------|--------------|-----------------------------------|---------|--------------------|------|-------------|-----------|
| | | | | TOLERANCES UNLESS SPECIFIED | | Regal Beloit America, Inc. | | DRAWN RDW 04/12/02 | | | |
| | | | | DEC. | INCHES | | | CHK | | | |
| | | | | .X | ±.1 | | | APPD | | | |
| | | | | .XX | ±.01 | | | SCALE 1=1 | | | |
| | | | | .XXX | ±.005 | TITLE | | REF FIG.2-51 | | | |
| A | UPDATED TO REGAL LOGO | | SAJ 06/26/15 | AJY | .XXXX ±.0005 | MAT'L | | FMF | | | |
| NO. | REVISION | | BY & DATE | CHK | ANG ±1/2" | FINISH | | PREV | | | |
| THIS DRAWING IN DESIGN AND DETAIL IS OUR PROPERTY AND MUST NOT BE USED EXCEPT IN CONNECTION WITH OUR WORK ALL RIGHTS OF DESIGN AND INVENTION ARE RESERVED THIS IS AN ELECTRONICALLY GENERATED DOCUMENT - DO NOT SCALE THIS PRINT | | | | RFP | 04/12/02 | CAD FILE | | 00501001 | SIZE | DRAWING NO. | REV. |
| | | | | | | DIST | BRF-NLV | | | A | 005010-01 |

