

PRODUCT INFORMATION PACKET



Model No: C6T14FC4C
Catalog No: 114891.00
1/2HP..37kW.1425RPM.56.IP54.220/380V.3PH.50HZ.CONT.NOT.40C.1.15SF.C FACE.50
HERTZ.C6T14FC4C
50 Hz



Regal and Leeson are trademarks of Regal Beloit Corporation or one of its affiliated companies.

©2018 Regal Beloit Corporation, All Rights Reserved. MC017097E





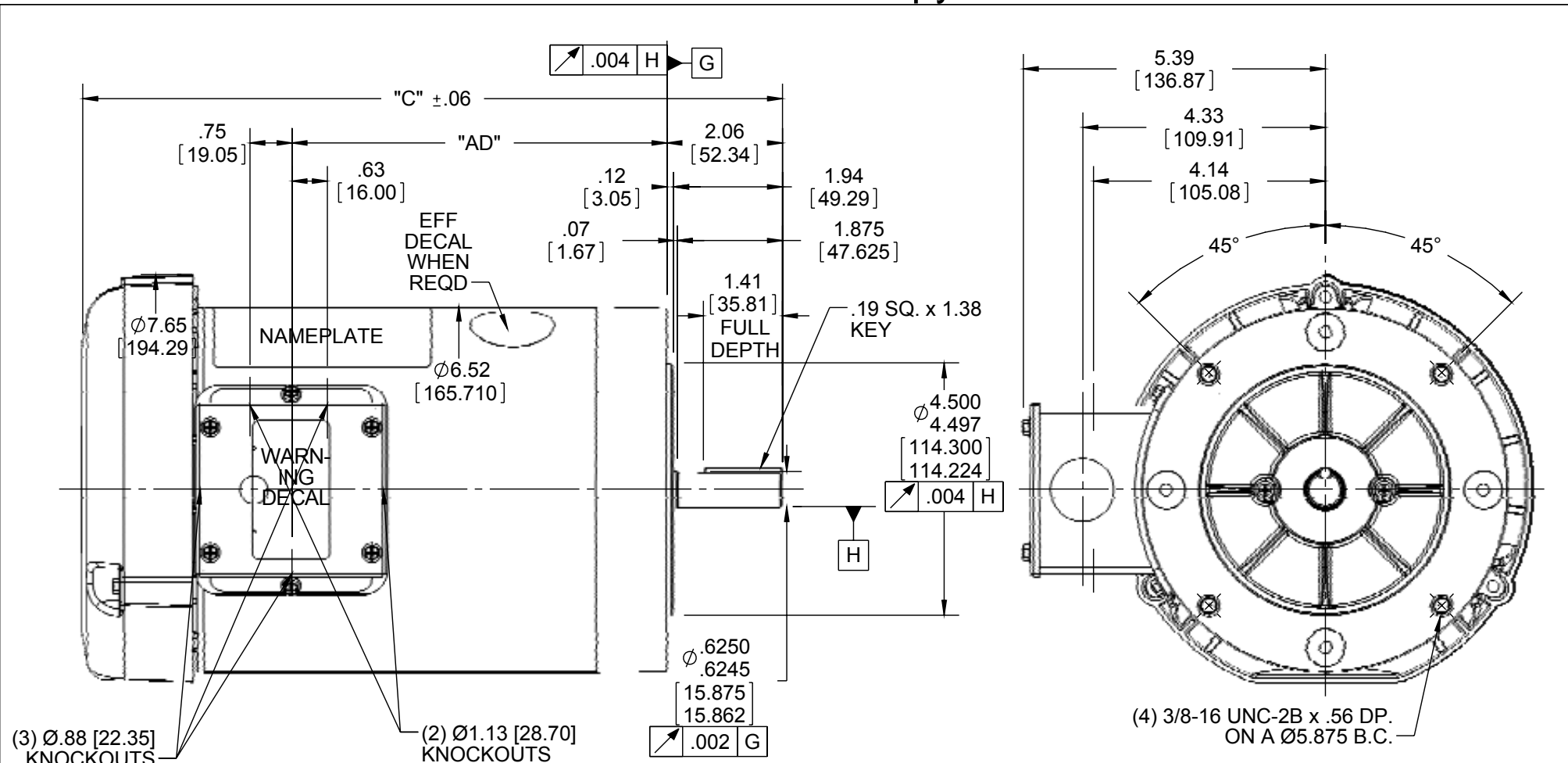
Nameplate Specifications

| | | | |
|----------------------------|------------------------------------|------------------------|-----------------------|
| Output HP | 0.50 Hp | Output KW | 0.37 kW |
| Frequency | 50 Hz | Voltage | 220/380/440 V |
| Current | 2.0/1.2/1.0 A | Speed | 1425 rpm |
| Service Factor | 1.15 | Phase | 3 |
| Efficiency | 73 % | Duty | Continuous |
| Insulation Class | B | Design Code | NO DESIGN CODE |
| KVA Code | J | Frame | 56C |
| Enclosure | Totally Enclosed Fan Cooled | Overload Protector | No |
| Ambient Temperature | 40 °C | Drive End Bearing Size | 6203 |
| Opp Drive End Bearing Size | 6203 | UL | Recognized |
| CSA | Y | CE | Y |
| IP Code | 54 | | |

Technical Specifications

| | | | |
|-----------------------|------------------------------------|-----------------------|------------------------|
| Electrical Type | Squirrel Cage Induction Run | Starting Method | Across The Line |
| Poles | 4 | Rotation | Reversible |
| Mounting | Round | Motor Orientation | HORIZONTAL |
| Drive End Bearing | BALL | Opp Drive End Bearing | BALL |
| Frame Material | Rolled Steel | Shaft Type | NEMA 56 |
| Overall Length | 10.48 in | Frame Length | 5.00 in |
| Shaft Diameter | 0.625 in | Shaft Extension | 1.88 in |
| Assembly/Box Mounting | F1 ONLY | | |
| Outline Drawing | 028776-500 | Connection Diagram | 005381.01 |

This is an uncontrolled document once printed or downloaded and is subject to change without notice. Date Created: 10/15/2018



NOTE:
1) GASKETS THROUGHOUT

| ORACLE REV |
|---------------|
| 004 |

| DASH NO. | "C" | "AD" |
|----------|-------|------|
| 450 | 9.98 | 4.19 |
| 500 | 10.48 | 4.69 |
| 550 | 10.98 | 5.19 |
| 600 | 11.48 | 5.69 |
| 625 | 11.73 | 5.94 |

| DASH NO. | "C" | "AD" |
|----------|-------|------|
| 650 | 11.98 | 6.19 |
| 675 | 12.23 | 6.44 |
| 700 | 12.48 | 6.69 |
| 750 | 12.98 | 7.19 |
| 800 | 13.48 | 7.69 |

DRAWING REVISION E
ECO ECO-0092098
ECO DESCRIPTION
ADDED #450 (114176)
COPYRIGHT REGAL BELOIT AMERICA, INC. ALL RIGHTS RESERVED. PROPRIETARY AND CONFIDENTIAL INFORMATION - THIS DOCUMENT IS THE PROPERTY OF REGAL BELOIT AMERICA, INC. ("OWNER") AND CONTAINS OWNER'S PROPRIETARY INFORMATION. ANY PERSON, CORPORATION OR OTHER FIRM RECEIVING IT IS DEEMED, BY RECEIVING IT, TO AGREE THAT IT, AND/OR ANY PART OF IT, SHALL NOT BE DISCLOSED TO ANY PERSON, CORPORATION OR OTHER ENTITY, DUPLICATED, AND/OR USED, EXCEPT AS EXPRESSLY APPROVED IN WRITING IN ADVANCE BY OWNER. THIS DOCUMENT SHALL BE RETURNED TO OWNER UPON REQUEST. IT MAY BE SUBJECT TO CERTAIN RESTRICTIONS UNDER APPLICABLE EXPORT CONTROL LAWS AND REGULATIONS.

TOLERANCES UNLESS OTHERWISE SPECIFIED:
DEC. INCH mm ANGLE
.X ±0.1 [±2.5] ±0.5°
.XX ±0.01 [±0.25]
.XXX ±0.005 [±0.127]
.XXXX ±0.0005 [±0.0127]
REMOVE BURRS & BREAK SHARP EDGES: .003/.015 [.076/.381] X 45°
CORNER FILLETS: R.02 [.51]
MACHINED SURFACES: 125/3.2 INCH/mm
mm SHOWN IN [BRACKETS]

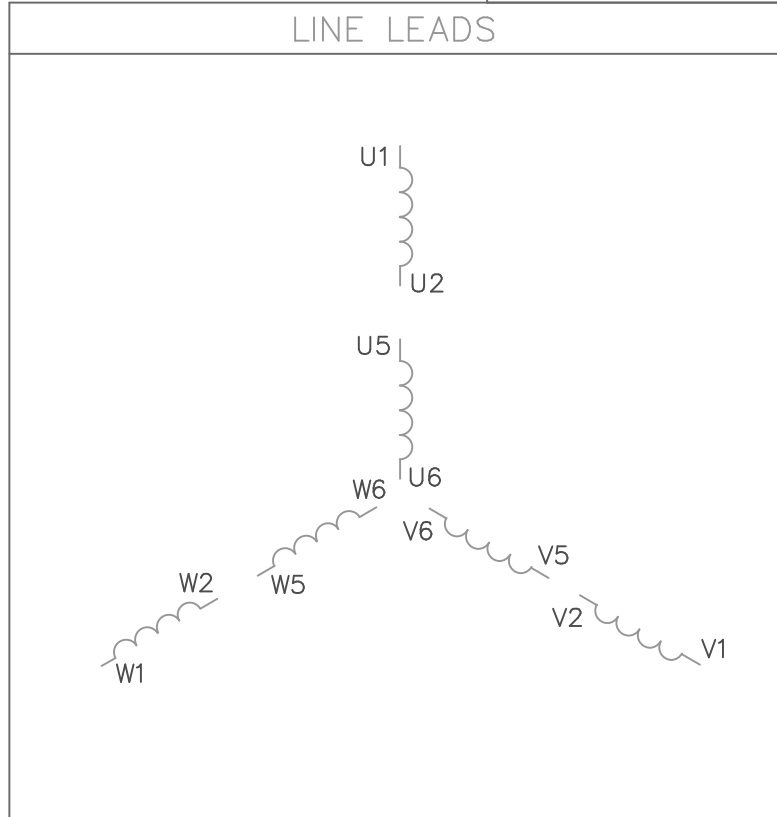
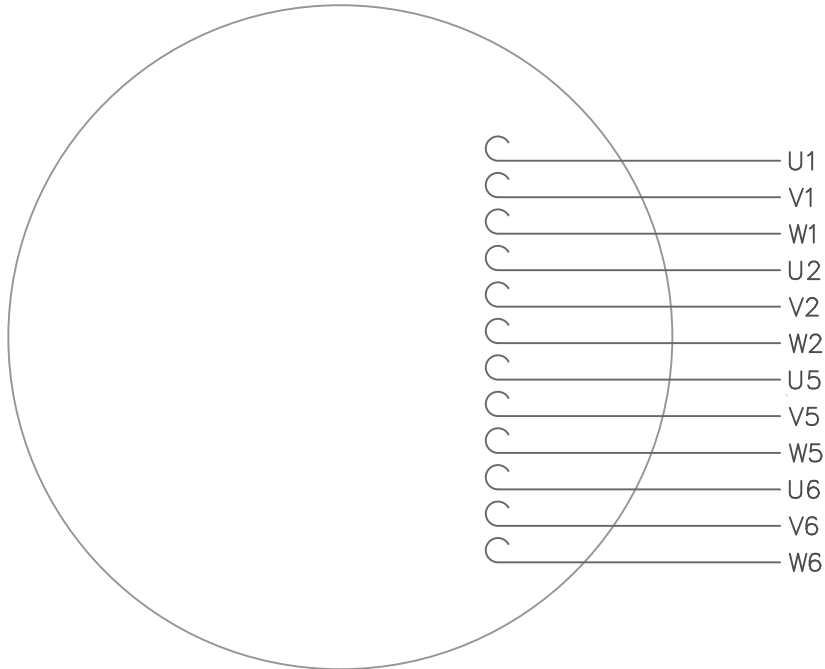
DRAWN BY KMM
DATE 08/01/07
APPROVED BY
DATE
REFERENCE
THIRD ANGLE PROJECTION

REGAL™ Regal Beloit America, Inc.

OUTLINE
56C FRAME TEFC - "C" FACE

| | | | |
|---------------|------------------------------|--------------------------------|--------------|
| SIZE A | DRAWING NUMBER 028776 | PROCESS/FINISH GENERAL PURPOSE | SHEET 1 OF 1 |
|---------------|------------------------------|--------------------------------|--------------|

VIEW FROM OUTSIDE OF MOTOR AT SWITCH END.



| VOLTAGE | L1 | L2 | L3 | JOIN |
|----------------|----------------|----------------|----------------|-------------------------------|
| (2Δ) LOW | U1,W2 U5,W6 | V1,U2 V5,U6 | W1,V2 W5,V6 | ----- |
| (2Y) MEDIUM | U1,U5 | V1,V5 | W1,W5 | (U2,V2,W2) (U6,V6,W6) |
| (1Δ) HIGH | U1,W6 | V1,U6 | W1,V6 | (U2,U5) (V2,V5) (W2,W5) |

| | | | | TOLERANCES UNLESS OTHERWISE SPECIFIED | |
|-----|------------------------------|-----|----------|---------------------------------------|---------|
| | | | | DECIMALS | |
| | | | | .00 | ± .01 |
| | | | | .000 | ± .005 |
| 1 | REDRAWN TO CURRENT STANDARDS | DBT | 05/30/97 | .0000 | ± .0005 |
| NO. | REVISION | BY | DATE | FRACTIONS | ± 1/64 |
| | | | | ANGLES | ± 1/2° |
| | | | | INCH/MM | |

LEESON ELECTRIC CORPORATION

EXT. WIRING DIAGRAM
TYPE "T" W/O PROTECTOR

DRAWN GWS 2/23/96
CH'K'D.
APPR.
SCALE 1=1
REF. 005352 PG 3
FMF

TITLE
MAT'L. DECAL - 080590
FINISH STOCK
SIZE A
DRAWING NO. 005381-01

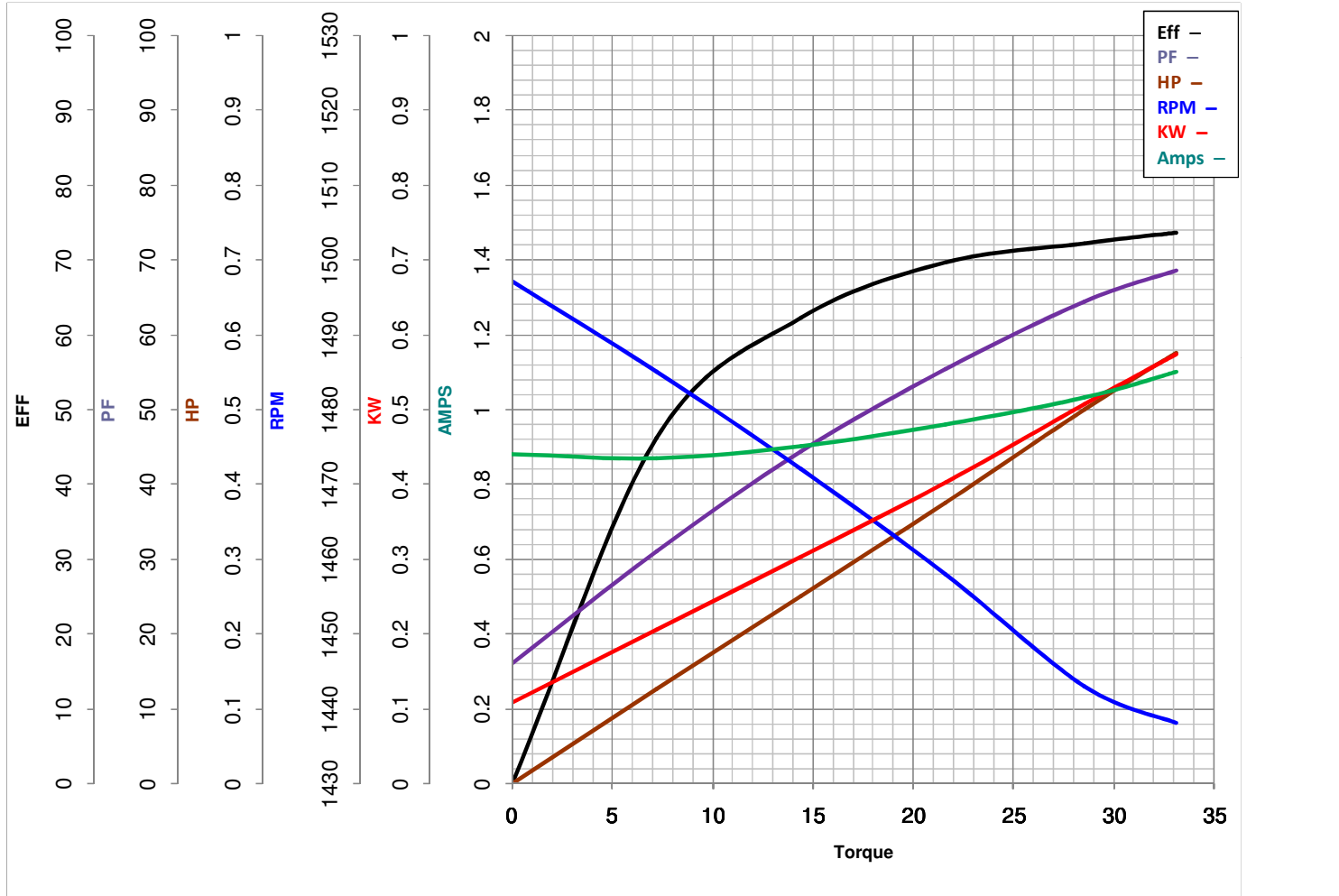


LEESON ELECTRIC CORPORATION
TYPICAL PERFORMANCE CURVE for AC MOTOR

Model No 114891.00

Catalog No 114891.00

Curve at 440 Volts HP 0.50 PHASE 3
50 HZ
0.5 HP VOLTS 220/380/440
HZ 50 RPM 1425



| | | | |
|------------------|--------------------|------------------|-------------------|
| FL TORQUE | <u>28.53</u> Oz.Ft | FL AMPS | <u>2/1.15/1</u> |
| BD TORQUE | <u>96.8</u> Oz.Ft | PU TORQUE | <u>69.5</u> Oz.Ft |
| LR TORQUE | <u>71.1</u> Oz.Ft | LR AMPS | <u>4.8</u> |
| WINDING | T634184-5 | Date | 6/4/2018 |