

PRODUCT INFORMATION PACKET



Model No: C6T14FC5C

Catalog No: 114889.00

1/3HP.0.25kW.1425RPM.56.IP54.220/380V.3PH.50HZ.CONT.NOT.40C.1.15SF.C FACE.50
HERTZ.C6T14FC5C
50 Hz



Regal and Leeson are trademarks of Regal Beloit Corporation or one of its affiliated companies.

©2018 Regal Beloit Corporation, All Rights Reserved. MC017097E





Nameplate Specifications

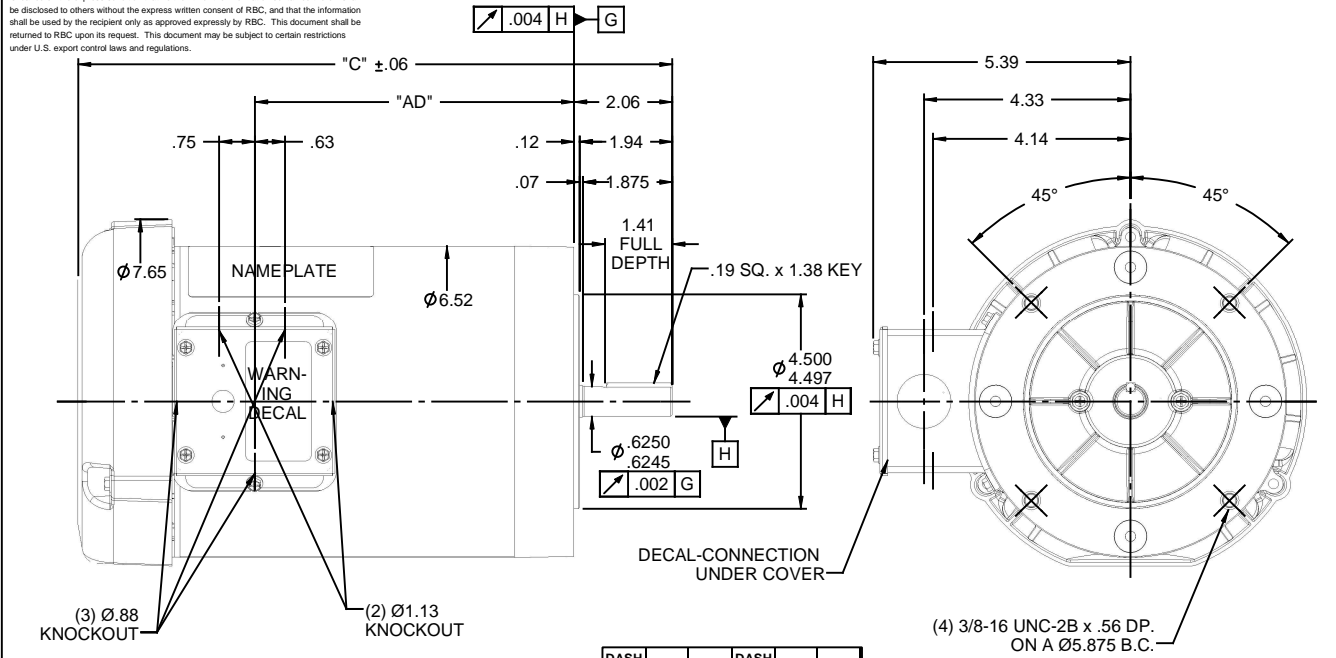
Output HP	0.33 Hp	Output KW	0.25 kW
Frequency	50 Hz	Voltage	220/380/440 V
Current	1.7/1.0/0.85 A	Speed	1425 rpm
Service Factor	1.15	Phase	3
Efficiency	68 %	Duty	Continuous
Insulation Class	B	Design Code	NO DESIGN CODE
KVA Code	K	Frame	56C
Enclosure	Totally Enclosed Fan Cooled	Overload Protector	No
Ambient Temperature	40 °C	Drive End Bearing Size	6203
Opp Drive End Bearing Size	6203	UL	Recognized
CSA	Y	CE	Y
IP Code	43		

Technical Specifications

Electrical Type	Squirrel Cage Induction Run	Starting Method	Across The Line
Poles	4	Rotation	Reversible
Mounting	Round	Motor Orientation	HORIZONTAL
Drive End Bearing	BALL	Opp Drive End Bearing	BALL
Frame Material	Rolled Steel	Shaft Type	NEMA 56
Overall Length	10.21 in	Frame Length	4.75 in
Shaft Diameter	0.625 in	Shaft Extension	1.88 in
Assembly/Box Mounting	F1 ONLY		
Outline Drawing	028883-475	Connection Diagram	005381.01

This is an uncontrolled document once printed or downloaded and is subject to change without notice. Date Created: 10/15/2018

RBC PROPRIETARY AND CONFIDENTIAL INFORMATION
 This document is the property of REGAL BELLOIT CORPORATION ("RBC") including its subsidiaries and divisions and contains proprietary information of RBC. This document is loaned on the express condition that neither it nor the information contained therein shall be disclosed to others without the express written consent of RBC, and that the information shall be used by the recipient only as approved expressly by RBC. This document shall be returned to RBC upon its request. This document may be subject to certain restrictions under U.S. export control laws and regulations.

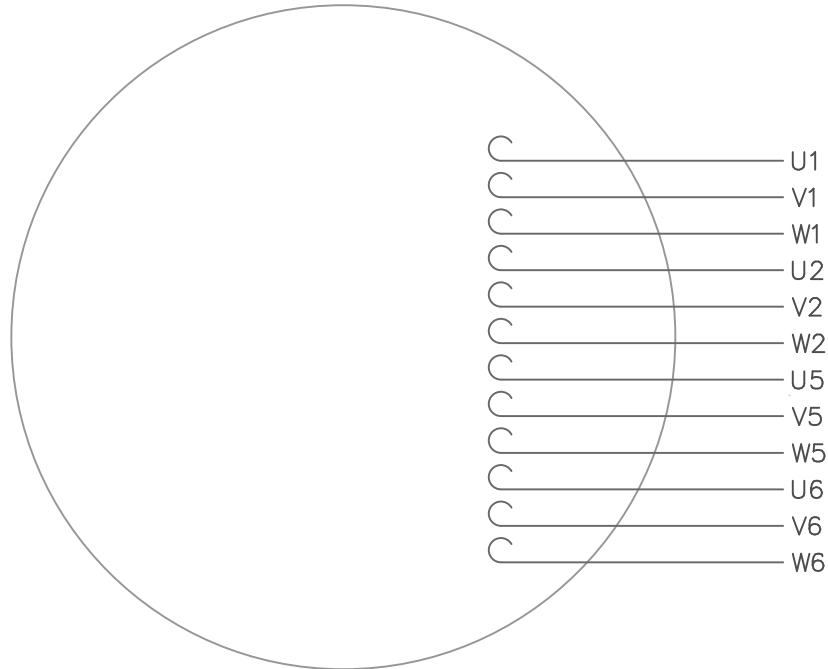


DASH NO.	"C"	"AD"	DASH NO.	"C"	"AD"
475	10.21	4.44	625	11.71	5.94
500	10.46	4.69	650	11.96	6.19
550	10.96	5.19	700	12.46	6.69
575	11.21	5.44	750	12.96	7.19
600	11.46	5.69	800	13.46	7.69

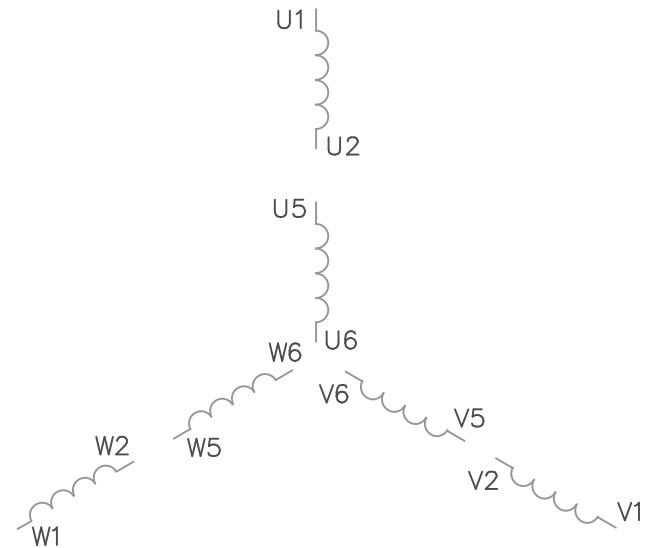
NOTE:
 1) GASKETS THROUGHOUT

NO		REVISION	BY & DATE	CHK	ANG	FINISH	ELECTRIC MOTORS GEARMOTORS AND DRIVES		DRAWN	GRB 09/24/08	
				TOLERANCES UNLESS SPECIFIED		LEESON		CHK	RVD 09/24/08		
				DEC INCHES		TITLE		SCALE 3:8			
				.X ±.1		OUTLINE - 56C FRAME		REF 033098			
				.XX ±.03		TEFC - "C" FACE		FMF 114889.00			
				.XXX ±.005		MATL		PAGE OF			
				.XXXX ±.0005		FINISH GENERAL PURPOSE					
		THIRD ANGLE PROJECTION		RFP 09/24/08		PREV		SIZE		DRAWING NO	
				NETWORK FILE NAME 028883				A		028883	

VIEW FROM OUTSIDE OF MOTOR AT SWITCH END.



LINE LEADS



VOLTAGE	L1	L2	L3	JOIN
(2Δ) LOW	U1,W2 U5,W6	V1,U2 V5,U6	W1,V2 W5,V6	-----
(2Y) MEDIUM	U1,U5	V1,V5	W1,W5	(U2,V2,W2) (U6,V6,W6)
(1Δ) HIGH	U1,W6	V1,U6	W1,V6	(U2,U5) (V2,V5) (W2,W5)

TOLERANCES UNLESS OTHERWISE SPECIFIED

DECIMALS

.00 ± .01

.000 ± .005

.0000 ± .0005

FRACTIONS ± 1/64

ANGLES ± 1/2°

INCH/MM

LEESON ELECTRIC CORPORATION

DRAWN GWS 2/23/96

CH'K'D.

APPR.

SCALE 1=1

REF. 005352 PG 3

FMF

TITLE

MAT'L.

FINISH

EXT. WIRING DIAGRAM

TYPE "T" W/O PROTECTOR

DECAL - 080590

SIZE

A

DRAWING NO.

005381-01

STOCK

1 REDRAWN TO CURRENT STANDARDS

NO. REVISION

DBT

BY

05/30/97

DATE

THIS DRAWING IN DESIGN AND DETAIL IS OUR PROPERTY AND MUST NOT BE USED EXCEPT IN CONNECTION WITH OUR WORK ALL RIGHTS OF DESIGN AND INVENTION ARE RESERVED



1051 CHEYENNE AVE.
GRAFTON, WI 53024
PH. 262-377-8810

CERTIFICATION DATA SHEET

CATALOG #: 114889.00

CONN. DIAGRAM: 005381.01

OUTLINE: 028883-475

MOUNTING: F1 ONLY

WINDING #: T634215 FR 4 A

TYPICAL MOTOR PERFORMANCE DATA

HP	KW	SYNC. RPM	F.L. RPM	FRAME	ENCLOSURE	KVA CODE	DESIGN	
1/3	0.25	1500	1425	56C	TEFC	K	NO DESIGN CODE	
PH	Hz	VOLTS	AMPS	START TYPE	DUTY	INSL	S.F.	AMB°C
3	50	220/380/440	1.7/1.85	ACROSS THE LINE	CONTINUOUS	B4	1.15	40

FULL LOAD EFF:	68	3/4 LOAD EFF:	62.4	1/2 LOAD EFF:	54.4	GTD. EFF	ELEC. TYPE		
FULL LOAD PF:	56	3/4 LOAD PF:	47.3	1/2 LOAD PF:	37.6	0	SQ CAGE IND RUN		
F.L. TORQUE	LOCKED ROTOR AMPS	L.R. TORQUE	B.D. TORQUE	F.L. RISE°C					
19.2	02-FT	7.4 / 4.3 / 3.7	57.3	02-FT	0 %	74.9	02-FT	0 %	0

SOUND PRESSURE @ 3 FT.	SOUND POWER	ROTOR WK^2	MAX. WK^2	SAFE STALL TIME	STARTS / HOUR	APPROX. MOTOR WGT
- DBA	- DBA	0.045 LB-FT^2	- LB-FT^2	10 SEC.	-	- LBS.

*** SUPPLEMENTAL INFORMATION ***

DE BRACKET TYPE	ODE BRACKET TYPE	MOUNT TYPE	ORIENTATION	SEVERE DUTY	HAZARDOUS LOCATION	DRIP COVER	SCREENS	PAINT
C-FACE	STANDARD	ROUND	HORIZONTAL	FALSE	NONE	FALSE	NONE	BLUE - LEESON (ENAMEL)
BEARINGS DE ODE	GREASE	SHAFT TYPE	SPECIAL DE	SPECIAL ODE	SHAFT MATERIAL	FRAME MATERIAL		
BALL BALL	POLYREX EM	STANDARD 56	NONE	NONE	1144 STRESSPROOF (C-223)	ROLLED STEEL		

THERMO-PROTECTORS				THERMISTORS				CONTROL		SPACE HEATERS	
THERMOSTATS	PROTECTORS	WDG RTDS	BRG RTDS	NONE	FALSE	NONE	NONE	NONE	NONE	VOLTS	
NONE	NOT	NONE	NONE								

* N

INVERTER TORQUE: NONE
INV. HP SPEED RANGE: NONE

ENCODER:	NONE	NONE	PPR
BRAKE:	NONE	NONE	NONE
	P/N	NONE	NONE
	FT-LB	NONE	V
		NONE	Hz

O
T
E
S

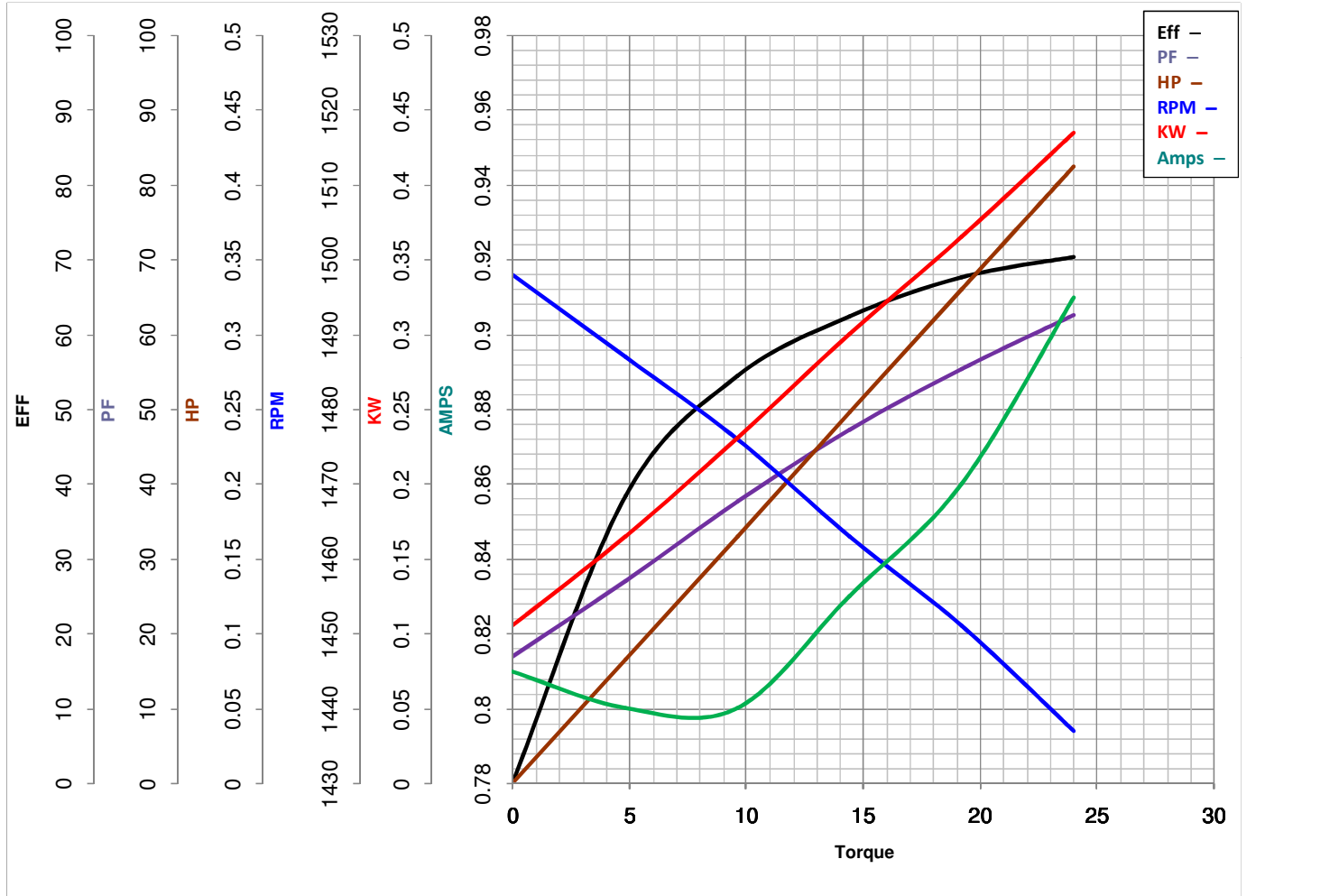


LEESON ELECTRIC CORPORATION
TYPICAL PERFORMANCE CURVE for AC MOTOR

Model No 114889.00

Catalog No 114889.00

Curve at 440 Volts HP 0.33 PHASE 3
50 HZ
0.33 HP VOLTS 220/380/440
HZ 50 RPM 1425



FL TORQUE	<u>19.2</u>	Oz.Ft	FL AMPS	<u>1.7/1.85</u>	
BD TORQUE	<u>74.9</u>	Oz.Ft	PU TORQUE	<u>56.8</u>	Oz.Ft
LR TORQUE	<u>57.3</u>	Oz.Ft	LR AMPS	<u>3.68</u>	
WINDING	T634215-4		Date	5/25/2018	