

PRODUCT INFORMATION PACKET



Model No: C6T34FC37D
Catalog No: 114208.00
3/4HP..3450RPM.56.TEFC.208-230/460V.3PH.60HZ.CONT.NOT.40C.1.15SF.ROUND.JET
PUMP.C6T34FC37D
Jet Pump



Regal and Leeson are trademarks of Regal Beloit Corporation or one of its affiliated companies.
©2018 Regal Beloit Corporation, All Rights Reserved. MC017097E





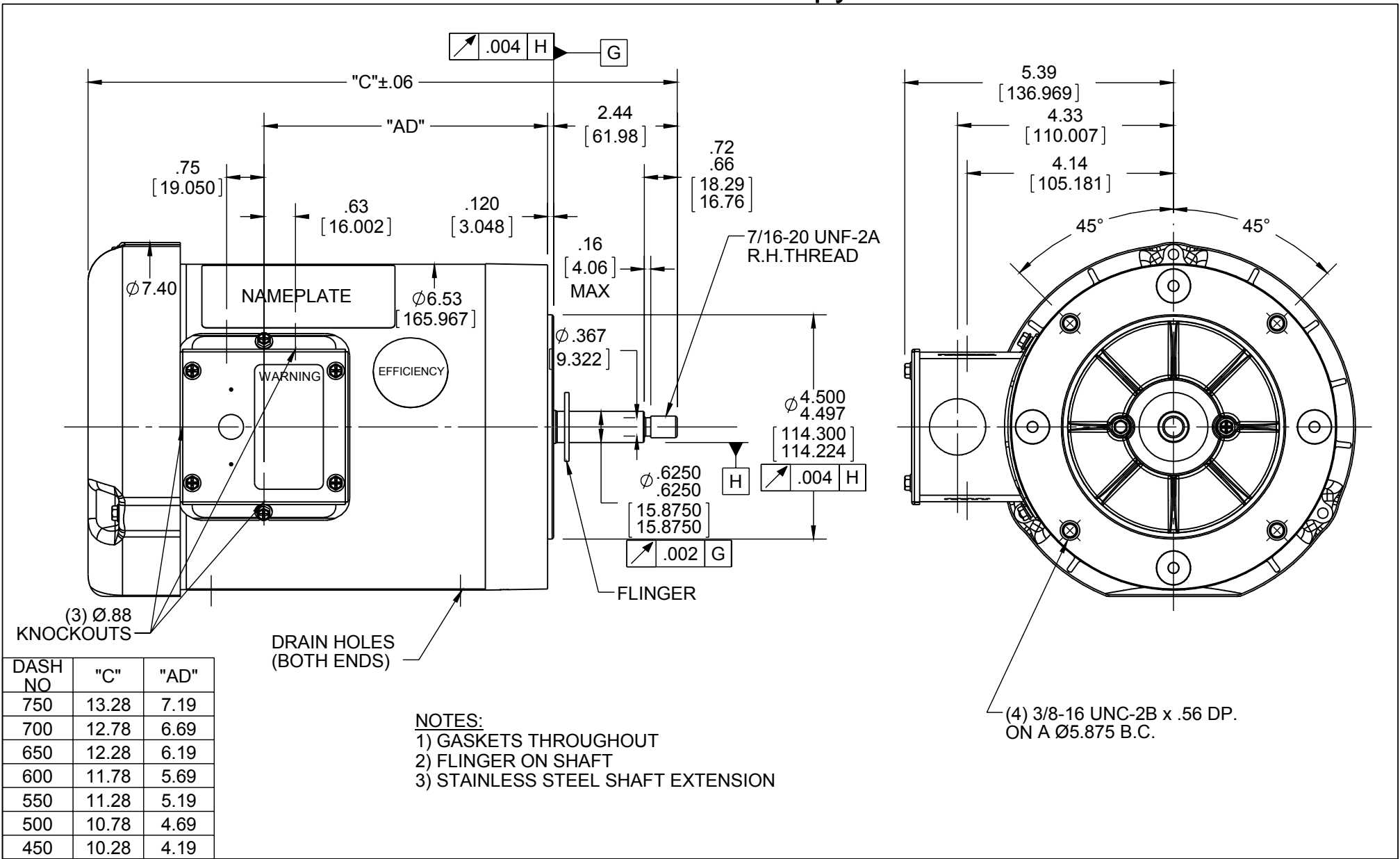
Nameplate Specifications

Output HP	0.75 Hp	Output KW	0.56 kW
Frequency	60 Hz	Voltage	208-230/460 V
Current	2.5-2.4/1.2 A	Speed	3450 rpm
Service Factor	1.15	Phase	3
Efficiency	75.5 %	Duty	Continuous
Insulation Class	B	Design Code	B
KVA Code	J	Frame	56J
Enclosure	Totally Enclosed Fan Cooled	Overload Protector	No
Ambient Temperature	40 °C	Drive End Bearing Size	6203
Opp Drive End Bearing Size	6203	UL	Recognized
CSA	Y	CE	N
IP Code	43		

Technical Specifications

Electrical Type	Squirrel Cage Induction Run	Starting Method	Across The Line
Poles	2	Rotation	Reversible
Mounting	Round	Motor Orientation	HORIZONTAL
Drive End Bearing	BALL	Opp Drive End Bearing	BALL
Frame Material	Rolled Steel	Shaft Type	J
Overall Length	10.78 in	Frame Length	5.00 in
Shaft Diameter	0.625 in	Shaft Extension	2.44 in
Assembly/Box Mounting	F1 ONLY		
Outline Drawing	028841-500	Connection Diagram	005010.01

This is an uncontrolled document once printed or downloaded and is subject to change without notice. Date Created: 10/15/2018



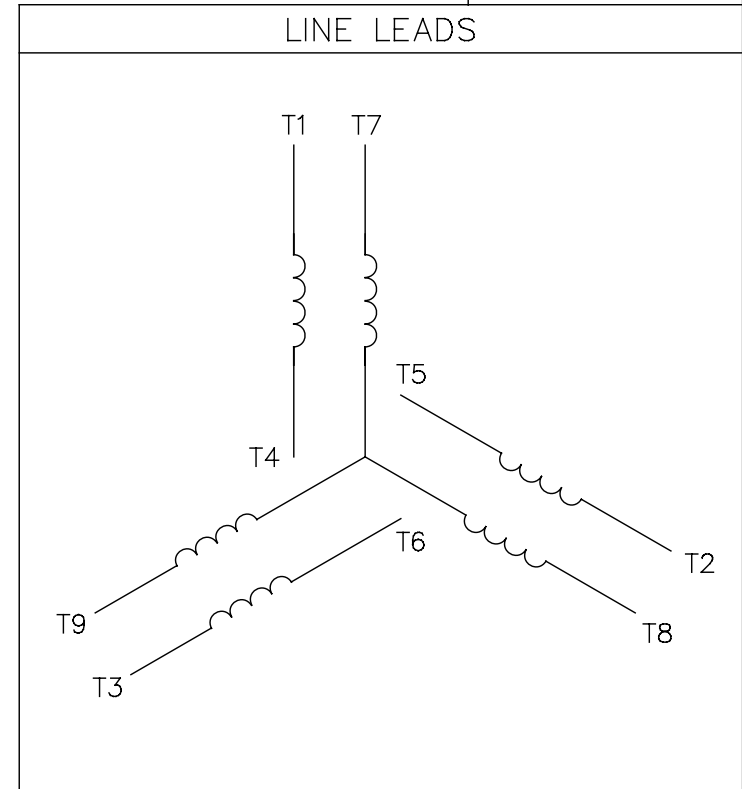
DASH NO	"C"	"AD"
750	13.28	7.19
700	12.78	6.69
650	12.28	6.19
600	11.78	5.69
550	11.28	5.19
500	10.78	4.69
450	10.28	4.19

- NOTES:**
- 1) GASKETS THROUGHOUT
 - 2) FLINGER ON SHAFT
 - 3) STAINLESS STEEL SHAFT EXTENSION

DRAWING REVISION D		REVISION BY CHRIS FISHER	DATE 8/18/2015	TOLERANCES UNLESS OTHERWISE SPECIFIED:		DRAWN BY GRB		Regal Beloit America, Inc.			
ECO ECO-0079536		APPROVED BY	DATE	DEC.	INCH	mm	ANGLE			DATE 7/02/2008	
ECO DESCRIPTION ADDED ITEM #750				.X	± 0.1	[± 2.5]	$\pm 0.5^\circ$	APPROVED BY	DESCRIPTION <h2 style="text-align: center;">OUTLINE</h2> T.E.F.C. - "C" FACE		
COPYRIGHT REGAL BELOIT AMERICA, INC. ALL RIGHTS RESERVED. PROPRIETARY AND CONFIDENTIAL INFORMATION - THIS DOCUMENT IS THE PROPERTY OF REGAL BELOIT AMERICA, INC. ("OWNER") AND CONTAINS OWNER'S PROPRIETARY INFORMATION. ANY PERSON, CORPORATION OR OTHER FIRM RECEIVING IT IS DEEMED, BY RECEIVING IT, TO AGREE THAT IT, AND/OR ANY PART OF IT, SHALL NOT BE DISCLOSED TO ANY PERSON, CORPORATION OR OTHER ENTITY, DUPLICATED, AND/OR USED, EXCEPT AS EXPRESSLY APPROVED IN WRITING IN ADVANCE BY OWNER. THIS DOCUMENT SHALL BE RETURNED TO OWNER UPON REQUEST. IT MAY BE SUBJECT TO CERTAIN RESTRICTIONS UNDER APPLICABLE EXPORT CONTROL LAWS AND REGULATIONS.				.XX	± 0.01	[± 0.25]		DATE			
				.XXX	± 0.005	[± 0.127]		REFERENCE		MATERIAL JET PUMP	PROCESS/FINISH
				.XXXX	± 0.0005	[± 0.0127]		THIRD ANGLE PROJECTION	SIZE A	DRAWING NUMBER 028841	SHEET 1 OF 1

005010-01

VIEW FROM OUTSIDE OF MOTOR AT SWITCH END.



VOLTAGE	L1	L2	L3	JOIN & INSULATE
HIGH	T1	T2	T3	(T4,T7) (T5,T8) (T6,T9)
LOW	T1,T7	T2,T8	T3,T9	T4,T5,T6

		TOLERANCES UNLESS SPECIFIED		REGAL™ Regal Beloit America, Inc.		DRAWN RDW 04/12/02	
		DEC.	INCHES	TITLE EXTERNAL WIRING DIAGRAM 3 PHASE W/O PROTECTOR		CHK	
		.X	±.1			APPD	
		.XX	±.01			SCALE 1=1	
		.XXX	±.005			REF FIG.2-51	
A	UPDATED TO REGAL LOGO	SAJ	06/26/15	AJY	.XXXX ±.0005	MAT'L. DECAL - 004014	
NO.	REVISION	BY & DATE	CHK	ANG	±1/2"	FINISH	PREV
THIS DRAWING IN DESIGN AND DETAIL IS OUR PROPERTY AND MUST NOT BE USED EXCEPT IN CONNECTION WITH OUR WORK ALL RIGHTS OF DESIGN AND INVENTION ARE RESERVED THIS IS AN ELECTRONICALLY GENERATED DOCUMENT - DO NOT SCALE THIS PRINT				RFP	04/12/02	CAD FILE	00501001
				DIST	BRF-NLV	SIZE	DRAWING NO.
						A	005010-01
							REV. A



P.O. BOX 8003
WAUSAU, WI 54401-8003
PH. 715-675-3311

DATA VOLTS: 460

CERTIFICATION DATA SHEET

CONN. DIAGRAM: 005010.01
OUTLINE: 028841-500
WINDING: T632160

CAT #: 114208.00

FR 3

TYPICAL MOTOR PERFORMANCE DATA

HP	KW	SYNC RPM	FL RPM	FRAME	ENCLOSURE	TYPE	KVA CODE	DESIGN											
0.75	0.56	3600	3454	56J	TEFC	TFR	J	B											
PH	HZ	VOLTS	AMPS	START TYPE	DUTY	INSL	S.F.	AMB	ELEV.										
3	60/50	208-230/460#190/380	2.5-2.4/1.2&2.1/1.05	ACROSS THE LINE	CONT	B	1.15	40	3300										
F.L. EFF	F.L. PF	75.6	78.4	3/4 LD EFF	3/4 LD PF	73.5	70.6	1/2 LD EFF	1/2 LD PF	68.3	58.9	0.0	ELECT. TYPE	SO CAGE IND RUN					
F.L. TORQUE	LR AMPS @ 460 V	294	LB-FT	7.3	L.R. TORQUE	738	LB-FT	251%	B.D. TORQUE	1,043	LB-FT	355%	F.L. RISE (°C)	57					
PRESSURE @3	0	DBA	9	DBA	ROTOR WK²	0.02	LB-FT²	0	MAX LOAD WK²	0	LB-FT²	SAFE STALL TIME	10	SEC.	STARTS/HOUR	0	MOTOR WGT	0	LB.

*** SUPPLEMENTAL INFORMATION ***

DE BRACKET TYPE	ODE BRACKET TYPE	MOUNT TYPE	MOTOR ORIENTATION	SEVERE DUTY	HAZARDOUS LOCATION	DRIIP COVER	SCREENS	PAINT
C-FACE	STANDARD	ROUND	HORIZONTAL	NO	NONE	NO	NONE	JE-LEESON/ENAM
BEARINGS DE	ODE	GREASE	SHAFT TYPE	SPECIAL DE	SPECIAL ODE	SHAFT MATERIAL	FRAME MATERIAL	
BALL 6203	BALL 6203	POLYREX EM	JET PUMP	NONE	NONE	303 STAINLESS (C-501)	ROLLED STEEL	
THERMOSTATS	PROTECTORS	WIDG RTD's	BRG RTD's	THERMISTORS	CONTROL	SPACE HEATERS		
NONE	NOT	NONE	NONE	NONE	FALSE	NA		
R1 (ohms/ph)	R2 (ohms/ph)	X1 (ohms/ph)	X2 (ohms/ph)	Xm (ohms/ph)	VIBRATION (in/sec)	FLOAT ODE		
0	0	0	0	0	0.080			

* NOT TESTED		INVERTER TORQUE: NONE	
		INV. HP SPEED RANGE: NONE	
		ENCODER: NONE	
		NONE	
		BRAKE: NONE	
		NONE	
		FT-LB: NA	
		NONE	
		VOLTAGE: NONE	
		NONE	
		UL: Y-(LEESON UL REC)	
		NONE	
		PPR	

DATE:	1/30/2018	HZ:	
-------	-----------	-----	--

