

# PRODUCT INFORMATION PACKET



Model No: C6T34DK5B

Catalog No: 114203.00

..1 1/2HP..3450RPM.56.DP.230/460V.3PH.60HZ.CONT.40C.1.15SF.RIGID C.C6T34DK5B.....JET  
PUMP.NOT.....

Jet Pump



Regal and Leeson are trademarks of Regal Beloit Corporation or one of its affiliated companies.

©2018 Regal Beloit Corporation, All Rights Reserved. MC017097E





### Nameplate Specifications

Output HP	1.50 Hp	Output KW	1.1 kW
Frequency	60 Hz	Voltage	208-230/460 V
Current	4.4-4.2/2.1 A	Speed	3450 rpm
Service Factor	1.15	Phase	3
Efficiency	81.5 %	Duty	Continuous
Insulation Class	B	Design Code	B
KVA Code	K	Frame	56J
Enclosure	Drip Proof	Overload Protector	No
Ambient Temperature	40 °C	Drive End Bearing Size	6203
Opp Drive End Bearing Size	6203	UL	Recognized
CSA	Y	CE	N
IP Code	22		

### Technical Specifications

Electrical Type	Squirrel Cage Induction Run	Starting Method	Across The Line
Poles	2	Rotation	Reversible
Mounting	Rigid base	Motor Orientation	HORIZONTAL
Drive End Bearing	BALL	Opp Drive End Bearing	BALL
Frame Material	Rolled Steel	Shaft Type	J
Overall Length	11.34 in	Frame Length	6.00 in
Shaft Diameter	0.625 in	Shaft Extension	2.44 in
Assembly/Box Mounting	F1 ONLY		
Outline Drawing	028541-600	Connection Diagram	005010.01

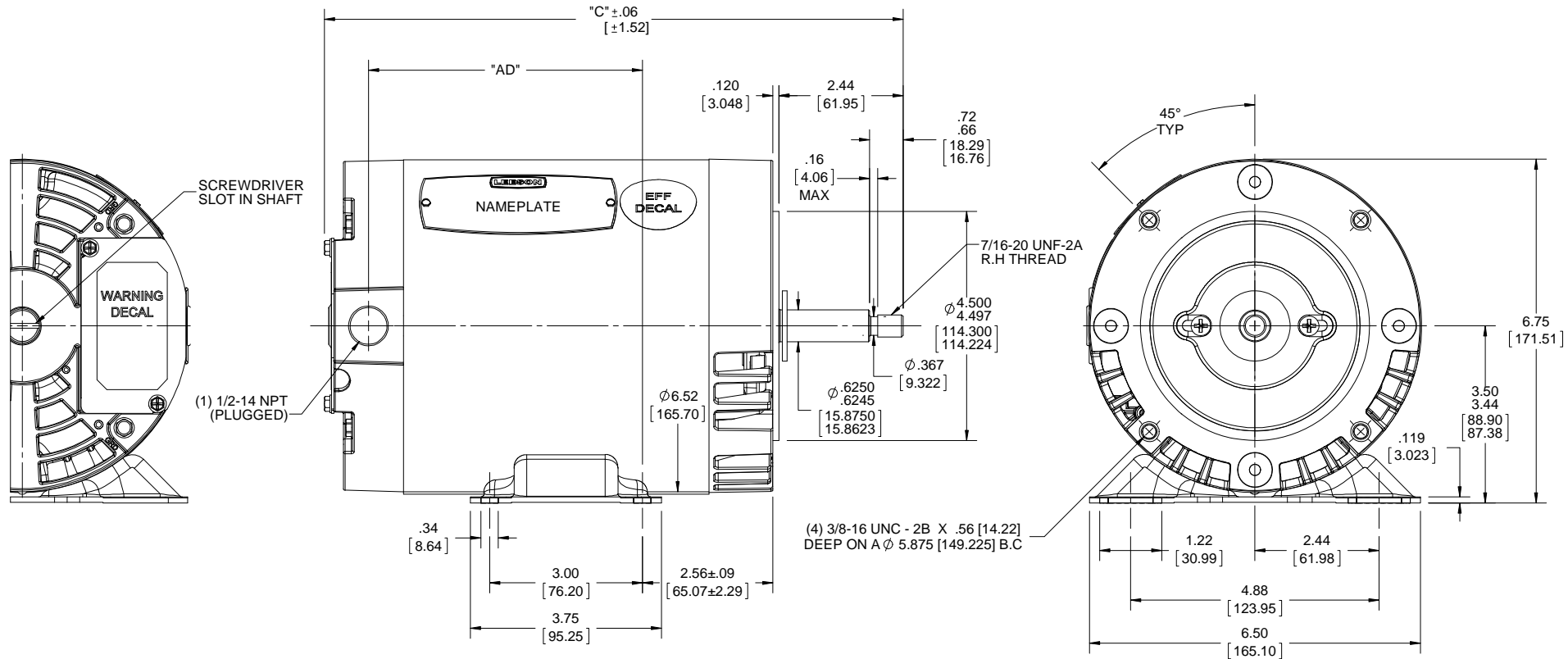
This is an uncontrolled document once printed or downloaded and is subject to change without notice. Date Created: 10/15/2018

B

B

A

A



NOTE:

- 1) FLINGER ON SHAFT
- 2) STAINLESS FACE SHAFT EXTENSION.
- 3) MAXIMUM FACE RUNOUT TO BE .004 [102] T.I.R.
- 4) MAXIMUM PILOT ECCENTRICITY .004 [102] T.I.R.
- 5) ECCENTRICITY OF THREADED PORTION TO BE .004 [102] T.I.R.

DASH NO.	"C"	"AD"
550	10.87 [276.10]	4.88 [123.95]
600	11.37 [288.80]	5.38 [136.65]
650	11.87 [301.50]	5.88 [149.35]
700	12.37 [314.20]	6.38 [162.05]

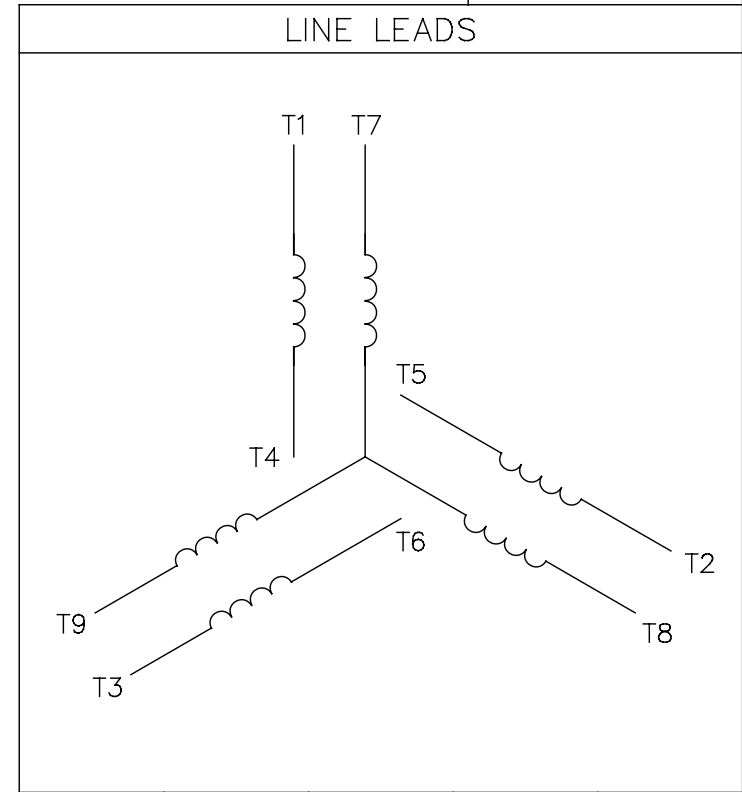
DRAWING REVISION C	REVISION BY A.SUPPANAVAR	DATE 12/21/2017
ECO ECO-0143018	APPROVED BY PK	DATE 04/10/2018
ECO DESCRIPTION OUTLINE CONVERSION PROJECT		
<small>COPYRIGHT REGAL BELOIT AMERICA, INC. ALL RIGHTS RESERVED.          PROPRIETARY AND CONFIDENTIAL INFORMATION - THIS DOCUMENT IS THE PROPERTY OF          REGAL BELOIT AMERICA, INC. (OWNER) AND CONTAINS OWNER'S PROPRIETARY          INFORMATION. ANY PERSON, CORPORATION OR OTHER FIRM RECEIVING IT IS DEEMED,          BY RECEIVING IT, TO AGREE THAT IT, AND/OR ANY PART OF IT, SHALL NOT BE DISCLOSED          TO ANY PERSON, CORPORATION OR OTHER ENTITY, DUPLICATED, AND/OR USED, EXCEPT          AS EXPRESSLY APPROVED IN WRITING IN ADVANCE BY OWNER. THIS DOCUMENT SHALL          BE RETURNED TO OWNER UPON REQUEST. IT MAY BE SUBJECT TO CERTAIN          RESTRICTIONS UNDER APPLICABLE EXPORT CONTROL LAWS AND REGULATIONS.</small>		

TOLERANCES UNLESS OTHERWISE SPECIFIED:			
DEC.	INCH	mm	ANGLE
.X	±0.1	[±2.5]	±0.5°
.XX	±0.03	[±0.76]	
.XXX	±0.005	[±0.127]	
.XXXX	±0.0005	[±0.0127]	
REMOVE BURRS & BREAK SHARP			
EDGES: .003/.015 [076/.381] X 45°			
CORNER FILLETS: R.02 [51]			
MACHINED SURFACES: 125/3.2			
mm SHOWN IN [BRACKETS]			

DRAWN BY RLW	REGAL™ Regal Beloit America, Inc.	
DATE 06/16/03	DESCRIPTION OUTLINE	
APPROVED BY	MATERIAL	PROCESS/FINISH
DATE	56 FRAME DRIP PROOF-RIGID "C"	
REFERENCE 028541	DRAWING NUMBER 028541	SHEET 1 OF 1
THIRD ANGLE PROJECTION	SIZE B	

005010-01

VIEW FROM OUTSIDE OF MOTOR AT SWITCH END.



VOLTAGE	L1	L2	L3	JOIN & INSULATE
HIGH	T1	T2	T3	(T4,T7) (T5,T8) (T6,T9)
LOW	T1,T7	T2,T8	T3,T9	T4,T5,T6

				TOLERANCES UNLESS SPECIFIED		<b>Regal Beloit America, Inc.</b>		DRAWN RDW 04/12/02			
				DEC.	INCHES			CHK			
				.X	±.1			APPD			
				.XX	±.01			SCALE 1=1			
				.XXX	±.005	TITLE		REF FIG.2-51			
A	UPDATED TO REGAL LOGO	SAJ 06/26/15	AJY	.XXXX	±.0005	MAT'L.		FMF			
NO.	REVISION	BY & DATE	CHK	ANG	±1/2"	FINISH		PREV			
THIS DRAWING IN DESIGN AND DETAIL IS OUR PROPERTY AND MUST NOT BE USED EXCEPT IN CONNECTION WITH OUR WORK ALL RIGHTS OF DESIGN AND INVENTION ARE RESERVED THIS IS AN ELECTRONICALLY GENERATED DOCUMENT - DO NOT SCALE THIS PRINT				RFP	04/12/02	CAD FILE		00501001	SIZE	DRAWING NO.	REV.
				DIST		BRF-NLV		A	005010-01	A	



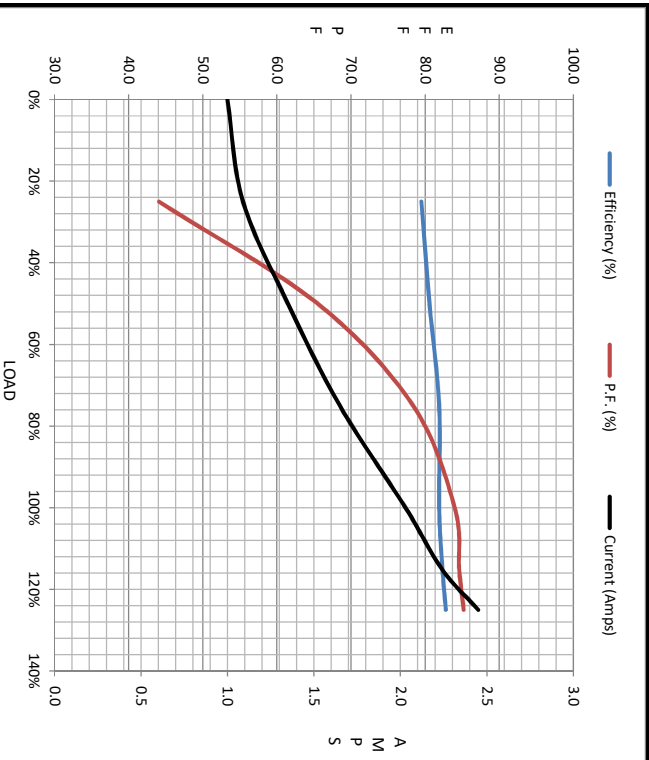
Load	0%	25%	50%	75%	100%	115%	125%	LR
Current (Amps)	1.00	1.09	1.35	1.65	2.03	2.24	2.45	15.0
Torque (ft-lb)	0.00	0.60	1.13	1.69	2.25	2.53	2.81	6.4
RPM	3600	3572	3540	3512	3480	3466	3444	0
Efficiency (%)		79.5	80.6	81.9	81.9	82.4	82.8	
P.F. (%)	14.8	44.1	65.5	78.4	84.0	84.6	85.2	0.0

Motor Speed Data

	LR	Pull-Up	BD	Rated	Idle
Speed (RPM)	0	400	2400	3480	3600
Current (Amps)	15.0	13.8	9.0	2.03	1.00
Torque (ft-lb)	6.4	6.0	8.1	2.25	0.00

Information Block

HP	1.5
Sync. RPM	3600
Frame	140
Enclosure	DP
Construction	NA
Voltage	208-230/460 V
Frequency	60 Hz
Design	B
LR Code letter	K
Service Factor	1.15
Temp Rise @ FL	0 °C
Duty	CONT
Ambient	40 °C
Elevation	1,000 feet
Rotor/Shaft wk <sup>2</sup>	0.05 LB-Ft <sup>2</sup>
Ref Wdg	T632162 DR
Sound Pressure @ 1M	0 dBA
VFD Rating	NONE
Outline Dwg	028941-600
Conn. Diag	005010.01
Additional Specifications:	
0	
EQUIV CKT (OHMS / PHASE)	
R1	R2
0.0000	0.0000
X1	X2
0.0000	0.0000
Xm	Xm
0.0000	0.0000



Speed - Torque Curve

