

PRODUCT INFORMATION PACKET



Model No: M6C14FC7J

Catalog No: 113923.00

3/4HP..55kW.1425RPM.56.IP54./V.1PH.50HZ.CONT.MANUAL.40C.1.0SF.C FACE.50 HERTZ.M6C14FC7J
50 Hz



Regal and Leeson are trademarks of Regal Beloit Corporation or one of its affiliated companies.

©2018 Regal Beloit Corporation, All Rights Reserved. MC017097E





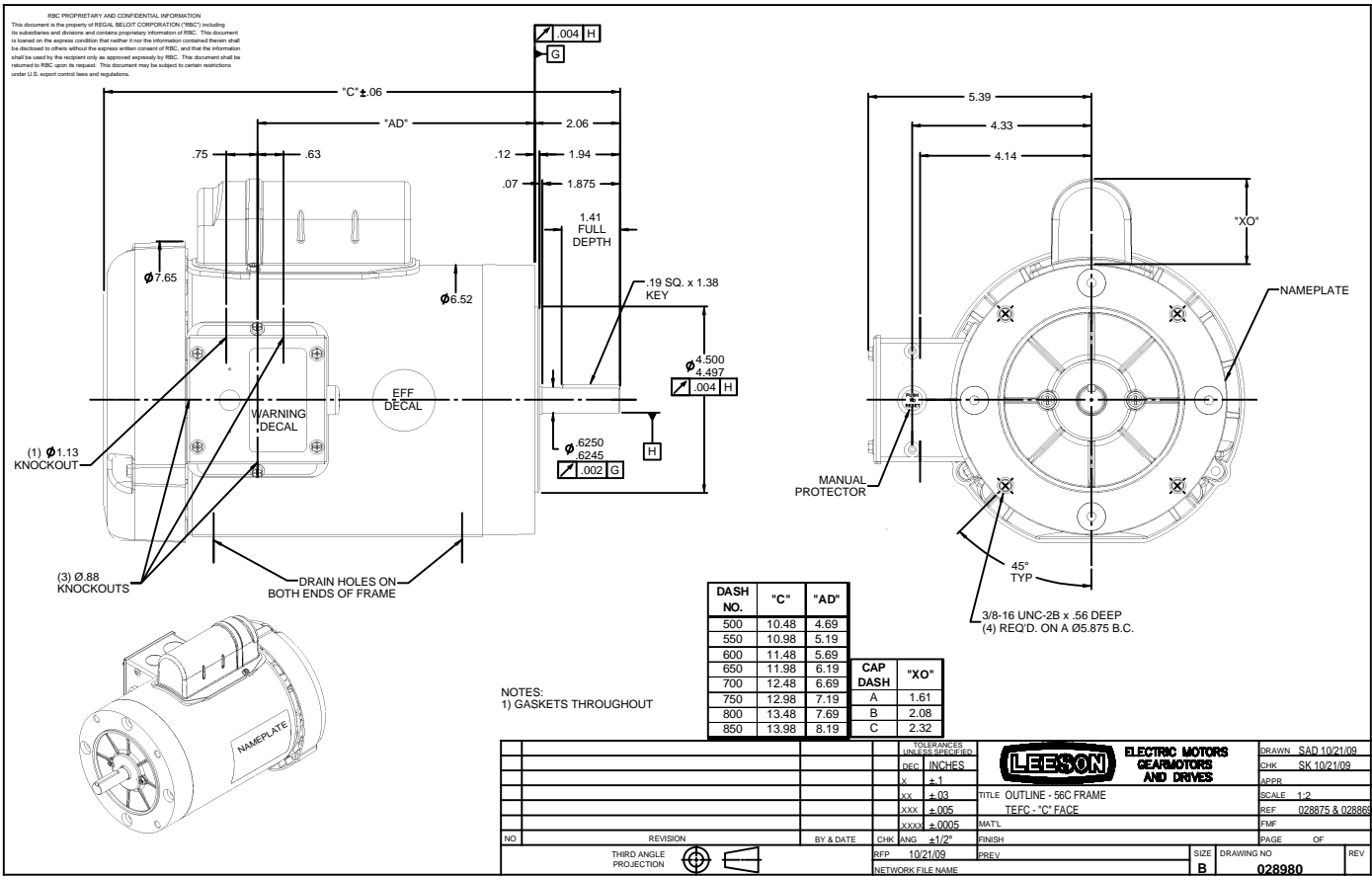
Nameplate Specifications

Output HP	0.75 Hp	Output KW	0.56 kW
Frequency	50 Hz	Voltage	110/220 V
Current	11.8/5.9 A	Speed	1425 rpm
Service Factor	1	Phase	1
Efficiency	68 %	Duty	Continuous
Insulation Class	F	Design Code	NO DESIGN CODE
KVA Code	J	Frame	56C
Enclosure	Totally Enclosed Fan Cooled	Overload Protector	Manual
Ambient Temperature	40 °C	Drive End Bearing Size	6203
Opp Drive End Bearing Size	6203	UL	Recognized
CSA	Y	CE	Y
IP Code	54		

Technical Specifications

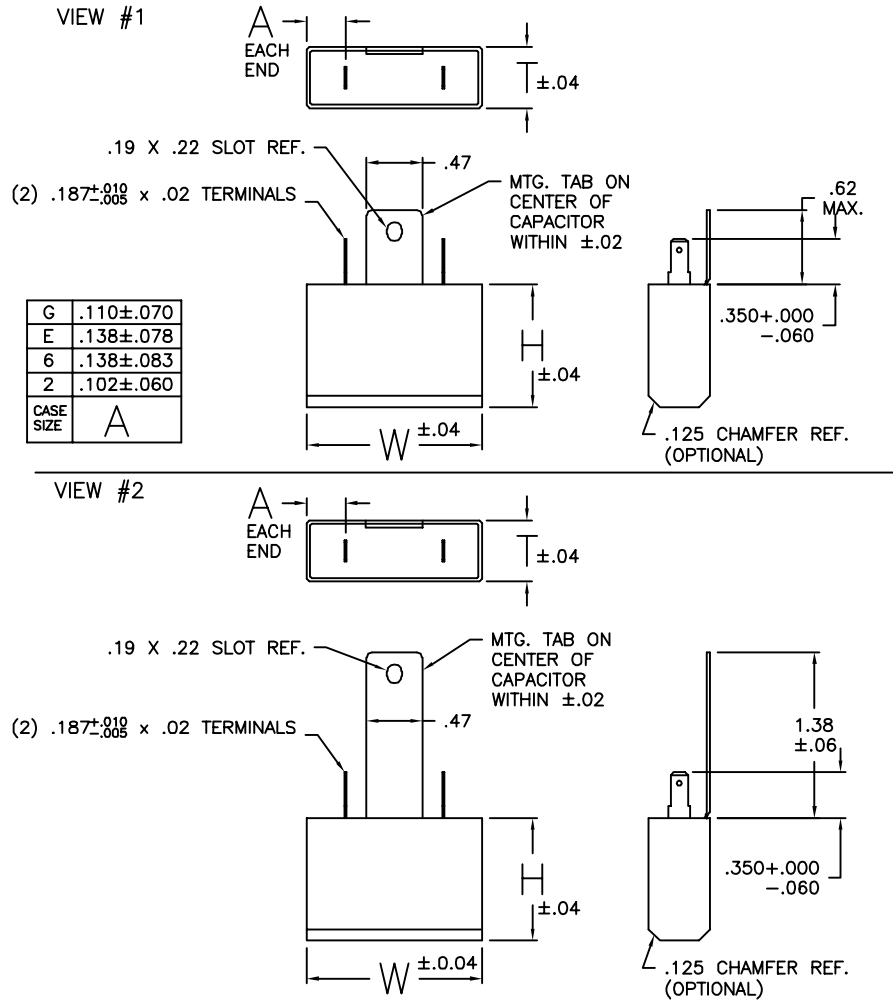
Electrical Type	Capacitor Start Induction Run	Starting Method	Across The Line
Poles	4	Rotation	Selective Counterclockwise
Mounting	Round	Motor Orientation	HORIZONTAL
Drive End Bearing	BALL	Opp Drive End Bearing	BALL
Frame Material	Rolled Steel	Shaft Type	NEMA 56
Overall Length	11.98 in	Frame Length	6.50 in
Shaft Diameter	0.625 in	Shaft Extension	1.88 in
Assembly/Box Mounting	F1 ONLY		
Outline Drawing	028980-650B	Connection Diagram	005382.02

This is an uncontrolled document once printed or downloaded and is subject to change without notice. Date Created: 10/15/2018



REV	REFERENCE ECN	REFERENCE PROJECT	REV BY	DATE	APPD	DATE
J.00	ECN-01172301	PRJ-01172301	sbowli	10-13-2005		

60P84



NOTES:

1. U.L. RECOGNIZED CAPACITOR. UL MARKING TO BE STAMPED ON CAPACITORS.
2. METALLIZED POLYPROPYLENE CAPACITOR.
3. MAX. OPERATING TEM. -85° C.
4. POTTING COMPOUND CAN BE EITHER BLACK (URETHANE) OR BLUE (POLYURETHANE).

22	3	250	.58	1.02	1.44	1	JE2E032	2
21	3	370	.75	1.15	1.46	1	JF1G095	G
20	OBSOLETE							
19	6	250	.58	1.02	1.44	2	JF1G072	2
18	2.5	250	.58	1.02	1.44	1	JE2C005	2
17	5	250	.58	1.02	1.44	2	JF1G072	2
16	2	370	.75	1.15	1.46	1	JE2F032	G
15	2	250	.58	1.02	1.44	1	JE2E020	2
14	OBSOLETE							
13	6	250	.58	1.02	1.44	1	JE2F025	2
12	10	250	.75	1.15	1.46	1	CE2F014	G
11	5	250	.58	1.02	1.44	1	JE1E017	2
10	4	250	.58	1.02	1.44	1	JE1D006	2
9	7.5	250	.75	1.15	1.46	1	JE1E015	G
8	4	370	.88	1.26	2.11	1	JE1D006	6
7	5	370	.88	1.26	2.11	1	JE1E017	6
6	6	370	.88	1.26	2.11	1	JE1E016	6
5	7.5	370	.93	1.40	2.30	1	JE1E015	E
4	5	370	.88	1.26	2.11	2	JE1H030	6
3	OBSOLETE							
2	4	250	.58	1.02	1.44	1	JE1E011	2
1	15	250	.88	1.26	2.11	1	JE2G071	6
GR. NO.	MFD ±10%	VAC	T	H	W	VIEW	FIRST USED ON	CASE SIZE

USE GRP. 10

GEOMETRIC CHARACTERISTICS & SYMBOLS
 □ FLATNESS
 — STRAIGHTNESS
 ∠ ANGULARITY
 ⊥ PERPENDICULARITY (SQUARENESS)
 // PARALLELISM
 ○ ROUNDNESS (CIRCULARITY)
 ∅ CYLINDRICITY
 △ PROFILE OF ANY SURFACE
 ∩ PROFILE OF ANY LINE
 ↗ RUNOUT
 ⊕ TRUE POSITION
 ⊙ CONCENTRICITY
 = SYMMETRY

UNLESS OTHERWISE SPECIFIED DIM. TOLERANCES ARE AS FOLLOWS:
 X XX XXX XXXX
 INCH ±.1 ±.02 ±.005 ±.0005
 mm ±0.5 ±0.13 ±0.013
 ANG. ±.50 DEG
 REMOVE BURRS & BREAK SHARP EDGES:
 INCH .003-.015 mm 0.1-0.4
 CORNER FILLETS TO:
 INCH .020 mm 0.5
 MACHINE SURFACES:
 INCH 125 mm 3:2
 METRIC DIMS. SHOWN IN [BRACKETS]

DR BY: jimerm 12-03-2002
 APPD:
 THIRD ANGLE PROJECTION
 EDS DATE
 FORMAT REV B
 CONFIDENTIAL: THIS DRAWING AND ITS INFORMATION ARE THE EXCLUSIVE AND CONFIDENTIAL PROPERTY OF A.O. SMITH CORP. AND ARE NOT TO BE DISCLOSED, DUPLICATED, DISTRIBUTED OR OTHERWISE USED WITHOUT THE WRITTEN CONSENT OF A.O. SMITH CORP.
 -ALL RIGHTS RESERVED.

A.O. SMITH
 ELECTRICAL PRODUCTS COMPANY
TIPP CITY, OHIO

A DIVISION OF A. O. SMITH CORPORATION
COPYRIGHT 1995

DESCRIPTION
DRY FILM CAPACITOR
60P84

SCALE NONE SHEET 1

GR. NO. A DWG NO. 00538202

