

# PRODUCT INFORMATION PACKET



Model No: M6C14FC6K

Catalog No: 113922.00

1/2HP..37kW.1425RPM.56.IP54./V.1PH.50HZ.CONT.MANUAL.40C.1.15SF.C FACE.50 HERTZ.M6C14FC6K  
50 Hz



Regal and Leeson are trademarks of Regal Beloit Corporation or one of its affiliated companies.

©2018 Regal Beloit Corporation, All Rights Reserved. MC017097E





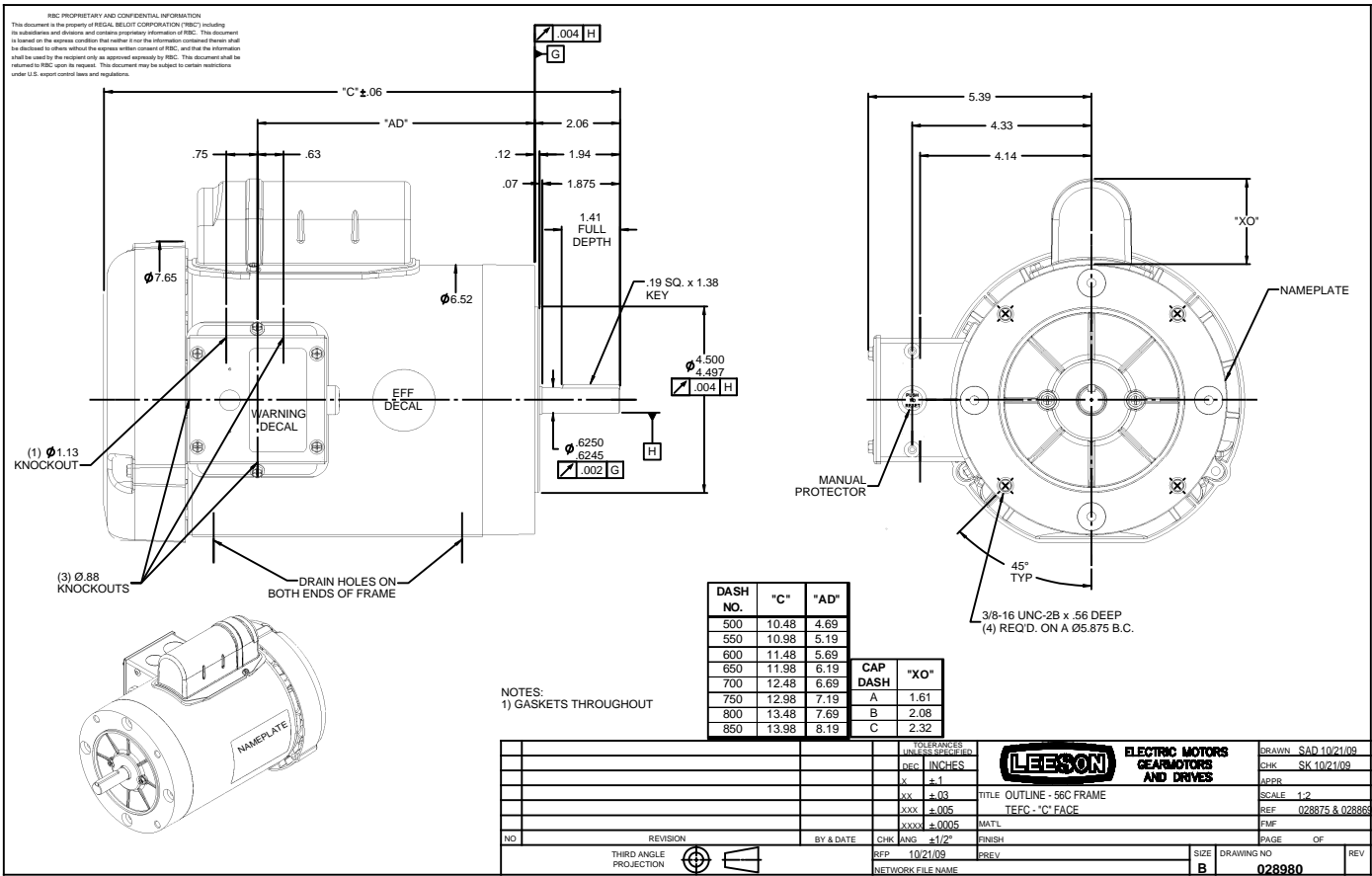
### Nameplate Specifications

Output HP	<b>0.50 Hp</b>	Output KW	<b>0.37 kW</b>
Frequency	<b>50 Hz</b>	Voltage	<b>110/220 V</b>
Current	<b>8.2/4.1 A</b>	Speed	<b>1425 rpm</b>
Service Factor	<b>1.15</b>	Phase	<b>1</b>
Efficiency	<b>69 %</b>	Duty	<b>Continuous</b>
Insulation Class	<b>B</b>	Design Code	<b>NO DESIGN CODE</b>
KVA Code	<b>K</b>	Frame	<b>56C</b>
Enclosure	<b>Totally Enclosed Fan Cooled</b>	Overload Protector	<b>Manual</b>
Ambient Temperature	<b>40 °C</b>	Drive End Bearing Size	<b>6203</b>
Opp Drive End Bearing Size	<b>6203</b>	UL	<b>Recognized</b>
CSA	<b>Y</b>	CE	<b>Y</b>
IP Code	<b>54</b>		

### Technical Specifications

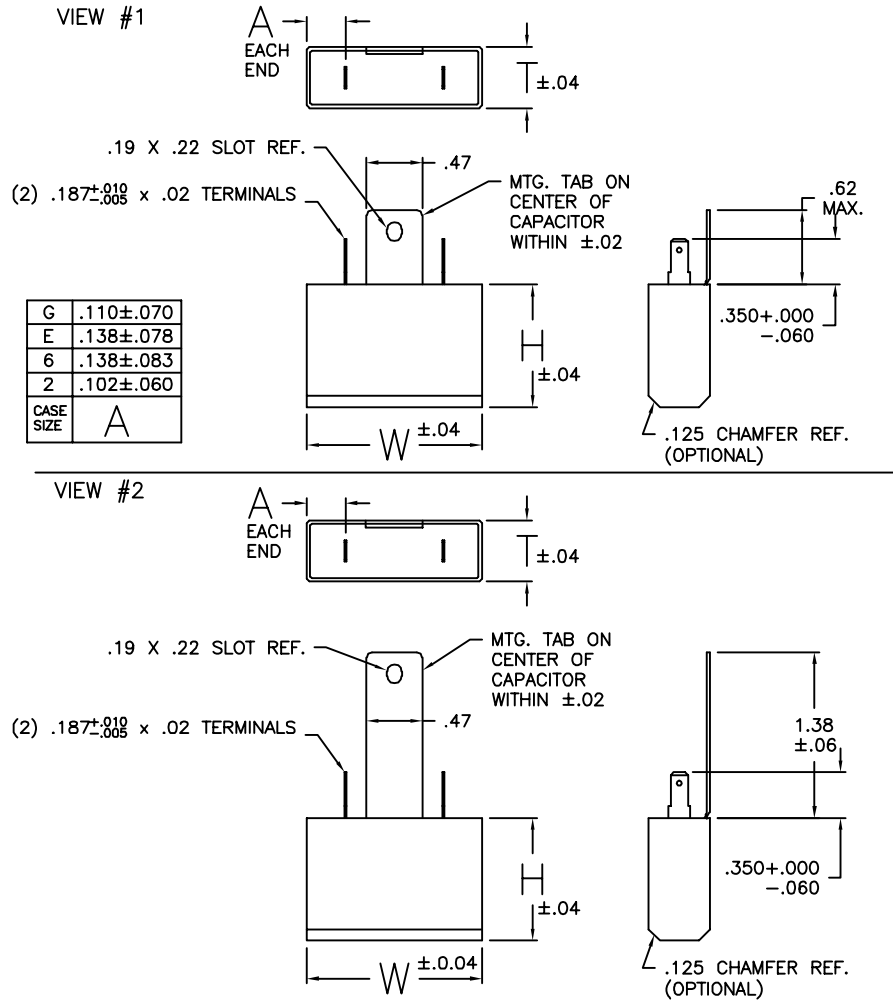
Electrical Type	<b>Capacitor Start Induction Run</b>	Starting Method	<b>Across The Line</b>
Poles	<b>4</b>	Rotation	<b>Selective Counterclockwise</b>
Mounting	<b>Round</b>	Motor Orientation	<b>HORIZONTAL</b>
Drive End Bearing	<b>BALL</b>	Opp Drive End Bearing	<b>BALL</b>
Frame Material	<b>Rolled Steel</b>	Shaft Type	<b>NEMA 56</b>
Overall Length	<b>11.48 in</b>	Frame Length	<b>6.00 in</b>
Shaft Diameter	<b>0.625 in</b>	Shaft Extension	<b>1.88 in</b>
Assembly/Box Mounting	<b>F1 ONLY</b>		
Outline Drawing	<b>028980-600B</b>	Connection Diagram	<b>005382.02</b>

**This is an uncontrolled document once printed or downloaded and is subject to change without notice. Date Created: 10/15/2018**



REV	REFERENCE ECN	REFERENCE PROJECT	REV BY	DATE	APPD	DATE
J.00	ECN-01172301	PRJ-01172301	sbowli	10-13-2005		

60P84



**NOTES:**

1. U.L. RECOGNIZED CAPACITOR. UL MARKING TO BE STAMPED ON CAPACITORS.
2. METALLIZED POLYPROPYLENE CAPACITOR.
3. MAX. OPERATING TEM. -85° C.
4. POTTING COMPOUND CAN BE EITHER BLACK (URETHANE) OR BLUE (POLYURETHANE).

22	3	250	.58	1.02	1.44	1	JE2E032	2
21	3	370	.75	1.15	1.46	1	JF1G095	G
20	OBSOLETE							
19	6	250	.58	1.02	1.44	2	JF1G072	2
18	2.5	250	.58	1.02	1.44	1	JE2C005	2
17	5	250	.58	1.02	1.44	2	JF1G072	2
16	2	370	.75	1.15	1.46	1	JE2F032	G
15	2	250	.58	1.02	1.44	1	JE2E020	2
14	OBSOLETE							
13	6	250	.58	1.02	1.44	1	JE2F025	2
12	10	250	.75	1.15	1.46	1	CE2F014	G
11	5	250	.58	1.02	1.44	1	JE1E017	2
10	4	250	.58	1.02	1.44	1	JE1D006	2
9	7.5	250	.75	1.15	1.46	1	JE1E015	G
8	4	370	.88	1.26	2.11	1	JE1D006	6
7	5	370	.88	1.26	2.11	1	JE1E017	6
6	6	370	.88	1.26	2.11	1	JE1E016	6
5	7.5	370	.93	1.40	2.30	1	JE1E015	E
4	5	370	.88	1.26	2.11	2	JE1H030	6
3	OBSOLETE							
2	4	250	.58	1.02	1.44	1	JE1E011	2
1	15	250	.88	1.26	2.11	1	JE2G071	6
GR. NO.	MFD ±10%	VAC	T	H	W	VIEW	FIRST USED ON	CASE SIZE

USE GRP. 10

**GEOMETRIC CHARACTERISTICS & SYMBOLS**  
 □ FLATNESS  
 — STRAIGHTNESS  
 ∠ ANGULARITY  
 ⊥ PERPENDICULARITY (SQUARENESS)  
 // PARALLELISM  
 ○ ROUNDNESS (CIRCULARITY)  
 ∅ CYLINDRICITY  
 △ PROFILE OF ANY SURFACE  
 ∩ PROFILE OF ANY LINE  
 ↗ RUNOUT  
 ⊕ TRUE POSITION  
 ◎ CONCENTRICITY  
 = SYMMETRY

UNLESS OTHERWISE SPECIFIED DIM. TOLERANCES ARE AS FOLLOWS:  
 X XX XXX XXXX  
 INCH ±.1 ±.02 ±.005 ±.0005  
 mm ±0.5 ±0.13 ±0.013  
 ANG. ±.50 DEG  
 REMOVE BURRS & BREAK SHARP EDGES:  
 INCH .003-.015 mm 0.1-0.4  
 CORNER FILLETS TO:  
 INCH .020 mm 0.5  
 MACHINE SURFACES:  
 INCH 125 mm 3:2  
 METRIC DIMS. SHOWN IN [BRACKETS]

DR BY: jimerm  
 12-03-2002  
 APPD:  
 THIRD ANGLE PROJECTION  
 CONFIDENTIAL: THIS DRAWING AND ITS INFORMATION ARE THE EXCLUSIVE AND CONFIDENTIAL PROPERTY OF A.O. SMITH CORP. AND ARE NOT TO BE DISCLOSED, DUPLICATED, DISTRIBUTED OR OTHERWISE USED WITHOUT THE WRITTEN CONSENT OF A.O. SMITH CORP.  
 -ALL RIGHTS RESERVED.

EDS DATE  
 FORMAT REV B

**A.O. SMITH**  
 ELECTRICAL PRODUCTS COMPANY  
TIPP CITY, OHIO

A DIVISION OF A. O. SMITH CORPORATION  
COPYRIGHT 1995

DESCRIPTION  
**DRY FILM CAPACITOR**  
**60P84**

SCALE NONE

DWG NO 00538202

SHEET 1

