

PRODUCT INFORMATION PACKET



Model No: C6T34DC65C

Catalog No: 113892.00

2HP..3450RPM.56.DP.230/460V.3PH.60HZ.CONT.NOT.40C.1.15SF.C FACE.JET PUMP.C6T34DC65C
Jet Pump



Regal and Leeson are trademarks of Regal Beloit Corporation or one of its affiliated companies.

©2018 Regal Beloit Corporation, All Rights Reserved. MC017097E





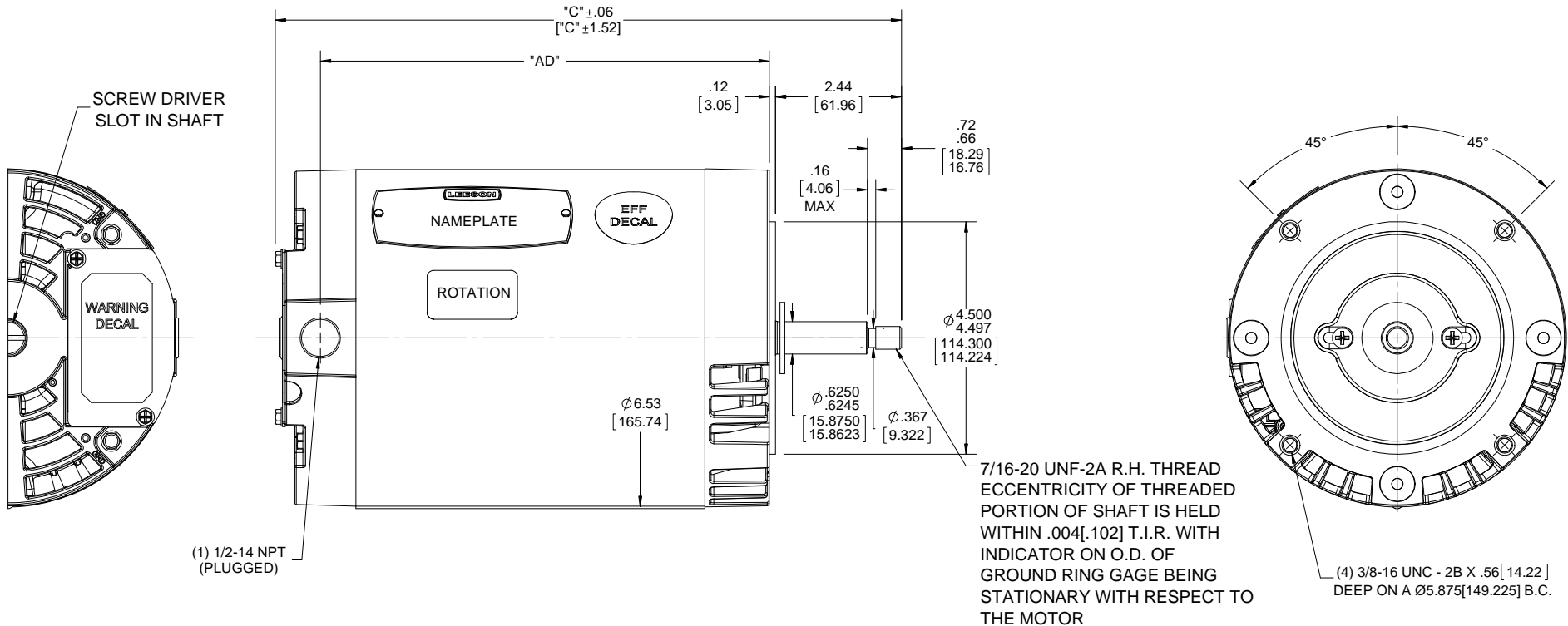
Nameplate Specifications

| | | | |
|----------------------------|---------------|------------------------|---------------|
| Output HP | 2 Hp | Output KW | 1.5 kW |
| Frequency | 60 Hz | Voltage | 208-230/460 V |
| Current | 5.8-5.6/2.8 A | Speed | 3450 rpm |
| Service Factor | 1.15 | Phase | 3 |
| Efficiency | 82.5 % | Duty | Continuous |
| Insulation Class | B | Design Code | B |
| KVA Code | L | Frame | 56J |
| Enclosure | Drip Proof | Overload Protector | No |
| Ambient Temperature | 40 °C | Drive End Bearing Size | 6203 |
| Opp Drive End Bearing Size | 6203 | UL | Recognized |
| CSA | Y | CE | N |
| IP Code | 22 | | |

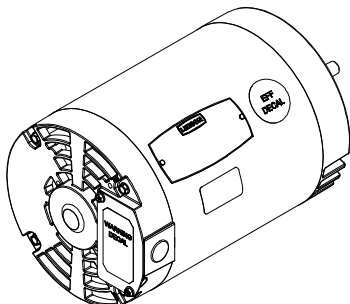
Technical Specifications

| | | | |
|-----------------------|-----------------------------|-----------------------|-----------------|
| Electrical Type | Squirrel Cage Induction Run | Starting Method | Across The Line |
| Poles | 2 | Rotation | Reversible |
| Mounting | Round | Motor Orientation | HORIZONTAL |
| Drive End Bearing | BALL | Opp Drive End Bearing | BALL |
| Frame Material | Rolled Steel | Shaft Type | J |
| Overall Length | 11.84 in | Frame Length | 6.50 in |
| Shaft Diameter | 0.625 in | Shaft Extension | 2.44 in |
| Assembly/Box Mounting | F1 ONLY | | |
| Outline Drawing | 029062-675 | Connection Diagram | 005010.01 |

This is an uncontrolled document once printed or downloaded and is subject to change without notice. Date Created: 10/15/2018



(1) 1/2-14 NPT (PLUGGED)



- NOTES:
- 1) FLINGER ON SHAFT
 - 2) STAINLESS STEEL SHAFT EXTENSION
 - 3) MAXIMUM FACE RUNOUT TO BE .004[.102] T.I.R.
 - 4) MAXIMUM PILOT ECCENTRICITY .004[.102] T.I.R.

| DASH NO. | "C" | "AD" |
|----------|----------------|---------------|
| 675 | 12.09 [307.09] | 8.69 [220.73] |

| | | | | | |
|--|-------------|------|--|--------------------------|---|
| DRAWING REVISION A | REVISION BY | DATE | TOLERANCES UNLESS OTHERWISE SPECIFIED: DEC. INCH mm ANGLE .X ±0.1 [±2.5] ±7°-30° .XX ±0.03 [±0.76] .XXX ±0.005 [±0.127] .XXXX ±0.0005 [±0.0127] | DRAWN BY T AHER | Regal Beloit America, Inc. |
| ECO ECO-0139523 | APPROVED BY | DATE | REMOVE BURRS & BREAK SHARP EDGES: .003/.015 [0.076/.381] X 45° CORNER FILLETS: R.02 [51] | DATE 12/12/2017 | |
| ECO DESCRIPTION OUTLINE CONVERSION PROJECT COPYRIGHT REGAL BELOIT AMERICA, INC. ALL RIGHTS RESERVED. PROPRIETARY AND CONFIDENTIAL INFORMATION - THIS DOCUMENT IS THE PROPERTY OF REGAL BELOIT AMERICA, INC. (OWNER) AND CONTAINS OWNER'S PROPRIETARY INFORMATION. ANY PERSON, CORPORATION OR OTHER FIRM RECEIVING IT IS DEEMED, BY RECEIVING IT, TO AGREE THAT IT, AND/OR ANY PART OF IT, SHALL NOT BE DISCLOSED TO ANY PERSON, CORPORATION OR OTHER ENTITY, DUPLICATED, AND/OR USED, EXCEPT AS EXPRESSLY APPROVED IN WRITING IN ADVANCE BY OWNER. THIS DOCUMENT SHALL BE RETURNED TO OWNER UPON REQUEST. IT MAY BE SUBJECT TO CERTAIN RESTRICTIONS UNDER APPLICABLE EXPORT CONTROL LAWS AND REGULATIONS. | | | MACHINED SURFACES: 200 5.1 INCH mm | APPROVED BY | DESCRIPTION OUTLINE 56 FRAME, DRIP PROOF - "C" FACE |
| | | | THIRD ANGLE PROJECTION | REFERENCE 028540 | MATERIAL |
| | | | SIZE B | DRAWING NUMBER 029062 | PROCESS/FINISH |
| | | | | | SHEET 1 OF 1 |

005010-01

VIEW FROM OUTSIDE OF MOTOR AT SWITCH END.



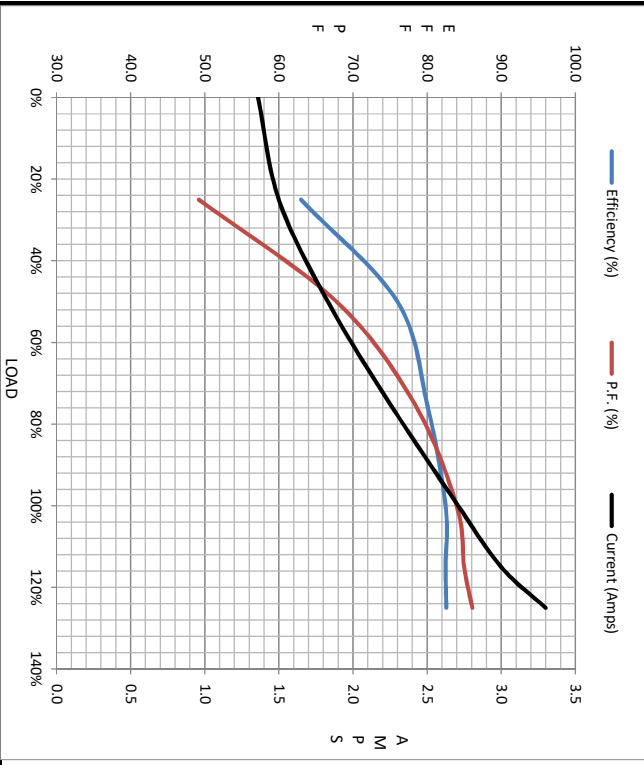
| VOLTAGE | L1 | L2 | L3 | JOIN & INSULATE |
|---------|-------|-------|-------|-------------------------------|
| HIGH | T1 | T2 | T3 | (T4,T7) (T5,T8) (T6,T9) |
| LOW | T1,T7 | T2,T8 | T3,T9 | T4,T5,T6 |

| | | | | | | | | | | | | |
|--|-----------------------|--|--|--------------------------------|----------|-----------------------------------|----------|--------------------|-----------------------|-----------|-------------|------|
| | | | | TOLERANCES UNLESS SPECIFIED | | Regal Beloit America, Inc. | | DRAWN RDW 04/12/02 | | | | |
| | | | | DEC. | INCHES | | | CHK | | | | |
| | | | | .X | ±.1 | | | APPD | | | | |
| | | | | .XX | ±.01 | | | SCALE 1=1 | | | | |
| | | | | .XXX | ±.005 | TITLE | | REF FIG.2-51 | | | | |
| A | UPDATED TO REGAL LOGO | | | SAJ | 06/26/15 | AJY | .XXXX | ±.0005 | MAT'L. DECAL - 004014 | FMF | | |
| NO. | REVISION | | | BY & DATE | CHK | ANG | ±1/2" | FINISH | PREV | | | |
| THIS DRAWING IN DESIGN AND DETAIL IS OUR PROPERTY AND MUST NOT BE USED EXCEPT IN CONNECTION WITH OUR WORK ALL RIGHTS OF DESIGN AND INVENTION ARE RESERVED THIS IS AN ELECTRONICALLY GENERATED DOCUMENT - DO NOT SCALE THIS PRINT | | | | RFP | 04/12/02 | | CAD FILE | 00501001 | | SIZE | DRAWING NO. | REV. |
| | | | | DIST | BRF-NLV | | | | A | 005010-01 | | A |



| Motor Load Data | | | | | | | | |
|-----------------|------|------|------|------|------|------|------|------|
| Load | 0% | 25% | 50% | 75% | 100% | 115% | 125% | LR |
| Current (Amps) | 1.36 | 1.50 | 1.83 | 2.25 | 2.71 | 3.0 | 3.3 | 25.0 |
| Torque (ft-lb) | 0.00 | 0.73 | 1.49 | 2.24 | 3.0 | 3.5 | 3.8 | 10.0 |
| RPM | 3600 | 3573 | 3550 | 3525 | 3499 | 3485 | 3471 | 0 |
| Efficiency (%) | | 63.0 | 76.0 | 80.0 | 82.5 | 82.5 | 82.6 | |
| P.F. (%) | 13.8 | 49.2 | 67.8 | 78.3 | 84.0 | 85.0 | 86.1 | 0.0 |

| Motor Speed Data | | | | | Information Block | | | | | |
|-----------------------------|--------------------------|---------|--------|--------|-------------------|-----|-----------|-------|-----------|--------------|
| | LR | Pull-Up | BD | Rated | Idle | HP | Sync. RPM | Frame | Enclosure | Construction |
| Speed (RPM) | 0 | 400 | 2500 | 3499 | 3600 | 2.0 | 3600 | 140 | DP | NA |
| Current (Amps) | 25.0 | 20.0 | 18.0 | 2.71 | 1.36 | | | | | |
| Torque (ft-lb) | 10.0 | 9.8 | 12.2 | 3.0 | 0.00 | | | | | |
| Voltage | 208-230/460#190/380 V | | | | | | | | | |
| Frequency | 60 Hz | | | | | | | | | |
| Design | A | | | | | | | | | |
| LR Code letter | L | | | | | | | | | |
| Service Factor | 1.15 | | | | | | | | | |
| Temp Rise @ FL | 50 °C | | | | | | | | | |
| Duty | CONT | | | | | | | | | |
| Ambient | 40 °C | | | | | | | | | |
| Elevation | 1,000 feet | | | | | | | | | |
| Rotor/Shaft wk ² | 0.06 LB-Ft ² | | | | | | | | | |
| Ref Wdg | T632163 DR | | | | | | | | | |
| Sound Pressure @ 1M | 0 dBA | | | | | | | | | |
| VFD Rating | NONE | | | | | | | | | |
| Outline Dwg | 028540-650 | | | | | | | | | |
| Conn. Diag | 005010.01 | | | | | | | | | |
| Additional Specifications: | | | | | | | | | | |
| | EQUIV CKT (OHMS / PHASE) | | | | | | | | | |
| | R1 | R2 | X1 | X2 | Xm | | | | | |
| | 0.0000 | 0.0000 | 0.0000 | 0.0000 | 0.0000 | | | | | |



| Efficiency (%) | P.F. (%) | Current (Amps) |
|----------------|----------|----------------|
| 13.8 | 0.00 | 25.0 |
| 49.2 | 0.73 | 20.0 |
| 67.8 | 1.49 | 18.0 |
| 78.3 | 2.24 | 2.71 |
| 84.0 | 3.0 | 1.36 |
| 85.0 | 3.5 | 1.50 |
| 86.1 | 3.8 | 1.83 |

