

# PRODUCT INFORMATION PACKET



Model No: M6C17FB7J

Catalog No: 110022.00

..3/4HP..1725RPM.56.TEFC.115/208-230V.1PH.60HZ.CONT.40C.1.15SF.RIGID.M6C17FB7....GENERAL PURPOSE.MANUAL....0.56KW...

Totally Enclosed Fan Cooled (TEFC)



Regal and Leeson are trademarks of Regal Beloit Corporation or one of its affiliated companies.

©2018 Regal Beloit Corporation, All Rights Reserved. MC017097E







## Nameplate Specifications

Output HP	<b>0.75 Hp</b>	Output KW	<b>0.56 kW</b>
Frequency	<b>60 Hz</b>	Voltage	<b>115/208-230 V</b>
Current	<b>10.8/5.4 A</b>	Speed	<b>1725 rpm</b>
Service Factor	<b>1.15</b>	Phase	<b>1</b>
Efficiency	<b>70 %</b>	Duty	<b>Continuous</b>
Insulation Class	<b>B</b>	Design Code	<b>N</b>
KVA Code	<b>L</b>	Frame	<b>56</b>
Enclosure	<b>Totally Enclosed Fan Cooled</b>	Overload Protector	<b>Manual</b>
Ambient Temperature	<b>40 °C</b>	Drive End Bearing Size	<b>6203</b>
Opp Drive End Bearing Size	<b>6203</b>	UL	<b>Recognized</b>
CSA	<b>Y</b>	CE	<b>N</b>
IP Code	<b>43</b>		

## Technical Specifications

Electrical Type	<b>Capacitor Start Induction Run</b>	Starting Method	<b>Across The Line</b>
Poles	<b>4</b>	Rotation	<b>Selective Counterclockwise</b>
Mounting	<b>Rigid base</b>	Motor Orientation	<b>HORIZONTAL</b>
Drive End Bearing	<b>BALL</b>	Opp Drive End Bearing	<b>BALL</b>
Frame Material	<b>Rolled Steel</b>	Shaft Type	<b>NEMA 56</b>
Overall Length	<b>11.48 in</b>	Frame Length	<b>6.00 in</b>
Shaft Diameter	<b>0.625 in</b>	Shaft Extension	<b>1.88 in</b>
Assembly/Box Mounting	<b>F1 ONLY</b>		
Outline Drawing	<b>028793-600B</b>	Connection Diagram	<b>005003.03</b>

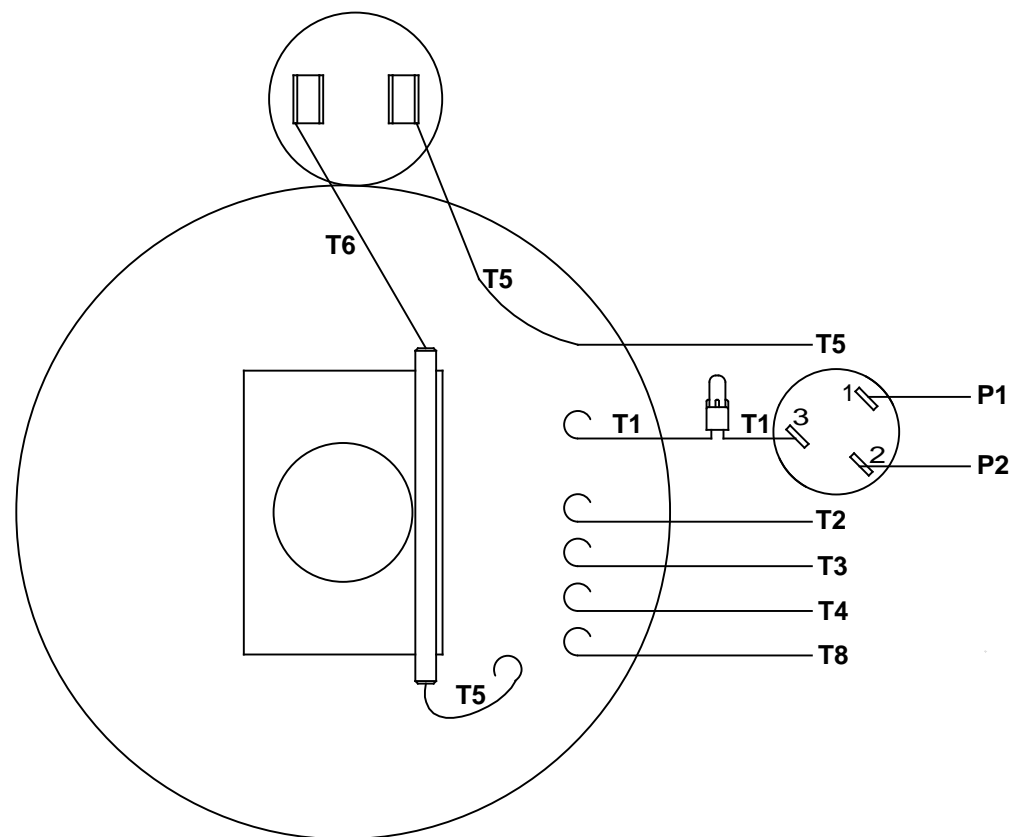
**This is an uncontrolled document once printed or downloaded and is subject to change without notice. Date Created: 10/15/2018**





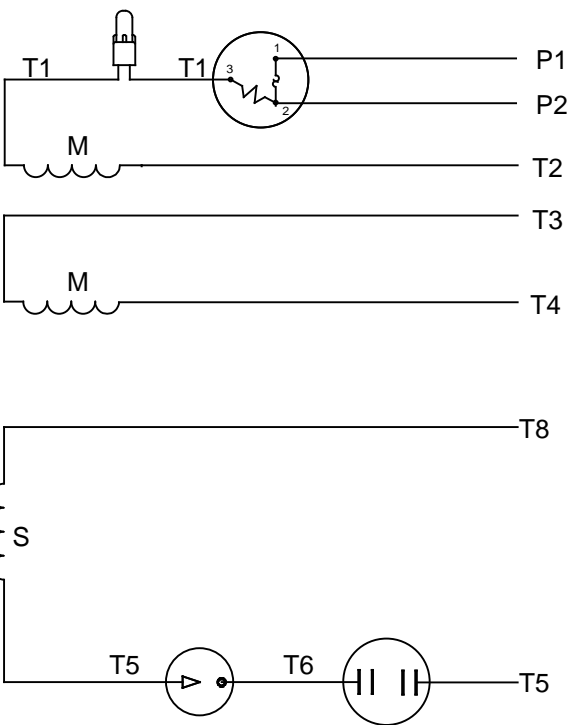


VIEW FROM OUTSIDE OF MOTOR AT SWITCH END




RBC PROPRIETARY AND CONFIDENTIAL INFORMATION  
This document is the property of REGAL BELOIT CORPORATION ("RBC") including its subsidiaries and divisions and contains proprietary information of RBC. This document is loaned on the express condition that neither it nor the information contained therein shall be disclosed to others without the express written consent of RBC, and that the information shall be used by the recipient only as approved expressly by RBC. This document shall be returned to RBC upon its request. This document may be subject to certain restrictions under U.S. export control laws and regulations.

LINE LEADS



	ROTATION FACING LEAD END	L1	L2	JOIN	INSULATE SEPARATELY
HIGH VOLT	C.C.W.	P1	T4 T5	T2,T3 T8	P2
	C.W.	P1	T4 T8	T2,T3 T5	P2
LOW VOLT	C.C.W.	P1	T2,T4 T5	P2,T3 T8	---
	C.W.	P1	T2,T4 T8	P2,T3 T5	---

		TOLERANCES UNLESS SPECIFIED			
		DEC	INCHES		
		.X	±.1		
		.XX	±.01		
06	REDRAWN IN SOLIDWORKS	VJB	7/22/2011	.XXX	±.005
05	REDRAWN ON CAD	DBT	05/27/97	.XXXX	±.0005
NO	REVISION	BY & DATE	CHK	ANG	±1/2°
		THIRD ANGLE PROJECTION		RFP	PREV
				NETWORK FILE NAME 00500303	

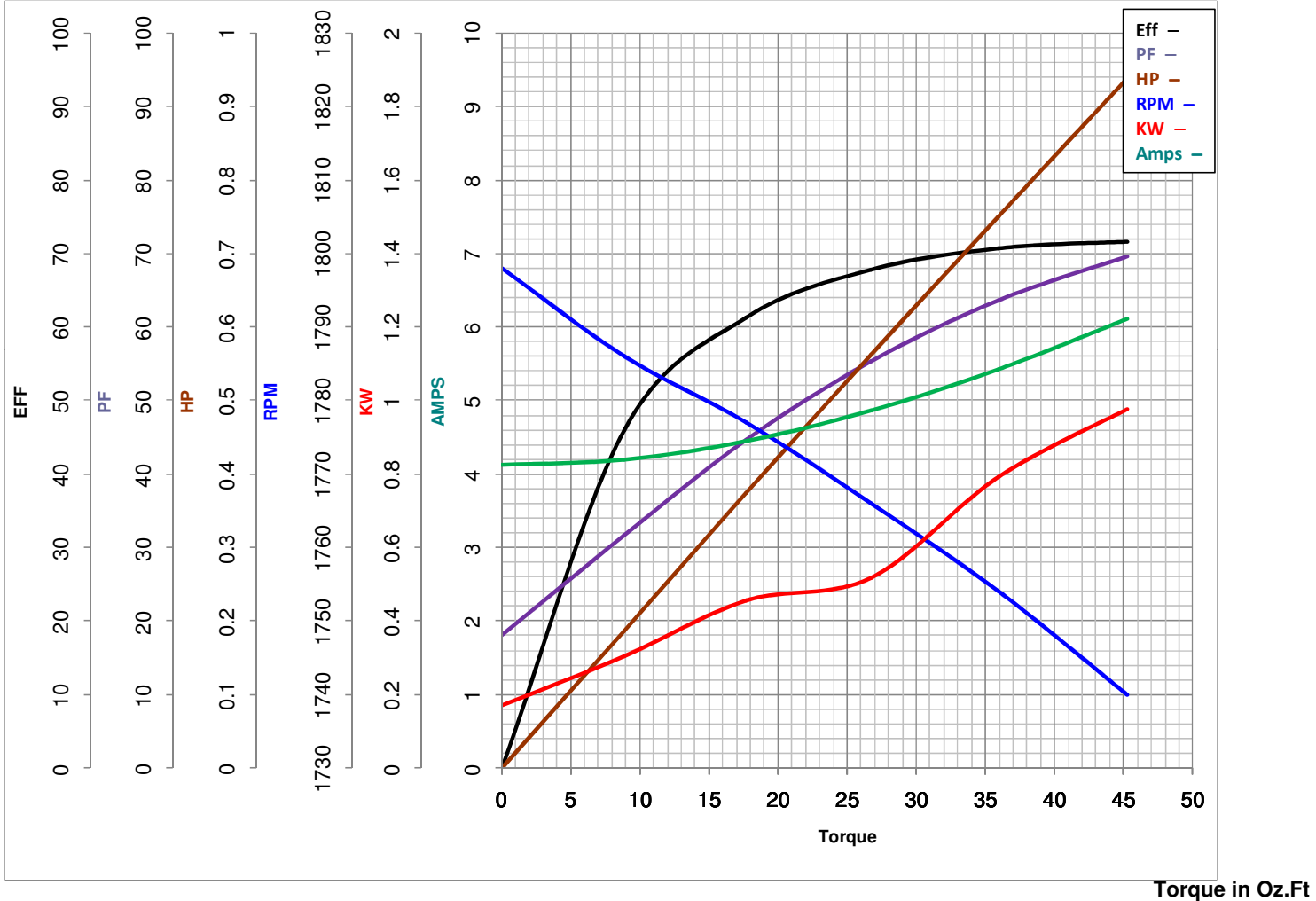
		ELECTRIC MOTORS GEARMOTORS AND DRIVES		DRAWN WLW 08/20/79	
				CHK ADN 08/27/76	
TITLE EXTERNAL WIRING DIAGRAM TYPE "C" W/PROTECTOR		MAT'L DECAL - 004011		APPR WRK 08/27/76	
				SCALE 1:1	
				REF	
				FMF	
				PAGE OF	
				SIZE A	
				DRAWING NO 005003-03	
				REV 06	





# LEESON ELECTRIC CORPORATION

## TYPICAL PERFORMANCE CURVE for AC MOTOR

Model No 110022.00Catalog No 110022.00Curve at 230  
60  
0.75Volts  
HZ  
HPHP 0.76VOLTS 115/208-230PHASE 1HZ 60RPM 1725

FL TORQUE 35.94 Oz.Ft  
 BD TORQUE 98.5 Oz.Ft  
 LR TORQUE 114.5 Oz.Ft

WINDING C634258-3

FL AMPS 10.8/5.4  
 PU TORQUE 84.2 Oz.Ft  
 LR AMPS 30.1

Date 3/22/2018