

PRODUCT INFORMATION PACKET



Model No: C4D18VK10A

Catalog No: 109299.00

109299.00..1/2HP..1800RPM.S56C.TENV.24VDC...CONT.40C.1.0SF.RIGID C.C4D18VK10.....DC NEMA
LOW VOLTAGE..WASHDOWN DUTY.....

Low Voltage



Regal and Leeson are trademarks of Regal Beloit Corporation or one of its affiliated companies.

©2018 Regal Beloit Corporation, All Rights Reserved. MC017097E



**Product Information Packet: Model No: C4D18VK10A, Catalog No:109299.00
 109299.00..1/2HP..1800RPM.S56C.TENV.24VDC...CONT.40C.1.0SF.RIGID C.C4D18VK10.....DC NEMA LOW
 VOLTAGE..WASHDOWN DUTY.....**



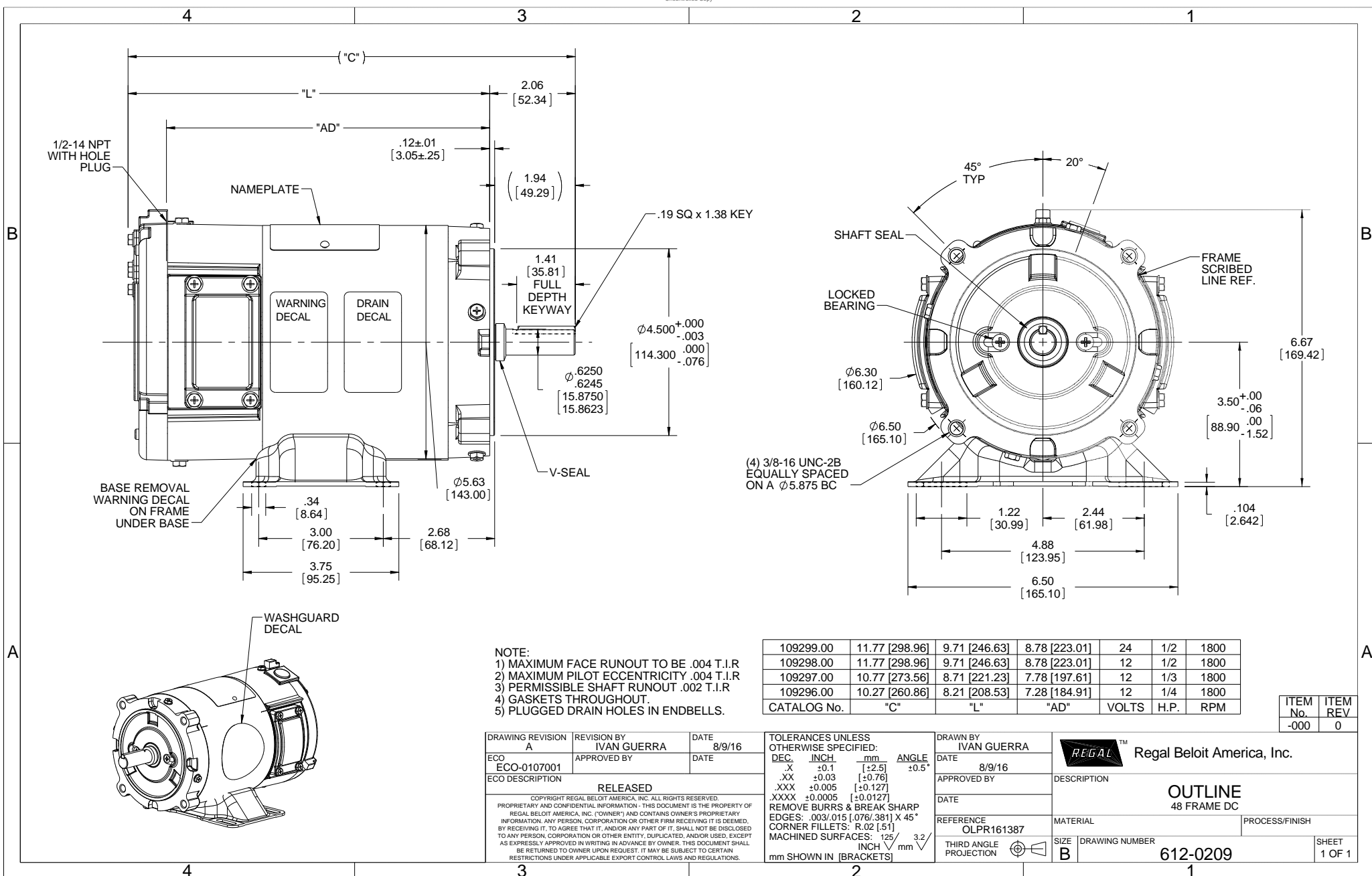
Nameplate Specifications

Output HP	0.50 Hp	Output KW	0.37 kW
Voltage	24 V	Current	20.0 A
Speed	1800 rpm	Service Factor	1
Efficiency	77 %	Duty	Continuous
Insulation Class	F	Frame	S56C
Enclosure	Totally Enclosed Non Ventilated	Overload Protector	No
Ambient Temperature	40 °C	Drive End Bearing Size	6203
Opp Drive End Bearing Size	6203	UL	Recognized
CSA	Y	CE	N

Technical Specifications

Rotation	Reversible	Mounting	Rigid C base
Overall Length	11.77 in	Frame Length	5.47 in
Shaft Diameter	0.625 in	Shaft Extension	2.06 in
Outline Drawing	612-0209-109299		

This is an uncontrolled document once printed or downloaded and is subject to change without notice. Date Created: 10/15/2018



- NOTE:
- 1) MAXIMUM FACE RUNOUT TO BE .004 T.I.R
 - 2) MAXIMUM PILOT ECCENTRICITY .004 T.I.R
 - 3) PERMISSIBLE SHAFT RUNOUT .002 T.I.R
 - 4) GASKETS THROUGHOUT.
 - 5) PLUGGED DRAIN HOLES IN ENDBELLS.

109299.00	11.77 [298.96]	9.71 [246.63]	8.78 [223.01]	24	1/2	1800
109298.00	11.77 [298.96]	9.71 [246.63]	8.78 [223.01]	12	1/2	1800
109297.00	10.77 [273.56]	8.71 [221.23]	7.78 [197.61]	12	1/3	1800
109296.00	10.27 [260.86]	8.21 [208.53]	7.28 [184.91]	12	1/4	1800
CATALOG No.	"C"	"L"	"AD"	VOLTS	H.P.	RPM

ITEM No.	ITEM REV
-000	0

DRAWING REVISION A	REVISION BY IVAN GUERRA	DATE 8/9/16
ECO ECO-0107001	APPROVED BY	DATE
ECO DESCRIPTION RELEASED		
<small>COPYRIGHT REGAL BELOIT AMERICA, INC. ALL RIGHTS RESERVED. PROPRIETARY AND CONFIDENTIAL INFORMATION - THIS DOCUMENT IS THE PROPERTY OF REGAL BELOIT AMERICA, INC. ("OWNER") AND CONTAINS OWNER'S PROPRIETARY INFORMATION. ANY PERSON, CORPORATION OR OTHER FIRM RECEIVING IT IS DEEMED, BY RECEIVING IT, TO AGREE THAT IT, AND/OR ANY PART OF IT, SHALL NOT BE DISCLOSED TO ANY PERSON, CORPORATION OR OTHER ENTITY, DUPLICATED, AND/OR USED, EXCEPT AS EXPRESSLY APPROVED IN WRITING IN ADVANCE BY OWNER. THIS DOCUMENT SHALL BE RETURNED TO OWNER UPON REQUEST. IT MAY BE SUBJECT TO CERTAIN RESTRICTIONS UNDER APPLICABLE EXPORT CONTROL LAWS AND REGULATIONS.</small>		

TOLERANCES UNLESS OTHERWISE SPECIFIED:			
DEC.	INCH	mm	ANGLE
.X	±0.1	[±2.5]	±0.5°
.XX	±0.03	[±0.76]	
.XXX	±0.005	[±0.127]	
.XXXX	±0.0005	[±0.0127]	
REMOVE BURRS & BREAK SHARP EDGES: .003/.015 [0.076/.381] X 45° CORNER FILLETS: R.02 [51]			
MACHINED SURFACES: 125 [√] 3.2 [√] INCH/mm			
mm SHOWN IN [BRACKETS]			

DRAWN BY IVAN GUERRA
DATE 8/9/16
APPROVED BY
DATE
REFERENCE OLPR161387
THIRD ANGLE PROJECTION

Regal Beloit America, Inc.	
DESCRIPTION OUTLINE 48 FRAME DC	
MATERIAL	PROCESS/FINISH
SIZE B	DRAWING NUMBER 612-0209
	SHEET 1 OF 1