

# PRODUCT INFORMATION PACKET



Model No: C4D18FK7A

Catalog No: 109107.00

2HP.1800RPM.ZLS56C.TEFC.36V.CONT.40C.1.0SF.RIGID C.DC NEMA LOW VOLTAGE.C4D18FK7A  
Low Voltage



Regal and Leeson are trademarks of Regal Beloit Corporation or one of its affiliated companies.

©2018 Regal Beloit Corporation, All Rights Reserved. MC017097E





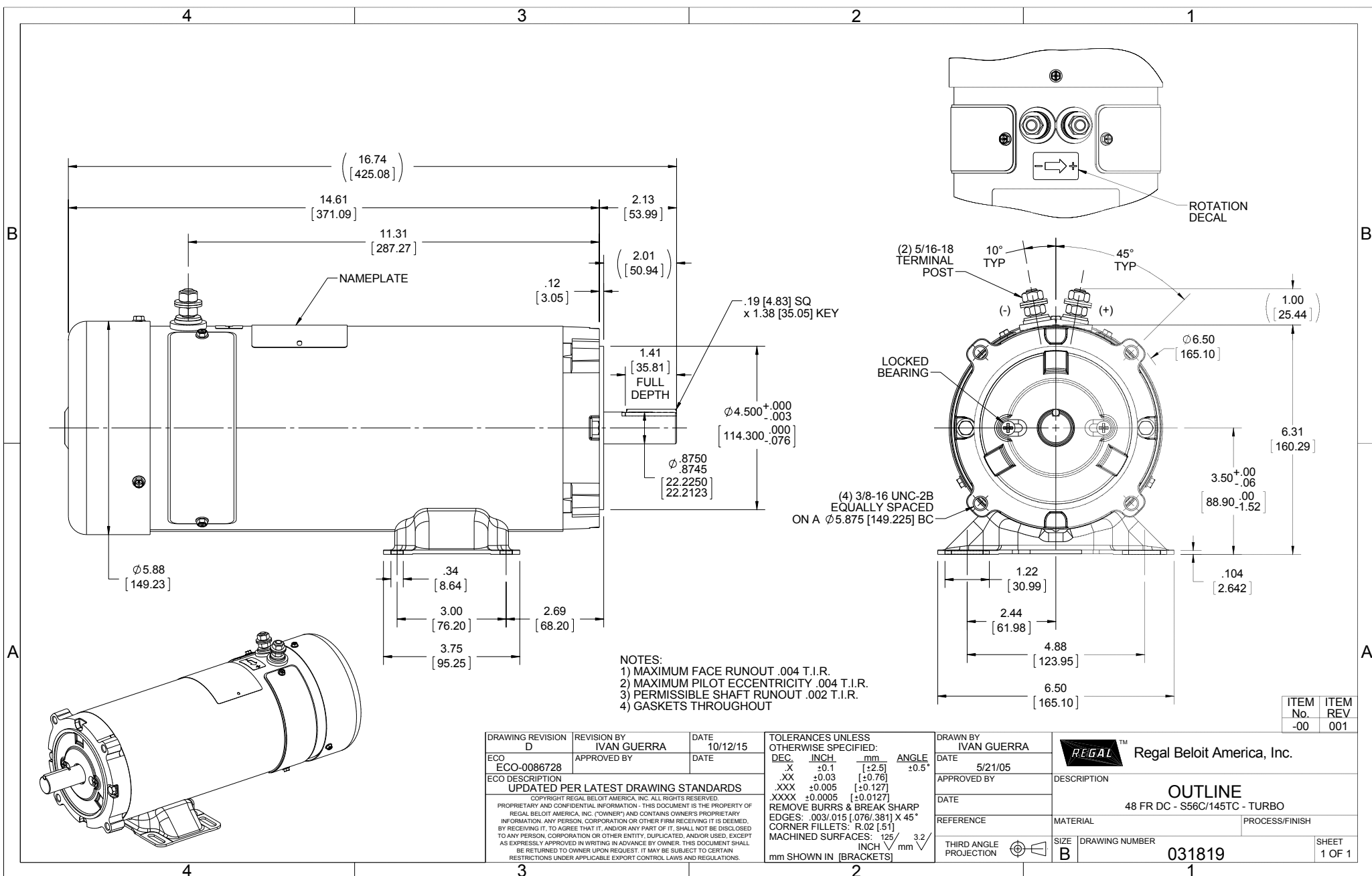
### Nameplate Specifications

Output HP	2 Hp	Output KW	1.5 kW
Voltage	36 V	Current	49.0 A
Speed	1800 rpm	Service Factor	1
Efficiency	81.8 %	Duty	Continuous
Insulation Class	F	Frame	ZLS56C
Enclosure	Totally Enclosed Fan Cooled	Overload Protector	No
Ambient Temperature	40 °C	Drive End Bearing Size	6205
Opp Drive End Bearing Size	6203	UL	Recognized
CSA	Y	CE	N

### Technical Specifications

Rotation	Reversible	Mounting	Rigid C base
Overall Length	16.74 in	Frame Length	11.50 in
Shaft Diameter	0.625 in	Shaft Extension	2.13 in
Outline Drawing	031819		

This is an uncontrolled document once printed or downloaded and is subject to change without notice. Date Created: 10/15/2018



ITEM No.	ITEM REV
-00	001

DRAWING REVISION <b>D</b>		REVISION BY <b>IVAN GUERRA</b>	DATE <b>10/12/15</b>	TOLERANCES UNLESS OTHERWISE SPECIFIED:		DRAWN BY <b>IVAN GUERRA</b>		Regal Beloit America, Inc.
ECO-0086728		APPROVED BY	DATE	DEC.	INCH	mm	ANGLE	
ECO DESCRIPTION <b>UPDATED PER LATEST DRAWING STANDARDS</b>		COPYRIGHT REGAL BELOIT AMERICA, INC. ALL RIGHTS RESERVED		X	±0.1	[±2.5]	±0.5°	DATE <b>5/21/05</b>
PROPRIETARY AND CONFIDENTIAL INFORMATION - THIS DOCUMENT IS THE PROPERTY OF REGAL BELOIT AMERICA, INC. (OWNER) AND CONTAINS OWNER'S PROPRIETARY INFORMATION. ANY PERSON, CORPORATION OR OTHER FIRM RECEIVING IT IS DEEMED, BY RECEIVING IT, TO AGREE THAT IT, AND/OR ANY PART OF IT, SHALL NOT BE DISCLOSED TO ANY PERSON, CORPORATION OR OTHER ENTITY, DUPLICATED, AND/OR USED, EXCEPT AS EXPRESSLY APPROVED IN WRITING IN ADVANCE BY OWNER. THIS DOCUMENT SHALL BE RETURNED TO OWNER UPON REQUEST. IT MAY BE SUBJECT TO CERTAIN RESTRICTIONS UNDER APPLICABLE EXPORT CONTROL LAWS AND REGULATIONS.		REMOVE BURRS & BREAK SHARP EDGES: .003/.015 [076/381] X 45° CORNER FILLETS: R.02 [51] MACHINED SURFACES: 125 INCH 3.2 mm SHOWN IN [BRACKETS]		.XX	±0.03	[±0.76]		APPROVED BY
				.XXX	±0.005	[±0.127]		DATE
				.XXXX	±0.0005	[±0.0127]		REFERENCE
				MATERIAL		PROCESS/FINISH		DESCRIPTION <b>OUTLINE</b> 48 FR DC - S56C/145TC - TURBO
				THIRD ANGLE PROJECTION		DRAWING NUMBER		SHEET
				SIZE <b>B</b>		<b>031819</b>		<b>1 OF 1</b>