

PRODUCT INFORMATION PACKET



Model No: CI4D34FT7B

Catalog No: 108458.00

..1.5KW-2HP..3000RPM.80D.IP54.24V...S1.40C.1.0SF.SPECIAL.CI4D34FT7B.....

Metric Motors



Regal and Leeson are trademarks of Regal Beloit Corporation or one of its affiliated companies.

©2018 Regal Beloit Corporation, All Rights Reserved. MC017097E





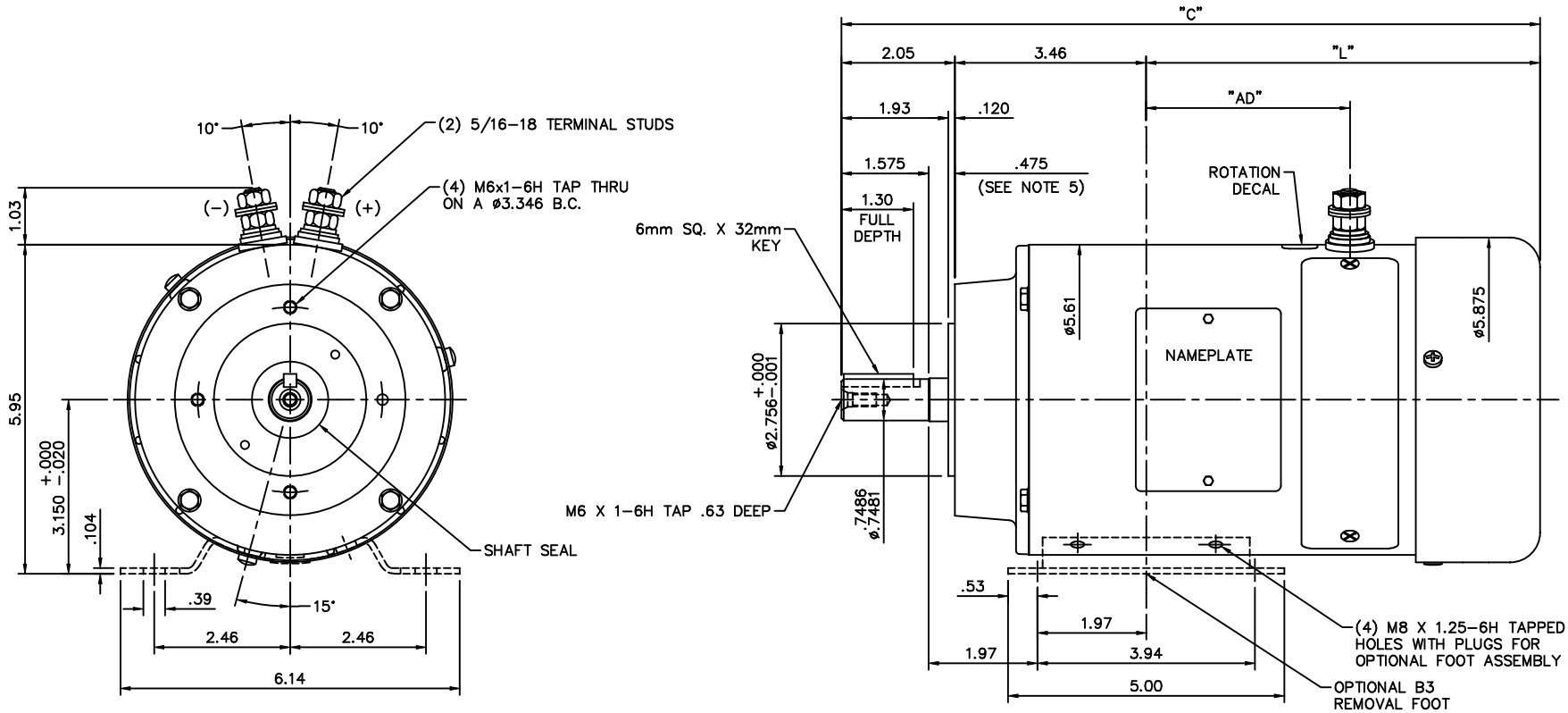
Nameplate Specifications

Output KW	1.5 kW	Voltage	24 V
Current	78.0 A	Speed	3000 rpm
Service Factor	1	Efficiency	82.7 %
Duty	S1	Insulation Class	H
Frame	80D	Enclosure	IP54
Overload Protector	No	Ambient Temperature	40 °C
Drive End Bearing Size	6204	Opp Drive End Bearing Size	6203
UL	Recognized	CSA	Y
CE	N		

Technical Specifications

Rotation	Reversible	Mounting	Special
Overall Length	17.14 in	Frame Length	11.50 in
Shaft Diameter	0.750 in	Shaft Extension	2.05 in
Outline Drawing	031074-ZL80		

This is an uncontrolled document once printed or downloaded and is subject to change without notice. Date Created: 10/15/2018



NOTES:

1. MAXIMUM FACE RUNOUT TO BE .004 T.I.R.
2. MAXIMUM PILOT ECCENTRICITY .004 T.I.R
3. PERMISSIBLE SHAFT RUNOUT .002 T.I.R.
4. GASKETS THROUGHOUT.
5. DIMENSION IS SPACE PROVIDED FOR A BOLT ON B5 OR B14 ADAPTER KIT FOR THE IEC 80 FRAME.

X80	14.14	8.63	5.19	ZL80	17.14	11.63	8.19
W80	13.64	8.13	4.69	YL80	16.64	11.13	7.69
V80	13.14	7.63	4.19	XL80	16.14	10.63	7.19
U80	12.64	7.13	3.69	WL80	15.64	10.13	6.69
R80	12.14	6.63	3.19	Z80	15.14	9.63	6.19
N80	11.64	6.13	2.69	Y80	14.64	9.13	5.69
FRAME	"C"	"L"	"AD"	FRAME	"C"	"L"	"AD"

05	ROTATED FANGUARD FOR PROPER ORIENTATION OF SCREWS PER ECR 73146 EFF. IMMED.	CRK 8/30/01	CJK	TOLERANCES UNLESS OTHERWISE SPECIFIED			LEESON ELECTRIC CORPORATION	
04	REDRAWN PER ECR 73340 EFF. IMMED.	CRK 8/13/01	CJK	DEC.	INCHES	METRIC	DRAWN MMG 5/5/94	TITLE
03	ADDED DIMPLES ON ENDBELL PER ECR 73093	RLW 7/19/01	IPG	.X	±.1	±2.5	APPR.	OUTLINE - D.C. MOTOR TEFC - IEC 80
02	KEYWAY DIM 1.30 WAS 1.26 PER ECR 73093	IPG 7/13/01	SAD	.XX	±.03	±.76	R.F.P.	MAT'L.
01	REVISED NAMEPLATE LOCATION AND FAN GUARD	JSH 7/30/97	SAD	.XXX	±.005	±.127	SCALE	1=2
NO.	REVISION	BY & DATE	CHK'D.	.XXXX	±.0005	±.0127		
THIS DRAWING IN DESIGN AND DETAIL IS OUR PROPERTY AND MUST NOT BE USED EXCEPT IN CONNECTION WITH OUR WORK ALL RIGHTS OF DESIGN AND INVENTION ARE RESERVED THIS IS AN ELECTRONICALLY GENERATED DOCUMENT - DO NOT SCALE THIS PRINT				FRACTIONS	±1/84	REF.	030781	FINISH
				ANGLES	±1/2°	FMF	4D17F18A	REV. 05
								DRAWING NO. 031074